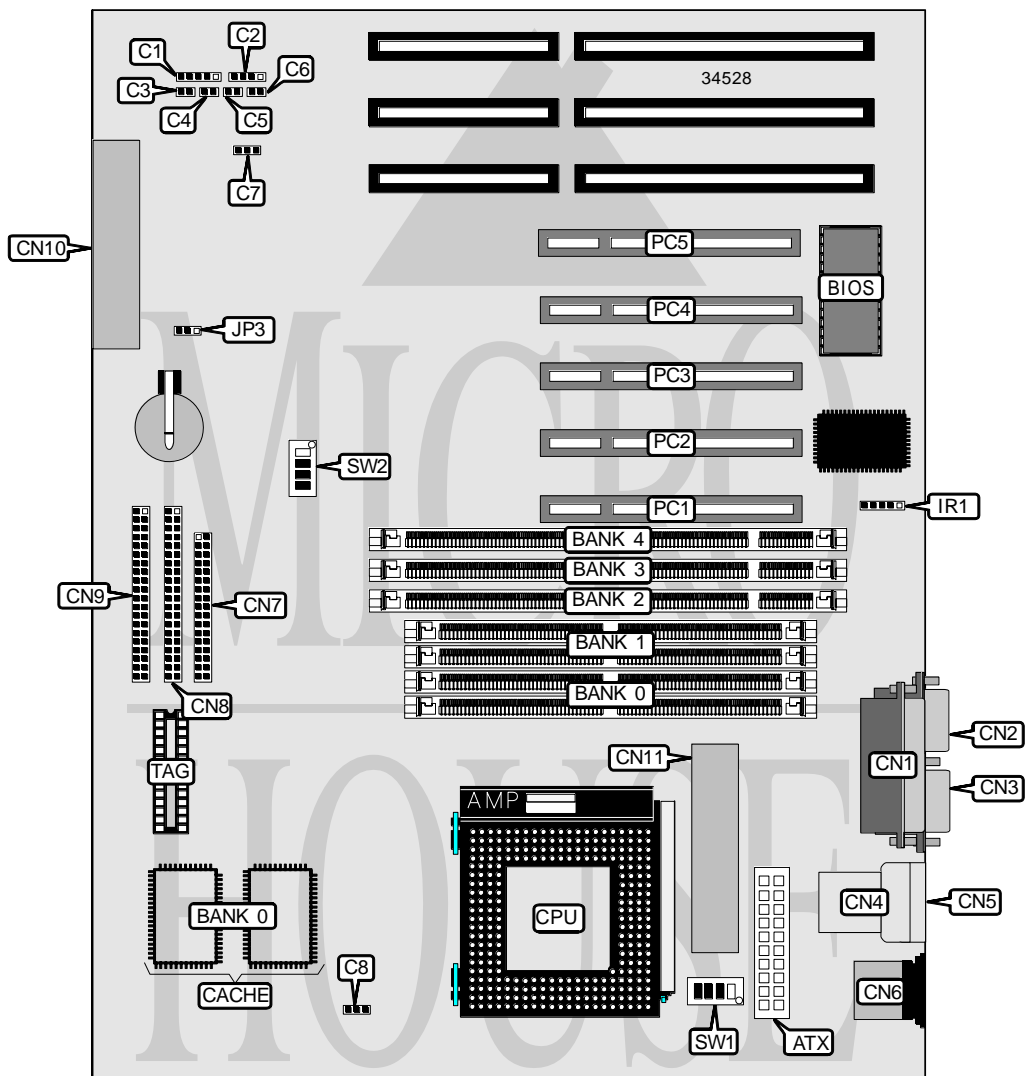


FREE COMPUTER TECHNOLOGY, INC.

P 5 F 7 8

Processor	CX 6X86/CX 6X86L/CX 6X86MX/IBM 6X86/ IBM 6X86L/ IBM 6X86MX AM K5/AM K6/Pentium
Processor Speed	90/100/120/133/150/166/200/233MHz
Chip Set	Intel
Video Chip Set	None
Maximum Onboard Memory	256MB (EDO supported)
Maximum Video Memory	None
Cache	256/512KB
BIOS	Award
Dimensions	305mm x 244mm
I/O Options	32-bit PCI slots (5), floppy drive interface, IDE interfaces (2), parallel port, PS/2 mouse port, serial ports (2), IR connector, USB connectors (2), ATX power connector
NPU Options	None



Continued on next page. . .

... continued from previous page

CONNECTIONS			
Purpose	Location	Purpose	Location
ATX power connector	ATX	Serial port 1	CN3
Power LED & keylock	C1	USB connector 1	CN4
Speaker	C2	USB connector 2	CN5
Soft off power supply	C3	PS/2 mouse port	CN6
Reset switch	C4	Floppy drive interface	CN7
Turbo LED	C5	IDE interface 2	CN8
IDE interface LED	C6	IDE interface 1	CN9
Chassis fan power	C7	System Management Connector	CN10
Chassis fan power	C8	Switching Regulator	CN11
Parallel port	CN1	IR connector	IR1
Serial port 2	CN2	32-bit PCI slots	PC1 – PC5

USER CONFIGURABLE SETTINGS		
Function	Label	Position
í CMOS memory normal operation	JP3	Open
CMOS memory clear	JP3	Pins 2 & 3 closed

DIMM/SIMM CONFIGURATION					
Size	Bank 0	Bank 1	Bank 2	Bank 3	Bank 4
8MB	(2) 1M x 36	None	None	None	None
8MB	None	None	(1) 1M x 64	None	None
16MB	(2) 2M x 36	None	None	None	None
16MB	(2) 1M x 36	(2) 1M x 36	None	None	None
16MB	None	None	(1) 2M x 64	None	None
16MB	None	None	(1) 1M x 64	(1) 1M x 64	None
16MB	None	(2) 1M x 36	(1) 1M x 64	None	None
24MB	(2) 2M x 36	(2) 1M x 36	None	None	None
24MB	None	None	(1) 2M x 64	(1) 1M x 64	None
24MB	None	None	(1) 1M x 64	(1) 1M x 64	(1) 1M x 64
24MB	(2) 1M x 36	(2) 1M x 36	(1) 1M x 64	None	None
24MB	(2) 1M x 36	None	(1) 1M x 64	None	(1) 1M x 64
32MB	(2) 4M x 36	None	None	None	None
32MB	(2) 2M x 36	(2) 2M x 36	None	None	None
32MB	None	None	(1) 4M x 64	None	None
32MB	None	None	(1) 2M x 64	(1) 2M x 64	None
32MB	(2) 1M x 36	(2) 1M x 36	(1) 2M x 64	None	None
40MB	(2) 4M x 36	(2) 1M x 36	None	None	None
40MB	None	None	(1) 4M x 64	(1) 1M x 64	None
40MB	(2) 2M x 36	(2) 2M x 36	(1) 1M x 64	None	None
48MB	(2) 4M x 36	(2) 2M x 36	None	None	None
48MB	None	None	(1) 4M x 64	(1) 2M x 64	None
48MB	None	None	(1) 2M x 64	(1) 2M x 64	(1) 2M x 64
48MB	(2) 2M x 36	(2) 2M x 36	(1) 2M x 64	None	None

Continued on next page...

... continued from previous page

DIMM/SIMM CONFIGURATION (CON'T)					
Size	Bank 0	Bank 1	Bank 2	Bank 3	Bank 4
48MB	(2) 1M x 36	(2) 1M x 36	(1) 4M x 64	None	None
48MB	None	(2) 2M x 36	(1) 2M x 64	(1) 2M x 64	None
48MB	(2) 2M x 36	None	(1) 2M x 64	None	(1) 2M x 64
64MB	(2) 8M x 36	None	None	None	None
64MB	(2) 4M x 36	(2) 4M x 36	None	None	None
64MB	None	None	(1) 8M x 64	None	None
64MB	None	None	(1) 4M x 64	(1) 4M x 64	None
64MB	(2) 2M x 36	(2) 2M x 36	(1) 4M x 64	None	None
72MB	(2) 8M x 36	(2) 1M x 36	None	None	None
72MB	None	None	(1) 8M x 64	(1) 1M x 64	None
72MB	(2) 4M x 36	(2) 4M x 36	(1) 1M x 64	None	None
80MB	(2) 8M x 36	(2) 2M x 36	None	None	None
80MB	None	None	(1) 8M x 64	(1) 2M x 64	None
80MB	(2) 4M x 36	(2) 4M x 36	(1) 2M x 64	None	None
96MB	(2) 8M x 36	(2) 4M x 36	None	None	None
96MB	None	None	(1) 8M x 64	(1) 4M x 64	None
96MB	None	None	(1) 4M x 64	(1) 4M x 64	(1) 4M x 64
96MB	(2) 4M x 36	(2) 4M x 36	(1) 4M x 64	None	None
96MB	None	(2) 4M x 36	(1) 4M x 64	(1) 4M x 64	None
96MB	(2) 4M x 36	None	(1) 4M x 64	None	(1) 4M x 64
128MB	(2) 8M x 36	(2) 8M x 36	None	None	None
128MB	(2) 16M x 36	None	None	None	None
128MB	None	None	(1) 8M x 64	(1) 8M x 64	None
128MB	None	None	(1) 8M x 64	None	(1) 8M x 64
136MB	(2) 16M x 36	(2) 1M x 36	None	None	None
136MB	(2) 8M x 36	(2) 8M x 36	(1) 1M x 64	None	None
136MB	None	(2) 8M x 36	(1) 1M x 64	(1) 8M x 64	None
136MB	(2) 8M x 36	None	(1) 8M x 64	None	(1) 1M x 64
144MB	(2) 16M x 36	(2) 2M x 36	None	None	None
144MB	(2) 8M x 36	(2) 8M x 36	(1) 2M x 64	None	None
152MB	None	(2) 1M x 36	(1) 2M x 64	(1) 16M x 64	None
160MB	(2) 16M x 36	(2) 4M x 36	None	None	None
160MB	(2) 8M x 36	(2) 8M x 36	(1) 4M x 64	None	None
192MB	(2) 16M x 36	(2) 8M x 36	None	None	None
192MB	None	None	(1) 8M x 64	None	(1) 16M x 64
256MB	(2) 16M x 36	(2) 16M x 36	None	None	None
256MB	None	None	(1) 16M x 64	None	(1) 16M x 64
256MB	(2) 16M x 36	None	(1) 16M x 64	None	None

Note: Board accepts EDO memory.

Continued on next page. . .

... continued from previous page

CACHE CONFIGURATION		
Size	Bank 0	TAG
256KB	(2) 32K x 32	Unidentified
512KB	(2) 64K x 32	Unidentified

CPU SPEED SELECTION (CX 6X86/6X86L)						
CPU speed	Clock speed	Multiplier	SW2/1	SW2/2	SW2/3	SW2/4
133MHz	55MHz	2x	On	Off	On	On
150MHz	60MHz	2x	On	Off	On	Off
166MHz	66MHz	2x	On	Off	Off	Off

CPU SPEED SELECTION (IBM 6X86/6X86L)						
CPU speed	Clock speed	Multiplier	SW2/1	SW2/2	SW2/3	SW2/4
133MHz	55MHz	2x	On	Off	On	On
150MHz	60MHz	2x	On	Off	On	Off
166MHz	66MHz	2x	On	Off	Off	Off

CPU SPEED SELECTION (CX 6X86MX)						
CPU speed	Clock speed	Multiplier	SW2/1	SW2/2	SW2/3	SW2/4
166MHz	60MHz	2.5x	On	On	On	Off
200MHz	66MHz	2.5x	On	On	Off	Off
233MHz	66MHz	3x	Off	On	Off	Off

CPU SPEED SELECTION (IBM 6X86MX)						
CPU speed	Clock speed	Multiplier	SW2/1	SW2/2	SW2/3	SW2/4
166MHz	60MHz	2.5x	On	On	On	Off
200MHz	66MHz	2.5x	On	On	Off	Off
233MHz	66MHz	3x	Off	On	Off	Off

CPU SPEED SELECTION (AM K5)						
CPU speed	Clock speed	Multiplier	SW2/1	SW2/2	SW2/3	SW2/4
90MHz	60MHz	1.5x	Off	Off	On	Off
100MHz	66MHz	1.5x	Off	Off	Off	Off
120MHz	60MHz	1.5x	Off	Off	On	Off
133MHz	66MHz	1.5x	On	Off	Off	Off
150MHz	60MHz	1.75x	On	On	On	Off
166MHz	66MHz	1.75x	On	On	Off	Off

Continued on next page. . .

... continued from previous page

CPU SPEED SELECTION (AM K6)						
CPU speed	Clock speed	Multiplier	SW2/1	SW2/2	SW2/3	SW2/4
166MHz	66MHz	2.5x	On	On	Off	Off
200MHz	66MHz	3x	Off	On	Off	Off
233MHz	66MHz	3.5x	Off	Off	Off	Off

CPU SPEED SELECTION (INTEL)						
CPU speed	Clock speed	Multiplier	SW2/1	SW2/2	SW2/3	SW2/4
90MHz	60MHz	1.5x	Off	Off	On	Off
100MHz	66MHz	1.5x	Off	Off	Off	Off
120MHz	60MHz	2x	On	Off	On	Off
133MHz	66MHz	2x	On	Off	Off	Off
150MHz	60MHz	2.5x	On	On	On	Off
166MHz	66MHz	2.5x	On	On	Off	Off
200MHz	66MHz	3x	Off	On	Off	Off
233MHz	66MHz	3.5x	Off	Off	Off	Off

CPU VOLTAGE SELECTION				
Voltage	SW1/1	SW1/2	SW1/3	SW1/4
2.5v	On	Off	Off	Off
2.8v	Off	On	Off	Off
2.9v	Off	Off	On	Off
3.2v	Off	Off	Off	On
3.3v	Any setting	Any setting	Any setting	Any setting
3.5v	Any setting	Any setting	Any setting	Any setting