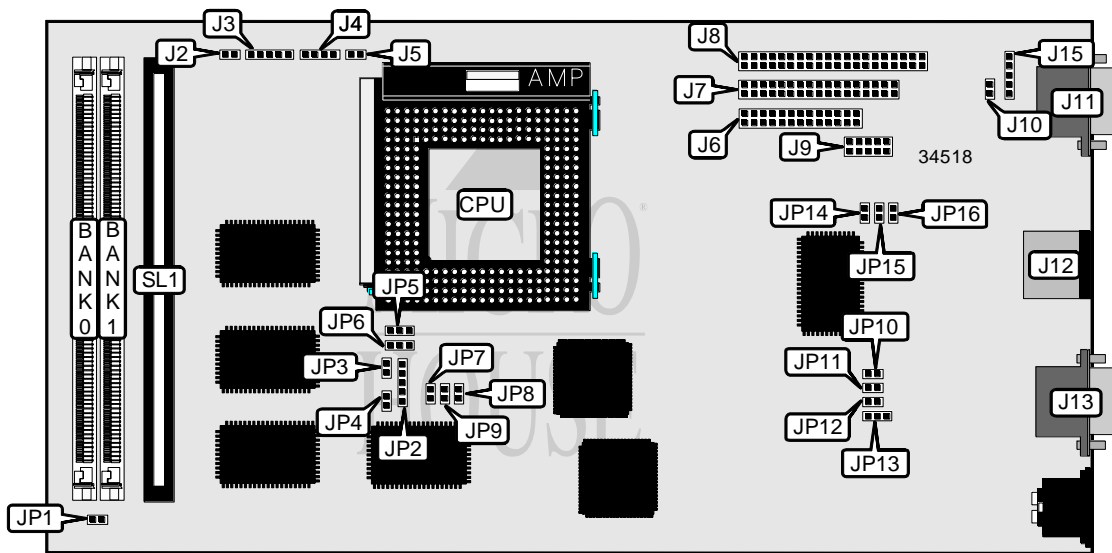


TECHNOLAND, INC.

PEAK 500I, 500P

Processor	Pentium
Processor Speed	75/90/100/120/133/150/166MHz
Chip Set	SIS
Video Chip Set	SIS
Maximum Onboard Memory	128MB (EDO supported)
Maximum Video Memory	None
Cache	256/512KB
BIOS	Award
Dimensions	185mm x 122mm
I/O Options	Floppy drive interface, IDE interface, parallel port, PS/2 mouse port, serial ports (2), cache slot
NPU Options	None



CONNECTIONS			
Purpose	Location	Purpose	Location
Turbo LED	J2	Serial port 2	J9
Power LED & keylock	J3	IDE interface LED	J10
Speaker	J4	VGA port	J11
Reset switch	J5	PS/2 mouse port	J12
Parallel port	J6	Serial port 1	J13
Floppy drive interface	J7	Auxiliary keyboard connector	J15
IDE interface	J8	Cache slot	SL1

Continued on next page . . .

TECHNOLAND, INC.
PEAK 5001, 500P

... continued from previous page

USER CONFIGURABLE SETTINGS		
Function	Label	Position
í BIOS type select EPROM	JP2	Pins 2 & 3 closed
BIOS type select flash BIOS	JP2	Pins 1 & 2, 4 & 5 closed
í Cache type select write back	JP6	Pins 1 & 2 closed
Cache type select write through	JP6	Pins 2 & 3 closed
í Watchdog timer port select Port F2	JP10	Closed
Watchdog timer port select Port F6	JP10	Open
í Monitor type select color	JP11	Closed
Monitor type select monochrome	JP11	Open
í CMOS memory normal operation	JP12	Open
CMOS memory clear	JP12	Closed
í IDE interface enabled	JP13	Closed
IDE interface disabled	JP13	Open
í On board I/O enabled	JP16	Open
On board I/O disabled	JP16	Closed

SIMM CONFIGURATION		
Size	Bank 0	Bank 1
4MB	None	(1) 1M x 36
8MB	(1) 1M x 36	(1) 1M x 36
8MB	None	(1) 2M x 36
16MB	(1) 2M x 36	(1) 2M x 36
16MB	None	(1) 4M x 36
32MB	(1) 4M x 36	(1) 4M x 36
32MB	None	(1) 8M x 36
64MB	(1) 8M x 36	(1) 8M x 36
128MB	(1) 16M x 36	(1) 16M x 36

Note: Board accepts EDO memory. Board also accepts x 32 SIMMs.

SIMM JUMPER CONFIGURATION	
Type	JP1
í FP	Closed
EDO	Open

CACHE CONFIGURATION	
Size	SL1
256KB	256KB module installed
512KB	512KB module installed

Continued on next page. . .

TECHNOLAND, INC.
 PEAK 500I, 500P

... continued from previous page

CPU SPEED SELECTION							
CPU speed	Clock speed	Multiplier	JP7	JP8	JP9	JP14	JP15
75MHz	50MHz	1.5x	Open	Closed	Open	Open	Open
90MHz	60MHz	1.5x	Closed	Closed	Open	Open	Open
100MHz	66MHz	1.5x	Closed	Closed	Closed	Open	Open
120MHz	60MHz	2x	Closed	Closed	Open	Open	Closed
133MHz	66MHz	2x	Closed	Closed	Closed	Open	Closed
150MHz	60MHz	2.5x	Closed	Closed	Open	Closed	Closed
166MHz	66MHz	2.5x	Closed	Closed	Closed	Closed	Closed

ON BOARD VIDEO SELECTION			
Setting	JP3	JP4	JP5
í Enabled	Closed	Closed	Pins 1 & 2 closed
Disabled	Open	Open	Pins 2 & 3 closed