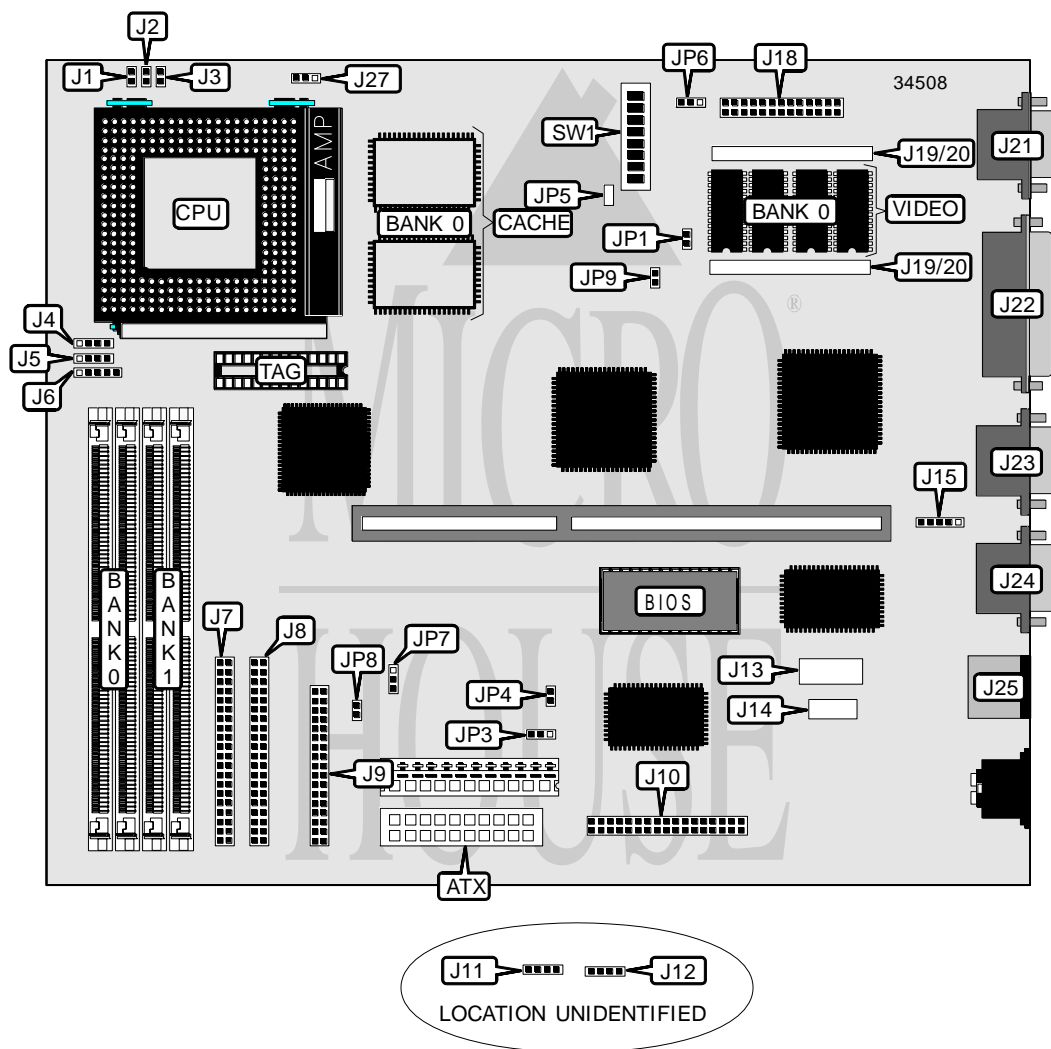


GEMLIGHT COMPUTER, LTD.

GMB-P571PA (VER. 1.10)

Processor	CX 6X86L/CX 6X86MX/AM K5/AM K6/Pentium
Processor Speed	90/100/120/133/150/166/200/233/266MHz
Chip Set	Intel
Video Chip Set	S3
Maximum Onboard Memory	256MB (EDO supported)
Maximum Video Memory	4MB
Cache	512KB
BIOS	Award
Dimensions	248mm x 200mm
I/O Options	Floppy drive interface, green PC connector, IDE interfaces (2), parallel port, PS/2 mouse port, serial ports (2), VGA feature connector, VGA port, IR connector, VRM connector, USB connector, ATX power connector, wavetable interface, CD-ROM audio (2)
NPU Options	None



Continued on next page . . .

GEMLIGHT COMPUTER, LTD.
GMB-P571PA (VER. 1.10)

... continued from previous page

CONNECTIONS			
Purpose	Location	Purpose	Location
ATX power connector	ATX	CD-ROM audio in (Mitsumi/Panasonic)	J12
Reset switch	J1	Audio extension connector	J13
Green PC connector	J2	Audio extension connector	J14
Green PC LED	J3	IR connector	J15
Speaker	J4	VGA feature connector	J18
IDE interface LED	J5	VGA port	J21
Power LED & keylock	J6	Parallel port	J22
IDE interface 1	J7	Serial port 1	J23
IDE interface 2	J8	Serial port 2	J24
Floppy drive interface	J9	PS/2 mouse port	J25
Wavetable interface	J10	Chassis fan power	J27
CD-ROM audio in (Sony)	J11		

USER CONFIGURABLE SETTINGS		
Function	Label	Position
On board audio enabled	JP1	Closed
On board audio disabled	JP1	Open
Flash BIOS voltage select 12v	JP3	Pins 1 & 2 closed
Flash BIOS voltage select 5v	JP3	Pins 2 & 3 closed
On board video enabled	JP4	Closed
On board video disabled	JP4	Open
í Factory configured - do not alter	JP5	Open
í Factory configured - do not alter	JP6	Pins 2 & 3 closed
í CMOS memory normal operation	JP7	Pins 1 & 2 closed
CMOS memory clear	JP7	Pins 2 & 3 closed
í Factory configured - do not alter	SW1/1	Off
í Factory configured - do not alter	SW1/2	Off

SIMM CONFIGURATION		
Size	Bank 0	Bank 1
8MB	(2) 1M x 32	None
16MB	(2) 2M x 32	None
16MB	(2) 1M x 32	(2) 1M x 32
24MB	(2) 2M x 32	(2) 1M x 32
32MB	(2) 4M x 32	None
32MB	(2) 2M x 32	(2) 2M x 32
40MB	(2) 4M x 32	(2) 1M x 32
48MB	(2) 4M x 32	(2) 2M x 32
64MB	(2) 8M x 32	None
64MB	(2) 4M x 32	(2) 4M x 32
72MB	(2) 8M x 32	(2) 1M x 32
80MB	(2) 8M x 32	(2) 2M x 32

Continued on next page...

GEMLIGHT COMPUTER, LTD.
GMB-P571PA (VER. 1.10)

... continued from previous page

SIMM CONFIGURATION (CON'T)		
Size	Bank 0	Bank 1
96MB	(2) 8M x 32	(2) 4M x 32
128MB	(2) 8M x 32	(2) 8M x 32
128MB	(2) 16M x 32	None
136MB	(2) 16M x 32	(2) 1M x 32
144MB	(2) 16M x 32	(2) 2M x 32
160MB	(2) 16M x 32	(2) 4M x 32
192MB	(2) 16M x 32	(2) 8M x 32
256MB	(2) 16M x 32	(2) 16M x 32

Note: Board accepts EDO memory..

CACHE CONFIGURATION		
Size	Bank 0	TAG
512KB	(2) 64K x 32	Unidentified

VIDEO MEMORY CONFIGURATION		
Size	Bank 0	J19/20
2MB	2MB	Not installed
4MB	2MB	2MB memory module installed

CPU SPEED SELECTION (CX 6X86L)								
CPU speed	Clock speed	Multiplier	SW1/3	SW1/4	SW1/5	SW1/6	SW1/7	SW1/8
150MHz	60MHz	2x	On	Off	Off	On	Off	Off
166MHz	66MHz	2x	On	Off	Off	Off	On	Off
200MHz	75MHz	2x	On	Off	Off	Off	Off	On

CPU SPEED SELECTION (CX 6X86MX)								
CPU speed	Clock speed	Multiplier	SW1/3	SW1/4	SW1/5	SW1/6	SW1/7	SW1/8
166MHz	60MHz	2.5x	On	Off	Off	On	Off	Off
200MHz	75MHz	2x	On	Off	Off	Off	Off	On

CPU SPEED SELECTION (AM K5)								
CPU speed	Clock speed	Multiplier	SW1/3	SW1/4	SW1/5	SW1/6	SW1/7	SW1/8
120MHz	60MHz	2x	On	Off	Off	On	Off	Off
133MHz	66MHz	2x	On	Off	Off	Off	On	Off
166MHz	66MHz	2.5x	On	On	Off	Off	On	Off

CPU SPEED SELECTION (AM K6)								
CPU speed	Clock speed	Multiplier	SW1/3	SW1/4	SW1/5	SW1/6	SW1/7	SW1/8
166MHz	66MHz	2.5x	On	On	Off	Off	On	Off
200MHz	66MHz	3x	Off	On	Off	Off	On	Off
233MHz	66MHz	3.5x	Off	Off	Off	Off	On	Off
266MHz	66MHz	4x	On	On	On	Off	On	Off

Continued on next page...

GEMLIGHT COMPUTER, LTD.
 GMB-P571PA (VER. 1.10)

... continued from previous page

CPU SPEED SELECTION (INTEL)								
CPU speed	Clock speed	Multiplier	SW1/3	SW1/4	SW1/5	SW1/6	SW1/7	SW1/8
90MHz	60MHz	1.5x	Off	Off	Off	On	Off	Off
100MHz	66MHz	1.5x	Off	Off	Off	Off	On	Off
120MHz	60MHz	2x	On	Off	Off	On	Off	Off
133MHz	66MHz	2x	On	Off	Off	Off	On	Off
166MHz	66MHz	2.5x	On	On	Off	Off	On	Off
200MHz	66MHz	3x	Off	On	Off	Off	On	Off
233MHz	66MHz	3.5x	Off	Off	Off	Off	On	Off

POWER SUPPLY SELECTION		
Setting	JP8	JP9
AT	Closed	Open
ATX	Open	Closed