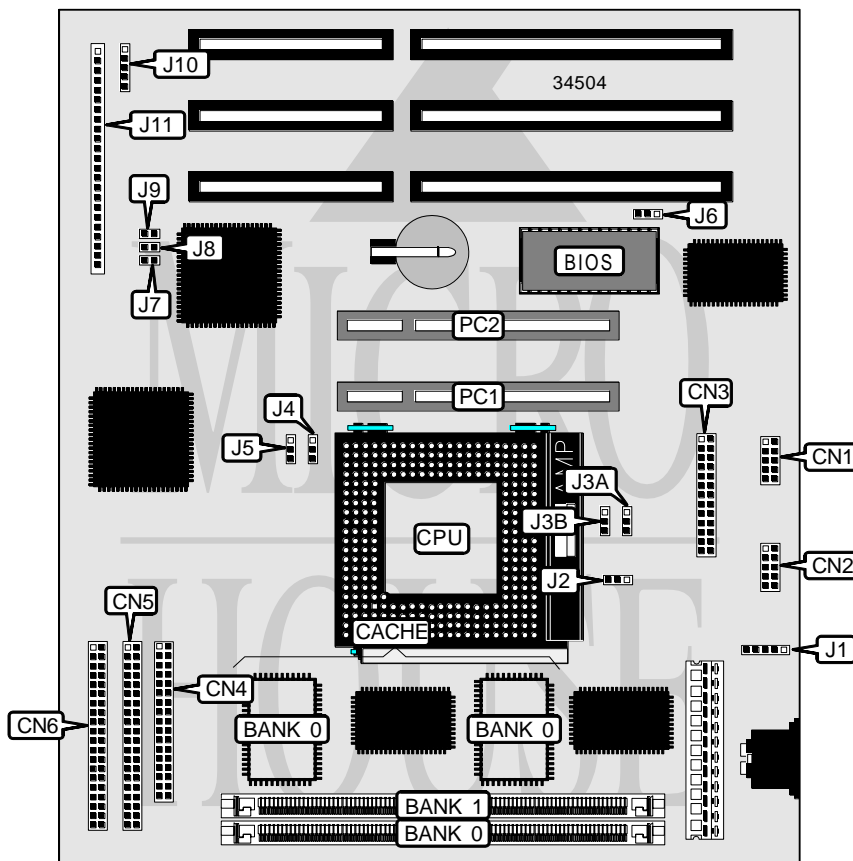


EPOX COMPUTER CO., LTD.

P 5 5 - K V

Processor	CX 6X86/CX 6X86L/IBM 6X86/IBM 6X86L/AM K5/AM K6/Pentium
Processor Speed	75/90/100/120/133/150/166/180/200MHz
Chip Set	VIA
Video Chip Set	None
Maximum Onboard Memory	128MB (EDO supported)
Maximum Video Memory	None
Cache	256/512KB
BIOS	Award
Dimensions	220mm x 220mm
I/O Options	32-bit PCI slots (2), floppy drive interface, green PC connector, IDE interfaces (2), parallel port, PS/2 mouse interface, serial ports (2), IR connector
NPU Options	None



Continued on next page. . .

... continued from previous page

CONNECTIONS			
Purpose	Location	Purpose	Location
Serial port 1	CN1	Power LED & keylock	J11/pins 1 – 5
Serial port 2	CN2	Speaker	J11/pins 7 - 10
Parallel port	CN3	Reset switch	J11/pins 12 & 13
Floppy drive interface	CN4	Green PC connector	J11/pins 15 & 16
IDE interface 2	CN5	Green PC LED	J11/pins 18 & 19
IDE interface 1	CN6	Turbo LED	J11/pins 20 & 21
PS/2 mouse interface	J1	IDE interface LED	J11/pins 23 & 24
IR connector	J10	32-bit PCI slots	PC1 – PC2

USER CONFIGURABLE SETTINGS		
Function	Label	Position
Flash BIOS voltage select 5v	J6	Pins 1 & 2 closed
Flash BIOS voltage select 12v	J6	Pins 2 & 3 closed

SIMM CONFIGURATION		
Size	Bank 0	Bank 1
4MB	(1) 1M x 36	None
8MB	(1) 1M x 36	(1) 1M x 36
8MB	(1) 2M x 36	None
16MB	(1) 2M x 36	(1) 2M x 36
16MB	(1) 4M x 36	None
32MB	(1) 4M x 36	(1) 4M x 36
32MB	(1) 8M x 36	None
64MB	(1) 8M x 36	(1) 8M x 36
64MB	(1) 16M x 36	None
128MB	(1) 16M x 36	(1) 16M x 36

CACHE CONFIGURATION		
Size	Bank 0	TAG
256KB	(2) 32K x 32	Unidentified
512KB	(2) 64K x 32	Unidentified

Note: The location of the TAG is unidentified.

CPU SPEED SELECTION (CYRIX)							
CPU speed	Clock speed	Multiplier	J4	J5	J7	J8	J9
120MHz	50MHz	2x	2 & 3	1 & 2	Closed	Closed	Open
133MHz	55MHz	2x	2 & 3	1 & 2	Open	Open	Open
150MHz	60MHz	2x	2 & 3	1 & 2	Closed	Open	Open
166MHz	66MHz	2x	2 & 3	1 & 2	Open	Closed	Open
200MHz	75MHz	2x	2 & 3	1 & 2	Open	Open	Closed

Note: Pins designated should be in the closed position.

Continued on next page. . .

EPOX COMPUTER CO., LTD.
P 5 5 - K V

... continued from previous page

CPU SPEED SELECTION (IBM)							
CPU speed	Clock speed	Multiplier	J4	J5	J7	J8	J9
120MHz	50MHz	2x	2 & 3	1 & 2	Closed	Closed	Open
133MHz	55MHz	2x	2 & 3	1 & 2	Open	Open	Open
150MHz	60MHz	2x	2 & 3	1 & 2	Closed	Open	Open
166MHz	66MHz	2x	2 & 3	1 & 2	Open	Closed	Open
200MHz	75MHz	2x	2 & 3	1 & 2	Open	Open	Closed

Note: Pins designated should be in the closed position.

CPU SPEED SELECTION (AM K5/K6)							
CPU speed	Clock speed	Multiplier	J4	J5	J7	J8	J9
75MHz	50MHz	1.5x	1 & 2	1 & 2	Closed	Closed	Open
90MHz	60MHz	1.5x	1 & 2	1 & 2	Closed	Open	Open
100MHz	66MHz	1.5x	1 & 2	1 & 2	Open	Closed	Open
120MHz	60MHz	2x	2 & 3	1 & 2	Closed	Open	Open
133MHz	66MHz	2x	2 & 3	1 & 2	Open	Closed	Open
150MHz	60MHz	2.5x	2 & 3	2 & 3	Closed	Open	Open
166MHz	66MHz	2.5x	2 & 3	2 & 3	Open	Closed	Open
180MHz	60MHz	3x	1 & 2	2 & 3	Closed	Open	Open
200MHz	66MHz	3x	1 & 2	2 & 3	Open	Closed	Open

Note: Pins designated should be in the closed position.

CPU SPEED SELECTION (INTEL)							
CPU speed	Clock speed	Multiplier	J4	J5	J7	J8	J9
75MHz	50MHz	1.5x	1 & 2	1 & 2	Closed	Closed	Open
90MHz	60MHz	1.5x	1 & 2	1 & 2	Closed	Open	Open
100MHz	66MHz	1.5x	1 & 2	1 & 2	Open	Closed	Open
120MHz	60MHz	2x	2 & 3	1 & 2	Closed	Open	Open
133MHz	66MHz	2x	2 & 3	1 & 2	Open	Closed	Open
150MHz	60MHz	2.5x	2 & 3	2 & 3	Closed	Open	Open
166MHz	66MHz	2.5x	2 & 3	2 & 3	Open	Closed	Open
180MHz	60MHz	3x	1 & 2	2 & 3	Closed	Open	Open
200MHz	66MHz	3x	1 & 2	2 & 3	Open	Closed	Open

Note: Pins designated should be in the closed position.

Continued on next page. . .

EPOX COMPUTER CO., LTD.

P 5 5 - K V

... continued from previous page

CPU TYPE SELECTION		
Type	J3A	J3B
AM K5	Pins 1 & 2 closed	Pins 1 & 2 closed
AM K6	Pins 2 & 3 closed	Pins 2 & 3 closed
CX 6X86	Pins 1 & 2 closed	Pins 1 & 2 closed
CX 6X86L	Pins 2 & 3 closed	Pins 2 & 3 closed
CX M2	Pins 2 & 3 closed	Pins 2 & 3 closed
IBM 6X86	Pins 1 & 2 closed	Pins 1 & 2 closed
IBM 6X86L	Pins 2 & 3 closed	Pins 2 & 3 closed
P54C	Pins 1 & 2 closed	Pins 1 & 2 closed
P55C	Pins 2 & 3 closed	Pins 2 & 3 closed

CPU VOLTAGE SELECTION	
Voltage	J2
í 2.8v	Pins 2 & 3 closed
2.9v	Pins 1 & 2 closed
3.2v	Open