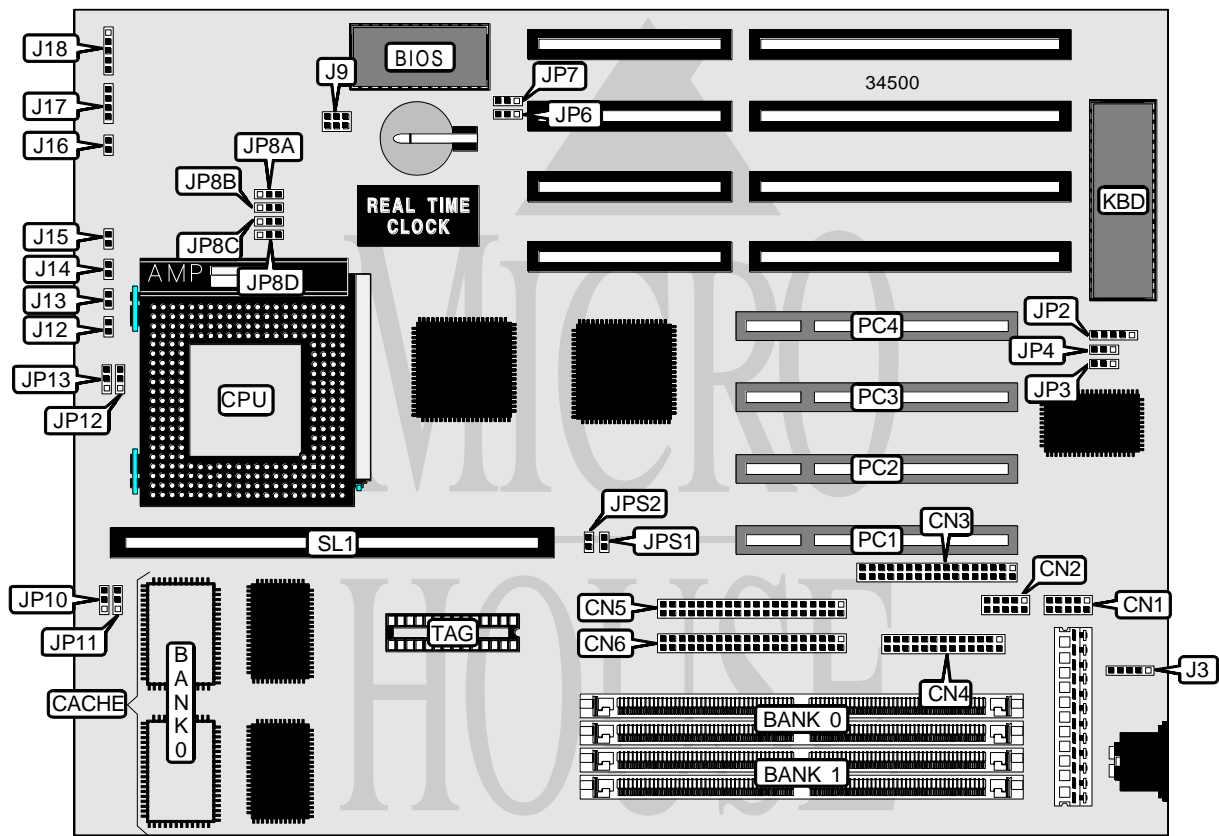


EPOX COMPUTER CO., LTD.

P 5 5 - T F

Processor	CX M1/AM K5/Pentium
Processor Speed	75/90/100/120/133/150/166/180/200MHz
Chip Set	Intel
Video Chip Set	None
Maximum Onboard Memory	128MB (EDO supported)
Maximum Video Memory	None
Cache	256/512KB
BIOS	Award
Dimensions	254mm x 218mm
I/O Options	32-bit PCI slots (4), floppy drive interface, green PC connector, IDE interfaces (2), parallel port, PS/2 mouse interface, serial ports (2), cache slot, IR connector
NPU Options	None



Continued on next page . . .

... continued from previous page

CONNECTIONS			
Purpose	Location	Purpose	Location
Serial port 1	CN1	IDE interface LED	J13
Serial port 2	CN2	Green PC LED	J14
Floppy drive interface	CN3	Turbo LED	J15
Parallel port	CN4	Reset switch	J16
IDE interface 2	CN5	Speaker	J17
IDE interface 1	CN6	Power LED & keylock	J18
PS/2 mouse interface	J3	IR connector	JP2
Chassis fan power	J9	32-bit PCI slots	PC1 – PC4
Green PC connector	J12	Cache slot	SL1

USER CONFIGURABLE SETTINGS		
Function	Label	Position
Keyboard clock select depends on ISA clock	JP4	Pins 1 & 2 closed
Keyboard clock select 12MHz	JP4	Pins 2 & 3 closed
Flash BIOS normal operation	JP6	Pins 1 & 2 closed
Flash BIOS programming mode	JP6	Pins 2 & 3 closed
Flash BIOS voltage select 12v	JP7	Pins 2 & 3 closed
Flash BIOS voltage select 5v	JP7	Pins 1 & 2 closed

SIMM CONFIGURATION		
Size	Bank 0	Bank 1
8MB	(2) 1M x 36	None
16MB	(2) 2M x 36	None
16MB	(2) 1M x 36	(2) 1M x 36
24MB	(2) 2M x 36	(2) 1M x 36
32MB	(2) 4M x 36	None
32MB	(2) 2M x 36	(2) 2M x 36
40MB	(2) 4M x 36	(2) 1M x 36
48MB	(2) 4M x 36	(2) 2M x 36
64MB	(2) 8M x 36	None
64MB	(2) 4M x 36	(2) 4M x 36
72MB	(2) 8M x 36	(2) 1M x 36
80MB	(2) 8M x 36	(2) 2M x 36
96MB	(2) 8M x 36	(2) 4M x 36
128MB	(2) 8M x 36	(2) 8M x 36

Note: Board accepts EDO memory. Board also accepts x 32 SIMMs.

Continued on next page. . .

... continued from previous page

CACHE CONFIGURATION			
Size	Bank 0	SL1	TAG
256KB (A)	(2) 32K x 32	Not installed	Unidentified
256KB (A)	None	256KB module installed	Unidentified
512KB (A)	(2) 32K x 32	256KB module installed	Unidentified
512KB (B)	(2) 64K x 32	Not installed	Unidentified
512KB (C)	None	512KB module installed	Unidentified

CACHE JUMPER CONFIGURATION		
Size	JP10	JP11
256KB (A)	Pins 1 & 2 closed	Pins 1 & 2 closed
256KB (A)	Pins 1 & 2 closed	Pins 2 & 3 closed
512KB (A)	Pins 1 & 2 closed	Pins 1 & 2 closed
512KB (B)	Pins 2 & 3 closed	Pins 1 & 2 closed
512KB (C)	Pins 1 & 2 closed	Pins 2 & 3 closed

CPU SPEED SELECTION (CYRIX)							
CPU speed	Clock speed	Multiplier	JP3	JP12	JP13	JPS1	JPS2
120MHz	50MHz	2x	1 & 2	2 & 3	1 & 2	Closed	Closed
133MHz	55MHz	2x	1 & 2	2 & 3	1 & 2	Open	Open
150MHz	60MHz	2x	2 & 3	2 & 3	1 & 2	Closed	Open
166MHz	66MHz	2x	2 & 3	2 & 3	1 & 2	Open	Closed

Note: Pins designated should be in the closed position. J8 must be set for correct CPU type.

CPU SPEED SELECTION (AMD)
Note: The jumper settings for the AMD processor is unidentified.

CPU SPEED SELECTION (INTEL)							
CPU speed	Clock speed	Multiplier	JP3	JP12	JP13	JPS1	JPS2
75MHz	50MHz	1.5x	1 & 2	2 & 3	2 & 3	Closed	Closed
90MHz	60MHz	1.5x	2 & 3	2 & 3	2 & 3	Closed	Open
100MHz	66MHz	1.5x	2 & 3	2 & 3	2 & 3	Open	Closed
120MHz	60MHz	2x	2 & 3	2 & 3	1 & 2	Closed	Open
133MHz	66MHz	2x	2 & 3	2 & 3	1 & 2	Open	Closed
150MHz	60MHz	2.5x	2 & 3	1 & 2	1 & 2	Closed	Open
166MHz	66MHz	2.5x	2 & 3	1 & 2	1 & 2	Open	Closed
180MHz	60MHz	3x	2 & 3	1 & 2	2 & 3	Closed	Open
200MHz	66MHz	3x	2 & 3	1 & 2	2 & 3	Open	Closed

Note: Pins designated should be in the closed position. J8 must be set for correct CPU type.

Continued on next page...

EPOX COMPUTER CO., LTD.
P 5 5 - T F

... continued from previous page

CPU TYPE SELECTION				
Type	JP8A	JP8B	JP8C	JP8D
Cyrix	Pins 1 & 2 closed	Pins 1 & 2 closed	Pins 1 & 2 closed	Pins 1 & 2 closed
AMD	Pins 1 & 2 closed	Pins 1 & 2 closed	Pins 1 & 2 closed	Pins 1 & 2 closed
P54C	Pins 1 & 2 closed	Pins 1 & 2 closed	Pins 1 & 2 closed	Pins 1 & 2 closed
P55C	Pins 2 & 3 closed	Pins 2 & 3 closed	Pins 2 & 3 closed	Pins 2 & 3 closed