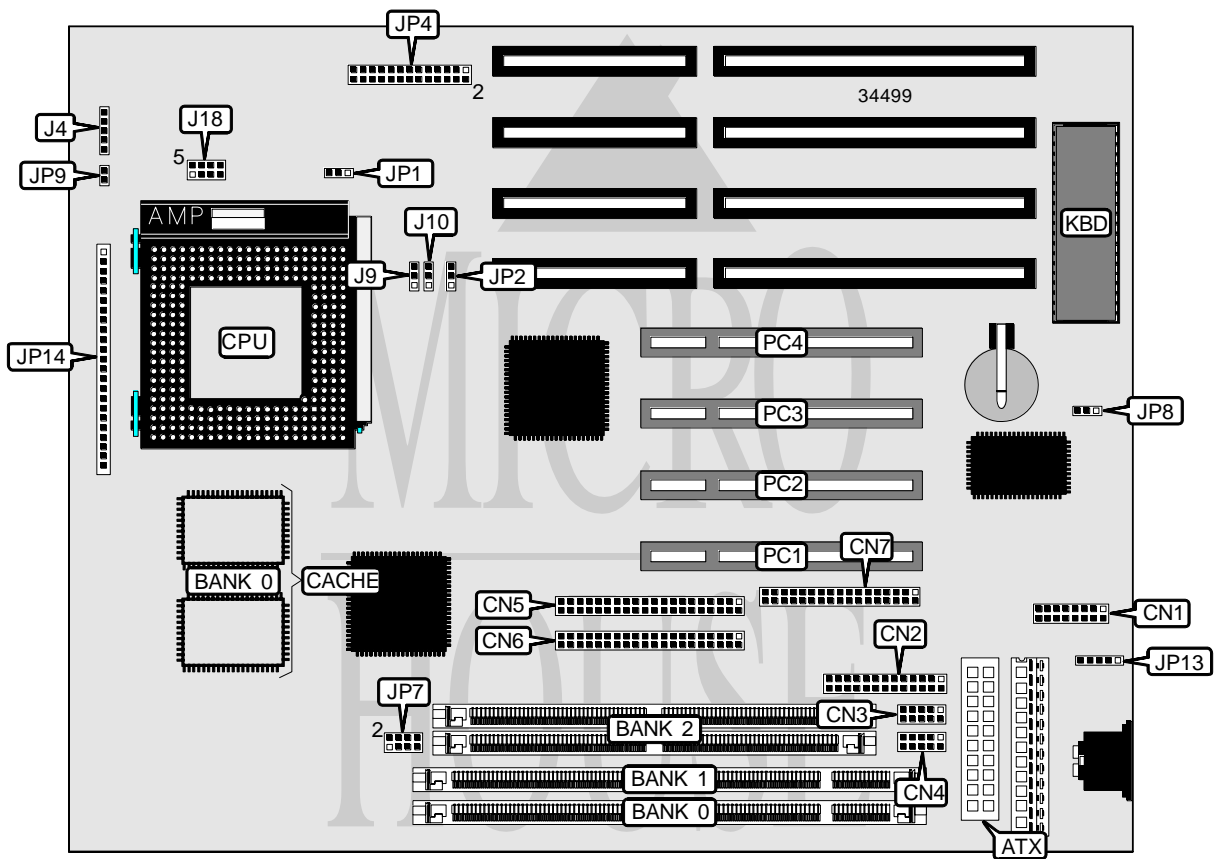


# EPOX COMPUTER CO., LTD.

## P 5 5 - B T

<b>Processor</b>	CX 6X86/CX 6X86L/IBM 6X86/IBM 6X86L//CX 6X86MX/AM K5/ AM K6/Pentium
<b>Processor Speed</b>	90/100/120/133/150/166/180/200/225/233/266MHz
<b>Chip Set</b>	Intel
<b>Video Chip Set</b>	None
<b>Maximum Onboard Memory</b>	256MB (EDO supported)
<b>Maximum Video Memory</b>	None
<b>Cache</b>	512KB
<b>BIOS</b>	Award
<b>Dimensions</b>	254mm x 218mm
<b>I/O Options</b>	32-bit PCI slots (4), floppy drive interface, green PC connector, IDE interfaces (2), parallel port, PS/2 mouse interface, serial ports (2), IR connector, VRM connector, USB connector, ATX power connector
<b>NPU Options</b>	None



Continued on next page. . .

... continued from previous page

CONNECTIONS			
Purpose	Location	Purpose	Location
ATX power connector	ATX	Soft off power supply	JP9
USB connector	CN1	PS/2 mouse interface	JP13
Parallel port	CN2	Power LED & keylock	JP14/pins 1 – 5
Serial port 2	CN3	Speaker	JP14/pins 7 - 10
Serial port 1	CN4	Reset switch	JP14/pins 12 & 13
IDE interface 2	CN5	Green PC connector	JP14/pins 15 & 16
IDE interface 1	CN6	Green PC LED	JP14/pins 18 & 19
Floppy drive interface	CN7	Turbo LED	JP14/pins 20 & 21
IR connector	J4	IDE interface LED	JP14/pins 23 & 24
Chassis fan power	JP1	32-bit PCI slots	PC1 – PC4

USER CONFIGURABLE SETTINGS		
Function	Label	Position
Keyboard power on enabled	JP2	Pins 1 & 2 closed
Keyboard power on disabled	JP2	Pins 2 & 3 closed
CMOS memory normal operation	JP8	Pins 1 & 2 closed
CMOS memory clear	JP8	Pins 2 & 3 closed

DIMM/SIMM CONFIGURATION			
Size	Bank 0	Bank 1	Bank 2
8MB	None	None	(2) 1M x 36
8MB	None	(1) 1M x 64	None
16MB	None	None	(2) 2M x 36
16MB	None	(1) 2M x 64	None
16MB	(1) 1M x 64	None	(2) 1M x 36
16MB	(1) 1M x 64	(1) 1M x 64	None
32MB	None	None	(2) 4M x 36
32MB	None	(1) 4M x 64	None
32MB	(1) 2M x 64	None	(2) 2M x 36
32MB	(1) 2M x 64	(1) 2M x 64	None
40MB	(1) 1M x 64	None	(2) 4M x 36
48MB	(1) 4M x 64	None	(2) 2M x 36
48MB	(1) 2M x 64	None	(2) 4M x 36
64MB	None	None	(2) 8M x 36
64MB	(1) 8M x 64	None	None
64MB	(1) 4M x 64	None	(2) 4M x 36
64MB	(1) 4M x 64	(1) 4M x 64	None
72MB	(1) 1M x 64	None	(2) 8M x 36
80MB	(1) 8M x 64	None	(2) 2M x 36
80MB	(1) 2M x 64	None	(2) 8M x 36
96MB	(1) 8M x 64	None	(2) 4M x 36
96MB	(1) 4M x 64	None	(2) 8M x 36

Continued on next page...

... continued from previous page

DIMM/SIMM CONFIGURATION (CON'T)			
Size	Bank 0	Bank 1	Bank 2
128MB	(1) 8M x 64	None	(2) 8M x 36
128MB	(1) 8M x 64	(1) 8M x 64	None
128MB	None	None	(2) 16M x 36
144MB	(1) 1M x 64	(1) 1M x 64	(2) 16M x 36
160MB	(1) 2M x 64	(1) 2M x 64	(2) 16M x 36
192MB	(1) 4M x 64	(1) 4M x 64	(2) 16M x 36
256MB	(1) 8M x 64	(1) 8M x 64	(2) 16M x 36

Note: Board accepts EDO memory.

DIMM VOLTAGE CONFIGURATION	
Voltage	JP7
3.3v	Pins 1 & 2, 3 & 4 closed
5v	Pins 5 & 6, 7 & 8 closed

CACHE CONFIGURATION		
Size	Bank 0	TAG
512KB	(2) 64K x 32	Unidentified

Note: The location of the TAG is unidentified.

CPU SPEED SELECTION (CX 6X86)			
CPU speed	Clock speed	Multiplier	JP4
133MHz	66MHz	2x	Pins 23 & 24 closed
150MHz	60MHz	2x	Pins 5 & 6 closed
166MHz	66MHz	2x	Pins 7 & 8 closed
200MHz	66MHz	2x	Pins 25 & 26 closed

CPU SPEED SELECTION (CX 6X86L)			
CPU speed	Clock speed	Multiplier	JP4
133MHz	66MHz	2x	Pins 23 & 24 closed
150MHz	60MHz	2x	Pins 5 & 6 closed
166MHz	66MHz	2x	Pins 7 & 8 closed
200MHz	66MHz	2x	Pins 25 & 26 closed

CPU SPEED SELECTION (IBM 6X86)			
CPU speed	Clock speed	Multiplier	JP4
133MHz	66MHz	2x	Pins 23 & 24 closed
150MHz	60MHz	2x	Pins 5 & 6 closed
166MHz	66MHz	2x	Pins 7 & 8 closed
200MHz	66MHz	2x	Pins 25 & 26 closed

Continued on next page. . .

... continued from previous page

CPU SPEED SELECTION (IBM 6X86L)			
CPU speed	Clock speed	Multiplier	JP4
133MHz	66MHz	2x	Pins 23 & 24 closed
150MHz	60MHz	2x	Pins 5 & 6 closed
166MHz	66MHz	2x	Pins 7 & 8 closed
200MHz	66MHz	2x	Pins 25 & 26 closed

CPU SPEED SELECTION (CX 6X86MX)			
CPU speed	Clock speed	Multiplier	JP4
166MHz	66MHz	2.5x	Pins 9 & 10 closed
200MHz	66MHz	3x	Pins 11 & 12 closed
233MHz	66MHz	4x	Pins 15 & 16 closed
266MHz	66MHz	4.5x	Pins 19 & 20 closed

CPU SPEED SELECTION (IBM 6X86MX)			
CPU speed	Clock speed	Multiplier	JP4
166MHz	66MHz	2.5x	Pins 9 & 10 closed
200MHz	66MHz	3x	Pins 11 & 12 closed
233MHz	66MHz	4x	Pins 15 & 16 closed
266MHz	66MHz	4.5x	Pins 19 & 20 closed

CPU SPEED SELECTION (AM K5/K6)			
CPU speed	Clock speed	Multiplier	JP4
90MHz	60MHz	1.5x	Pins 1 & 2 closed
100MHz	66MHz	1.5x	Pins 3 & 4 closed
120MHz	60MHz	2x	Pins 5 & 6 closed
133MHz	66MHz	2x	Pins 7 & 8 closed
150MHz	60MHz	2.5x	Pins 9 & 10 closed
166MHz	66MHz	2.5x	Pins 11 & 12 closed
180MHz	60MHz	3x	Pins 13 & 14 closed
200MHz	66MHz	3x	Pins 15 & 16 closed
225MHz	75MHz	3.5x	Pins 17 & 18 closed
233MHz	66MHz	4x	Pins 19 & 20 closed
266MHz	66MHz	4.5x	Pins 21 & 22 closed

Continued on next page. ...

EPOX COMPUTER CO., LTD.  
P 5 5 - B T

... continued from previous page

CPU SPEED SELECTION (INTEL)			
CPU speed	Clock speed	Multiplier	JP4
90MHz	60MHz	1.5x	Pins 1 & 2 closed
100MHz	66MHz	1.5x	Pins 3 & 4 closed
120MHz	60MHz	2x	Pins 5 & 6 closed
133MHz	66MHz	2x	Pins 7 & 8 closed
150MHz	60MHz	2.5x	Pins 9 & 10 closed
166MHz	66MHz	2.5x	Pins 11 & 12 closed
180MHz	60MHz	3x	Pins 13 & 14 closed
200MHz	66MHz	3x	Pins 15 & 16 closed
225MHz	75MHz	3.5x	Pins 17 & 18 closed
233MHz	66MHz	4x	Pins 19 & 20 closed
266MHz	66MHz	4.5x	Pins 21 & 22 closed

CPU VOLTAGE SELECTION	
Voltage	J18
2.8v	Pins 1 & 5 closed
2.9v	Pins 2 & 6 closed
3.2v	Pins 3 & 7 closed
3.5v	Pins 4 & 8 closed

FLASH BIOS SELECTION		
Setting	J9	J10
5v	Pins 2 & 3 closed	Pins 2 & 3 closed
12v	Pins 1 & 2 closed	Pins 1 & 2 closed