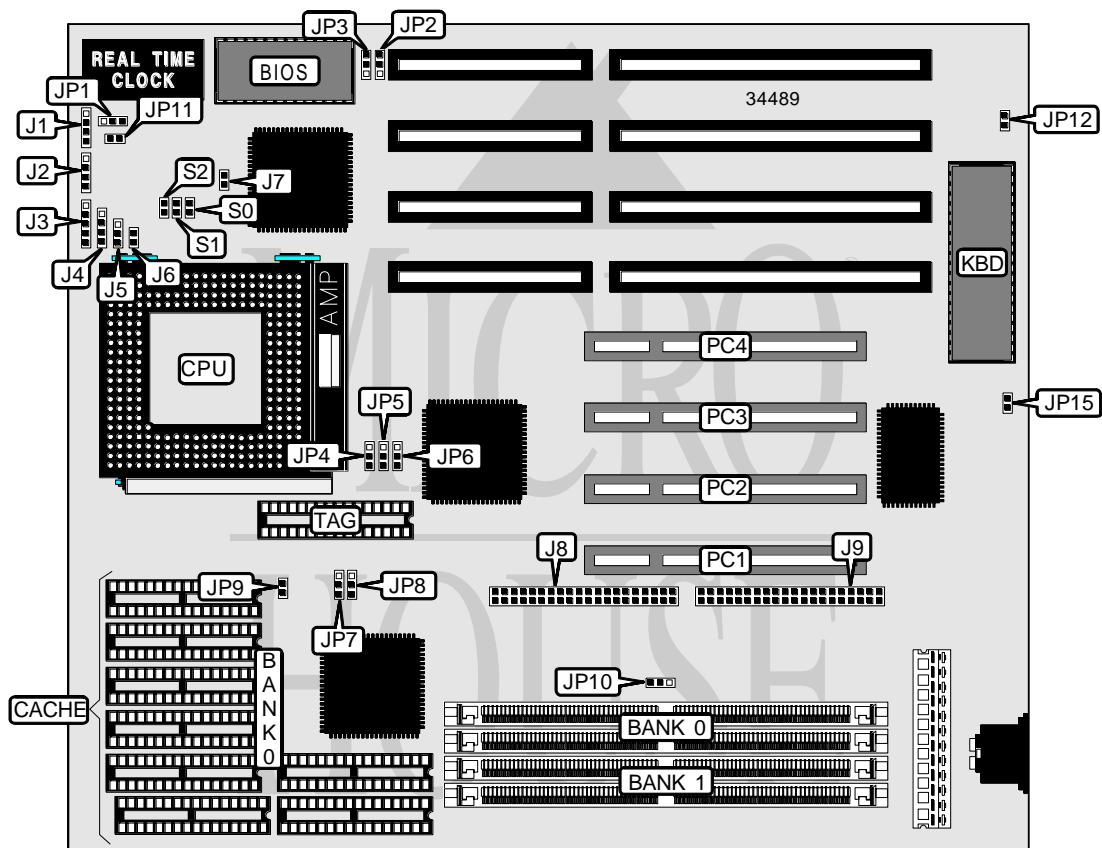


DTK COMPUTER, INC.
PAM-0032S (VER. 1.00)

Processor	Pentium
Processor Speed	60/66MHz
Chip Set	SIS
Video Chip Set	None
Maximum Onboard Memory	128MB
Maximum Video Memory	None
Cache	256/512/1024KB
BIOS	Award
Dimensions	250mm x 220mm
I/O Options	32-bit PCI slots (4), green PC connector, IDE interfaces (2)
NPU Options	None



Continued on next page...

DTK COMPUTER, INC.
PAM-0032S (VER. 1.00)

... continued from previous page

CONNECTIONS			
Purpose	Location	Purpose	Location
Chassis fan power	J1	Reset switch	J7
IDE interface LED	J2	IDE interface 2	J8
Power LED & keylock	J3	IDE interface 1	J9
Speaker	J4	Green PC connector	JP11
Turbo switch	J5	32-bit PCI slots	PC1 – PC4
Turbo LED	J6		

USER CONFIGURABLE SETTINGS		
Function	Label	Position
í Turbo enabled	J5	Pins 1 & 2 closed
Turbo disabled	J5	Pins 2 & 3 closed
í CMOS memory normal operation	JP1	Open
CMOS memory clear	JP1	Closed
í Cache invalidate select write cycle	JP4	Pins 2 & 3 closed
Cache invalidate select always invalidated	JP4	Pins 1 & 2 closed
í CPU pipeline mode disabled	JP5	Pins 1 & 2 closed
CPU pipeline mode enabled	JP5	Pins 2 & 3 closed
í Cache type select write back	JP6	Pins 1 & 2 closed
Cache type select write through	JP6	Pins 2 & 3 closed
í Monitor type select color	JP12	Closed
Monitor type select monochrome	JP12	Open
í IDE interface enabled	JP15	Open
IDE interface disabled	JP15	Closed

DRAM CONFIGURATION		
Size	Bank 0	Bank 1
2MB	(2) 256K x 36	None
4MB (A)	(2) 512K x 36	None
4MB (B)	(2) 256K x 36	(2) 256K x 36
6MB	(2) 512K x 36	(2) 256K x 36
8MB (A)	(2) 1M x 36	None
8MB (B)	(2) 512K x 36	(2) 512K x 36
10MB	(2) 256K x 36	(2) 1M x 36
12MB	(2) 512K x 36	(2) 1M x 36
16MB (A)	(2) 2M x 36	(2) 1M x 36
16MB (B)	(2) 1M x 36	(2) 256K x 36
18MB	(2) 2M x 36	(2) 256K x 36
20MB	(2) 512K x 36	(2) 2M x 36
24MB	(2) 256K x 36	(2) 1M x 36
32MB (A)	(2) 4M x 36	None
32MB (B)	(2) 2M x 36	(2) 2M x 36
34MB	(2) 256K x 36	(2) 4M x 36

Continued on next page...

DTK COMPUTER, INC.
PAM-0032S (VER. 1.00)

... continued from previous page

DRAM CONFIGURATION (CON'T)		
Size	Bank 0	Bank 1
36MB	(2) 512K x 36	(2) 4M x 36
40MB	(2) 1M x 36	(2) 4M x 36
48MB	(2) 2M x 36	(2) 4M x 36
64MB (A)	(2) 8M x 36	None
64MB (B)	(2) 4M x 36	(2) 4M x 36
66MB	(2) 8M x 36	(2) 256K x 36
68MB	(2) 512K x 36	(2) 8M x 36
72MB	(2) 8M x 36	(2) 1M x 36
80MB	(2) 2M x 36	(2) 8M x 36
96MB	(2) 4M x 36	(2) 8M x 36
128MB	(2) 8M x 36	(2) 8M x 36

DRAM JUMPER CONFIGURATION	
Size	JP10
2MB	Pins 1 & 2 closed
4MB (A)	Pins 2 & 3 closed
4MB (B)	Pins 1 & 2 closed
6MB	Pins 2 & 3 closed
8MB (A)	Pins 1 & 2 closed
8MB (B)	Pins 2 & 3 closed
10MB	Pins 1 & 2 closed
12MB	Pins 2 & 3 closed
16MB (A)	Pins 2 & 3 closed
16MB (B)	Pins 1 & 2 closed
18MB	Pins 2 & 3 closed
20MB	Pins 2 & 3 closed
24MB	Pins 2 & 3 closed
32MB (A)	Pins 1 & 2 closed
32MB (B)	Pins 2 & 3 closed
34MB	Pins 1 & 2 closed
36MB	Pins 2 & 3 closed
40MB	Pins 1 & 2 closed
48MB	Pins 2 & 3 closed
64MB (A)	Pins 2 & 3 closed
64MB (B)	Pins 1 & 2 closed
66MB	Pins 2 & 3 closed
68MB	Pins 2 & 3 closed
72MB	Pins 2 & 3 closed
80MB	Pins 2 & 3 closed
96MB	Pins 2 & 3 closed
128MB	Pins 2 & 3 closed

Continued on next page...

... continued from previous page

CACHE CONFIGURATION		
Size	Bank 0	TAG
256KB	(8) 32K x 8	(1) 8K x 8
512KB	(8) 64K x 8	(1) 32K x 8
1MB	(8) 128K x 8	(1) 32K x 8

CACHE JUMPER CONFIGURATION			
Size	JP7	JP8	JP9
256KB	Pins 1 & 2 closed	Pins 1 & 2 closed	Closed
512KB	Pins 2 & 3 closed	Pins 1 & 2 closed	Open
1MB	Pins 2 & 3 closed	Pins 2 & 3 closed	Closed

CPU SPEED SELECTION			
Speed	S0	S1	S2
50MHz	Closed	Open	Open
60MHz	Open	Closed	Open
66MHz	Closed	Open	Closed

BIOS SELECTION		
Setting	JP2	JP3
EPROM	Pins 2 & 3 closed	Pins 2 & 3 closed
Flash	Pins 1 & 2 closed	Pins 1 & 2 closed