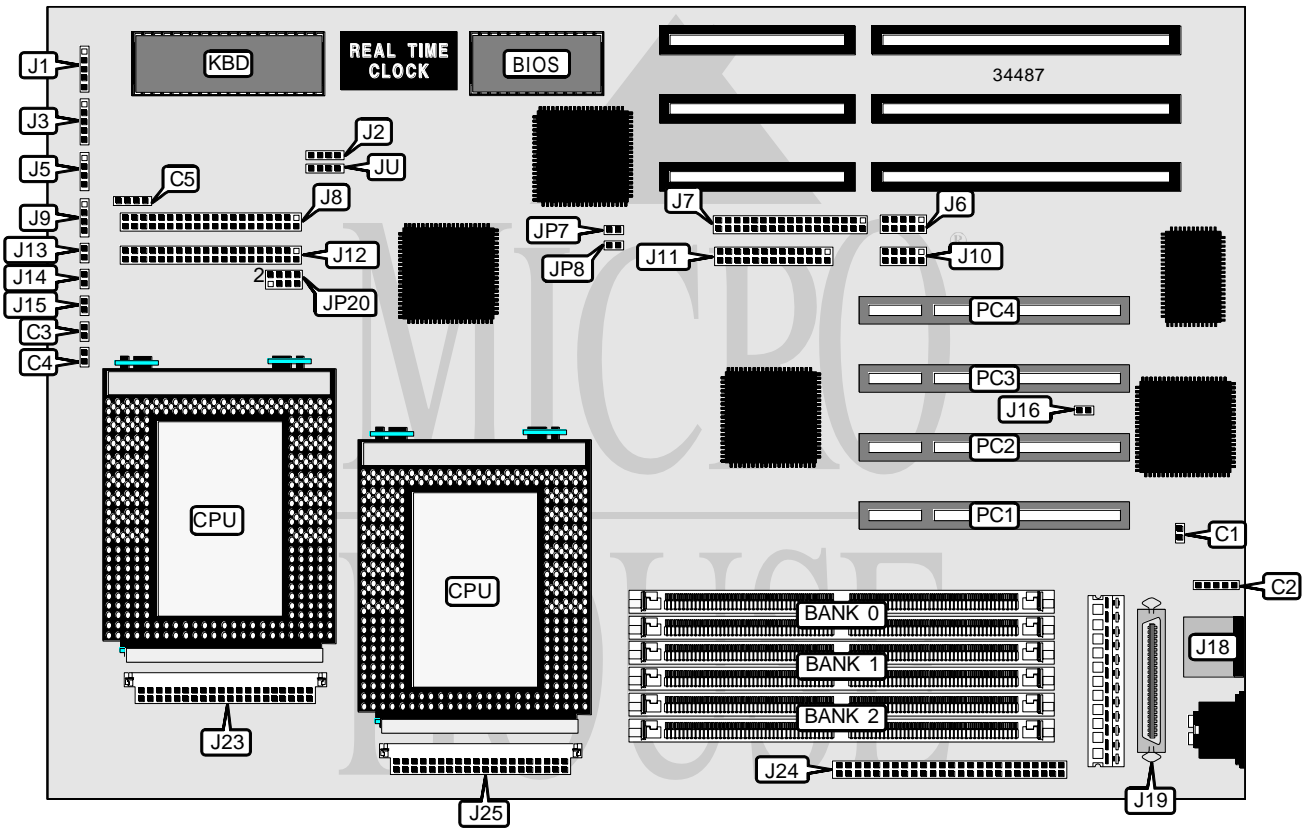


DTK COMPUTER, INC.
PRM-00321 (VER. 1.00)

Processor	Pentium Pro
Processor Speed	180/200MHz
Chip Set	Intel
Video Chip Set	None
Maximum Onboard Memory	384MB (EDO supported)
Maximum Video Memory	None
Cache	256/512KB (located on Pentium Pro CPU)
BIOS	AMI
Dimensions	330mm x 220mm
I/O Options	32-bit PCI slots (4), floppy drive interface, green PC connector, IDE interfaces (2), SCSI interface, Wide SCSI interface, parallel port, PS/2 mouse port, serial ports (2), IR connector, USB connectors (2), VRM connectors (2)
NPU Options	None



Continued on next page. . .

... continued from previous page

CONNECTIONS			
Purpose	Location	Purpose	Location
IR connector	J1	Reset switch	J13
USB connector	J2	Turbo LED	J14
Power LED & keylock	J3	Green PC connector	J15
Speaker	J5	SCSI interface LED	J16
Serial port 1	J6	PS/2 mouse port	J18
Floppy drive interface	J7	Wide SCSI interface	J19
IDE interface 2	J8	VRM connector	J23
IDE interface LED	J9	SCSI interface	J24
Serial port 2	J10	VRM connector	J25
Parallel port	J11	USB connector	JU
IDE interface 1	J12	32-bit PCI slots	PC1 – PC4

USER CONFIGURABLE SETTINGS		
Function	Label	Position
í Factory configured - do not alter	C1	Unidentified
í Factory configured - do not alter	C2	Unidentified
í Factory configured - do not alter	C3	Unidentified
í Factory configured - do not alter	C4	Unidentified
í Factory configured - do not alter	C5	Unidentified

DRAM CONFIGURATION			
Size	Bank 0	Bank 1	Bank 2
2MB	(2) 256K x 36	None	None
4MB	(2) 256K x 36	(2) 256K x 36	None
4MB	(2) 512K x 36	None	None
8MB	(2) 512K x 36	(2) 512K x 36	None
10MB	(2) 1M x 36	(2) 256K x 36	None
16MB	(2) 1M x 36	(2) 1M x 36	None
16MB	(2) 2M x 36	None	None
18MB	(2) 2M x 36	(2) 256K x 36	None
20MB	(2) 2M x 36	(2) 512K x 36	None
24MB	(2) 2M x 36	(2) 1M x 36	None
24MB	(2) 1M x 36	(2) 1M x 36	(2) 1M x 36
26MB	(2) 2M x 36	(2) 1M x 36	(2) 256K x 36
28MB	(2) 2M x 36	(2) 1M x 36	(2) 512K x 36
32MB	(2) 4M x 36	None	None
32MB	(2) 2M x 36	(2) 2M x 36	None
34MB	(2) 4M x 36	(2) 256K x 36	None
40MB	(2) 4M x 36	(2) 1M x 36	None
40MB	(2) 4M x 36	(2) 512K x 36	(2) 512K x 36
42MB	(2) 4M x 36	(2) 1M x 36	(2) 256K x 36
48MB	(2) 4M x 36	(2) 2M x 36	None

Continued on next page...

DTK COMPUTER, INC.
PRM-00321 (VER. 1.00)

... continued from previous page

DRAM CONFIGURATION (CON'T)			
Size	Bank 0	Bank 1	Bank 2
48MB	(2) 4M x 36	(2) 1M x 36	(2) 1M x 36
50MB	(2) 4M x 36	(2) 2M x 36	(2) 256K x 36
56MB	(2) 4M x 36	(2) 2M x 36	(2) 1M x 36
64MB	(2) 8M x 36	None	None
64MB	(2) 4M x 36	(2) 4M x 36	None
74MB	(2) 8M x 36	(2) 1M x 36	(2) 256K x 36
80MB	(2) 8M x 36	(2) 2M x 36	None
80MB	(2) 8M x 36	(2) 1M x 36	(2) 1M x 36
82MB	(2) 8M x 36	(2) 2M x 36	(2) 256K x 36
84MB	(2) 8M x 36	(2) 2M x 36	(2) 512K x 36
88MB	(2) 8M x 36	(2) 2M x 36	(2) 1M x 36
96MB	(2) 8M x 36	(2) 4M x 36	None
96MB	(2) 4M x 36	(2) 4M x 36	(2) 4M x 36
96MB	(2) 8M x 36	(2) 2M x 36	(2) 2M x 36
98MB	(2) 8M x 36	(2) 4M x 36	(2) 256K x 36
100MB	(2) 8M x 36	(2) 4M x 36	(2) 512K x 36
128MB	(2) 8M x 36	(2) 4M x 36	(2) 4M x 36
128MB	(2) 16M x 36	None	None
128MB	(2) 8M x 36	(2) 8M x 36	None
132MB	(2) 8M x 36	(2) 8M x 36	(2) 512K x 36
136MB	(2) 8M x 36	(2) 8M x 36	(2) 1M x 36
136MB	(2) 16M x 36	(2) 1M x 36	None
144MB	(2) 16M x 36	(2) 2M x 36	None
144MB	(2) 16M x 36	(2) 1M x 36	(2) 1M x 36
152MB	(2) 16M x 36	(2) 2M x 36	(2) 1M x 36
160MB	(2) 16M x 36	(2) 4M x 36	None
160MB	(2) 16M x 36	(2) 2M x 36	(2) 2M x 36
168MB	(2) 16M x 36	(2) 4M x 36	(2) 1M x 36
176MB	(2) 16M x 36	(2) 4M x 36	(2) 2M x 36
192MB	(2) 16M x 36	(2) 8M x 36	None
192MB	(2) 16M x 36	(2) 4M x 36	(2) 4M x 36
200MB	(2) 16M x 36	(2) 8M x 36	(2) 1M x 36
208MB	(2) 16M x 36	(2) 8M x 36	(2) 2M x 36
224MB	(2) 16M x 36	(2) 8M x 36	(2) 4M x 36
256MB	(2) 16M x 36	(2) 16M x 36	None
256MB	(2) 16M x 36	(2) 8M x 36	(2) 8M x 36
264MB	(2) 16M x 36	(2) 16M x 36	(2) 1M x 36
272MB	(2) 16M x 36	(2) 16M x 36	(2) 2M x 36
288MB	(2) 16M x 36	(2) 16M x 36	(2) 4M x 36
320MB	(2) 16M x 36	(2) 16M x 36	(2) 8M x 36
384MB	(2) 16M x 36	(2) 16M x 36	(2) 16M x 36

Note: Board accepts EDO memory. Board also accepts x 32 SIMMs.

Continued on next page. . .

... continued from previous page

CACHE CONFIGURATION

Note: 256KB/512KB cache is located on the Pentium Pro CPU.

CPU SPEED SELECTION

CPU speed	Clock speed	Multiplier	JP7	JP8	JP20
180MHz	60MHz	3x	Closed	Open	1 & 2, 3 & 4, 7 & 8
200MHz	66MHz	3x	Open	Closed	1 & 2, 3 & 4, 7 & 8

Note: Pins designated should be in the closed position.