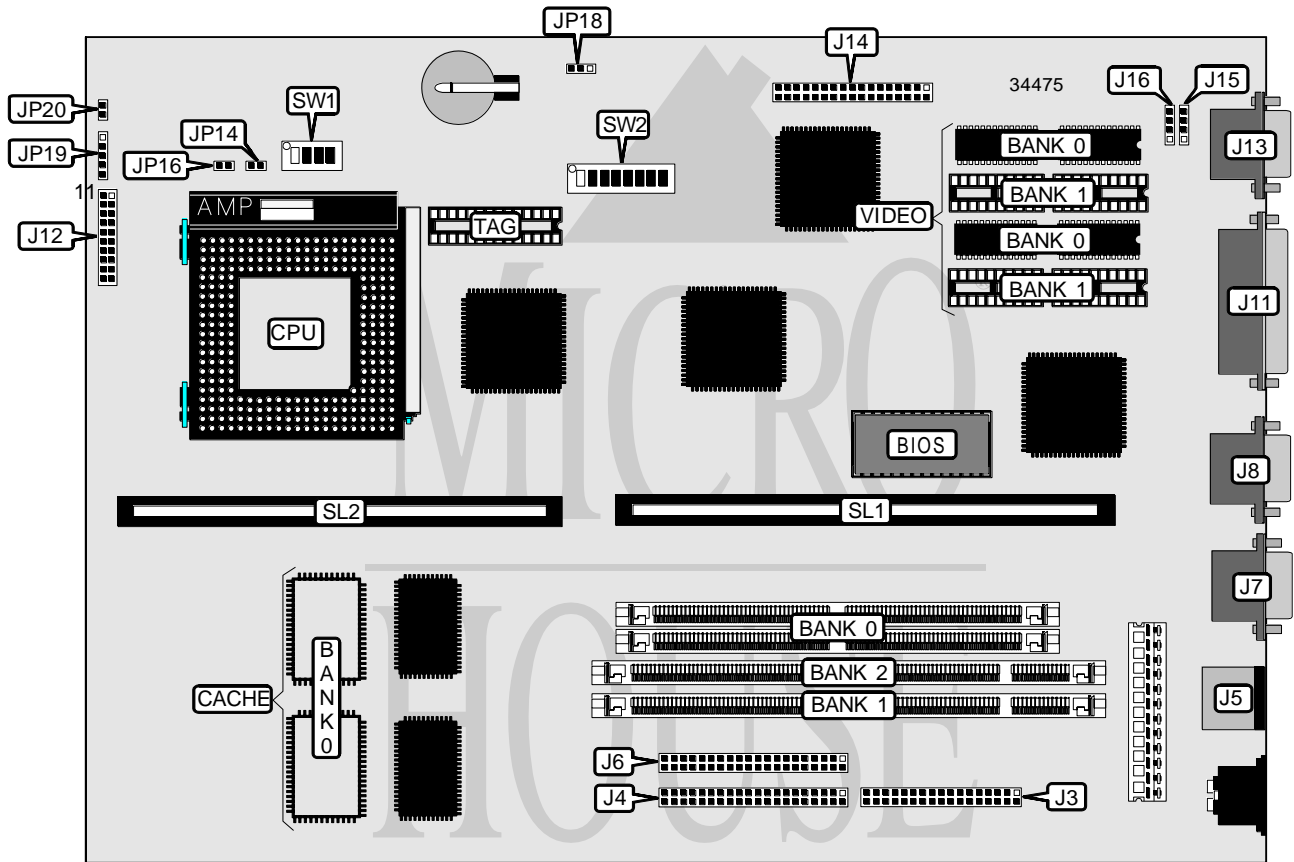


TMC RESEARCH CORPORATION

LI5TV (VER. 1.0A)

Processor	CX 6X86/CX 6X86L/AM K5/AM K6/Pentium
Processor Speed	75/90/100/120/133/150/166/200/233MHz
Chip Set	Intel
Video Chip Set	S3
Maximum Onboard Memory	64MB (EDO supported)
Maximum Video Memory	4MB
Cache	256/512KB
BIOS	AMI
Dimensions	330mm x 218mm
I/O Options	Floppy drive interface, green PC connector, IDE interfaces (2), parallel port, PS/2 mouse port, serial ports (2), VGA feature connector, VGA port, riser slot, cache slot, IR connector, USB connectors (2)
NPU Options	None



Continued on next page . . .

TMC RESEARCH CORPORATION
LI5TV (VER. 1.0A)

... continued from previous page

CONNECTIONS			
Purpose	Location	Purpose	Location
Floppy drive interface	J3	IDE interface LED	J12/pins 10 & 20
IDE interface 2	J4	Power LED & keylock	J12/pins 11 - 15
PS/2 mouse port	J5	VGA port	J13
IDE interface 1	J6	VGA feature connector	J14
Serial port 1	J7	USB connector	J15
Serial port 2	J8	USB connector	J16
Parallel port	J11	IR connector	JP19
Speaker	J12/pins 1 - 4	Chassis fan power	JP20
Green PC connector	J12/pins 6 & 16	Riser slot	SL1
Turbo LED	J12/pins 8 & 18	Cache slot	SL2
Reset switch	J12/pins 9 & 19		

USER CONFIGURABLE SETTINGS		
Function	Label	Position
í CMOS memory normal operation	JP18	Pins 1 & 2 closed
CMOS memory clear	JP18	Pins 2 & 3 closed
í Factory configured - do not alter	SW2/7	Unidentified
í Factory configured - do not alter	SW2/8	Unidentified

DRAM CONFIGURATION	
Size	Bank 0
8MB	(2) 1M x 36
16MB	(2) 2M x 36
32MB	(2) 4M x 36
64MB	(2) 8M x 36

DIMM CONFIGURATION		
Size	Bank 1	Bank 2
8MB	(1) 1M x 64	None
16MB	(1) 2M x 64	None
16MB	(1) 1M x 64	(1) 1M x 64
24MB	(1) 2M x 64	(1) 1M x 64
32MB	(1) 4M x 64	None
32MB	(1) 2M x 64	(1) 2M x 64
40MB	(1) 4M x 64	(1) 1M x 64
48MB	(1) 4M x 64	(1) 2M x 64
64MB	(1) 4M x 64	(1) 4M x 64

Continued on next page...

TMC RESEARCH CORPORATION
LI5TV (VER. 1.0A)

... continued from previous page

CACHE CONFIGURATION			
Size	Bank 0	SL2	TAG
256KB	(2) 32K x 32	Not installed	Unidentified
512KB	(2) 32K x 32	256KB module installed	Unidentified

VIDEO MEMORY CONFIGURATION		
Size	Bank 0	Bank 1
2MB	(4) 256K x 16	None
4MB	(4) 256K x 16	(4) 256K x 16

CPU SPEED SELECTION (CYRIX)								
CPU speed	Clock speed	Multiplier	SW2/1	SW2/2	SW2/3	SW2/4	SW2/5	SW2/6
120MHz	50MHz	2x	On	On	On	Off	On	Off
133MHz	55MHz	2x	On	On	Off	Off	On	Off
150MHz	60MHz	2x	Off	On	On	Off	On	Off
166MHz	66MHz	2x	On	Off	On	Off	On	Off

CPU SPEED SELECTION (AM K5)								
CPU speed	Clock speed	Multiplier	SW2/1	SW2/2	SW2/3	SW2/4	SW2/5	SW2/6
75MHz	50MHz	1.5x	On	On	On	Off	Off	Off
90MHz	60MHz	1.5x	Off	On	On	Off	Off	Off
100MHz	66MHz	1.5x	On	Off	On	Off	Off	Off
120MHz	60MHz	1.5x	Off	On	On	Off	Off	Off
133MHz	66MHz	1.5x	On	Off	On	Off	On	Off
150MHz	60MHz	1.75x	Off	On	On	Off	On	On
166MHz	66MHz	1.75x	On	Off	On	Off	On	On

CPU SPEED SELECTION (AM K6)								
CPU speed	Clock speed	Multiplier	SW2/1	SW2/2	SW2/3	SW2/4	SW2/5	SW2/6
166MHz	66MHz	1.75x	On	Off	On	Off	On	On
200MHz	66MHz	3x	On	Off	On	Off	Off	On

CPU SPEED SELECTION (INTEL)								
CPU speed	Clock speed	Multiplier	SW2/1	SW2/2	SW2/3	SW2/4	SW2/5	SW2/6
75MHz	50MHz	1.5x	On	On	On	Off	Off	Off
90MHz	60MHz	1.5x	Off	On	On	Off	Off	Off
100MHz	66MHz	1.5x	On	Off	On	Off	Off	Off
120MHz	60MHz	2x	Off	On	On	Off	On	Off
133MHz	66MHz	2x	On	Off	On	Off	On	Off
150MHz	60MHz	2.5x	Off	On	On	Off	On	On
166MHz	66MHz	2.5x	On	Off	On	Off	On	On
200MHz	66MHz	3x	On	Off	On	Off	Off	On
233MHz	66MHz	3.5x	On	Off	On	Off	Off	Off

Continued on next page...

TMC RESEARCH CORPORATION
LI5TV (VER. 1.0A)

... continued from previous page

CPU VOLTAGE SELECTION (SINGLE)						
Voltage	SW1/1	SW1/2	SW1/3	SW1/4	JP14	JP16
3.5v	On	On	On	On	Closed	Open

CPU VOLTAGE SELECTION (DUAL)							
Voltage	V core	SW1/1	SW1/2	SW1/3	SW1/4	JP14	JP16
3.3v	2.5v	On	Off	On	Off	Open	Closed
3.3v	2.6v	Off	On	On	Off	Open	Closed
3.3v	2.7v	On	On	On	Off	Open	Closed
3.3v	2.8v	Off	Off	Off	On	Open	Closed
3.3v	2.9v	On	Off	Off	On	Open	Closed
3.3v	3.0v	Off	On	Off	On	Open	Closed
3.3v	3.2v	Off	Off	On	On	Open	Closed
3.3v	3.5v	On	On	On	On	Open	Closed