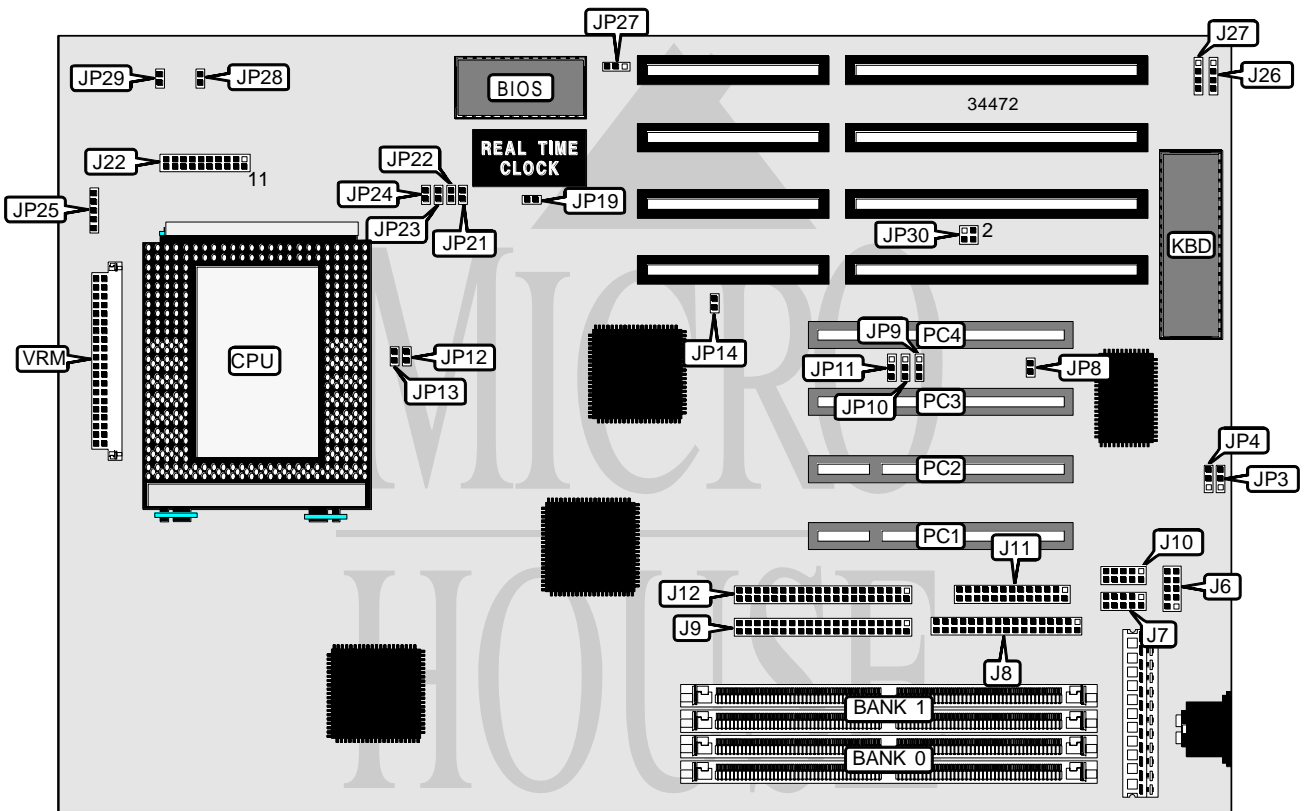


# TMC RESEARCH CORPORATION

## AI6NF (VER. 1.1A)

<b>Processor</b>	Pentium Pro
<b>Processor Speed</b>	150/166/180/200MHz
<b>Chip Set</b>	Intel
<b>Video Chip Set</b>	None
<b>Maximum Onboard Memory</b>	256MB (EDO supported)
<b>Maximum Video Memory</b>	None
<b>Cache</b>	256/512KB (located on Pentium Pro CPU)
<b>BIOS</b>	AMI
<b>Dimensions</b>	330mm x 218mm
<b>I/O Options</b>	32-bit PCI slots (4), floppy drive interface, green PC connector, IDE interfaces (2), parallel port, PS/2 mouse interface, serial ports (2), IR connector, VRM connector, USB connector
<b>NPU Options</b>	None



Continued on next page...

TMC RESEARCH CORPORATION  
AI6NF (VER. 1.1A)

... continued from previous page

CONNECTIONS			
Purpose	Location	Purpose	Location
PS/2 mouse interface	J6	Turbo LED	J22/pins 8 & 18
Serial port 1	J7	Reset switch	J22/pins 9 & 19
Floppy drive interface	J8	IDE interface LED	J22/pins 10 & 20
IDE interface 2	J9	Power LED & keylock	J22/pins 11 - 15
Serial port 2	J10	IR connector	JP25
Parallel port	J11	Chassis fan power	JP28
IDE interface 1	J12	Chassis fan power	JP29
Speaker	J22/pins 1 - 4	32-bit PCI slots	PC1 – PC4
Green PC connector	J22/pins 6 & 16	VRM connector	VRM

USER CONFIGURABLE SETTINGS		
Function	Label	Position
í Factory configured – do not alter	J26	Unidentified
í Factory configured – do not alter	J27	Unidentified
On board I/O enabled	JP8	Open
On board I/O disabled	JP8	Closed
Parallel port IRQ select IRQ7	JP11	Pins 2 & 3 closed
Parallel port IRQ select IRQ5	JP11	Pins 1 & 2 closed
í CMOS memory normal operation	JP19	Open
CMOS memory clear	JP19	Closed
í Flash BIOS voltage select 12v	JP27	Pins 1 & 2 closed
Flash BIOS voltage select 5v	JP27	Pins 2 & 3 closed

DRAM CONFIGURATION		
Size	Bank 0	Bank 1
8MB	(2) 1M x 36	None
16MB	(2) 2M x 36	None
16MB	(2) 1M x 36	(2) 1M x 36
24MB	(2) 2M x 36	(2) 1M x 36
32MB	(2) 4M x 36	None
32MB	(2) 2M x 36	(2) 2M x 36
40MB	(2) 4M x 36	(2) 1M x 36
48MB	(2) 4M x 36	(2) 2M x 36
64MB	(2) 8M x 36	None
64MB	(2) 4M x 36	(2) 4M x 36
72MB	(2) 8M x 36	(2) 1M x 36
80MB	(2) 8M x 36	(2) 2M x 36
96MB	(2) 8M x 36	(2) 4M x 36
128MB	(2) 8M x 36	(2) 8M x 36
128MB	(2) 16M x 36	None

Continued on next page. . .

TMC RESEARCH CORPORATION  
AI6NF (VER. 1.1A)

... continued from previous page

DRAM CONFIGURATION (CON'T)		
Size	Bank 0	Bank 1
136MB	(2) 16M x 36	(2) 1M x 36
144MB	(2) 16M x 36	(2) 2M x 36
160MB	(2) 16M x 36	(2) 4M x 36
192MB	(2) 16M x 36	(2) 8M x 36
256MB	(2) 16M x 36	(2) 16M x 36

Note: Board accepts EDO memory.

CACHE CONFIGURATION
Note: 256KB/512KB cache is located on the Pentium Pro CPU.

CPU SPEED SELECTION						
CPU speed	Clock speed	Multiplier	JP12	JP13	JP14	JP21
150MHz	60MHz	2.5x	Open	Closed	Closed	Open
166MHz	66MHz	2.5x	Closed	Open	Closed	Open
180MHz	60MHz	3x	Open	Closed	Closed	Closed
200MHz	66MHz	3x	Closed	Open	Closed	Closed

CPU SPEED SELECTION (CON'T)					
CPU speed	Clock speed	Multiplier	JP22	JP23	JP24
150MHz	60MHz	2.5x	Closed	Closed	Closed
166MHz	66MHz	2.5x	Closed	Closed	Closed
180MHz	60MHz	3x	Open	Closed	Closed
200MHz	66MHz	3x	Open	Closed	Closed

DMA CHANNEL SELECTION		
Channel	JP9	JP10
1	Pins 1 & 2 closed	Pins 1 & 2 closed
3	Pins 2 & 3 closed	Pins 2 & 3 closed

SERIAL PORT 2 SELECTION		
Setting	JP3	JP4
Used as COM	Pins 1 & 2 closed	Pins 1 & 2 closed
Used as IR connector	Pins 2 & 3 closed	Pins 2 & 3 closed

SERIAL PORT 1 INTERRUPT SELECTION		
Setting	IRQ	JP30
COM1	IRQ3	Pins 1 & 2, 3 & 4 closed
COM2	IRQ4	
COM1	IRQ4	Pins 1 & 3, 2 & 4 closed
COM2	IRQ3	