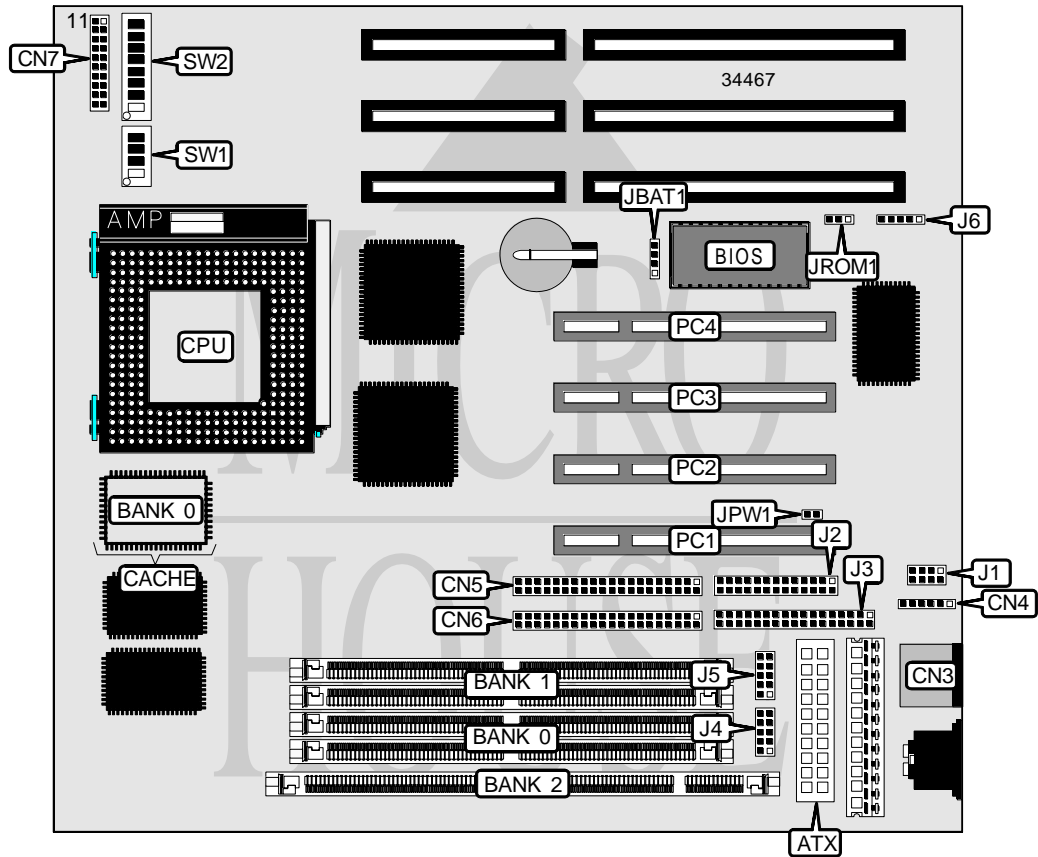


# TMC RESEARCH CORPORATION

## AI5VP (VER. 1.0A)

<b>Processor</b>	CX 6X86/CX 6X86L/CX 6X86MX/AM K5/AM K6/Pentium
<b>Processor Speed</b>	75/90/100/120/133/150/166/200/225/233MHz
<b>Chip Set</b>	VIA
<b>Video Chip Set</b>	None
<b>Maximum Onboard Memory</b>	256MB (EDO supported)
<b>Maximum Video Memory</b>	None
<b>Cache</b>	256/512KB
<b>BIOS</b>	Award
<b>Dimensions</b>	254mm x 218mm
<b>I/O Options</b>	32-bit PCI slots (4), floppy drive interface, green PC connector, IDE interfaces (2), parallel port, PS/2 mouse port, PS/2 mouse interface, serial ports (2), IR connector, USB connector, ATX power connector
<b>NPU Options</b>	None



*Continued on next page. . .*

TMC RESEARCH CORPORATION  
AI5VP (VER. 1.0A)

... continued from previous page

CONNECTIONS			
Purpose	Location	Purpose	Location
ATX power connector	ATX	IDE interface LED	CN7/pins 10 & 20
PS/2 mouse port	CN3	Power LED & keylock	CN7/pins 11 & 15
PS/2 mouse interface	CN4	USB connector	J1
IDE interface 1	CN5	Parallel port	J2
IDE interface 2	CN6	Floppy drive interface	J3
Speaker	CN7/pins 1 & 4	Serial port 1	J4
Green PC connector	CN7/pins 6 & 16	Serial port 2	J5
Soft off power supply	CN7/pins 7 & 17	IR connector	J6
Turbo LED	CN7/pins 8 & 18	32-bit PCI slots	PC1 – PC4
Reset switch	CN7/pins 9 & 19		

USER CONFIGURABLE SETTINGS		
Function	Label	Position
í CMOS memory normal operation	JBAT1	Pins 3 & 4 closed
CMOS memory clear	JBAT1	Pins 1 & 2 closed
í Factory configured - do not alter	JPW1	Unidentified
í Factory configured - do not alter	JROM1	Unidentified

DRAM CONFIGURATION		
Size	Bank 0	Bank 1
8MB	(2) 1M x 36	None
16MB	(2) 2M x 36	None
16MB	(2) 1M x 36	(2) 1M x 36
24MB	(2) 2M x 36	(2) 1M x 36
32MB	(2) 4M x 36	None
32MB	(2) 2M x 36	(2) 2M x 36
40MB	(2) 4M x 36	(2) 1M x 36
48MB	(2) 4M x 36	(2) 2M x 36
64MB	(2) 8M x 36	None
64MB	(2) 4M x 36	(2) 4M x 36
72MB	(2) 8M x 36	(2) 1M x 36
80MB	(2) 8M x 36	(2) 2M x 36
96MB	(2) 8M x 36	(2) 4M x 36
128MB	(2) 8M x 36	(2) 8M x 36
256MB	(2) 16M x 36	(2) 16M x 36

Note: Board accepts EDO memory.

DIMM CONFIGURATION	
Size	Bank 2
8MB	(1) 1M x 64
16MB	(1) 2M x 64
32MB	(1) 4M x 64

Continued on next page...

TMC RESEARCH CORPORATION  
AI5VP (VER. 1.0A)

... continued from previous page

CACHE CONFIGURATION	
Size	Bank 0
256KB	(1) 32K x 64
512KB	(1) 64K x 64

CPU SPEED SELECTION (CX 6X86/6X86L)						
CPU speed	Clock speed	Multiplier	SW1/1	SW1/2	SW1/3	SW1/4
120MHz	50MHz	2x	On	Off	Off	Off
133MHz	55MHz	2x	On	Off	Off	Off
150MHz	60MHz	2x	On	Off	Off	Off
166MHz	66MHz	2x	On	Off	Off	Off
200MHz	75MHz	2x	On	Off	Off	Off

CPU SPEED SELECTION (CX 6X86/6X86L, CON'T)						
CPU speed	Clock speed	Multiplier	SW1/5	SW1/6	SW1/7	SW1/8
120MHz	50MHz	2x	On	On	On	Off
133MHz	55MHz	2x	On	On	Off	Off
150MHz	60MHz	2x	Off	On	On	Off
166MHz	66MHz	2x	On	Off	On	Off
200MHz	75MHz	2x	Off	On	Off	On

CPU SPEED SELECTION (CX 6X86MX)						
CPU speed	Clock speed	Multiplier	SW1/1	SW1/2	SW1/3	SW1/4
166MHz	60MHz	2.5x	On	On	Off	Off
200MHz	66MHz	2.5x	On	On	Off	Off
233MHz	66MHz	3x	Off	On	Off	Off
233MHz	75MHz	2.5x	On	On	Off	Off
266MHz	75MHz	3x	Off	On	Off	Off
266MHz	66MHz	3.5x	Off	Off	Off	Off

CPU SPEED SELECTION (CX 6X86MX, CON'T)						
CPU speed	Clock speed	Multiplier	SW1/5	SW1/6	SW1/7	SW1/8
166MHz	60MHz	2.5x	Off	On	On	Off
200MHz	66MHz	2.5x	On	Off	On	Off
233MHz	66MHz	3x	On	Off	On	Off
233MHz	75MHz	2.5x	Off	On	Off	On
266MHz	75MHz	3x	Off	On	Off	On
266MHz	66MHz	3.5x	On	Off	On	Off

Continued on next page...

TMC RESEARCH CORPORATION  
AI5VP (VER. 1.0A)

... continued from previous page

CPU SPEED SELECTION (AM K5)						
CPU speed	Clock speed	Multiplier	SW1/1	SW1/2	SW1/3	SW1/4
75MHz	50MHz	1.5x	Off	Off	Off	Off
90MHz	60MHz	1.5x	Off	Off	Off	Off
100MHz	66MHz	1.5x	Off	Off	Off	Off
120MHz	60MHz	1.5x	Off	Off	Off	Off
133MHz	66MHz	1.5x	On	Off	Off	Off
150MHz	60MHz	1.75x	On	On	Off	Off
166MHz	66MHz	1.75x	On	On	Off	Off

CPU SPEED SELECTION (AM K5, CON'T)						
CPU speed	Clock speed	Multiplier	SW1/5	SW1/6	SW1/7	SW1/8
75MHz	50MHz	1.5x	On	On	On	Off
90MHz	60MHz	1.5x	Off	On	On	Off
100MHz	66MHz	1.5x	On	Off	On	Off
120MHz	60MHz	1.5x	Off	On	On	Off
133MHz	66MHz	1.5x	On	Off	On	Off
150MHz	60MHz	1.75x	Off	On	On	Off
166MHz	66MHz	1.75x	On	Off	On	Off

CPU SPEED SELECTION (AM K6)						
CPU speed	Clock speed	Multiplier	SW1/1	SW1/2	SW1/3	SW1/4
166MHz	66MHz	1.75x	On	On	Off	Off
200MHz	66MHz	3x	Off	On	Off	Off
233MHz	66MHz	3.5x	Off	Off	Off	Off

CPU SPEED SELECTION (AM K6, CON'T)						
CPU speed	Clock speed	Multiplier	SW1/5	SW1/6	SW1/7	SW1/8
166MHz	66MHz	1.75x	On	Off	On	Off
200MHz	66MHz	3x	On	Off	On	Off
233MHz	66MHz	3.5x	On	Off	On	Off

CPU SPEED SELECTION (INTEL)						
CPU speed	Clock speed	Multiplier	SW1/1	SW1/2	SW1/3	SW1/4
75MHz	50MHz	1.5x	Off	Off	Off	Off
90MHz	60MHz	1.5x	Off	Off	Off	Off
100MHz	66MHz	1.5x	Off	Off	Off	Off
120MHz	60MHz	2x	On	Off	Off	Off
133MHz	66MHz	2x	On	Off	Off	Off
150MHz	60MHz	2.5x	On	On	Off	Off
166MHz	66MHz	2.5x	On	On	Off	Off
200MHz	66MHz	3x	Off	On	Off	Off
233MHz	66MHz	3.5x	Off	Off	Off	Off

Continued on next page. . .

TMC RESEARCH CORPORATION  
AI5VP (VER. 1.0A)

... continued from previous page

CPU SPEED SELECTION (INTEL, CON'T)						
CPU speed	Clock speed	Multiplier	SW1/5	SW1/6	SW1/7	SW1/8
75MHz	50MHz	1.5x	On	On	On	Off
90MHz	60MHz	1.5x	Off	On	On	Off
100MHz	66MHz	1.5x	On	Off	On	Off
120MHz	60MHz	2x	Off	On	On	Off
133MHz	66MHz	2x	On	Off	On	Off
150MHz	60MHz	2.5x	Off	On	On	Off
166MHz	66MHz	2.5x	On	Off	On	Off
200MHz	66MHz	3x	On	Off	On	Off
233MHz	66MHz	3.5x	On	Off	On	Off

CPU VOLTAGE SELECTION (SINGLE)				
Voltage	SW2/1	SW2/2	SW/3	SW/4
3.5v	On	On	On	On

CPU VOLTAGE SELECTION (DUAL)					
Voltage	V core	SW2/1	SW2/2	SW/3	SW/4
3.3v	2.0v	Off	Off	Off	Off
3.3v	2.6v	Off	On	On	Off
3.3v	2.7v	On	On	On	Off
3.3v	2.8v	Off	Off	Off	On
3.3v	2.9v	On	Off	Off	On
3.3v	3.0v	Off	On	Off	On
3.3v	3.1v	On	On	Off	On
3.3v	3.2v	Off	Off	On	On
3.3v	3.5v	On	On	On	On