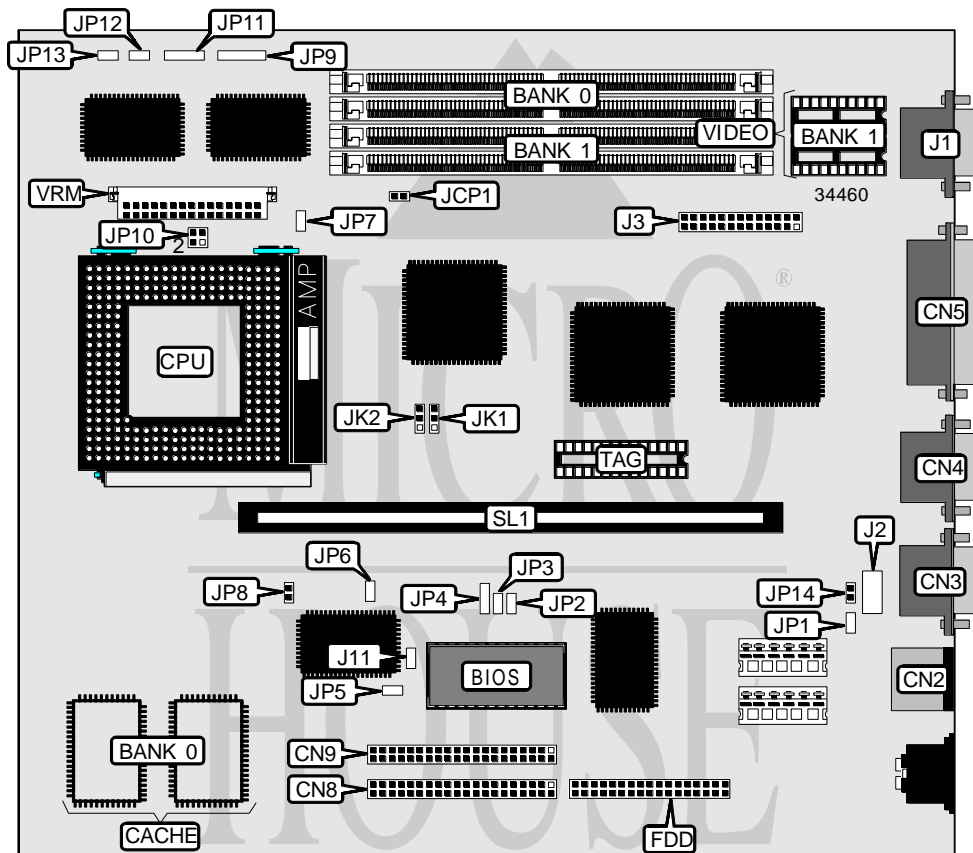


FIRST INTERNATIONAL COMPUTER, INC.

PAC-2002

Processor	CX M1/Pentium
Processor Speed	75/90/100/120/133/150/166MHz
Chip Set	VIA
Video Chip Set	Cirrus Logic
Maximum Onboard Memory	128MB
Maximum Video Memory	2MB
Cache	256KB
BIOS	Award
Dimensions	254mm x 218mm
I/O Options	Floppy drive interface, green PC connector, IDE interfaces (2), parallel port, PS/2 mouse port, serial ports (2), VGA feature connector, VGA port, riser slot, VRM connector, IR connector
NPU Options	None



Continued on next page. . .

FIRST INTERNATIONAL COMPUTER, INC.
PAC-2002

... continued from previous page

CONNECTIONS			
Purpose	Location	Purpose	Location
PS/2 mouse port	CN2	Outlet connector	JP2
Serial port 1	CN3	Green PC LED	JP3
Serial port 2	CN4	Green PC connector	JP5
Parallel port	CN5	Remote power connector	JP6
IDE interface 1	CN8	Chassis fan power	JP7
IDE interface 2	CN9	Power LED & keylock	JP9
Floppy drive interface	FDD	Speaker	JP11
VGA port	J1	Reset switch	JP12
IR connector	J2	IDE interface LED	JP13
VGA feature connector	J3	Riser slot	SL1
Software power control	JP1	VRM connector	VRM

USER CONFIGURABLE SETTINGS		
Function	Label	Position
í Factory configured - do not alter	J11	Unidentified
í CMOS memory normal operation	JCP1	Open
CMOS memory clear	JCP1	Closed
í Factory configured - do not alter	JP1	Unidentified
í Power supply type select regular	JP14	Closed
Power supply type select remote	JP14	Open

DRAM CONFIGURATION		
Size	Bank 0	Bank 1
2MB	(2) 256K x 36	None
4MB	(2) 256K x 36	(2) 256K x 36
8MB	(2) 1M x 36	None
10MB	(2) 1M x 36	(2) 256K x 36
16MB	(2) 2M x 36	None
16MB	(2) 1M x 36	(2) 1M x 36
18MB	(2) 2M x 36	(2) 256K x 36
32MB	(2) 4M x 36	None
32MB	(2) 2M x 36	(2) 2M x 36
34MB	(2) 4M x 36	(2) 256K x 36
40MB	(2) 4M x 36	(2) 1M x 36
48MB	(2) 4M x 36	(2) 2M x 36
64MB	(2) 8M x 36	None
64MB	(2) 4M x 36	(2) 4M x 36
72MB	(2) 8M x 36	(2) 1M x 36
128MB	(2) 8M x 36	(2) 8M x 36

CACHE CONFIGURATION		
Size	Bank 0	TAG
256KB	(2) 32K x 32	(1) 32K x 8

Continued on next page...

FIRST INTERNATIONAL COMPUTER, INC.
PAC-2002

... continued from previous page

VIDEO MEMORY CONFIGURATION		
Size	Bank 0	Bank 1
1MB	1MB	None
2MB	1MB	(2) 256K x 16

Note: The location of bank 0 is unidentified.

CPU SPEED SELECTION (CYRIX)					
CPU speed	Clock speed	Multiplier	JK1	JK2	JP10
120MHz	50MHz	2x	2 & 3	2 & 3	1 & 2
133MHz	55MHz	2x	1 & 2	1 & 2	1 & 2
150MHz	60MHz	2x	2 & 3	1 & 2	1 & 2
166MHz	66MHz	2x	1 & 2	2 & 3	1 & 2

Note: Pins designated should be in the closed position.

CPU SPEED SELECTION (INTEL)					
CPU speed	Clock speed	Multiplier	JK1	JK2	JP10
75MHz	50MHz	1.5x	2 & 3	2 & 3	Open
90MHz	60MHz	1.5x	2 & 3	1 & 2	Open
100MHz	66MHz	1.5x	1 & 2	2 & 3	Open
120MHz	60MHz	2x	2 & 3	1 & 2	1 & 2
133MHz	66MHz	2x	1 & 2	2 & 3	1 & 2
150MHz	60MHz	2.5x	2 & 3	1 & 2	1 & 2, 3 & 4
166MHz	66MHz	2.5x	1 & 2	2 & 3	1 & 2, 3 & 4

Note: Pins designated should be in the closed position.

CPU VOLTAGE SELECTION	
Voltage	JP8
VR	Closed
í VRE	Open