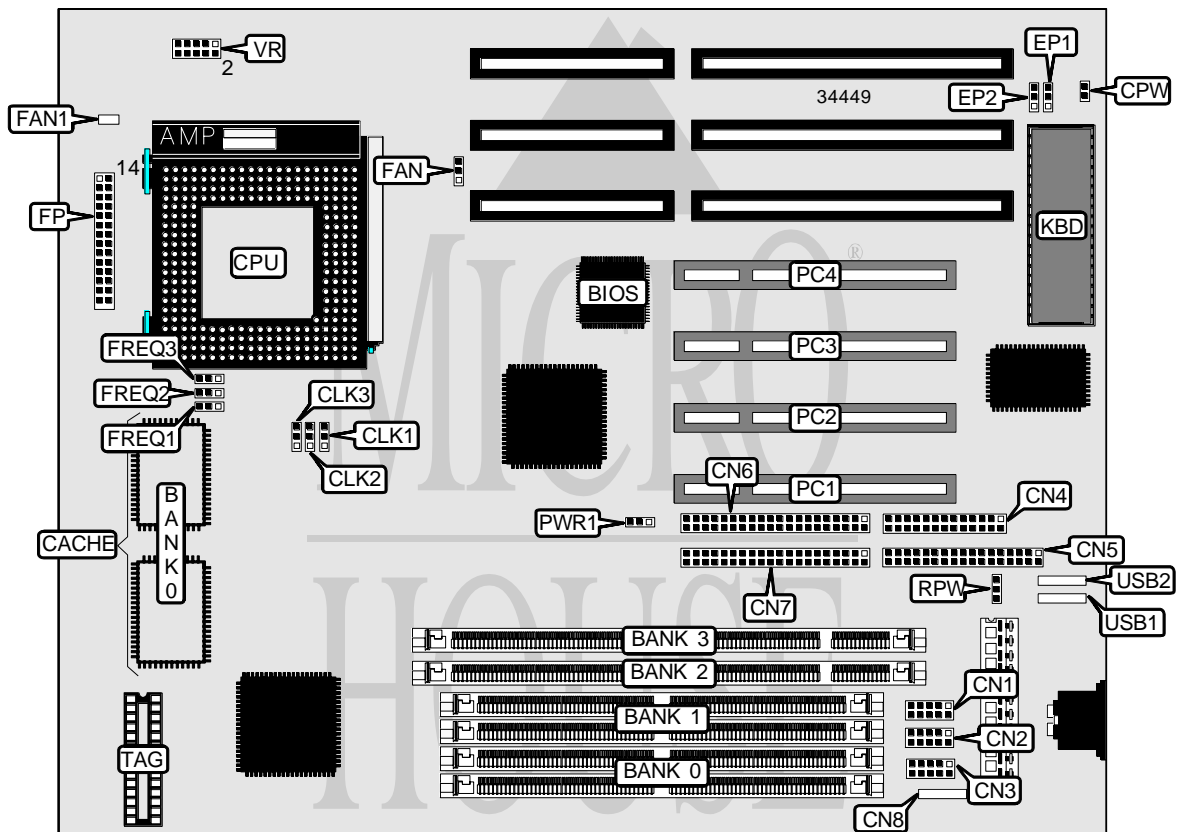


FIRST INTERNATIONAL COMPUTER, INC.

PT - 2007

Processor	CX M1/CX M2/IBM M1/IBM M2/AM K5/AM K6/Pentium
Processor Speed	90/100/120/133/150/166/200/233MHz
Chip Set	Intel
Video Chip Set	None
Maximum Onboard Memory	256MB (EDO supported)
Maximum Video Memory	None
Cache	512KB
BIOS	AMI
Dimensions	254mm x 218mm
I/O Options	32-bit PCI slots (4), floppy drive interface, green PC connector, IDE interfaces (2), parallel port, PS/2 mouse interface, serial ports (2), IR connector, USB connectors (2)
NPU Options	None



Continued on next page . . .

FIRST INTERNATIONAL COMPUTER, INC.

PT - 2007

... continued from previous page

CONNECTIONS			
Purpose	Location	Purpose	Location
Serial port 2	CN1	Turbo LED	FP/pins 7 & 8
Serial port 1	CN2	Green PC connector	FP/pins 10 & 11
IR connector	CN3	Green PC LED	FP/pins 13 & 14
Parallel port	CN4	Speaker	FP/pins 15 - 18
Floppy drive interface	CN5	IDE interface LED	FP/pins 20 & 21
IDE interface 2	CN6	Remote power connector	FP/pins 23 & 24
IDE interface 1	CN7	Reset switch	FP/pins 27 & 28
PS/2 mouse interface	CN8	32-bit PCI slots	PC1 – PC4
CPU fan power	FAN	Remote power connector	RPW
Chassis fan power	FAN1	USB connector 1	USB1
Power LED & keylock	FP/pins 1 - 5	USB connector 2	USB2

USER CONFIGURABLE SETTINGS		
Function	Label	Position
1 Password disabled	CPW	Open
Password enabled	CPW	Closed
1 Power type select AT power	PWR1	Pins 1 & 2 closed
Power type select remote power	PWR1	Pins 2 & 3 closed

DRAM CONFIGURATION		
Size	Bank 0	Bank 1
8MB	(2) 1M x 36	None
16MB	(2) 2M x 36	None
16MB	(2) 1M x 36	(2) 1M x 36
24MB	(2) 2M x 36	(2) 1M x 36
32MB	(2) 4M x 36	None
32MB	(2) 2M x 36	(2) 2M x 36
40MB	(2) 4M x 36	(2) 1M x 36
48MB	(2) 4M x 36	(2) 2M x 36
64MB	(2) 8M x 36	None
64MB	(2) 4M x 36	(2) 4M x 36
72MB	(2) 8M x 36	(2) 1M x 36
80MB	(2) 8M x 36	(2) 2M x 36
96MB	(2) 8M x 36	(2) 4M x 36
128MB	(2) 8M x 36	(2) 8M x 36
128MB	(2) 16M x 36	None
136MB	(2) 16M x 36	(2) 1M x 36
144MB	(2) 16M x 36	(2) 2M x 36
160MB	(2) 16M x 36	(2) 4M x 36
192MB	(2) 16M x 36	(2) 8M x 36
256MB	(2) 16M x 36	(2) 16M x 36

Note: Board accepts EDO memory. Do not install DIMMs & SIMMs at the same time.

Continued on next page...

FIRST INTERNATIONAL COMPUTER, INC.
PT - 2007

... continued from previous page

DIMM CONFIGURATION		
Size	Bank 2	Bank 3
8MB	(1) 1M x 64	None
16MB	(1) 2M x 64	None
16MB	(1) 1M x 64	(1) 1M x 64
24MB	(1) 2M x 64	(1) 1M x 64
32MB	(1) 4M x 64	None
32MB	(1) 2M x 64	(1) 2M x 64
40MB	(1) 4M x 64	(1) 1M x 64
48MB	(1) 4M x 64	(1) 2M x 64
64MB	(1) 8M x 64	None
64MB	(1) 4M x 64	(1) 4M x 64
72MB	(1) 8M x 64	(1) 1M x 64
80MB	(1) 8M x 64	(1) 2M x 64
96MB	(1) 8M x 64	(1) 4M x 64
128MB	(1) 8M x 64	(1) 8M x 64

CACHE CONFIGURATION		
Size	Bank 0	TAG
512KB	(2) 64K x 32	Unidentified

CPU SPEED SELECTION (CX M1 – IMI652)								
CPU speed	Clock speed	Multiplier	CLK1	CLK2	CLK3	FREQ1	FREQ2	FREQ3
133MHz	55MHz	2x	2 & 3	2 & 3	2 & 3	2 & 3	1 & 2	1 & 2
150MHz	60MHz	2x	2 & 3	1 & 2	2 & 3	2 & 3	1 & 2	1 & 2
166MHz	66MHz	2x	1 & 2	1 & 2	2 & 3	2 & 3	1 & 2	1 & 2

Note: Pins designated should be in the closed position.

CPU SPEED SELECTION (CX M1 – ICS 9147)								
CPU speed	Clock speed	Multiplier	CLK1	CLK2	CLK3	FREQ1	FREQ2	FREQ3
133MHz	55MHz	2x	1 & 2	1 & 2	2 & 3	2 & 3	1 & 2	1 & 2
150MHz	60MHz	2x	2 & 3	2 & 3	2 & 3	2 & 3	1 & 2	1 & 2
166MHz	66MHz	2x	1 & 2	2 & 3	2 & 3	2 & 3	1 & 2	1 & 2

Note: Pins designated should be in the closed position.

CPU SPEED SELECTION (CX M2 – IMI652)								
CPU speed	Clock speed	Multiplier	CLK1	CLK2	CLK3	FREQ1	FREQ2	FREQ3
150MHz	60MHz	2.5x	2 & 3	1 & 2	2 & 3	2 & 3	2 & 3	1 & 2
166MHz	66MHz	2.5x	1 & 2	1 & 2	2 & 3	2 & 3	2 & 3	1 & 2
200MHz	66MHz	3x	1 & 2	1 & 2	2 & 3	1 & 2	2 & 3	1 & 2
233MHz	66MHz	3.5x	1 & 2	1 & 2	2 & 3	1 & 2	1 & 2	1 & 2

Note: Pins designated should be in the closed position.

Continued on next page...

FIRST INTERNATIONAL COMPUTER, INC.
PT - 2007

... continued from previous page

CPU SPEED SELECTION (CX M2 – ICS 9147)								
CPU speed	Clock speed	Multiplier	CLK1	CLK2	CLK3	FREQ1	FREQ2	FREQ3
150MHz	60MHz	2.5x	2 & 3	2 & 3	2 & 3	2 & 3	2 & 3	1 & 2
166MHz	66MHz	2.5x	1 & 2	2 & 3	2 & 3	2 & 3	2 & 3	1 & 2
200MHz	66MHz	3x	1 & 2	2 & 3	2 & 3	1 & 2	2 & 3	1 & 2
233MHz	66MHz	3.5x	1 & 2	2 & 3	2 & 3	1 & 2	1 & 2	1 & 2

Note: Pins designated should be in the closed position.

CPU SPEED SELECTION (IBM M1 – IMI652)								
CPU speed	Clock speed	Multiplier	CLK1	CLK2	CLK3	FREQ1	FREQ2	FREQ3
133MHz	55MHz	2x	2 & 3	2 & 3	2 & 3	2 & 3	1 & 2	1 & 2
150MHz	60MHz	2x	2 & 3	1 & 2	2 & 3	2 & 3	1 & 2	1 & 2
166MHz	66MHz	2x	1 & 2	1 & 2	2 & 3	2 & 3	1 & 2	1 & 2

Note: Pins designated should be in the closed position.

CPU SPEED SELECTION (IBM M1 – ICS 9147)								
CPU speed	Clock speed	Multiplier	CLK1	CLK2	CLK3	FREQ1	FREQ2	FREQ3
133MHz	55MHz	2x	1 & 2	1 & 2	2 & 3	2 & 3	1 & 2	1 & 2
150MHz	60MHz	2x	2 & 3	2 & 3	2 & 3	2 & 3	1 & 2	1 & 2
166MHz	66MHz	2x	1 & 2	2 & 3	2 & 3	2 & 3	1 & 2	1 & 2

Note: Pins designated should be in the closed position.

CPU SPEED SELECTION (IBM M2 – IMI652)								
CPU speed	Clock speed	Multiplier	CLK1	CLK2	CLK3	FREQ1	FREQ2	FREQ3
150MHz	60MHz	2.5x	2 & 3	1 & 2	2 & 3	2 & 3	2 & 3	1 & 2
166MHz	66MHz	2.5x	1 & 2	1 & 2	2 & 3	2 & 3	2 & 3	1 & 2
200MHz	66MHz	3x	1 & 2	1 & 2	2 & 3	1 & 2	2 & 3	1 & 2
233MHz	66MHz	3.5x	1 & 2	1 & 2	2 & 3	1 & 2	1 & 2	1 & 2

Note: Pins designated should be in the closed position.

CPU SPEED SELECTION (IBM M2 – ICS 9147)								
CPU speed	Clock speed	Multiplier	CLK1	CLK2	CLK3	FREQ1	FREQ2	FREQ3
150MHz	60MHz	2.5x	2 & 3	2 & 3	2 & 3	2 & 3	2 & 3	1 & 2
166MHz	66MHz	2.5x	1 & 2	2 & 3	2 & 3	2 & 3	2 & 3	1 & 2
200MHz	66MHz	3x	1 & 2	2 & 3	2 & 3	1 & 2	2 & 3	1 & 2
233MHz	66MHz	3.5x	1 & 2	2 & 3	2 & 3	1 & 2	1 & 2	1 & 2

Note: Pins designated should be in the closed position.

Continued on next page. . .

FIRST INTERNATIONAL COMPUTER, INC.
PT - 2007

... continued from previous page

CPU SPEED SELECTION (AM K5 – IMI652)								
CPU speed	Clock speed	Multiplier	CLK1	CLK2	CLK3	FREQ1	FREQ2	FREQ3
90MHz	60MHz	1.5x	2 & 3	1 & 2	2 & 3	1 & 2	1 & 2	1 & 2
100MHz	66MHz	1.5x	1 & 2	1 & 2	2 & 3	1 & 2	1 & 2	1 & 2
120MHz	60MHz	1.5x	2 & 3	1 & 2	2 & 3	1 & 2	1 & 2	1 & 2
133MHz	66MHz	1.5x	1 & 2	1 & 2	2 & 3	1 & 2	1 & 2	1 & 2
150MHz	60MHz	1.75x	2 & 3	1 & 2	2 & 3	2 & 3	2 & 3	1 & 2
166MHz	66MHz	1.75x	1 & 2	1 & 2	2 & 3	2 & 3	2 & 3	1 & 2
200MHz	66MHz	2x	1 & 2	1 & 2	2 & 3	1 & 2	2 & 3	1 & 2

Note: Pins designated should be in the closed position.

CPU SPEED SELECTION (AM K5 – ICS 9147)								
CPU speed	Clock speed	Multiplier	CLK1	CLK2	CLK3	FREQ1	FREQ2	FREQ3
90MHz	60MHz	1.5x	2 & 3	2 & 3	2 & 3	1 & 2	1 & 2	1 & 2
100MHz	66MHz	1.5x	1 & 2	2 & 3	2 & 3	1 & 2	1 & 2	1 & 2
120MHz	60MHz	1.5x	2 & 3	2 & 3	2 & 3	1 & 2	1 & 2	1 & 2
133MHz	66MHz	1.5x	1 & 2	2 & 3	2 & 3	1 & 2	1 & 2	1 & 2
150MHz	60MHz	1.75x	2 & 3	2 & 3	2 & 3	2 & 3	2 & 3	1 & 2
166MHz	66MHz	1.75x	1 & 2	2 & 3	2 & 3	2 & 3	2 & 3	1 & 2
200MHz	66MHz	2x	1 & 2	2 & 3	2 & 3	1 & 2	2 & 3	1 & 2

Note: Pins designated should be in the closed position.

CPU SPEED SELECTION (AM K6 – IMI652)								
CPU speed	Clock speed	Multiplier	CLK1	CLK2	CLK3	FREQ1	FREQ2	FREQ3
166MHz	66MHz	2.5x	1 & 2	1 & 2	2 & 3	2 & 3	2 & 3	1 & 2
200MHz	66MHz	3x	1 & 2	1 & 2	2 & 3	1 & 2	2 & 3	1 & 2
233MHz	66MHz	3.5	1 & 2	1 & 2	2 & 3	1 & 2	1 & 2	1 & 2

Note: Pins designated should be in the closed position.

CPU SPEED SELECTION (AM K6 – ICS 9147)								
CPU speed	Clock speed	Multiplier	CLK1	CLK2	CLK3	FREQ1	FREQ2	FREQ3
166MHz	66MHz	2.5x	1 & 2	2 & 3	2 & 3	2 & 3	2 & 3	1 & 2
200MHz	66MHz	3x	1 & 2	2 & 3	2 & 3	1 & 2	2 & 3	1 & 2
233MHz	66MHz	3.5	1 & 2	2 & 3	2 & 3	1 & 2	1 & 2	1 & 2

Note: Pins designated should be in the closed position.

Continued on next page...

FIRST INTERNATIONAL COMPUTER, INC.
PT-2007

... continued from previous page

CPU SPEED SELECTION (INTEL – IMI652)								
CPU speed	Clock speed	Multiplier	CLK1	CLK2	CLK3	FREQ1	FREQ2	FREQ3
90MHz	60MHz	1.5x	2 & 3	1 & 2	2 & 3	1 & 2	1 & 2	1 & 2
100MHz	66MHz	1.5x	1 & 2	1 & 2	2 & 3	1 & 2	1 & 2	1 & 2
120MHz	60MHz	2x	2 & 3	1 & 2	2 & 3	2 & 3	1 & 2	1 & 2
133MHz	66MHz	2x	1 & 2	1 & 2	2 & 3	2 & 3	1 & 2	1 & 2
150MHz	60MHz	2.5x	2 & 3	1 & 2	2 & 3	2 & 3	2 & 3	1 & 2
166MHz	66MHz	2.5x	1 & 2	1 & 2	2 & 3	2 & 3	2 & 3	1 & 2
200MHz	66MHz	3x	1 & 2	1 & 2	2 & 3	1 & 2	2 & 3	1 & 2
233MHz	66MHz	3.5	1 & 2	1 & 2	2 & 3	1 & 2	1 & 2	1 & 2

Note: Pins designated should be in the closed position.

CPU SPEED SELECTION (INTEL – ICS 9147)								
CPU speed	Clock speed	Multiplier	CLK1	CLK2	CLK3	FREQ1	FREQ2	FREQ3
90MHz	60MHz	1.5x	2 & 3	2 & 3	2 & 3	1 & 2	1 & 2	1 & 2
100MHz	66MHz	1.5x	1 & 2	2 & 3	2 & 3	1 & 2	1 & 2	1 & 2
120MHz	60MHz	2x	2 & 3	2 & 3	2 & 3	2 & 3	1 & 2	1 & 2
133MHz	66MHz	2x	1 & 2	2 & 3	2 & 3	2 & 3	1 & 2	1 & 2
150MHz	60MHz	2.5x	2 & 3	2 & 3	2 & 3	2 & 3	2 & 3	1 & 2
166MHz	66MHz	2.5x	1 & 2	2 & 3	2 & 3	2 & 3	2 & 3	1 & 2
200MHz	66MHz	3x	1 & 2	2 & 3	2 & 3	1 & 2	2 & 3	1 & 2
233MHz	66MHz	3.5	1 & 2	2 & 3	2 & 3	1 & 2	1 & 2	1 & 2

Note: Pins designated should be in the closed position.

CPU VOLTAGE SELECTION (SINGLE)	
Voltage	VR
3.3v	Pins 3 & 4 closed
3.5v	Pins 1 & 2 closed

CPU VOLTAGE SELECTION (DUAL)		
Voltage	V core	VR
3.3v	2.8v	Pins 9 & 10 closed
3.3v	2.9v	Pins 7 & 8 closed
3.3v	3.2v	Pins 5 & 6 closed

FLASH BIOS SELECTION		
Setting	EP1	EP2
AMD 28F020	Pins 1 & 2 closed	Pins 2 & 3 closed
AMTEL AT29C020	Open	Pins 2 & 3 closed
Intel 28F001	Pins 2 & 3 closed	Pins 1 & 2 closed
MXIC MX28F2000	Pins 2 & 3 closed	Pins 2 & 3 closed
SST 29EE010	Open	Pins 2 & 3 closed
SST 29EE020	Open	Pins 2 & 3 closed