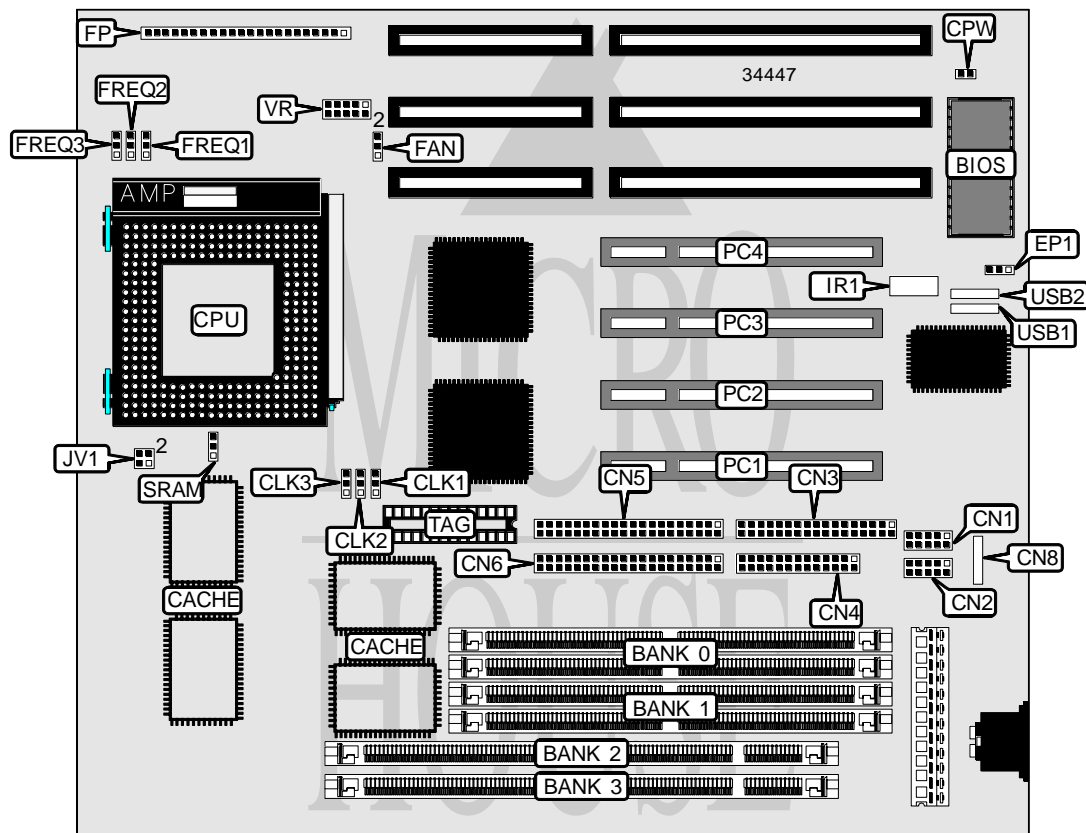


FIRST INTERNATIONAL COMPUTER, INC.

VA-502

Processor	CX M1/CX M2/IBM M1/IBM M2/AM K5/AM K6/Pentium
Processor Speed	90/100/120/133/150/166/180/200/225/233MHz
Chip Set	VIA
Video Chip Set	None
Maximum Onboard Memory	512MB (EDO supported)
Maximum Video Memory	None
Cache	256/512KB
BIOS	Award
Dimensions	330mm x 220mm
I/O Options	32-bit PCI slots (4), floppy drive interface, IDE interfaces (2), parallel port, PS/2 mouse interface, serial ports (2), IR connector, USB connectors (2)
NPU Options	None



Continued on next page . . .

FIRST INTERNATIONAL COMPUTER, INC.

VA-502

... continued from previous page

CONNECTIONS			
Purpose	Location	Purpose	Location
Serial port 1	CN1	Power LED & keylock	FP/pins 1 - 5
Serial port 2	CN2	Speaker	FP/pins 7 - 10
Parallel port	CN3	Reset switch	FP/pins 12 & 13
Floppy drive interface	CN4	Turbo LED	FP/pins 15 & 16
IDE interface 1	CN5	Turbo switch	FP/pins 18 & 19
IDE interface 2	CN6	IDE interface LED	FP/pins 21 & 22
PS/2 mouse interface	CN8	32-bit PCI slots	PC1 - PC4
Chassis fan power	FAN	USB connector 1	USB1
IR connector	IR1	USB connector 2	USB2

USER CONFIGURABLE SETTINGS		
Function	Label	Position
í Password disabled	CPW	Open
Password enabled	CPW	Closed
Flash BIOS voltage select 12v	EP1	Pins 2 & 3 closed
Flash BIOS voltage select 5v	EP1	Pins 1 & 2 closed

DIMM/DRAM CONFIGURATION				
Size	Bank 0	Bank 1	Bank 2	Bank 3
8MB	(2) 1M x 36	None	None	None
8MB	None	None	(1) 1M x 64	None
16MB	(2) 2M x 36	None	None	None
16MB	None	None	(1) 2M x 64	None
16MB	(2) 1M x 36	(2) 1M x 36	None	None
16MB	(2) 1M x 36	None	(1) 1M x 64	None
16MB	None	None	(1) 1M x 64	(1) 1M x 64
24MB	None	(2) 2M x 36	(1) 1M x 64	None
32MB	(2) 4M x 36	None	None	None
32MB	(2) 2M x 36	(2) 2M x 36	None	None
32MB	None	None	(1) 4M x 64	None
32MB	(2) 2M x 36	None	(1) 2M x 64	None
40MB	(2) 4M x 36	(2) 1M x 36	None	None
40MB	(2) 4M x 36	None	(1) 1M x 64	None
48MB	(2) 2M x 36	None	(1) 4M x 64	None
48MB	(2) 4M x 36	(2) 2M x 36	None	None
64MB	(2) 8M x 36	None	None	None
64MB	None	None	None	(1) 8M x 64
64MB	(2) 4M x 36	(2) 4M x 36	None	None
64MB	(2) 4M x 36	None	(1) 4M x 64	None
72MB	(2) 8M x 36	(2) 1M x 36	None	None
72MB	(2) 8M x 36	None	(1) 1M x 64	None
80MB	(2) 2M x 36	None	(1) 8M x 64	None

Continued on next page...

FIRST INTERNATIONAL COMPUTER, INC.
VA-502

... continued from previous page

DIMM/DRAM CONFIGURATION (CON'T)				
Size	Bank 0	Bank 1	Bank 2	Bank 3
80MB	(2) 8M x 36	(2) 2M x 36	None	None
96MB	(2) 4M x 36	None	(1) 8M x 64	None
96MB	(2) 8M x 36	(2) 4M x 36	None	None
128MB	(2) 8M x 36	(2) 8M x 36	None	None
128MB	(2) 8M x 36	None	(1) 8M x 64	None
256MB	(2) 32M x 36	None	None	None
264MB	(2) 32M x 36	(2) 1M x 36	None	None
272MB	(2) 32M x 36	(2) 2M x 36	None	None
288MB	(2) 32M x 36	(2) 4M x 36	None	None
320MB	(2) 32M x 36	(2) 8M x 36	None	None
384MB	(2) 32M x 36	(2) 16M x 36	None	None
512MB	(2) 32M x 36	(2) 32M x 36	None	None

Note: Board accepts EDO memory.

CACHE CONFIGURATION
Note: 512KB cache is factory installed and is not configurable. 256KB cache is available as an option from First International Computer, Inc.

CACHE JUMPER CONFIGURATION	
Type	SRAM
í Intel burst	Pins 1 & 2 closed
Linear burst	Pins 2 & 3 closed

CPU SPEED SELECTION (CX M1)								
CPU speed	Clock speed	Multiplier	CLK1	CLK2	CLK3	FREQ1	FREQ2	FREQ3
133MHz	55MHz	2x	2 & 3	2 & 3	1 & 2	2 & 3	1 & 2	1 & 2
150MHz	60MHz	2x	2 & 3	1 & 2	1 & 2	2 & 3	1 & 2	1 & 2
166MHz	66MHz	2x	1 & 2	1 & 2	1 & 2	2 & 3	1 & 2	1 & 2
200MHz	75MHz	2x	1 & 2	2 & 3	2 & 3	2 & 3	1 & 2	1 & 2

Note: Pins designated should be in the closed position.

CPU SPEED SELECTION (CX M2)								
CPU speed	Clock speed	Multiplier	CLK1	CLK2	CLK3	FREQ1	FREQ2	FREQ3
150MHz	60MHz	2.5x	2 & 3	1 & 2	1 & 2	2 & 3	2 & 3	1 & 2
166MHz	66MHz	2.5x	1 & 2	1 & 2	1 & 2	2 & 3	2 & 3	1 & 2
180MHz	75MHz	2.5x	1 & 2	2 & 3	2 & 3	2 & 3	2 & 3	1 & 2
200MHz	66MHz	3x	1 & 2	1 & 2	1 & 2	1 & 2	2 & 3	1 & 2
225MHz	75MHz	3x	1 & 2	2 & 3	2 & 3	1 & 2	2 & 3	1 & 2
233MHz	66MHz	3.5x	1 & 2	1 & 2	1 & 2	1 & 2	1 & 2	1 & 2

Note: Pins designated should be in the closed position.

Continued on next page...

FIRST INTERNATIONAL COMPUTER, INC.

VA-502

... continued from previous page

CPU SPEED SELECTION (IBM M1)								
CPU speed	Clock speed	Multiplier	CLK1	CLK2	CLK3	FREQ1	FREQ2	FREQ3
133MHz	55MHz	2x	2 & 3	2 & 3	1 & 2	2 & 3	1 & 2	1 & 2
150MHz	60MHz	2x	2 & 3	1 & 2	1 & 2	2 & 3	1 & 2	1 & 2
166MHz	66MHz	2x	1 & 2	1 & 2	1 & 2	2 & 3	1 & 2	1 & 2
200MHz	75MHz	2x	1 & 2	2 & 3	2 & 3	2 & 3	1 & 2	1 & 2

Note: Pins designated should be in the closed position.

CPU SPEED SELECTION (IBM M2)								
CPU speed	Clock speed	Multiplier	CLK1	CLK2	CLK3	FREQ1	FREQ2	FREQ3
150MHz	60MHz	2.5x	2 & 3	1 & 2	1 & 2	2 & 3	2 & 3	1 & 2
166MHz	66MHz	2.5x	1 & 2	1 & 2	1 & 2	2 & 3	2 & 3	1 & 2
180MHz	75MHz	2.5x	1 & 2	2 & 3	2 & 3	2 & 3	2 & 3	1 & 2
200MHz	66MHz	3x	1 & 2	1 & 2	1 & 2	1 & 2	2 & 3	1 & 2
225MHz	75MHz	3x	1 & 2	2 & 3	2 & 3	1 & 2	2 & 3	1 & 2
233MHz	66MHz	3.5x	1 & 2	1 & 2	1 & 2	1 & 2	1 & 2	1 & 2

Note: Pins designated should be in the closed position.

CPU SPEED SELECTION (AM K5)								
CPU speed	Clock speed	Multiplier	CLK1	CLK2	CLK3	FREQ1	FREQ2	FREQ3
90MHz	60MHz	1.5x	2 & 3	1 & 2	1 & 2	1 & 2	1 & 2	1 & 2
100MHz	66MHz	1.5x	1 & 2	1 & 2	1 & 2	1 & 2	1 & 2	1 & 2
120MHz	60MHz	1.5x	2 & 3	1 & 2	1 & 2	1 & 2	1 & 2	1 & 2
133MHz	66MHz	1.5x	1 & 2	1 & 2	1 & 2	1 & 2	1 & 2	1 & 2
150MHz	60MHz	1.75x	2 & 3	1 & 2	1 & 2	2 & 3	2 & 3	1 & 2
166MHz	66MHz	1.75x	1 & 2	1 & 2	1 & 2	2 & 3	2 & 3	1 & 2
200MHz	66MHz	2x	1 & 2	1 & 2	1 & 2	1 & 2	2 & 3	1 & 2

Note: Pins designated should be in the closed position.

CPU SPEED SELECTION (AM K6)								
CPU speed	Clock speed	Multiplier	CLK1	CLK2	CLK3	FREQ1	FREQ2	FREQ3
166MHz	66MHz	2.5x	1 & 2	1 & 2	1 & 2	2 & 3	2 & 3	1 & 2
200MHz	66MHz	3x	1 & 2	1 & 2	1 & 2	1 & 2	2 & 3	1 & 2
233MHz	66MHz	3.5	1 & 2	1 & 2	1 & 2	1 & 2	1 & 2	1 & 2

Note: Pins designated should be in the closed position.

Continued on next page...

FIRST INTERNATIONAL COMPUTER, INC.
VA-502

... continued from previous page

CPU SPEED SELECTION (INTEL)								
CPU speed	Clock speed	Multiplier	CLK1	CLK2	CLK3	FREQ1	FREQ2	FREQ3
90MHz	60MHz	1.5x	2 & 3	1 & 2	1 & 2	1 & 2	1 & 2	1 & 2
100MHz	66MHz	1.5x	1 & 2	1 & 2	1 & 2	1 & 2	1 & 2	1 & 2
120MHz	60MHz	2x	2 & 3	1 & 2	1 & 2	2 & 3	1 & 2	1 & 2
133MHz	66MHz	2x	1 & 2	1 & 2	1 & 2	2 & 3	1 & 2	1 & 2
150MHz	60MHz	2.5x	2 & 3	1 & 2	1 & 2	2 & 3	2 & 3	1 & 2
166MHz	66MHz	2.5x	1 & 2	1 & 2	1 & 2	2 & 3	2 & 3	1 & 2
200MHz	66MHz	3x	1 & 2	1 & 2	1 & 2	1 & 2	2 & 3	1 & 2
233MHz	66MHz	3.5	1 & 2	1 & 2	1 & 2	1 & 2	1 & 2	1 & 2

Note: Pins designated should be in the closed position.

CPU VOLTAGE SELECTION (SINGLE)		
Voltage	JV1	VR
3.3v	Open	Pins 3 & 4 closed
3.5v	Open	Pins 1 & 2 closed

CPU VOLTAGE SELECTION			
Voltage	V core	JV1	VR
3.3v	2.8v	Pins 1 & 2, 3 & 4 closed	Pins 9 & 10 closed
3.3v	2.9v	Pins 1 & 2, 3 & 4 closed	Pins 7 & 8 closed
3.3v	3.2v	Pins 1 & 2, 3 & 4 closed	Pins 5 & 6 closed