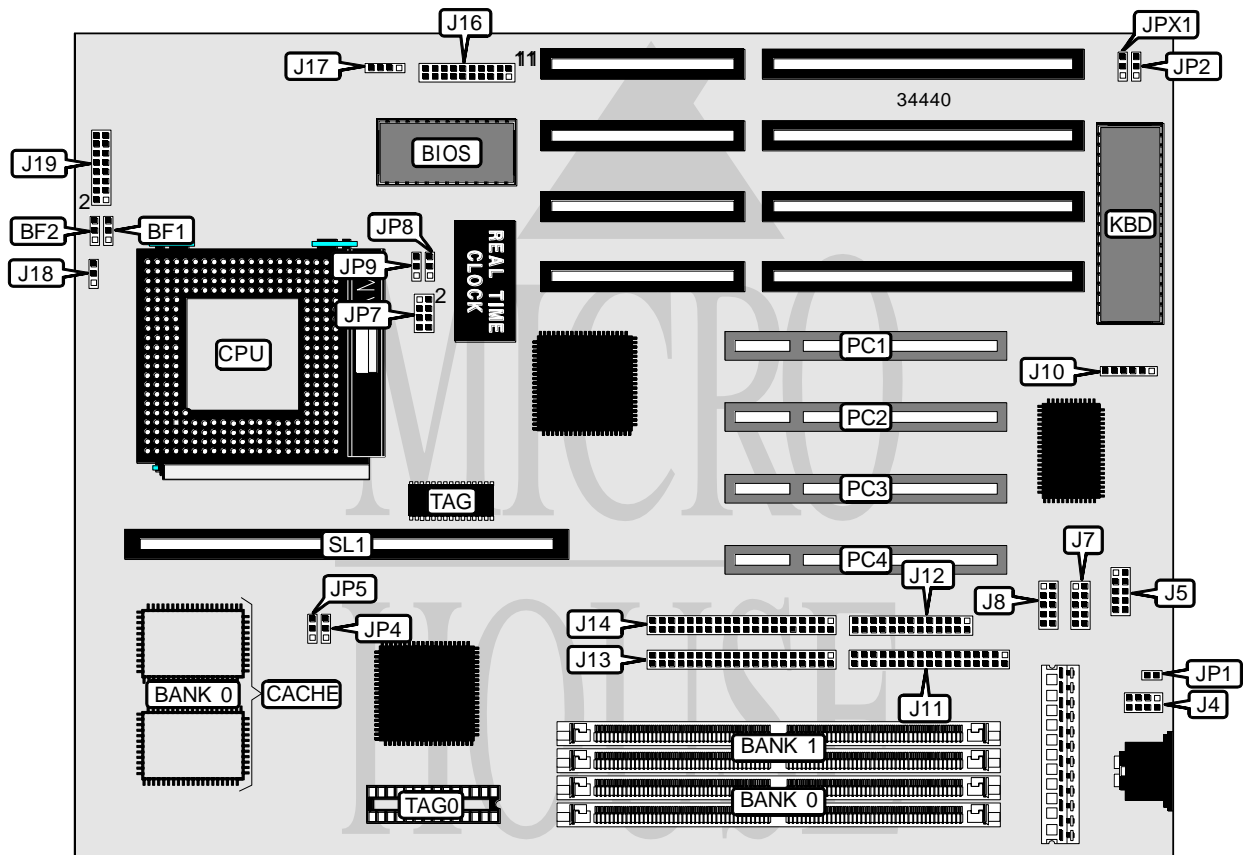


CHAINTECH COMPUTER COMPANY, LTD.

5 I F M 1. 2

Processor	CX M1/AM K5/Pentium
Processor Speed	75/90/100/120/133/150/166/180/200MHz
Chip Set	Intel
Video Chip Set	None
Maximum Onboard Memory	256MB (EDO supported)
Maximum Video Memory	None
Cache	256/512KB
BIOS	Award
Dimensions	280mm x 220mm
I/O Options	32-bit PCI slots (4), floppy drive interface, green PC connector, IDE interfaces (2), parallel port, PS/2 mouse interface, serial ports (2), cache slot, IR connector, USB connector
NPU Options	None



CHAINTECH COMPUTER COMPANY, LTD.

5 I F M 1 . 2

... continued from previous page

CONNECTIONS			
Purpose	Location	Purpose	Location
PS/2 mouse interface	J4	Speaker	J16/pins 7 - 10
USB connector	J5	Turbo LED	J16/pins 11 & 12
Serial port 2	J7	Green PC connector	J16/pins 14 & 15
Serial port 1	J8	Green PC LED	J16/pins 16 & 17
IR connector	J10	Reset switch	J16/pins 19 & 20
Floppy drive interface	J11	IDE interface LED 1	J17/pins 1 & 2
Parallel port	J12	IDE interface LED 2	J17/pins 3 & 4
IDE interface 1	J13	Chassis fan power	J18
IDE interface 2	J14	32-bit PCI slots	PC1 – PC4
Power LED & keylock	J16/pins 1 - 5	Cache slot	SL1

USER CONFIGURABLE SETTINGS		
Function	Label	Position
í Keyboard grounding EMI radiation increased	JP1	Closed
Keyboard grounding EMI radiation decreased	JP1	Open
í PS/2 mouse enabled	JP2	Pins 1 & 2 closed
PS/2 mouse disabled	JP2	Pins 2 & 3 closed
í Password enabled	JPX1	Pins 1 & 2 closed
Password disabled	JPX1	Pins 2 & 3 closed

DRAM CONFIGURATION		
Size	Bank 0	Bank 1
8MB	(2) 1M x 36	None
16MB	(2) 2M x 36	None
16MB	(2) 1M x 36	(2) 1M x 36
24MB	(2) 2M x 36	(2) 1M x 36
32MB	(2) 4M x 36	None
32MB	(2) 2M x 36	(2) 2M x 36
40MB	(2) 4M x 36	(2) 1M x 36
48MB	(2) 4M x 36	(2) 2M x 36
64MB	(2) 8M x 36	None
64MB	(2) 4M x 36	(2) 4M x 36
72MB	(2) 8M x 36	(2) 1M x 36
80MB	(2) 8M x 36	(2) 2M x 36
96MB	(2) 8M x 36	(2) 4M x 36
128MB	(2) 8M x 36	(2) 8M x 36
128MB	(2) 16M x 36	None
136MB	(2) 16M x 36	(2) 1M x 36
144MB	(2) 16M x 36	(2) 2M x 36
160MB	(2) 16M x 36	(2) 4M x 36
192MB	(2) 16M x 36	(2) 8M x 36
256MB	(2) 16M x 36	(2) 16M x 36

Note: Board accepts EDO memory. Banks are interchangeable.

Continued on next page...

CHAINTECH COMPUTER COMPANY, LTD.

5 I F M 1 . 2

... continued from previous page

CACHE CONFIGURATION				
Size	Bank 0	SL1	TAG	TAG 0
256KB	(2) 32K x 32	Not installed	Unidentified	(1) 16K/32K x 8
512KB	(2) 32K x 32	256KB module installed	Unidentified	(1) 16K/32K x 8

CACHE JUMPER CONFIGURATION		
Size	JP4	JP5
256KB	Pins 1 & 2 closed	Pins 1 & 2 closed
512KB	Pins 2 & 3 closed	Pins 2 & 3 closed

CPU SPEED SELECTION (CYRIX)						
CPU speed	Clock speed	Multiplier	BF1	BF2	JP8	JP9
120MHz	50MHz	2x	2 & 3	1 & 2	1 & 2	1 & 2
133MHz	55MHz	2x	2 & 3	1 & 2	2 & 3	2 & 3
150MHz	60MHz	2x	2 & 3	1 & 2	2 & 3	1 & 2
166MHz	66MHz	2x	2 & 3	1 & 2	1 & 2	2 & 3

Note: Pins designated should be in the closed position.

CPU SPEED SELECTION (AMD)						
CPU speed	Clock speed	Multiplier	BF1	BF2	JP8	JP9
75MHz	50MHz	1.5x	1 & 2	1 & 2	1 & 2	1 & 2
90MHz	60MHz	1.5x	1 & 2	1 & 2	2 & 3	1 & 2
100MHz	66MHz	1.5x	1 & 2	1 & 2	1 & 2	2 & 3

Note: Pins designated should be in the closed position.

CPU SPEED SELECTION (INTEL)						
CPU speed	Clock speed	Multiplier	BF1	BF2	JP8	JP9
75MHz	50MHz	1.5x	1 & 2	1 & 2	1 & 2	1 & 2
90MHz	60MHz	1.5x	1 & 2	1 & 2	2 & 3	1 & 2
100MHz	66MHz	1.5x	1 & 2	1 & 2	1 & 2	2 & 3
120MHz	60MHz	2x	2 & 3	1 & 2	2 & 3	1 & 2
133MHz	66MHz	2x	2 & 3	1 & 2	1 & 2	2 & 3
150MHz	60MHz	2.5x	2 & 3	2 & 3	2 & 3	1 & 2
166MHz	66MHz	2.5x	2 & 3	2 & 3	1 & 2	2 & 3
180MHz	60MHz	3x	1 & 2	2 & 3	2 & 3	1 & 2
200MHz	66MHz	3x	1 & 2	2 & 3	1 & 2	2 & 3

Note: Pins designated should be in the closed position.

CPU VOLTAGE SELECTION (SINGLE)		
Voltage	JP7	JP19
3.3v	1 & 2, 3 & 4, 5 & 6, 7 & 8	1 & 2, 5 & 6
3.5v	1 & 2, 3 & 4, 5 & 6, 7 & 8	3 & 4, 5 & 6

Note: Pins designated should be in the closed position.

Continued on next page...

CHAINTECH COMPUTER COMPANY, LTD.
5 I F M 1 . 2

... continued from previous page

CPU VOLTAGE SELECTION (DUAL)			
Voltage	V core	JP7	J19
3.3v	2.5v	Open	1 & 2, 7 & 8, 15 & 16
3.3v	2.7v	Open	1 & 2, 9 & 10, 15 & 16
3.3v	2.8v	Open	1 & 2, 11 & 12, 15 & 16
3.3v	2.9v	Open	1 & 2, 13 & 14, 15 & 16
3.5v	2.5v	Open	3 & 4, 7 & 8, 15 & 16
3.5v	2.7v	Open	3 & 4, 9 & 10, 15 & 16
3.5v	2.8v	Open	3 & 4, 11 & 12, 15 & 16
3.5v	2.9v	Open	3 & 4, 13 & 14, 15 & 16

Note: Pins designated should be in the closed position.