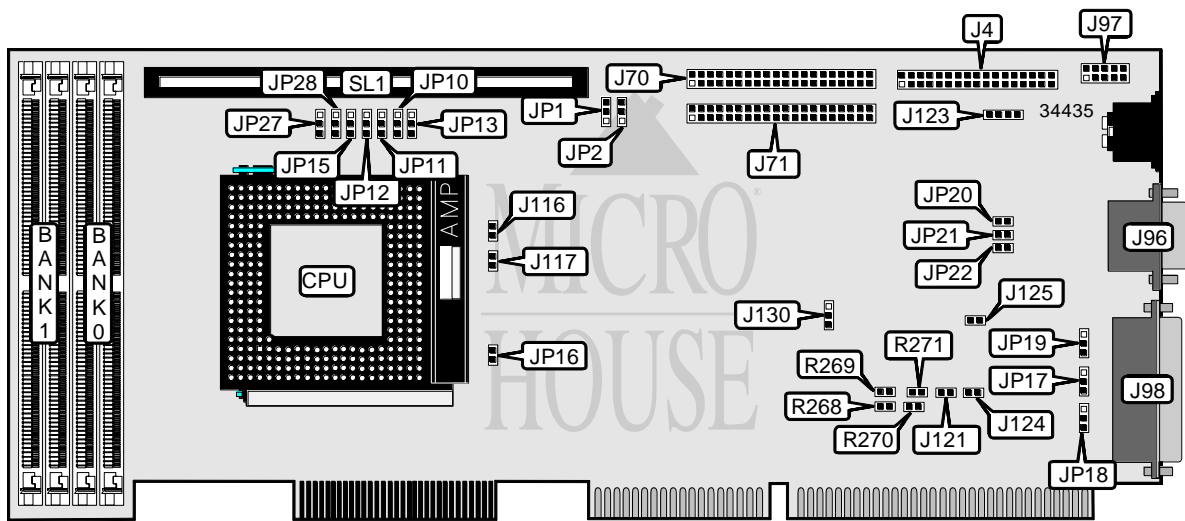


CSS LABORATORIES, INC.

MS - 5 8 6 1

Processor	Pentium
Processor Speed	75/90/100/120/133/150/166MHz
Chip Set	Intel
Video Chip Set	None
Maximum Onboard Memory	128MB (EDO supported)
Maximum Video Memory	None
Cache	256/512KB
BIOS	Award
Dimensions	Unidentified
I/O Options	Floppy drive interface, IDE interfaces (2), parallel port, serial ports (2), cache slot
NPU Options	None



CONNECTIONS			
Purpose	Location	Purpose	Location
Floppy drive interface	J4	Serial port 1	J97
IDE interface 1	J70	Parallel port	J98
IDE interface 2	J71	External battery	J123
Serial port 2	J96	Cache slot	SL1

Continued on next page. . .

... continued from previous page

USER CONFIGURABLE SETTINGS		
Function	Label	Position
í Factory configured - do not alter	J16	Unidentified
í Factory configured - do not alter	J116	Unidentified
í Factory configured - do not alter	J117	Unidentified
í Factory configured - do not alter	J121	Unidentified
Watchdog reset enabled	J124	Closed
Watchdog reset disabled	J124	Open
Watchdog IRQ15 enabled	J125	Closed
Watchdog IRQ15 disabled	J125	Open
í ISA bus speed/ clock select /3, 8MHz	J130	Pins 1 & 2 closed
ISA bus speed/ clock select /4, 6MHz	J130	Pins 2 & 3 closed
í Factory configured - do not alter	JP10	Unidentified
í Factory configured - do not alter	JP11	Unidentified
í Factory configured - do not alter	JP12	Unidentified
í Factory configured - do not alter	JP13	Unidentified
í Factory configured - do not alter	JP20	Unidentified
í Factory configured - do not alter	JP21	Unidentified
í Factory configured - do not alter	JP22	Unidentified
í Factory configured - do not alter	JP27	Unidentified

DRAM CONFIGURATION		
Size	Bank 0	Bank 1
8MB	(2) 1M x 32	None
16MB	(2) 2M x 32	None
16MB	(2) 1M x 32	(2) 1M x 32
24MB	(2) 2M x 32	(2) 1M x 32
32MB	(2) 4M x 32	None
32MB	(2) 2M x 32	(2) 2M x 32
40MB	(2) 4M x 32	(2) 1M x 32
48MB	(2) 4M x 32	(2) 2M x 32
64MB	(2) 8M x 32	None
64MB	(2) 4M x 32	(2) 4M x 32
80MB	(2) 8M x 32	(2) 2M x 32
96MB	(2) 8M x 32	(2) 4M x 32
128MB	(2) 16M x 32	None
128MB	(2) 8M x 32	(2) 8M x 32

CACHE CONFIGURATION	
Size	SL1
256KB	256KB module installed
512KB	512KB module installed

Continued on next page. . .

CSS LABORATORIES, INC.
MS - 5 8 6 1

... continued from previous page

CPU SPEED SELECTION						
CPU speed	Clock speed	Multiplier	JP1	JP2	JP15	JP28
75MHz	50MHz	1.5x	2 & 3	2 & 3	Open	Open
90MHz	60MHz	1.5x	1 & 2	2 & 3	Open	Open
100MHz	66MHz	1.5x	2 & 3	1 & 2	Open	Open
120MHz	60MHz	2x	1 & 2	2 & 3	2 & 3	Open
133MHz	66MHz	2x	2 & 3	1 & 2	2 & 3	Open
150MHz	60MHz	2.5x	1 & 2	2 & 3	2 & 3	2 & 3
166MHz	66MHz	2.5x	2 & 3	1 & 2	2 & 3	2 & 3

Note: Pins designated should be in the closed position.

FLASH BIOS SELECTION			
Setting	JP17	JP18	JP19
EPROM	Pins 1 & 2 closed	Pins 1 & 2 closed	Pins 2 & 3 closed
Flash	Pins 1 & 2 closed	Pins 1 & 2 closed	Pins 1 & 2 closed

WATCHDOG TIMER SELECTION				
Setting	R268	R269	R270	R271
Disabled	Open	Closed	Open	Closed
Enabled	Closed	Open	Closed	Open