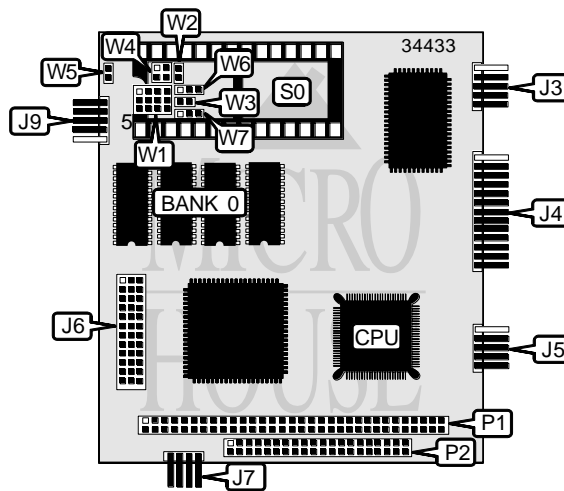


AMPRO COMPUTERS, INC.

COREMODULE/486-11

Processor	80486SLC-2
Processor Speed	50MHz
Chip Set	Headland
Video Chip Set	None
Maximum Onboard Memory	16MB
Maximum Video Memory	None
Cache	None
BIOS	Unidentified
Dimensions	96mm x 90mm
I/O Options	Parallel port, serial ports (2), utility connector, PC/104 connectors (2)
NPU Options	80387SX



CONNECTIONS			
Purpose	Location	Purpose	Location
Serial port 1	J3	Power connector	J7
Parallel port	J4	Serial port 2	J9
Utility connector	J5	PC/104 connector	P1
NPU connector	J6	PC/104 connector	P2

Continued on next page. . .

AMPRO COMPUTERS, INC.
COREMODULE/486-II

... continued from previous page

USER CONFIGURABLE SETTINGS		
Function	Label	Position
í Factory configured - do not alter	W4	Unidentified
í Factory configured - do not alter	W5	Unidentified
í Factory configured - do not alter	W6	Unidentified

DRAM CONFIGURATION	
Size	Bank 0
4MB	4MB
8MB	8MB
16MB	16MB

Note: Board is factory installed with one of the above sizes. It is non-configurable.

SOCKET S0 SELECTION		
Type	W1	W2
27C64	6 & 7, 8 & 12	Open
27C128	6 & 7, 8 & 12	Open
28C64	6 & 7, 8 & 12	Open
27011	6 & 7, 8 & 12	Open
27513	6 & 7, 8 & 12	Open
27C256	6 & 10, 7 & 11, 8 & 12	Open
27C512	9 & 10, 7 & 11, 8 & 12	Open
27C010	2 & 3, 5 & 6, 7 & 11, 9 & 10	Open
27C020	2 & 3, 4 & 8, 5 & 6, 7 & 11, 9 & 10	Open
27C040	1 & 5, 2 & 3, 4 & 8, 7 & 11, 9 & 10	Open
27C080	1 & 5, 4 & 8, 7 & 11, 9 & 10	Closed
29C256	6 & 10, 7 & 11, 8 & 12	Open
28C256	6 & 7, 8 & 12, 10 & 11	Open
Seeq 27F010	2 & 3, 5 & 6, 7 & 11, 9 & 10	Open
28F010	2 & 3, 5 & 6, 7 & 11, 9 & 10	Open
28F512	2 & 3, 5 & 6, 7 & 11, 9 & 10	Open
Seeq 48F010	2 & 3, 5 & 6, 7 & 11, 9 & 10	Open
Seeq 48F512	2 & 3, 5 & 6, 7 & 11, 9 & 10	Open
Toshiba 58F1000	2 & 3, 5 & 6, 7 & 11, 9 & 10	Open
28F010	2 & 3, 4 & 8, 5 & 6, 7 & 11, 9 & 10	Open
Dallas DS1217	6 & 10, 7 & 11, 8 & 12	Open
Dallas DS1235	6 & 10, 7 & 11, 8 & 12	Open
62256	6 & 10, 7 & 11, 8 & 12	Open
32K SRAM	6 & 10, 7 & 11, 8 & 12	Open
Dallas DS1245	5 & 9, 6 & 7, 8 & 12, 10 & 11	Open
62128	5 & 9, 6 & 7, 8 & 12, 10 & 11	Open
128KB SRAM	5 & 9, 6 & 7, 8 & 12, 10 & 11	Open
512KB SRAM	1 & 2, 4 & 8, 5 & 9, 6 & 7, 10 & 11	Open

Note: Pins designated should be in the closed position.

Continued on next page...

AMPRO COMPUTERS, INC.
COREMODULE/486-II

... continued from previous page

SOCKET S0 SELECTION (CON'T)		
Type	W3	W7
27C64	Open	Pins 1 & 2 closed
27C128	Open	Pins 1 & 2 closed
28C64	Open	Pins 1 & 2 closed
27011	Open	Pins 1 & 2 closed
27513	Open	Pins 1 & 2 closed
27C256	Open	Pins 1 & 2 closed
27C512	Open	Pins 1 & 2 closed
27C010	Open	Pins 1 & 2 closed
27C020	Open	Pins 1 & 2 closed
27C040	Open	Pins 1 & 2 closed
27C080	Open	Pins 1 & 2 closed
29C256	Open	Pins 1 & 2 closed
28C256	Open	Pins 1 & 2 closed
Seeq 27F010	Open	Pins 1 & 2 closed
28F010	Open	Pins 1 & 2 closed
28F512	Open	Pins 1 & 2 closed
Seeq 48F010	Open	Pins 1 & 2 closed
Seeq 48F512	Open	Pins 1 & 2 closed
Toshiba 58F1000	Open	Pins 1 & 2 closed
28F010	Open	Pins 1 & 2 closed
Dallas DS1217	Open	Pins 1 & 2 closed
Dallas DS1235	Open	Pins 1 & 2 closed
62256	Open	Pins 1 & 2 closed
32K SRAM	Open	Pins 1 & 2 closed
Dallas DS1245	Open	Pins 1 & 2 closed
62128	Open	Pins 1 & 2 closed
128KB SRAM	Open	Pins 1 & 2 closed
512KB SRAM	Open	Pins 1 & 2 closed