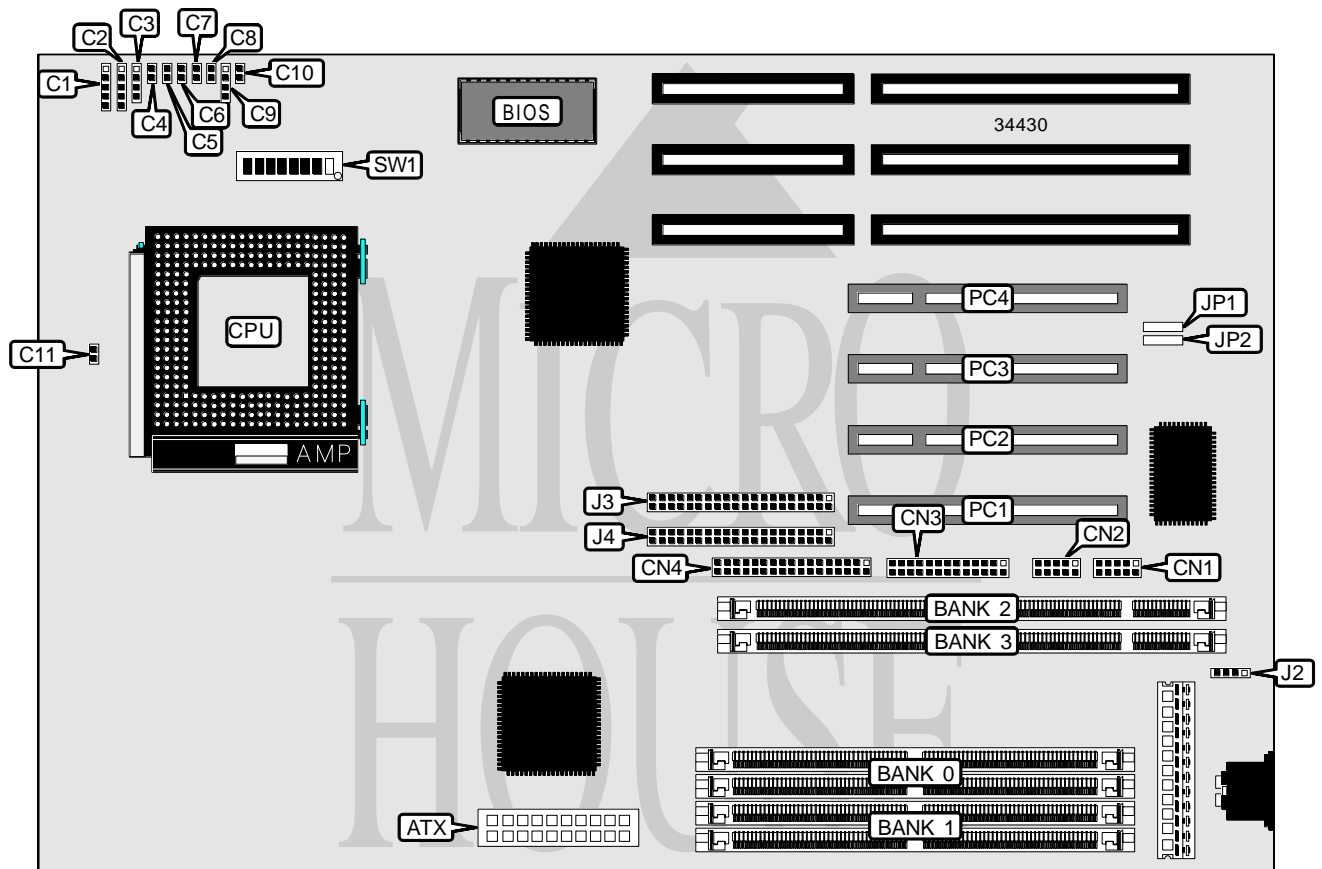


MAGITRONICS

A - P 5 9 7 J T

Processor	CX M1/CX M2/IBM M1/IBM M2/AM K5/AM K6/Pentium
Processor Speed	90/100/120/133/150/166/180/200/233MHz
Chip Set	Intel
Video Chip Set	None
Maximum Onboard Memory	256MB (EDO supported)
Maximum Video Memory	None
Cache	512KB
BIOS	Award
Dimensions	330mm x 220mm
I/O Options	32-bit PCI slots (4), floppy drive interface, green PC connector, IDE interfaces (2), parallel port, PS/2 mouse interface, serial ports (2), IR connector, USB connectors (2), ATX power connector
NPU Options	None



Continued on next page. . .

MAGITRONICS
A - P 5 9 7 J T

... continued from previous page

CONNECTIONS			
Purpose	Location	Purpose	Location
ATX power connector	ATX	Chassis fan power	C11
IR connector	C1	Serial port 1	CN1
Power LED & keylock	C2	Serial port 2	CN2
Speaker	C3	Parallel port	CN3
Turbo LED	C4	Floppy drive interface	CN4
Turbo switch	C5	PS/2 mouse interface	J2
Reset switch	C6	IDE interface 1	J3
Green PC LED	C7	IDE interface 2	J4
Green PC connector	C8	USB connector	JP1
IDE interface LED	C9	USB connector	JP2
Soft off power supply	C10	32-bit PCI slots	PC1 – PC4

DIMM/DRAM CONFIGURATION				
Size	Bank 0	Bank 1	Bank 2	Bank 3
8MB	(2) 1M x 36	None	None	None
8MB	None	None	(1) 1M x 64	None
16MB	(2) 2M x 36	None	None	None
16MB	None	None	(1) 2M x 64	None
16MB	None	None	(1) 1M x 64	(1) 1M x 64
16MB	(2) 1M x 36	(2) 1M x 36	None	None
16MB	(2) 1M x 36	None	(1) 1M x 64	None
24MB	(2) 1M x 36	None	(1) 2M x 64	None
24MB	(2) 2M x 36	None	(1) 1M x 64	None
24MB	(2) 1M x 36	(2) 2M x 36	None	None
24MB	None	None	(1) 1M x 64	(1) 2M x 64
24MB	(2) 1M x 36	None	(1) 1M x 64	(1) 1M x 64
32MB	None	None	(1) 2M x 64	(1) 2M x 64
32MB	(2) 1M x 36	None	(1) 1M x 64	(1) 2M x 64
32MB	(2) 2M x 36	None	(1) 1M x 64	(1) 1M x 64
32MB	(2) 4M x 36	None	None	None
32MB	None	None	(1) 4M x 64	None
32MB	(2) 2M x 36	(2) 2M x 36	None	None
32MB	(2) 2M x 36	None	(1) 2M x 64	None
40MB	(2) 1M x 36	None	(1) 4M x 64	None
40MB	(2) 1M x 36	(2) 4M x 36	None	None
40MB	(2) 1M x 36	None	(1) 2M x 64	(1) 2M x 64
40MB	(2) 2M x 36	None	(1) 1M x 64	(1) 2M x 64
40MB	None	None	(1) 1M x 64	(1) 4M x 64
40MB	(2) 4M x 36	None	(1) 1M x 64	None
48MB	None	None	(1) 2M x 64	(1) 4M x 64
48MB	(2) 1M x 36	None	(1) 1M x 64	(1) 4M x 64
48MB	(2) 2M x 36	None	(1) 2M x 64	(1) 2M x 64

Continued on next page...

MAGITRONICS
A - P 5 9 7 J T

... continued from previous page

DIMM/DRAM CONFIGURATION (CON'T)				
Size	Bank 0	Bank 1	Bank 2	Bank 3
48MB	(2) 4M x 36	None	(1) 1M x 64	(1) 1M x 64
48MB	(2) 2M x 36	(2) 4M x 36	None	None
48MB	(2) 2M x 36	None	(1) 4M x 64	None
48MB	(2) 4M x 36	None	(1) 2M x 64	None
56MB	(2) 1M x 36	None	(1) 2M x 64	(1) 4M x 64
56MB	(2) 2M x 36	None	(1) 1M x 64	(1) 4M x 64
56MB	(2) 4M x 36	None	(1) 1M x 64	(1) 2M x 64
64MB	None	None	(1) 4M x 64	(1) 4M x 64
64MB	(2) 2M x 36	None	(1) 2M x 64	(1) 4M x 64
64MB	(2) 4M x 36	None	(1) 2M x 64	(1) 2M x 64
64MB	(2) 8M x 36	None	None	None
64MB	None	None	(1) 8M x 64	None
64MB	(2) 4M x 36	(2) 4M x 36	None	None
64MB	(2) 4M x 36	None	(1) 4M x 64	None
72MB	(2) 1M x 36	(2) 8M x 36	None	None
72MB	(2) 8M x 36	None	(1) 1M x 64	None
72MB	(2) 1M x 36	None	(1) 4M x 64	(1) 4M x 64
72MB	(2) 4M x 36	None	(1) 1M x 64	(1) 4M x 64
72MB	None	None	(1) 1M x 64	(1) 8M x 64
80MB	None	None	(1) 2M x 64	(1) 8M x 64
80MB	(2) 2M x 36	None	(1) 4M x 64	(1) 4M x 64
80MB	(2) 4M x 36	None	(1) 2M x 64	(1) 4M x 64
80MB	(2) 8M x 36	None	(1) 1M x 64	(1) 1M x 64
80MB	(2) 2M x 36	(2) 8M x 36	None	None
80MB	(2) 8M x 36	None	(1) 2M x 64	None
88MB	(2) 8M x 36	None	(1) 1M x 64	(1) 2M x 64
96MB	None	None	(1) 4M x 64	(1) 8M x 64
96MB	(2) 4M x 36	None	(1) 4M x 64	(1) 4M x 64
96MB	(2) 8M x 36	None	(1) 2M x 64	(1) 2M x 64
96MB	(2) 4M x 36	(2) 8M x 36	None	None
96MB	(2) 8M x 36	None	(1) 4M x 64	None
104MB	(2) 8M x 36	None	(1) 1M x 64	(1) 4M x 64
112MB	(2) 8M x 36	None	(1) 2M x 64	(1) 4M x 64
128MB	(2) 16M x 36	None	None	None
128MB	(2) 8M x 36	(2) 8M x 36	None	None
128MB	(2) 8M x 36	None	(1) 4M x 64	(1) 4M x 64
128MB	None	None	(1) 8M x 64	(1) 8M x 64
136MB	(2) 16M x 36	None	(1) 1M x 64	None
136MB	(2) 1M x 36	(2) 16M x 36	None	None
144MB	(2) 2M x 36	(2) 16M x 36	None	None
144MB	(2) 16M x 36	None	(1) 2M x 64	None
144MB	(2) 16M x 36	None	(1) 1M x 64	(1) 1M x 64

Continued on next page. . .

MAGITRONICS

A - P 5 9 7 J T

... continued from previous page

DIMM/DRAM CONFIGURATION (CON'T)				
Size	Bank 0	Bank 1	Bank 2	Bank 3
152MB	(2) 16M x 36	None	(1) 1M x 64	(1) 2M x 64
160MB	(2) 16M x 36	None	(1) 2M x 64	(1) 2M x 64
160MB	(2) 4M x 36	(2) 16M x 36	None	None
160MB	(2) 16M x 36	None	(1) 4M x 64	None
168MB	(2) 16M x 36	None	(1) 1M x 64	(1) 4M x 64
176MB	(2) 16M x 36	None	(1) 2M x 64	(1) 4M x 64
192MB	(2) 16M x 36	None	(1) 4M x 64	(1) 4M x 64
192MB	(2) 16M x 36	(2) 8M x 36	None	None
256MB	(2) 8M x 36	(2) 8M x 36	None	None

Note: Board accepts EDO memory.

CACHE CONFIGURATION
Note: Board is factory installed with 512KB cache. The location is unidentified.

CPU SPEED SELECTION (CX M1)						
CPU speed	Clock speed	Multiplier	SW1/1	SW1/2	SW1/3	SW1/8
120MHz	50MHz	2x	On	On	Off	Off
133MHz	55MHz	2x	Off	On	Off	Off
150MHz	60MHz	2x	On	On	Off	Off
166MHz	66MHz	2x	Off	On	Off	Off

CPU SPEED SELECTION (IBM M1)						
CPU speed	Clock speed	Multiplier	SW1/1	SW1/2	SW1/3	SW1/8
120MHz	50MHz	2x	On	On	Off	Off
133MHz	55MHz	2x	Off	On	Off	Off
150MHz	60MHz	2x	On	On	Off	Off
166MHz	66MHz	2x	Off	On	Off	Off

CPU SPEED SELECTION (CX M2)						
CPU speed	Clock speed	Multiplier	SW1/1	SW1/2	SW1/3	SW1/8
166MHz	66MHz	2.5x	Off	On	On	Off
180MHz	60MHz	3x	On	Off	On	Off
200MHz	66MHz	3x	Off	Off	On	Off
233MHz	66MHz	3.5x	Off	Off	Off	Off

CPU SPEED SELECTION (IBM M2)						
CPU speed	Clock speed	Multiplier	SW1/1	SW1/2	SW1/3	SW1/8
166MHz	66MHz	2.5x	Off	On	On	Off
180MHz	60MHz	3x	On	Off	On	Off
200MHz	66MHz	3x	Off	Off	On	Off
233MHz	66MHz	3.5x	Off	Off	Off	Off

Continued on next page. . .

MAGITRONICS

A - P 5 9 7 J T

... continued from previous page

CPU SPEED SELECTION (AM K5)						
CPU speed	Clock speed	Multiplier	SW1/1	SW1/2	SW1/3	SW1/8
133MHz	66MHz	2x	Off	On	Off	Off
166MHz	66MHz	2.5x	Off	On	On	Off

CPU SPEED SELECTION (AM K6)						
CPU speed	Clock speed	Multiplier	SW1/1	SW1/2	SW1/3	SW1/8
166MHz	66MHz	2.5x	Off	On	On	Off
180MHz	60MHz	3x	On	Off	On	Off
200MHz	66MHz	3x	Off	Off	On	Off
233MHz	66MHz	3.5x	Off	Off	Off	Off

CPU SPEED SELECTION (INTEL)						
CPU speed	Clock speed	Multiplier	SW1/1	SW1/2	SW1/3	SW1/8
90MHz	60MHz	1.5x	On	Off	Off	Off
100MHz	66MHz	1.5x	Off	Off	Off	Off
120MHz	60MHz	2x	On	On	Off	Off
133MHz	66MHz	2x	Off	On	Off	Off
150MHz	60MHz	2.5x	On	On	On	Off
166MHz	66MHz	2.5x	Off	On	On	Off
180MHz	60MHz	3x	On	Off	On	Off
200MHz	66MHz	3x	Off	Off	On	Off

CPU VOLTAGE SELECTION				
Voltage	SW1/4	SW1/5	SW1/6	SW1/7
Auto	Off	Off	Off	On
2.0	Off	Off	Off	Off
2.1	Off	Off	On	Off
2.2	Off	On	Off	Off
2.3	Off	On	On	Off
2.4	On	Off	Off	Off
2.5	On	Off	On	Off
2.6	On	On	Off	Off
2.7	On	On	On	Off
2.8	Off	Off	Off	On
2.9	Off	Off	On	On
3.0	Off	On	Off	On
3.1	Off	On	On	On
3.2	On	Off	Off	On
3.3	On	Off	On	On
3.4	On	On	Off	On
3.5	On	On	On	On