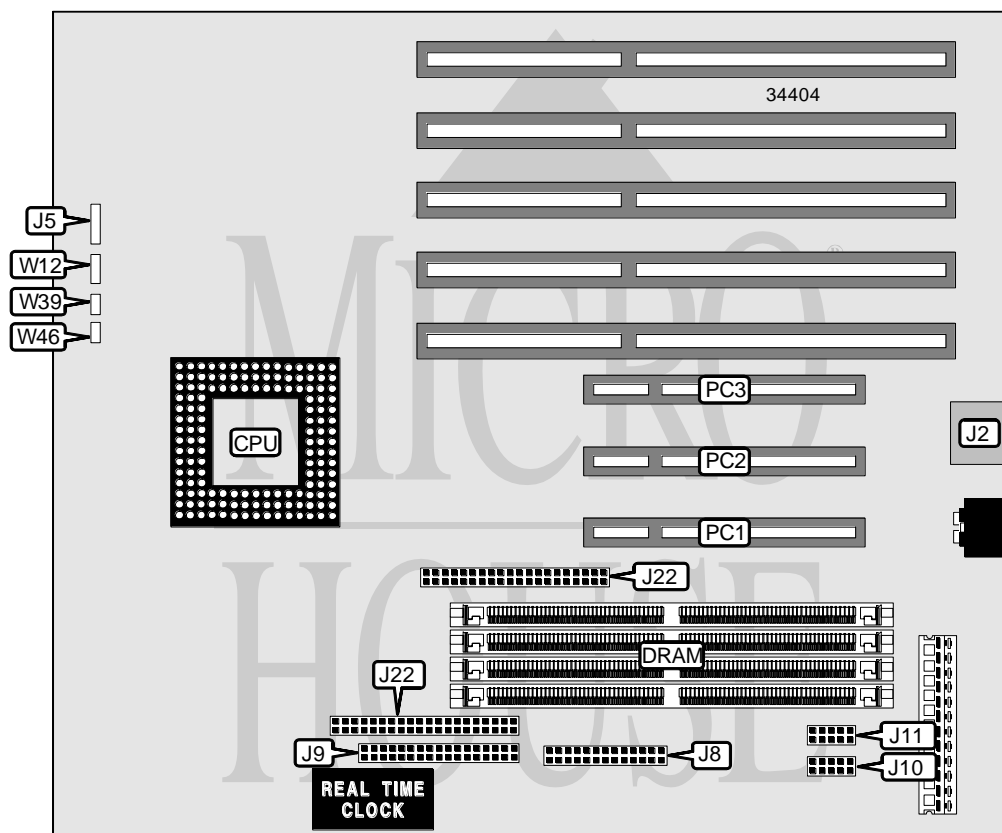


# IBM CORPORATION PERSONAL SYSTEM/2 HMM

<b>Processor</b>	80486SX/80486DX/80486DX2/80486DX4/P24T
<b>Processor Speed</b>	25/33/50(internal/66(internal)/75(internal)/100(internal)/MHz
<b>Chip Set</b>	Unidentified
<b>Video Chip Set</b>	None
<b>Maximum Onboard Memory</b>	Unidentified
<b>Maximum Video Memory</b>	None
<b>Cache</b>	128/256KB
<b>BIOS</b>	Unidentified
<b>Dimensions</b>	254mm x 218mm
<b>I/O Options</b>	32-bit PCI slots (3), floppy drive interface, IDE interfaces (2), parallel port, PS/2 mouse port, serial ports (2)
<b>NPU Options</b>	None



NOTE: THE LOCATION OF ALL JUMPERS ARE UNIDENTIFIED.

*Continued on next page...*

IBM CORPORATION  
PERSONAL SYSTEM/2 HMM

... continued from previous page

CONNECTIONS			
Purpose	Location	Purpose	Location
PS/2 mouse port	J2	IDE interface 1	J21
Speaker	J5	IDE interface 2	J22
Parallel port	J8	32-bit PCI slots	PC1 – PC3
Floppy drive interface	J9	Power LED	W12
Serial port 2	J10	IDE interface LED (PCI)	W39
Serial port 1	J11	IDE interface LED (ISA)	W46

USER CONFIGURABLE SETTINGS		
Function	Label	Position
í Secondary cache write select write back	W1	Pins 2 & 3 closed
Secondary cache write select write through	W1	Pins 1 & 2 closed
í Internal cache write select write through	W4	Open
Internal cache write select write back	W4	Closed
í Flash BIOS normal operation	W6	Pins 2 & 3 closed
Flash BIOS recovery mode	W6	Pins 1 & 2 closed
í Factory configured - do not alter	W8	Closed
í PS/2 mouse installed	W10	Closed
PS/2 mouse not installed	W10	Open
Parity generation select DPU	W17	Pins 1 & 2 closed
Parity generation select CPU	W17	Pins 2 & 3 closed
í DPU does not force parity	W18	Pins 2 & 3 closed
DPU forces parity	W18	Pins 1 & 2 closed
í Factory configured - do not alter	W19	Closed
í Cache installed	W21	Open
Cache not installed	W21	Closed

DRAM CONFIGURATION
Note: The maximum size and configuration is unidentified.

CACHE CONFIGURATION
Note: The location and configuration is unidentified.

CACHE JUMPER SELECTION			
Size	W5	W22	W23
128KB	Open	Closed	Open
256KB	Closed	Open	Closed

CACHE TAG SELECTION		
Size	W24	W26
7-bit	Open	Closed
8-bit	Closed	Closed
í 9-bit	Closed	Open

Continued on next page. . .

IBM CORPORATION  
PERSONAL SYSTEM/2 HMM

... continued from previous page

CPU SPEED SELECTION		
Speed	W16	W20
25MHz	Open	Closed
33MHz	Closed	Open
50iMHz	Open	Closed
66iMHz	Closed	Open
75iMHz	Open	Closed
100iMHz	Closed	Open

CPU TYPE SELECTION		
Type	W2	W3
80486SX	Pins 2 & 3 closed	Closed
80486DX	Pins 1 & 2, 3 & 4 closed	Closed
80486DX2	Pins 1 & 2, 3 & 4 closed	Closed
80486DX4	Pins 1 & 2, 3 & 4 closed	Closed
P24T	Pins 1 & 2, 3 & 4 closed	Open

CPU MULTIPLIER SELECTION	
Multiplier	W33
1x	Pins 1 & 2 closed
2x	Pins 2 & 3 closed
3x	Open

DMA CHANNEL SELECTION	
Channel	W43
í ISA IDE used P10 transfer	Open
6	Pins 1 & 2 closed
7	Pins 2 & 3 closed

ISA IDE IRQ SELECTION	
IRQ	W42
IRQ14	Pins 1 & 2 closed
IRQ15	Pins 2 & 3 closed

PCI IDE IRQ SELECTION		
IRQ	W35	W38
í IRQ14	Closed	Open
IRQ15	Open	Closed

Continued on next page...

IBM CORPORATION  
PERSONAL SYSTEM/2 HMM

... continued from previous page

PCI INTERRUPT SELECTION	
Setting	W37
INTR_A enabled	Closed
INTR_A disabled	Open

PCI COMPLIANT IRQ SELECTION	
IRQ	J101
IRQ1	Pin 2
IRQ3	Pin 3
IRQ4	Pin 4
IRQ5	Pin 5
IRQ6	Pin 6
IRQ7	Pin 7
IRQ8	Pin 8
IRQ9	Pin 9
IRQ10	Pin 10
IRQ11	Pin 11
IRQ12	Pin 12
IRQ14	Pin 13
IRQ15	Pin 14