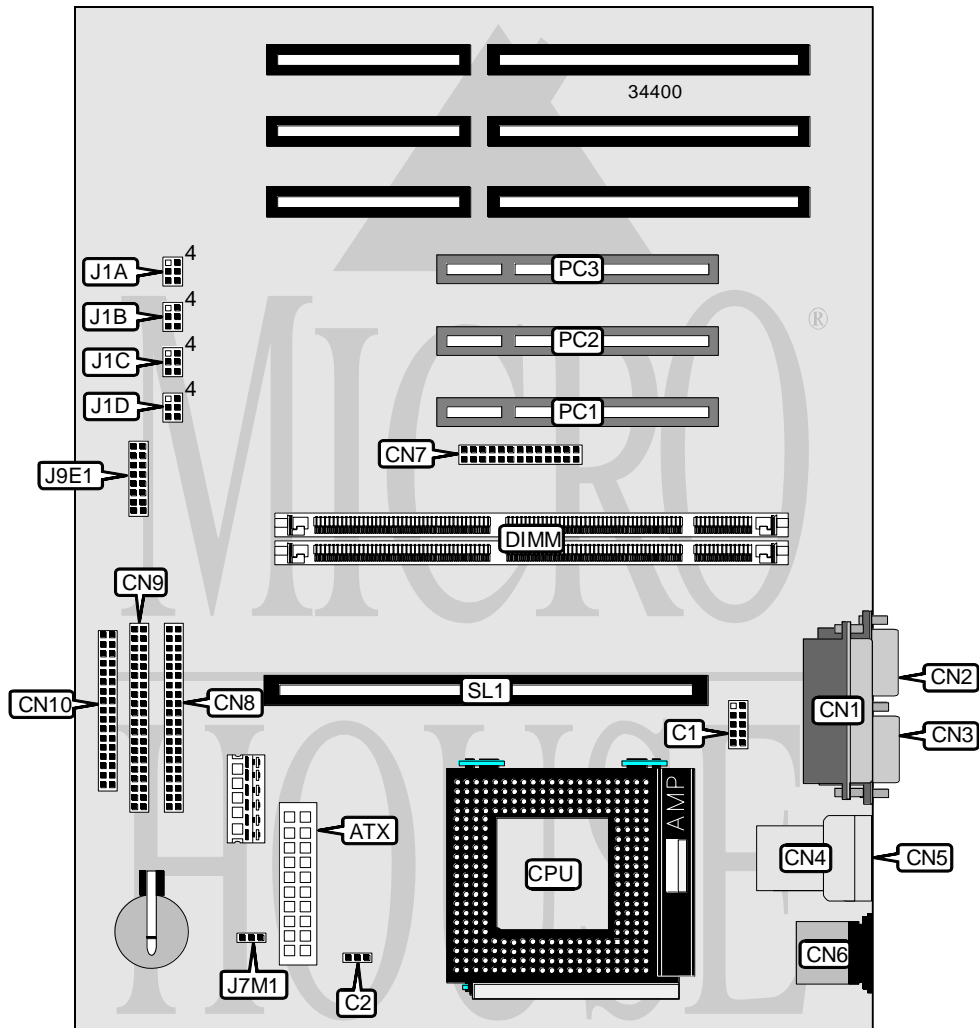


# DELL COMPUTER CORPORATION

## DIMENSION XPS PXXXA/MXXXA

<b>Processor</b>	Pentium
<b>Processor Speed</b>	133/166/200MHz
<b>Chip Set</b>	Intel
<b>Video Chip Set</b>	S3
<b>Maximum Onboard Memory</b>	64MB (EDO supported)
<b>Maximum Video Memory</b>	2MB
<b>Cache</b>	256/512KB
<b>BIOS</b>	Unidentified
<b>Dimensions</b>	305mm x 244mm
<b>I/O Options</b>	32-bit PCI slots (3), floppy drive interface, IDE interfaces (2), parallel port, PS/2 mouse port, serial port, VGA feature connector, VGA port, cache slot, USB connectors (2), ATX power connector
<b>NPU Options</b>	None



Continued on next page . . .

DELL COMPUTER CORPORATION  
 DIMENSION XPS PXXXA/MXXXA

... continued from previous page

CONNECTIONS			
Purpose	Location	Purpose	Location
ATX power connector	ATX	IDE interface 2	CN8
VGA port	CN1	IDE interface 1	CN9
Parallel port	CN2	Floppy drive interface	CN10
Serial port 1	CN3	Chassis fan power	J7M1
USB connector	CN4	Front panel connector	J9E1
USB connector	CN5	32-bit PCI slots	PC1 – PC3
PS/2 mouse port	CN6	Cache slot	SL1
VESA feature connector	CN7		

USER CONFIGURABLE SETTINGS		
Function	Label	Position
í Factory configured - do not alter	C1	Unidentified
í Factory configured - do not alter	C2	Unidentified
Password enabled	J1A	Pins 1 & 2 closed
Password disabled	J1A	Pins 2 & 3 closed
í CMOS memory normal operation	J1A	Pins 4 & 5 closed
CMOS memory clear	J1A	Pins 5 & 6 closed
Setup access enabled	J1B	Pins 1 & 2 closed
Setup access disabled	J1B	Pins 2 & 3 closed
í Factory configured - do not alter	J1B/pins 4 - 6	Open

DIMM CONFIGURATION		
Size	Bank 0	Bank 1
16MB	(1) 2M x 64	None
32MB	(1) 4M x 64	None
32MB	(1) 2M x 64	(1) 2M x 64
48MB	(1) 4M x 64	(1) 2M x 64
64MB	(1) 4M x 64	(1) 4M x 64

Note: Board accepts EDO memory. The location of the banks is unidentified.

CACHE CONFIGURATION	
Size	SL1
256KB	256KB module installed
512KB	512KB module installed

VIDEO MEMORY CONFIGURATION
Note: The location of the video memory is unidentified.

CPU SPEED SELECTION				
CPU speed	Clock speed	Multiplier	J1C	J1D
133MHz	66MHz	2x	1 & 2, 5 & 6	2 & 3, 4 & 5
166MHz	66MHz	2.5x	1 & 2, 5 & 6	2 & 3, 5 & 6
200MHz	66MHz	3x	1 & 2, 5 & 6	1 & 2, 5 & 6

Note: Pins designated should be in the closed position.