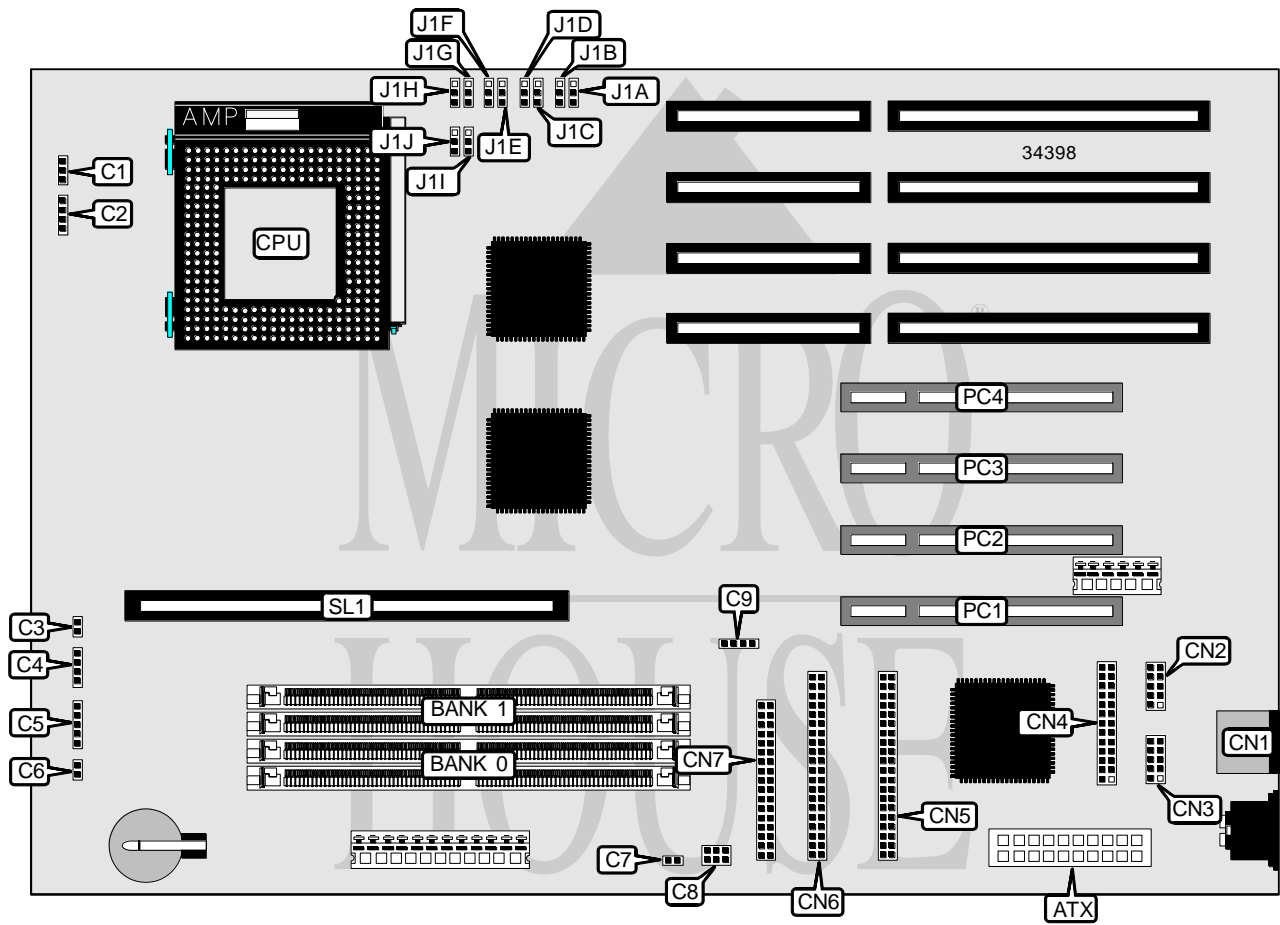


DELL COMPUTER CORPORATION DIMENSION XPS PXXXC

Processor	Pentium
Processor Speed	90/100/120/133/150/166MHz
Chip Set	Intel
Video Chip Set	None
Maximum Onboard Memory	128MB (EDO supported)
Maximum Video Memory	None
Cache	256/512KB
BIOS	Unidentified
Dimensions	330mm x 218mm
I/O Options	32-bit PCI slots (4), floppy drive interface, IDE interfaces (2), parallel port, PS/2 mouse port, serial ports (2), cache slot, ATX power connector
NPU Options	None



Continued on next page...

DELL COMPUTER CORPORATION
DIMENSION XPS PXXXC

... continued from previous page

CONNECTIONS			
Purpose	Location	Purpose	Location
ATX power connector	ATX	PS/2 mouse port	CN1
Chassis fan power	C1	Serial port 2	CN2
Speaker	C2	Serial port 1	CN3
Turbo LED	C3	Parallel port	CN4
IDE interface LED	C4	IDE interface 1	CN5
Power LED & keylock	C5	IDE interface 2	CN6
Reset switch	C6	Floppy drive interface	CN7
Soft off power supply	C7	32-bit PCI slots	PC1 – PC4
Chassis fan power	C8	Cache slot	SL1
Auxiliary LED	C9		

USER CONFIGURABLE SETTINGS		
Function	Label	Position
í Setup access enabled	J1D	Pins 2 & 3 closed
Setup access disabled	J1D	Pins 1 & 2 closed
í CMOS memory normal operation	J1E	Pins 2 & 3 closed
CMOS memory clear	J1E	Pins 1 & 2 closed
í Password enabled	J1F	Pins 2 & 3 closed
Password disabled	J1F	Pins 1 & 2 closed
í Factory configured - do not alter	J1G	Pins 2 & 3 closed
í Factory configured - do not alter	J1J	Unidentified
í Factory configured - do not alter	C2	Unidentified

DRAM CONFIGURATION		
Size	Bank 0	Bank 1
8MB	(2) 1M x 32	None
16MB	(2) 2M x 32	None
16MB	(2) 1M x 32	(2) 1M x 32
24MB	(2) 2M x 32	(2) 1M x 32
32MB	(2) 4M x 32	None
32MB	(2) 2M x 32	(2) 2M x 32
40MB	(2) 4M x 32	(2) 1M x 32
48MB	(2) 4M x 32	(2) 2M x 32
64MB	(2) 8M x 32	None
64MB	(2) 4M x 32	(2) 4M x 32
72MB	(2) 8M x 32	(2) 1M x 32
80MB	(2) 8M x 32	(2) 2M x 32
96MB	(2) 8M x 32	(2) 4M x 32
128MB	(2) 8M x 32	(2) 8M x 32

Note: Board accepts EDO memory.

Continued on next page. . .

DELL COMPUTER CORPORATION
 DIMENSION XPS PXXXC

... continued from previous page

CACHE CONFIGURATION	
Size	SL1
256KB	256KB module installed
512KB	512KB module installed

CPU SPEED SELECTION							
CPU speed	Clock speed	Multiplier	J1A	J1B	J1C	J1H	J1I
90MHz	60MHz	1.5x	1 & 2	1 & 2	2 & 3	1 & 2	2 & 3
100MHz	66MHz	1.5x	2 & 3	2 & 3	2 & 3	2 & 3	2 & 3
120MHz	60MHz	2x	1 & 2	1 & 2	1 & 2	2 & 3	2 & 3
133MHz	66MHz	2x	2 & 3	2 & 3	1 & 2	2 & 3	2 & 3
150MHz	60MHz	2.5x	1 & 2	1 & 2	1 & 2	2 & 3	1 & 2
166MHz	66MHz	2.5x	2 & 3	2 & 3	1 & 2	2 & 3	1 & 2

Note: Pins designated should be in the closed position.