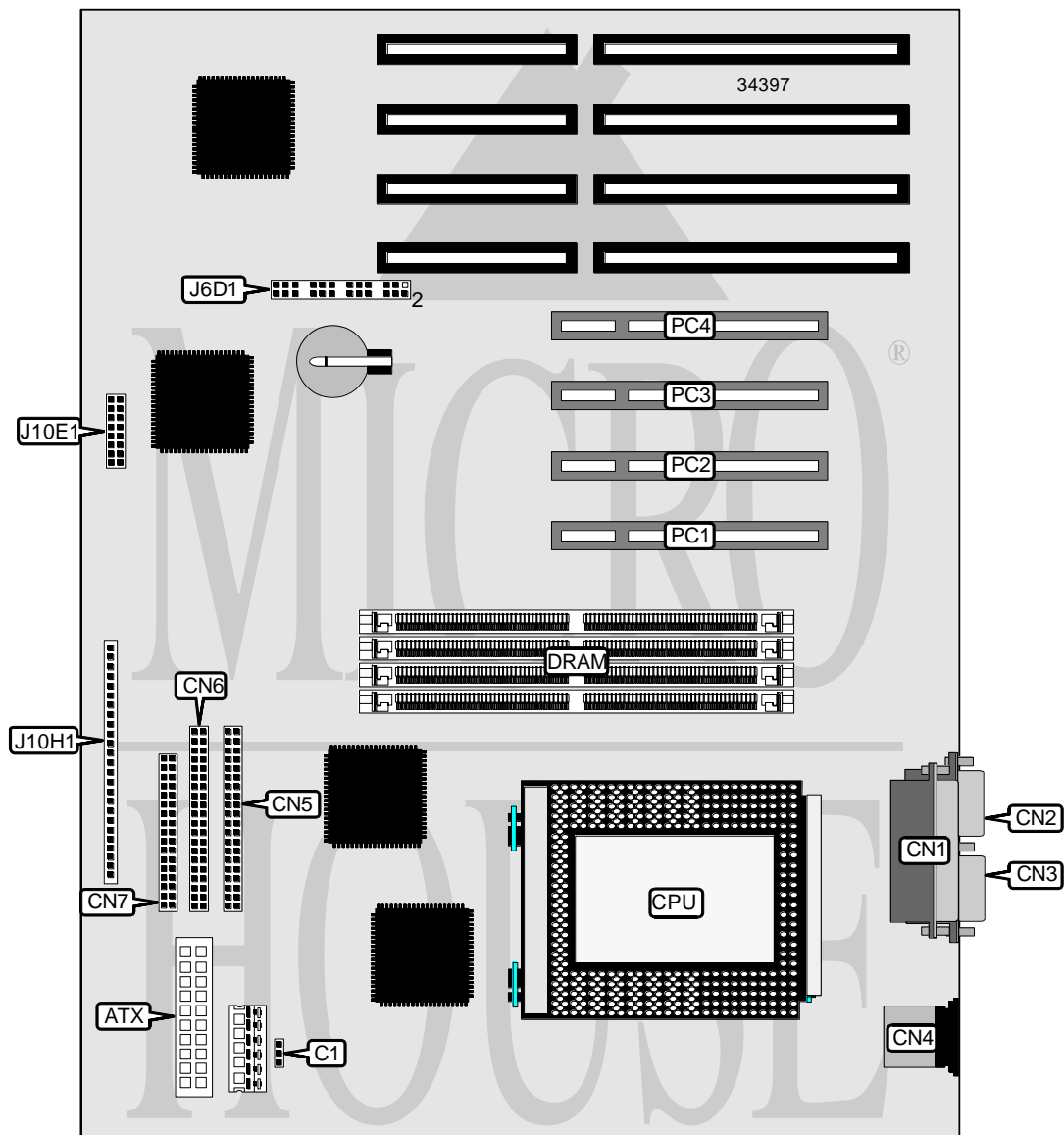


# DELL COMPUTER CORPORATION

## DIMENSION XPS PRO XXXN

<b>Processor</b>	Pentium Pro
<b>Processor Speed</b>	150/180/200MHz
<b>Chip Set</b>	Intel
<b>Video Chip Set</b>	None
<b>Maximum Onboard Memory</b>	128MB (EDO supported)
<b>Maximum Video Memory</b>	None
<b>Cache</b>	256/512KB (located on Pentium Pro CPU)
<b>BIOS</b>	Unidentified
<b>Dimensions</b>	305mm x 244mm
<b>I/O Options</b>	32-bit PCI slots (4), floppy drive interface, IDE interfaces (2), parallel port, PS/2 mouse port, serial ports (2), ATX power connector
<b>NPU Options</b>	None



*Continued on next page. . .*

DELL COMPUTER CORPORATION  
 DIMENSION XPS PRO XXXN

... continued from previous page

CONNECTIONS			
Purpose	Location	Purpose	Location
ATX power connector	ATX	IDE interface 1	CN6
Parallel port	CN1	Floppy drive interface	CN7
Serial port 2	CN2	Front panel connector	J10E1
Serial port 1	CN3	Front panel connector	J10H1
PS/2 mouse port	CN4	32-bit PCI slots	PC1 – PC4
IDE interface 2	CN5		

USER CONFIGURABLE SETTINGS		
Function	Label	Position
í Factory configured - do not alter	C1	Unidentified
í Factory configured - do not alter	J67D1	Pins 4 & 6 closed
í CMOS memory normal operation	J67D1	Pins 20 & 22 closed
CMOS memory clear	J67D1	Pins 18 & 20 closed
í Password enabled	J67D1	Pins 27 & 29 closed
Password disabled	J67D1	Pins 25 & 27 closed
í Setup access enabled	J67D1	Pins 28 & 30 closed
Setup access disabled	J67D1	Pins 26 & 28 closed

DRAM CONFIGURATION (NON PARITY SIMMS)		
Size	Bank 0	Bank 1
8MB	(2) 1M x 32	None
16MB	(2) 2M x 32	None
16MB	(2) 1M x 32	(2) 1M x 32
24MB	(2) 2M x 32	(2) 1M x 32
32MB	(2) 4M x 32	None
32MB	(2) 2M x 32	(2) 2M x 32
40MB	(2) 4M x 32	(2) 1M x 32
48MB	(2) 4M x 32	(2) 2M x 32
64MB	(2) 8M x 32	None
64MB	(2) 4M x 32	(2) 4M x 32
72MB	(2) 8M x 32	(2) 1M x 32
80MB	(2) 8M x 32	(2) 2M x 32
96MB	(2) 8M x 32	(2) 4M x 32
128MB	(2) 8M x 32	(2) 8M x 32

DRAM CONFIGURATION (PARITY SIMMS)		
Size	Bank 0	Bank 1
32MB	(2) 4M x 36	None
64MB	(2) 8M x 36	None
64MB	(2) 4M x 36	(2) 4M x 36
128MB	(2) 8M x 36	(2) 8M x 36

CACHE CONFIGURATION
Note: 256KB/512KB cache is located on the Pentium Pro CPU.

*Continued on next page. . .*

DELL COMPUTER CORPORATION  
DIMENSION XPS PRO XXXN

... continued from previous page

CPU SPEED SELECTION			
CPU speed	Clock speed	Multiplier	J6D1
150MHz	60MHz	2.5x	10 & 12, 11 & 13, 17 & 19
180MHz	60MHz	3x	9 & 11, 12 & 14, 17 & 19
200MHz	66MHz	3x	9 & 11, 12 & 14, 19 & 21

Note: Pins designated should be in the closed position.