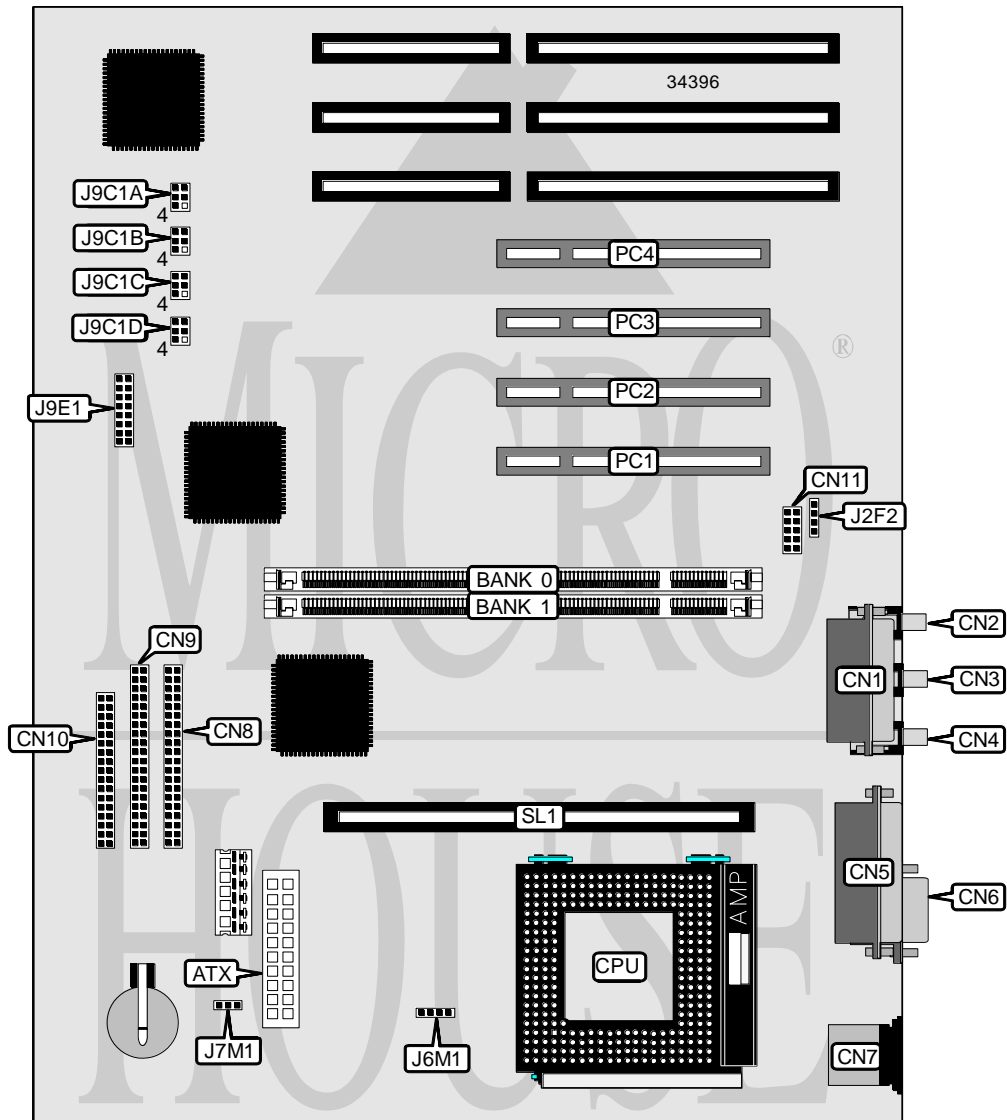


DELL COMPUTER CORPORATION DIMENSION PXXXS

Processor	Pentium
Processor Speed	133/166/200MHz
Chip Set	None
Video Chip Set	None
Maximum Onboard Memory	64MB
Maximum Video Memory	None
Cache	256/512KB
BIOS	Unidentified
Dimensions	305mm x 244mm
I/O Options	32-bit PCI slots (4), floppy drive interface, IDE interfaces (2), parallel port, PS/2 mouse port, serial ports (2), cache slot, ATX power connector, line in, line out, microphone in, game/MIDI port, wavetable connector, CD-ROM audio in
NPU Options	None



Continued on next page. . .

DELL COMPUTER CORPORATION
DIMENSION PXXXS

... continued from previous page

CONNECTIONS			
Purpose	Location	Purpose	Location
ATX power connector	ATX	IDE interface 1	CN9
Game/MIDI port	CN1	Floppy drive interface	CN10
Microphone in	CN2	Wavetable connector	CN11
Line in	CN3	CD-ROM audio in	J2F2
Line out	CN4	Chassis fan power	J7M1
Parallel port	CN5	Front panel connector	J9E1
Serial port	CN6	32-bit PCI slots	PC1 – PC4
PS/2 mouse port	CN7	Cache slot	SL1
IDE interface 2	CN8		

USER CONFIGURABLE SETTINGS		
Function	Label	Position
í Factory configured - do not alter	J6M1	Pins 2 & 3 closed
Password enabled	J9C1A	Pins 1 & 2 closed
Password disabled	J9C1A	Pins 2 & 3 closed
í CMOS memory normal operation	J9C1A	Pins 4 & 5 closed
CMOS memory clear	J9C1A	Pins 5 & 6 closed
í Setup access enabled	J9C1B	Pins 1 & 2 closed
Setup access disabled	J9C1B	Pins 2 & 3 closed
í Factory configured - do not alter	J9C1B/pins 4 - 6	Open

DIMM CONFIGURATION		
Size	Bank 0	Bank 1
16MB	(1) 2M x 64	None
32MB	(1) 4M x 64	None
32MB	(1) 2M x 64	(1) 2M x 64
48MB	(1) 4M x 64	(1) 2M x 64
64MB	(1) 4M x 64	(1) 4M x 64

CACHE CONFIGURATION	
Size	SL1
256KB	256KB module installed
512KB	512KB module installed

CPU SPEED SELECTION				
CPU speed	Clock speed	Multiplier	J9C1C	J9C1D
133MHz	66MHz	2x	1 & 2, 5 & 6	2 & 3, 4 & 5
166MHz	66MHz	2.5x	1 & 2, 5 & 6	2 & 3, 5 & 6
200MHz	66MHz	3x	1 & 2, 5 & 6	1 & 2, 5 & 6

Note: Pins designated should be in the closed position.