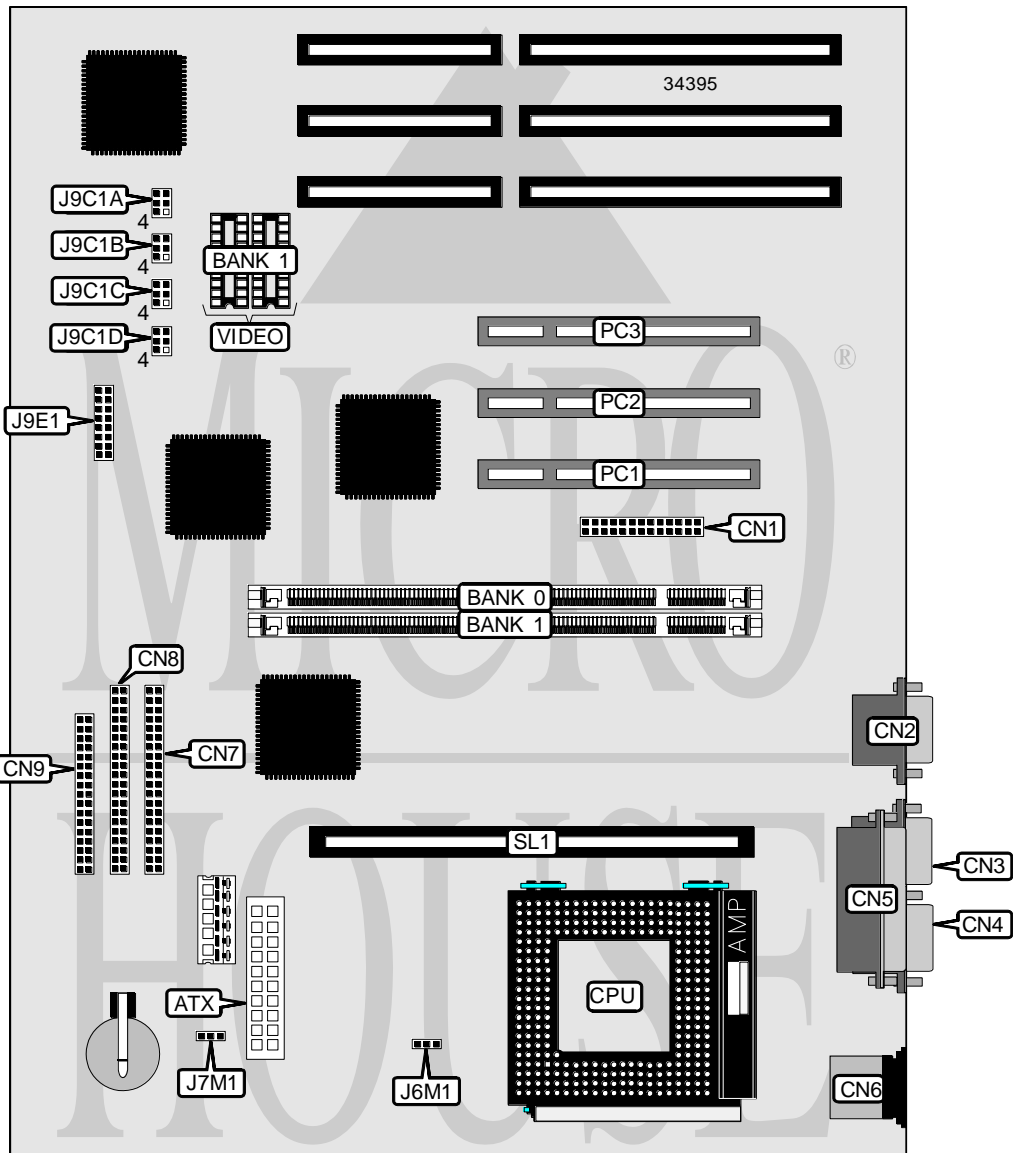


# DELL COMPUTER CORPORATION

## DIMENSION PXXXV

<b>Processor</b>	Pentium
<b>Processor Speed</b>	133/166/200MHz
<b>Chip Set</b>	Intel
<b>Video Chip Set</b>	S3
<b>Maximum Onboard Memory</b>	64MB
<b>Maximum Video Memory</b>	2MB
<b>Cache</b>	256/512KB
<b>BIOS</b>	Unidentified
<b>Dimensions</b>	305mm x 244mm
<b>I/O Options</b>	32-bit PCI slots (3), floppy drive interface, IDE interfaces (2), parallel port, PS/2 mouse port, serial ports (2), VESA feature connector, VGA port, cache slot, ATX power connector
<b>NPU Options</b>	None



Continued on next page. . .

DELL COMPUTER CORPORATION  
 DIMENSION PXXXV

... continued from previous page

CONNECTIONS			
Purpose	Location	Purpose	Location
ATX power connector	ATX	IDE interface 1	CN8
VESA feature connector	CN1	Floppy drive interface	CN9
VGA port	CN3	Chassis fan power	J7M1
Serial port 1	CN4	Front panel connector	J9E1
Parallel port	CN5	32-bit PCI slots	PC1 – PC4
PS/2 mouse port	CN6	Cache slot	SL1
IDE interface 2	CN7		

USER CONFIGURABLE SETTINGS		
Function	Label	Position
í Factory configured - do not alter	CN2	Unidentified
í Factory configured - do not alter	J6M1	Unidentified
Password enabled	J9C1A	Pins 1 & 2 closed
Password disabled	J9C1A	Pins 2 & 3 closed
í CMOS memory normal operation	J9C1A	Pins 4 & 5 closed
CMOS memory clear	J9C1A	Pins 5 & 6 closed
í Setup access enabled	J9C1B	Pins 1 & 2 closed
Setup access disabled	J9C1B	Pins 2 & 3 closed
í Factory configured - do not alter	J9C1B/pins 4 - 6	Open

DIMM CONFIGURATION		
Size	Bank 0	Bank 1
16MB	(1) 2M x 64	None
32MB	(1) 4M x 64	None
32MB	(1) 2M x 64	(1) 2M x 64
48MB	(1) 4M x 64	(1) 2M x 64
64MB	(1) 4M x 64	(1) 4M x 64

CACHE CONFIGURATION	
Size	SL1
256KB	256KB module installed
512KB	512KB module installed

VIDEO MEMORY CONFIGURATION		
Size	Bank 0	Bank 1
1MB	1MB	None
2MB	1MB	(2) 256K x 16

Note: Bank 0 is factory installed and is not configurable. The location is unidentified.

Continued on next page...

DELL COMPUTER CORPORATION  
DIMENSION PXXXV

... continued from previous page

CPU SPEED SELECTION				
CPU speed	Clock speed	Multiplier	J9C1C	J9C1D
133MHz	66MHz	2x	1 & 2, 5 & 6	2 & 3, 4 & 5
166MHz	66MHz	2.5x	1 & 2, 5 & 6	2 & 3, 5 & 6
200MHz	66MHz	3x	1 & 2, 5 & 6	1 & 2, 5 & 6

Note: Pins designated should be in the closed position.