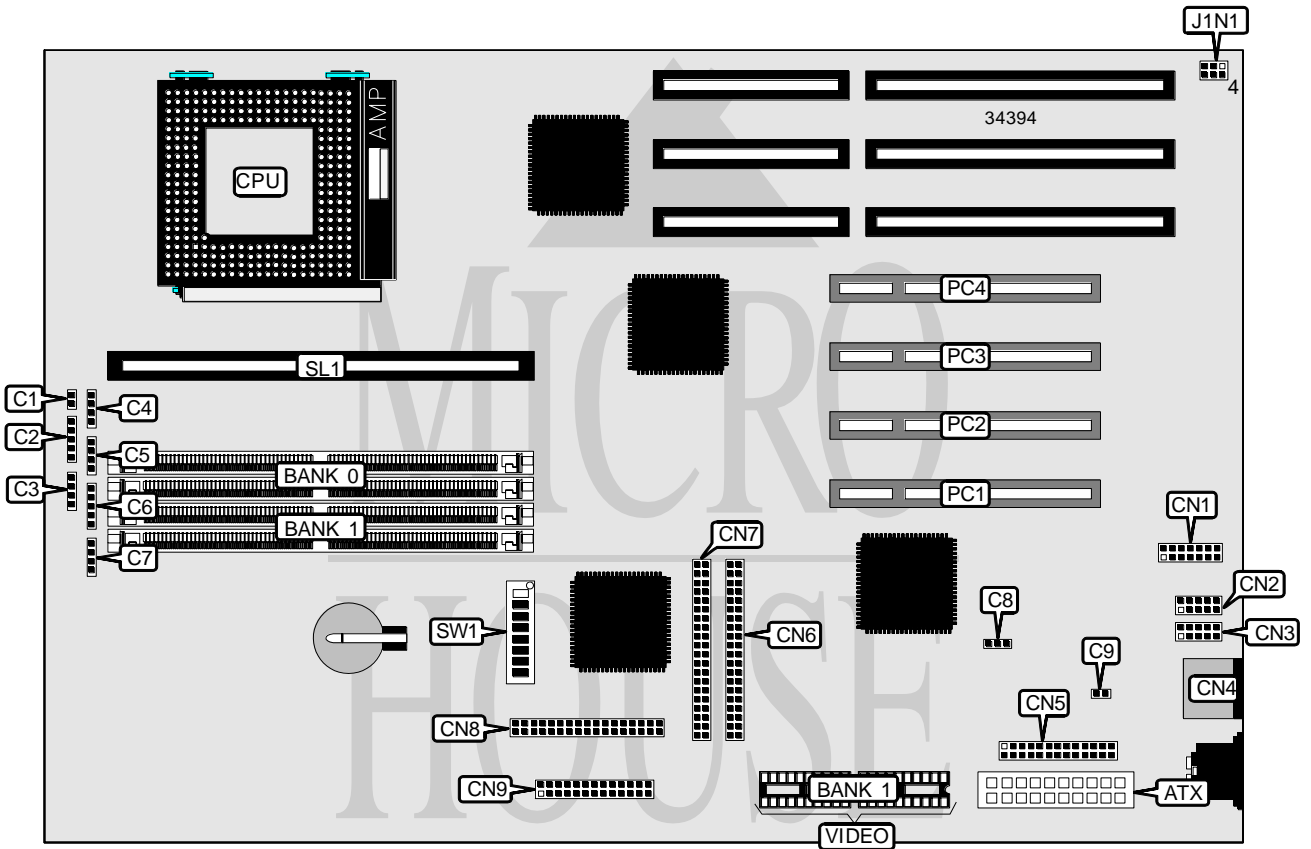


DELL COMPUTER CORPORATION DIMENSION PXXXT

| | |
|-------------------------------|--|
| Processor | Pentium |
| Processor Speed | 75/90/100/120/133MHz |
| Chip Set | Intel |
| Video Chip Set | S3 |
| Maximum Onboard Memory | 128MB (EDO supported) |
| Maximum Video Memory | 2MB |
| Cache | 256KB |
| BIOS | Unidentified |
| Dimensions | 330mm x 218mm |
| I/O Options | 32-bit PCI slots (4), floppy drive interface, green PC connector, IDE interfaces (2), parallel port, PS/2 mouse port, serial ports (2), VESA feature connector, VGA interface, cache slot, IR connector, ATX power connector |
| NPU Options | None |



Continued on next page . . .

DELL COMPUTER CORPORATION
DIMENSION PXXXT

... continued from previous page

| CONNECTIONS | | | |
|-----------------------|----------|------------------------|-----------|
| Purpose | Location | Purpose | Location |
| ATX power connector | ATX | Serial port 1 | CN2 |
| Reset switch | C1 | Serial port 2 | CN3 |
| Power LED & keylock | C2 | PS/2 mouse port | CN4 |
| IDE interface LED | C3 | VESA feature connector | CN5 |
| Speaker | C4 | IDE interface 2 | CN6 |
| Chassis fan power | C5 | IDE interface 1 | CN7 |
| IR connector | C6 | Floppy drive interface | CN8 |
| Green PC connector | C7 | Parallel port | CN9 |
| Chassis fan power | C8 | 32-bit PCI slots | PC1 – PC4 |
| Soft off power supply | C9 | Cache slot | SL1 |
| VGA interface | CN1 | | |

| USER CONFIGURABLE SETTINGS | | |
|-------------------------------------|-------|--------------|
| Function | Label | Position |
| í Factory configured - do not alter | J1N1 | Unidentified |
| í Factory configured - do not alter | SW1/1 | Off |
| í Password enabled | SW1/3 | Off |
| Password disabled | SW1/3 | On |
| í CMOS memory normal operation | SW1/4 | Off |
| CMOS memory clear | SW1/4 | On |
| í Setup access enabled | SW1/5 | Off |
| Setup access disabled | SW1/5 | On |

| DRAM CONFIGURATION | | |
|--------------------|-------------|-------------|
| Size | Bank 0 | Bank 1 |
| 8MB | (2) 1M x 32 | None |
| 16MB | (2) 2M x 32 | None |
| 16MB | (2) 1M x 32 | (2) 1M x 32 |
| 24MB | (2) 2M x 32 | (2) 1M x 32 |
| 32MB | (2) 4M x 32 | None |
| 32MB | (2) 2M x 32 | (2) 2M x 32 |
| 40MB | (2) 4M x 32 | (2) 1M x 32 |
| 48MB | (2) 4M x 32 | (2) 2M x 32 |
| 64MB | (2) 8M x 32 | None |
| 64MB | (2) 4M x 32 | (2) 4M x 32 |
| 72MB | (2) 8M x 32 | (2) 1M x 32 |
| 80MB | (2) 8M x 32 | (2) 2M x 32 |
| 96MB | (2) 8M x 32 | (2) 4M x 32 |
| 128MB | (2) 8M x 32 | (2) 8M x 32 |

Note: Board accepts EDO memory.

Continued on next page. . .

DELL COMPUTER CORPORATION
 DIMENSION PXXXT

... continued from previous page

| CACHE CONFIGURATION | |
|---------------------|------------------------|
| Size | SL1 |
| 256KB | 256KB module installed |

| VIDEO MEMORY CONFIGURATION | | |
|--|--------|---------------|
| Size | Bank 0 | Bank 1 |
| 1MB | 1MB | None |
| 2MB | 1MB | (2) 256K x 16 |
| Note: Bank 0 is factory installed and is not configurable. The location is unidentified. | | |

| CPU SPEED SELECTION | | | | | |
|---------------------|-------------|------------|-------|-------|-------|
| CPU speed | Clock speed | Multiplier | SW1/6 | SW1/7 | SW1/8 |
| 75MHz | 50MHz | 1.5x | Off | On | Off |
| 90MHz | 60MHz | 1.5x | Off | Off | Off |
| 100MHz | 66MHz | 1.5x | Off | On | On |
| 120MHz | 60MHz | 2x | On | Off | Off |
| 133MHz | 66MHz | 2x | On | On | On |

| CPU VOLTAGE SELECTION | |
|-----------------------|-------|
| Voltage | SW1/2 |
| 3.3v | Off |
| 3.45v – 3.6v | On |