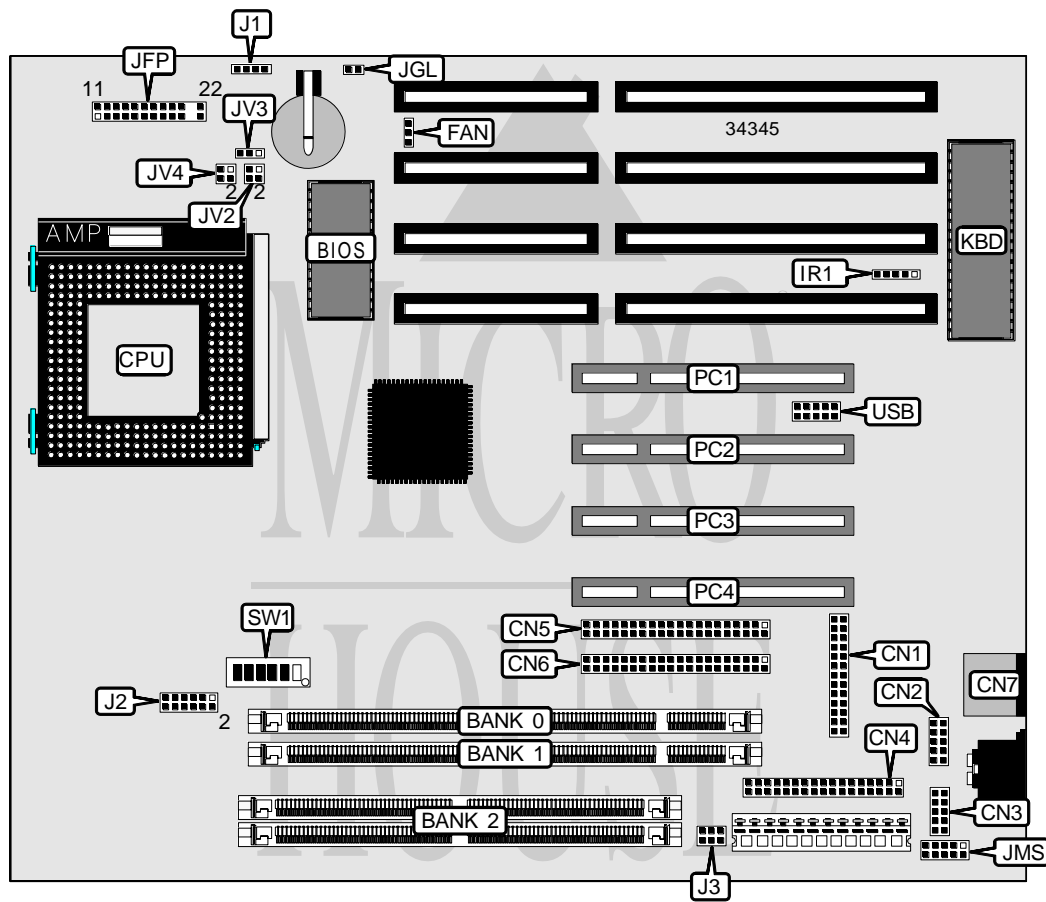


MICRO-STAR INTERNATIONAL CO., LTD.
MS - 5 1 4 4

Processor	CX M1/AM K5/Pentium
Processor Speed	90/100/120/133/150/166/200MHz
Chip Set	SIS
Video Chip Set	None
Maximum Onboard Memory	384MB (EDO supported)
Maximum Video Memory	None
Cache	256/512KB
BIOS	AMI/Award
Dimensions	250mm x 220mm
I/O Options	32-bit PCI slots (4), floppy drive interface, IDE interfaces (2), parallel port, PS/2 mouse port, serial ports (2), IR connector, USB connector
NPU Options	None



Continued on next page . . .

MICRO-STAR INTERNATIONAL CO., LTD.
MS - 5 1 4 4

... continued from previous page

CONNECTIONS			
Purpose	Location	Purpose	Location
Parallel port	CN1	Power LED & keylock	JFP/pins 1 - 5
Serial port 2	CN2	Speaker	JFP/pins 7 - 10
Serial port 1	CN3	Turbo LED	JFP/pins 12 & 13
Floppy drive interface	CN4	Reset switch	JFP/pins 19 & 20
IDE interface 2	CN5	IDE interface LED	JFP/pins 21 & 22
IDE interface 1	CN6	Green PC LED	JGL
PS/2 mouse port	CN7	PS/2 mouse interface	JMS
Chassis fan power	FAN	32-bit PCI slots	PC1 – PC4
IR connector	IR1	USB connector	USB

USER CONFIGURABLE SETTINGS		
Function	Label	Position
í Factory configured - do not alter	J1	Unidentified
í Factory configured - do not alter	J3	Unidentified

DIMM/DRAM CONFIGURATION			
Size	Bank 0	Bank 1	Bank 2
8MB	(1) 1M x 64	None	None
12MB	(1) 1M x 64	None	(2) 512K x 36
16MB	(1) 2M x 64	None	None
16MB	(1) 1M x 64	(1) 1M x 64	None
16MB	(1) 1M x 64	None	(2) 1M x 36
20MB	(1) 2M x 64	None	(2) 512K x 36
24MB	(1) 2M x 64	(1) 1M x 64	None
24MB	(1) 1M x 64	None	(2) 2M x 36
32MB	(1) 4M x 64	None	None
32MB	(1) 2M x 64	(1) 2M x 64	None
32MB	(1) 2M x 64	None	(2) 2M x 36
36MB	(1) 4M x 64	None	(2) 512K x 36
40MB	(1) 4M x 64	(1) 1M x 64	None
40MB	(1) 1M x 64	None	(2) 4M x 36
40MB	(1) 4M x 64	None	(2) 1M x 36
48MB	(1) 4M x 64	(1) 2M x 64	None
48MB	(1) 2M x 64	None	(2) 4M x 36
48MB	(1) 4M x 64	None	(2) 2M x 36
64MB	(1) 8M x 64	None	None
64MB	(1) 4M x 64	(1) 4M x 64	None
64MB	(1) 4M x 64	None	(2) 4M x 36
68MB	(1) 8M x 64	None	(2) 512K x 36
72MB	(1) 8M x 64	(1) 1M x 64	None
72MB	(1) 1M x 64	None	(2) 8M x 36
72MB	(1) 8M x 64	None	(2) 1M x 36

Continued on next page...

MICRO-STAR INTERNATIONAL CO., LTD.

MS - 5 1 4 4

... continued from previous page

DIMM/DRAM CONFIGURATION (CON'T)			
Size	Bank 0	Bank 1	Bank 2
80MB	(1) 8M x 64	(1) 2M x 64	None
80MB	(1) 2M x 64	None	(2) 8M x 36
80MB	(1) 8M x 64	None	(2) 2M x 36
96MB	(1) 8M x 64	(1) 4M x 64	None
96MB	(1) 8M x 64	None	(2) 4M x 36
96MB	(1) 4M x 64	None	(2) 8M x 36
128MB	(1) 16M x 64	None	None
128MB	(1) 8M x 64	(1) 8M x 64	None
128MB	(1) 8M x 64	None	(2) 8M x 36
132MB	(1) 16M x 64	None	(2) 512K x 36
136MB	(1) 1M x 64	None	(2) 16M x 36
136MB	(1) 16M x 64	None	(2) 1M x 36
144MB	(1) 2M x 64	None	(2) 16M x 36
144MB	(1) 16M x 64	None	(2) 2M x 36
160MB	(1) 4M x 64	None	(2) 16M x 36
160MB	(1) 16M x 64	None	(2) 4M x 36
192MB	(1) 8M x 64	None	(2) 16M x 36
192MB	(1) 16M x 64	None	(2) 8M x 36
256MB	(1) 32M x 64	None	None
256MB	(1) 16M x 64	(1) 16M x 64	None
256MB	(1) 16M x 64	None	(2) 16M x 36
384MB	(1) 32M x 64	None	(2) 16M x 36

Note: Board accepts EDO memory. Banks 0 & 1 are interchangeable.

DIMM VOLTAGE CONFIGURATION	
Voltage	J2
3.3v	Pins 1 & 2, 3 & 4 closed
5v	Pins 9 & 10, 11 & 12 closed

CACHE CONFIGURATION
Note: The location and chip sizes are unidentified.

CPU SPEED SELECTION (CYRIX)								
CPU speed	Clock speed	Multiplier	SW1/1	SW1/2	SW1/3	SW1/4	SW1/5	SW1/6
150MHz	60MHz	2x	On	Off	On	Off	Off	On
166MHz	66MHz	2x	On	Off	Off	Off	Off	On
200MHz	66MHz	2x	On	Off	Off	On	Off	On

Continued on next page...

MICRO-STAR INTERNATIONAL CO., LTD.
MS - 5 1 4 4

... continued from previous page

CPU SPEED SELECTION (AMD)								
CPU speed	Clock speed	Multiplier	SW1/1	SW1/2	SW1/3	SW1/4	SW1/5	SW1/6
90MHz	60MHz	1.5x	Off	Off	On	Off	Off	Off
100MHz	66MHz	1.5x	Off	Off	Off	Off	Off	Off
120MHz	60MHz	1.5x	Off	Off	On	Off	Off	Off
133MHz	66MHz	1.5x	Off	Off	Off	Off	Off	Off
166MHz	66MHz	2.5x	On	On	Off	Off	Off	Off

CPU SPEED SELECTION (INTEL)								
CPU speed	Clock speed	Multiplier	SW1/1	SW1/2	SW1/3	SW1/4	SW1/5	SW1/6
90MHz	60MHz	1.5x	Off	Off	On	Off	Off	Off
100MHz	66MHz	1.5x	Off	Off	Off	Off	Off	Off
120MHz	60MHz	2x	On	Off	On	Off	Off	Off
133MHz	66MHz	2x	On	Off	Off	Off	Off	Off
150MHz	60MHz	2.5x	On	On	On	Off	Off	Off
166MHz	66MHz	2.5x	On	On	Off	Off	Off	Off
200MHz	66MHz	3x	Off	On	Off	Off	Off	Off

CPU VOLTAGE SELECTION (SINGLE)			
Voltage	JV2	JV3	JV4
3.38v	Open	Pins 2 & 3 closed	Open
3.52v	Pins 1 & 2 closed	Pins 2 & 3 closed	Open

CPU VOLTAGE SELECTION (DUAL)				
Voltage	V core	JV2	JV3	JV4
3.3v	2.8v	Pins 1 & 2, 3 & 4 closed	Pins 1 & 2 closed	Open