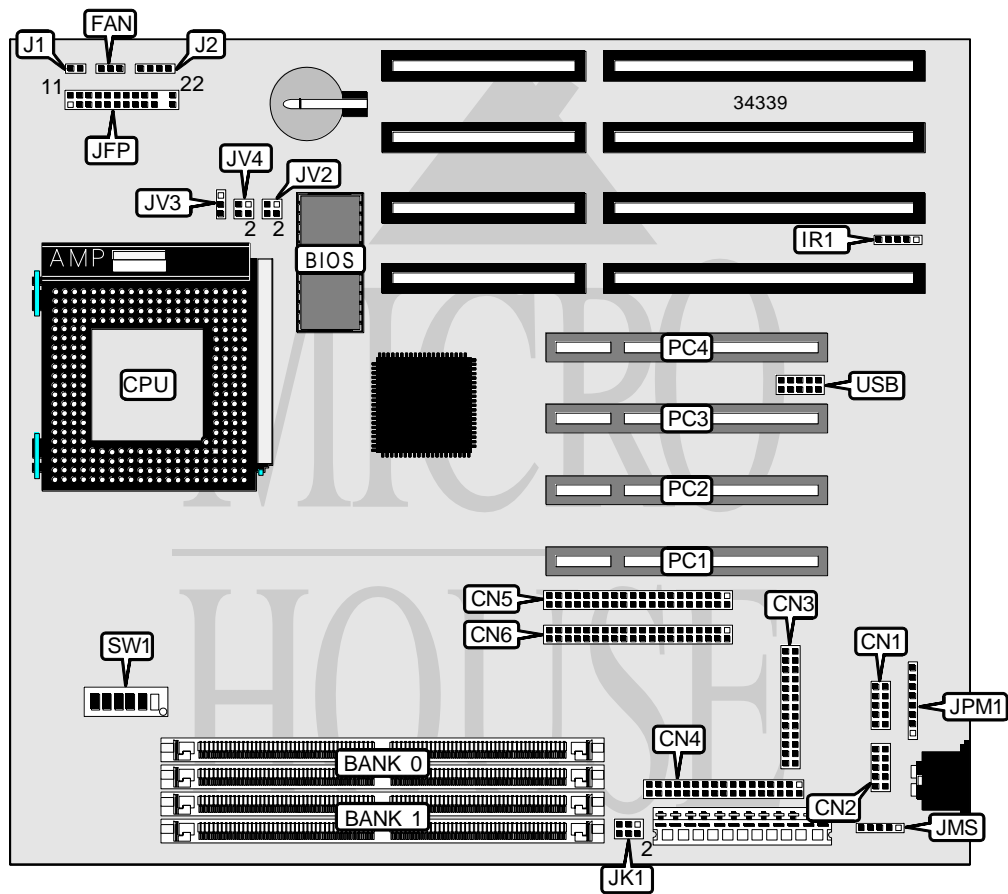


MICRO-STAR INTERNATIONAL CO., LTD.
 MS - 5 1 4 6

Processor	CX M1/AM K5/Pentium
Processor Speed	75/90/100/120/133/150/166/200MHz
Chip Set	SIS
Video Chip Set	None
Maximum Onboard Memory	256MB (EDO supported)
Maximum Video Memory	None
Cache	256/512KB
BIOS	AMI/Award
Dimensions	250mm x 220mm
I/O Options	32-bit PCI slots (4), floppy drive interface, IDE interfaces (2), parallel port, PS/2 mouse interface, serial ports (2), IR connector, USB connector
NPU Options	None



Continued on next page. . .

MICRO-STAR INTERNATIONAL CO., LTD.
MS - 5 1 4 6

... continued from previous page

CONNECTIONS			
Purpose	Location	Purpose	Location
Serial port 2	CN1	Speaker	JFP/pins 7 - 10
Serial port 1	CN2	Turbo LED	JFP/pins 12 & 13
Parallel port	CN3	Reset switch	JFP/pins 19 & 20
Floppy drive interface	CN4	IDE interface LED	JFP/pins 21 & 22
IDE interface 2	CN5	PS/2 mouse interface	JMS
IDE interface 1	CN6	PS/2 & auxiliary keyboard	JPM1
Chassis fan power	FAN	32-bit PCI slots	PC1 – PC4
IR connector	IR1	USB connector	USB
Power LED & keylock	JFP/pins 1 - 5		

USER CONFIGURABLE SETTINGS		
Function	Label	Position
í Factory configured - do not alter	J1	Unidentified
í Factory configured - do not alter	J2	Unidentified

DRAM CONFIGURATION		
Size	Bank 0	Bank 1
2MB	(2) 256K x 36	None
4MB	(2) 512K x 36	None
4MB	(2) 256K x 36	(2) 256K x 36
8MB	(2) 1M x 36	None
16MB	(2) 2M x 36	None
16MB	(2) 1M x 36	(2) 1M x 36
24MB	(2) 2M x 36	(2) 1M x 36
32MB	(2) 4M x 36	None
32MB	(2) 2M x 36	(2) 2M x 36
40MB	(2) 4M x 36	(2) 1M x 36
48MB	(2) 4M x 36	(2) 2M x 36
64MB	(2) 8M x 36	None
64MB	(2) 4M x 36	(2) 4M x 36
72MB	(2) 8M x 36	(2) 1M x 36
80MB	(2) 8M x 36	(2) 2M x 36
96MB	(2) 8M x 36	(2) 4M x 36
128MB	(2) 8M x 36	(2) 8M x 36
128MB	(2) 16M x 36	None
136MB	(2) 16M x 36	(2) 1M x 36
144MB	(2) 16M x 36	(2) 2M x 36
160MB	(2) 16M x 36	(2) 4M x 36
192MB	(2) 16M x 36	(2) 8M x 36
256MB	(2) 16M x 36	(2) 16M x 36

Note: Board accepts EDO memory. Banks are interchangeable.

Continued on next page...

MICRO-STAR INTERNATIONAL CO., LTD.

MS - 5 1 4 6

... continued from previous page

CACHE CONFIGURATION	
Size	Bank 0
256KB	(2) 32K x 32
512KB	(2) 64K x 32

Note: The location of bank 0 is unidentified.

CPU SPEED SELECTION (CYRIX)					
CPU speed	Clock speed	Multiplier	JK1	SW1/1	SW1/2
120MHz	50MHz	2x	1 & 2, 5 & 6	On	Off
133MHz	60MHz	2x	Open	On	Off
150MHz	66MHz	2x	Open	On	Off
166MHz	60MHz	2x	Open	On	Off
200MHz	66MHz	2x	Open	On	Off

Note: Pins designated should be in the closed position.

CPU SPEED SELECTION (CYRIX, CON'T)						
CPU speed	Clock speed	Multiplier	SW1/3	SW1/4	SW1/5	SW1/6
120MHz	50MHz	2x	On	On	Off	On
133MHz	55MHz	2x	Off	On	Off	On
150MHz	60MHz	2x	On	Off	Off	On
166MHz	66MHz	2x	Off	Off	Off	On
200MHz	66MHz	2x	On	Off	On	On

CPU SPEED SELECTION (AMD)					
CPU speed	Clock speed	Multiplier	JK1	SW1/1	SW1/2
75MHz	50MHz	1.5x	1 & 2, 5 & 6	Off	Off
90MHz	60MHz	1.5x	Open	Off	Off
100MHz	66MHz	1.5x	Open	Off	Off
120MHz	60MHz	1.5x	Open	Off	Off
133MHz	66MHz	1.5x	Open	Off	Off
166MHz	66MHz	2.5x	Open	On	On

Note: Pins designated should be in the closed position.

CPU SPEED SELECTION (AMD, CON'T)						
CPU speed	Clock speed	Multiplier	SW1/3	SW1/4	SW1/5	SW1/6
75MHz	50MHz	1.5x	On	On	Off	Off
90MHz	60MHz	1.5x	On	Off	Off	Off
100MHz	66MHz	1.5x	Off	Off	Off	Off
120MHz	60MHz	1.5x	On	Off	Off	Off
133MHz	66MHz	1.5x	Off	Off	Off	Off
166MHz	66MHz	2.5x	Off	Off	Off	Off

Continued on next page...

MICRO-STAR INTERNATIONAL CO., LTD.
MS - 5 1 4 6

... continued from previous page

CPU SPEED SELECTION (INTEL)					
CPU speed	Clock speed	Multiplier	JK1	SW1/1	SW1/2
75MHz	50MHz	1.5x	1 & 2, 5 & 6	Off	Off
90MHz	60MHz	1.5x	Open	Off	Off
100MHz	66MHz	1.5x	Open	Off	Off
120MHz	60MHz	2x	Open	On	Off
133MHz	66MHz	2x	Open	On	Off
150MHz	60MHz	2.5x	Open	On	On
166MHz	66MHz	2.5x	Open	On	On
200MHz	66MHz	3x	Open	Off	On

Note: Pins designated should be in the closed position.

CPU SPEED SELECTION (INTEL, CON'T)						
CPU speed	Clock speed	Multiplier	SW1/3	SW1/4	SW1/5	SW1/6
75MHz	50MHz	1.5x	On	On	Off	Off
90MHz	60MHz	1.5x	On	Off	Off	Off
100MHz	66MHz	1.5x	Off	Off	Off	Off
120MHz	60MHz	2x	On	Off	Off	Off
133MHz	66MHz	2x	Off	Off	Off	Off
150MHz	60MHz	2.5x	On	Off	Off	Off
166MHz	66MHz	2.5x	Off	Off	Off	Off
200MHz	66MHz	3x	Off	Off	Off	Off

CPU VOLTAGE SELECTION (SINGLE)			
Voltage	JV2	JV3	JV4
3.38v	Open	Pins 1 & 2 closed	Open
3.52v	Pins 1 & 2 closed	Pins 1 & 2 closed	Open

CPU VOLTAGE SELECTION (DUAL)				
Voltage	V core	JV2	JV3	JV4
3.3v	2.8v	Pins 1 & 2, 3 & 4 closed	Pins 2 & 3 closed	Open
3.3v	2.9v	Pins 1 & 2 closed	Pins 2 & 3 closed	Pins 3 & 4 closed
3.3v	3v	Open	Pins 2 & 3 closed	Pins 1 & 2 closed