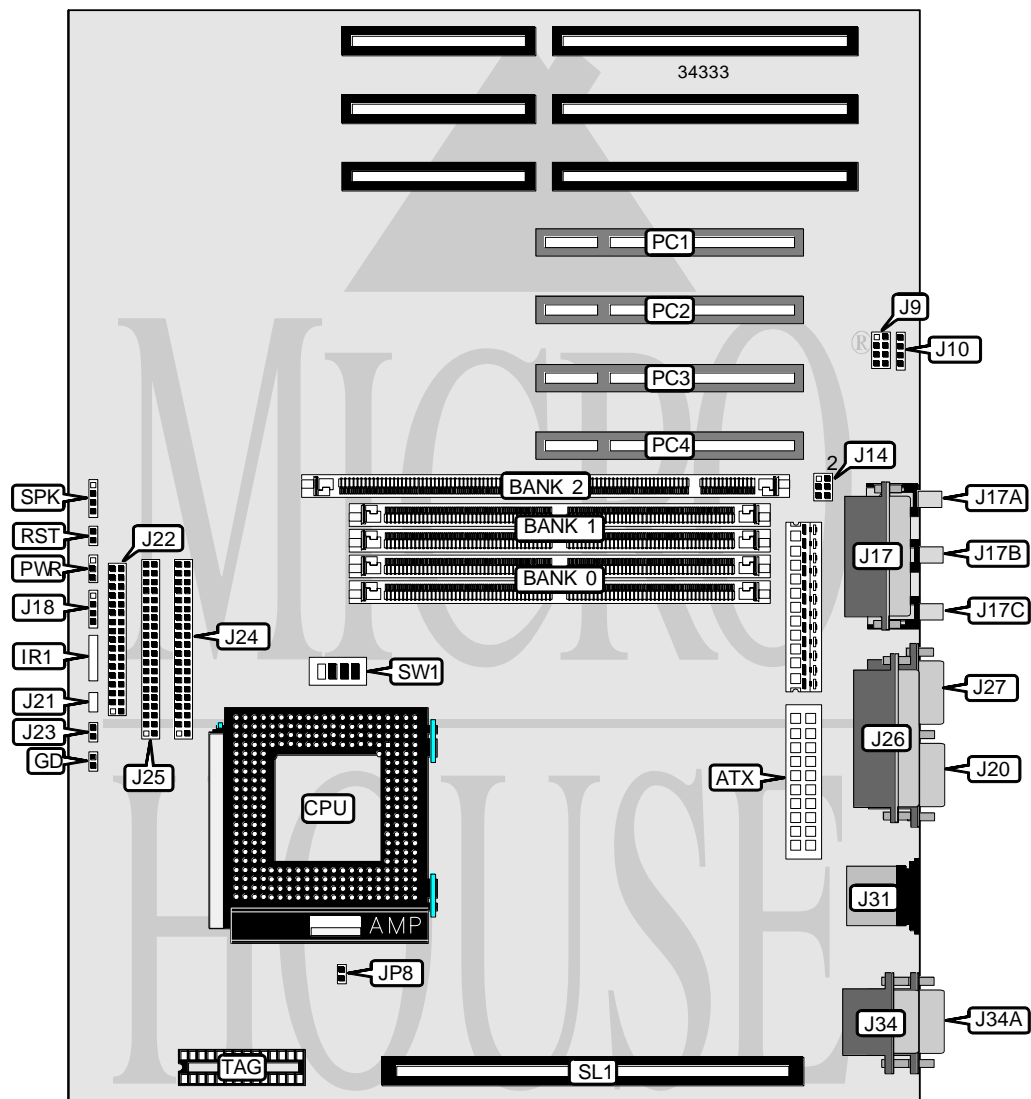


GIGA-BYTE TECHNOLOGY CO., LTD.

GA - 586SVX

Processor	CX M1/AM K5/Pentium
Processor Speed	75/90/100/120/125/133/150/166/180/200MHz
Chip Set	Unidentified
Video Chip Set	None
Maximum Onboard Memory	128MB (EDO supported)
Maximum Video Memory	None
Cache	256/512KB
BIOS	Award
Dimensions	305mm x 244mm
I/O Options	32-bit PCI slots (4), floppy drive interface, game port, green PC connector, IDE interfaces (2), parallel port, PS/2 mouse port, serial ports (2), cache slot, IR connector, ATX power connector, line in, line out, microphone in, wavetable connector, audio cable connector
NPU Options	None



Continued on next page. . .

GIGA-BYTE TECHNOLOGY CO., LTD.
G A - 5 8 6 S V X

... continued from previous page

CONNECTIONS			
Purpose	Location	Purpose	Location
ATX power connector	ATX	IDE interface 1	J24
Green PC LED	GD	IDE interface 2	J25
IR connector	IR1	Parallel port	J26
Wavetable connector	J9	PS/2 mouse port	J31
Audio cable connector	J10	Serial port 2	J34
Game port	J17	Serial port 1	J34A
Microphone in	J17A	Chassis fan power	JP8
Line in	J17B	32-bit PCI slots	PC1 – PC4
Line out	J17C	Power LED	PWR
IDE interface LED	J18	Reset switch	RST
Soft off power supply	J21	Cache slot	SL1
Floppy drive interface	J22	Speaker	SPK
Green PC connector	J23		

USER CONFIGURABLE SETTINGS		
Function	Label	Position
Line out enabled	J14	Pins 1 & 2, 4 & 5 closed
Speaker out enabled	J14	Pins 2 & 3, 5 & 6 closed
í Factory configured – do not alter	J20	Unidentified
í Factory configured – do not alter	J27	Unidentified

DRAM CONFIGURATION		
Size	Bank 0	Bank 1
8MB	(2) 1M x 36	None
16MB	(2) 2M x 36	None
16MB	(2) 1M x 36	(2) 1M x 36
24MB	(2) 2M x 36	(2) 1M x 36
32MB	(2) 4M x 36	None
32MB	(2) 2M x 36	(2) 2M x 36
40MB	(2) 4M x 36	(2) 1M x 36
48MB	(2) 4M x 36	(2) 2M x 36
64MB	(2) 8M x 36	None
64MB	(2) 4M x 36	(2) 4M x 36
72MB	(2) 8M x 36	(2) 1M x 36
80MB	(2) 8M x 36	(2) 2M x 36
96MB	(2) 8M x 36	(2) 4M x 36
128MB	(2) 8M x 36	(2) 8M x 36

Note: Board accepts EDO memory.

Continued on next page. . .

GIGA-BYTE TECHNOLOGY CO., LTD.
GA - 586SVX

... continued from previous page

DIMM CONFIGURATION	
Size	Bank 0
8MB	(1) 1M x 64
16MB	(1) 2M x 64
32MB	(1) 4M x 64
64MB	(1) 8M x 64

CACHE CONFIGURATION			
Size	Bank 0	SL1	TAG
256KB	(2) 32K x 32	Not installed	Unidentified
512KB	(2) 32K x 32	256KB module installed	Unidentified

Note: The location of bank 0 is unidentified.

CPU SPEED SELECTION (CYRIX)						
CPU speed	Clock speed	Multiplier	SW1/1	SW1/2	SW1/3	SW1/4
120MHz	50MHz	2x	On	Off	On	On
133MHz	55MHz	2x	On	Off	On	Off
150MHz	60MHz	2x	On	Off	Off	On
166MHz	66MHz	2x	On	Off	Off	Off

CPU SPEED SELECTION (AMD)						
CPU speed	Clock speed	Multiplier	SW1/1	SW1/2	SW1/3	SW1/4
75MHz	50MHz	1.5x	Off	Off	On	On
90MHz	60MHz	1.5x	Off	Off	Off	On
100MHz	66MHz	1.5x	Off	Off	Off	Off
100MHz	50MHz	1.5x	Off	Off	On	On
120MHz	60MHz	1.5x	Off	Off	Off	Off
133MHz	66MHz	1.5x	Off	Off	Off	Off
150MHz	60MHz	1.5x	Off	Off	Off	On
166MHz	66MHz	2x	On	Off	Off	Off

CPU SPEED SELECTION (INTEL)						
CPU speed	Clock speed	Multiplier	SW1/1	SW1/2	SW1/3	SW1/4
75MHz	50MHz	1.5x	Off	Off	On	On
90MHz	60MHz	1.5x	Off	Off	Off	On
100MHz	66MHz	1.5x	Off	Off	Off	Off
120MHz	60MHz	2x	On	Off	Off	On
125MHz	50MHz	2.5x	On	On	On	On
133MHz	66MHz	2x	On	Off	Off	Off
150MHz	60MHz	2.5x	On	On	Off	On
166MHz	66MHz	2.5x	On	On	Off	Off
180MHz	60MHz	3x	Off	On	Off	On
200MHz	66MHz	3x	Off	On	Off	Off