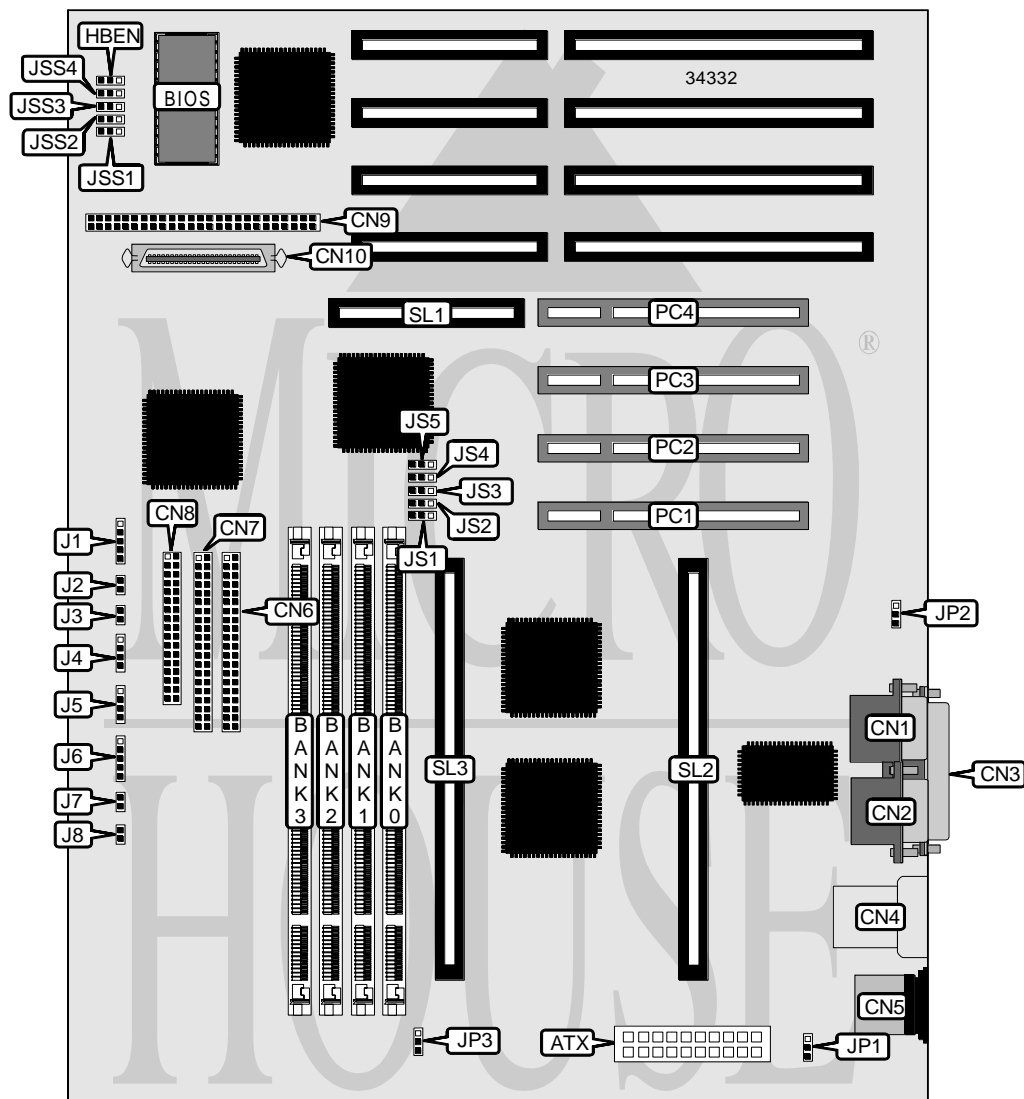


ADVANCED INTEGRATION RESEARCH, INC.

P 6 K D I

Processor	Pentium II
Processor Speed	180/200/233/266MHz
Chip Set	Intel
Video Chip Set	None
Maximum Onboard Memory	1GB (EDO supported)
Maximum Video Memory	None
Cache	256/512/1024KB (located on Pentium II CPU)
BIOS	AMI
Dimensions	305mm x 244mm
I/O Options	32-bit PCI slots (4), floppy drive interface, green PC connector, IDE interfaces (2), SCSI interface, Ultra-Wide SCSI interface, parallel port, PS/2 mouse port, serial ports (2), IR connector, USB connector, ATX power connector, RAID slot, CPU Slot 1 (2)
NPU Options	None



Continued on next page...

ADVANCED INTEGRATION RESEARCH, INC.

P 6 K D I

... continued from previous page

CONNECTIONS			
Purpose	Location	Purpose	Location
ATX power connector	ATX	Reset switch	J3
Serial port 2	CN1	Speaker	J4
Serial port 1	CN2	IDE interface LED	J5
Parallel port	CN3	Power LED & keylock	J6
USB connector	CN4	Turbo LED	J7
PS/2 mouse port	CN5	Soft off power supply	J8
IDE interface 1	CN6	Chassis fan power	JP1
IDE interface 2	CN7	Chassis fan power	JP2
Floppy drive interface	CN8	Chassis fan power	JP3
SCSI interface	CN9	32-bit PCI slots	PC1 – PC4
Ultra-Wide SCSI interface	CN10	RAID slot	SL1
IR connector	J1	CPU Slot 1	SL2
Green PC connector	J2	CPU Slot 1	SL3

USER CONFIGURABLE SETTINGS		
Function	Label	Position
í SCSI low byte enabled	HBEN	Pins 2 & 3 closed
SCSI high byte enabled	HBEN	Pins 1 & 2 closed

DIMM CONFIGURATION				
Size	Bank 0	Bank 1	Bank 2	Bank 3
8MB	(1) 1M x 64	None	None	None
16MB	(1) 1M x 64	(1) 1M x 64	None	None
16MB	(1) 2M x 64	None	None	None
24MB	(1) 1M x 64	(1) 1M x 64	(1) 1M x 64	None
32MB	(1) 1M x 64	(1) 1M x 64	(1) 1M x 64	(1) 1M x 64
32MB	(1) 2M x 64	(1) 2M x 64	None	None
32MB	(1) 4M x 64	None	None	None
48MB	(1) 2M x 64	(1) 2M x 64	(1) 2M x 64	None
64MB	(1) 2M x 64	(1) 2M x 64	(1) 2M x 64	(1) 2M x 64
64MB	(1) 4M x 64	(1) 4M x 64	None	None
64MB	(1) 8M x 64	None	None	None
96MB	(1) 4M x 64	(1) 4M x 64	(1) 4M x 64	None
128MB	(1) 4M x 64	(1) 4M x 64	(1) 4M x 64	(1) 4M x 64
128MB	(1) 8M x 64	(1) 8M x 64	None	None
128MB	(1) 16M x 64	None	None	None
192MB	(1) 8M x 64	(1) 8M x 64	(1) 8M x 64	None
256MB	(1) 8M x 64	(1) 8M x 64	(1) 8M x 64	(1) 8M x 64
256MB	(1) 16M x 64	(1) 16M x 64	None	None
256MB	(1) 32M x 64	None	None	None

Continued on next page. . .

ADVANCED INTEGRATION RESEARCH, INC.
P 6 K D I

... continued from previous page

DIMM CONFIGURATION (CON'T)				
Size	Bank 0	Bank 1	Bank 2	Bank 3
384MB	(1) 16M x 64	(1) 16M x 64	(1) 16M x 64	None
512MB	(1) 16M x 64	(1) 16M x 64	(1) 16M x 64	(1) 16M x 64
512MB	(1) 32M x 64	(1) 32M x 64	None	None
768MB	(1) 32M x 64	(1) 32M x 64	(1) 32M x 64	None
1GB	(1) 32M x 64	(1) 32M x 64	(1) 32M x 64	(1) 32M x 64

Note: Board accepts EDO memory. Board also accepts x 72 SIMMs.

CACHE CONFIGURATION
Note: 256KB/512KB cache is located on the Pentium II CPU.

CPU SPEED SELECTION					
CPU speed	JS1	JS2	JS3	JS4	JS5
180MHz	1 & 2	1 & 2	1 & 2	1 & 2	1 & 2
200MHz	2 & 3	2 & 3	2 & 3	2 & 3	1 & 2
233MHz	2 & 3	2 & 3	2 & 3	2 & 3	1 & 2
266MHz	2 & 3	2 & 3	2 & 3	2 & 3	1 & 2

Note: Pins designated should be in the closed position.

CPU SPEED SELECTION (CON'T)				
CPU speed	JSS1	JSS2	JSS3	JSS4
180MHz	1 & 2	2 & 3	1 & 2	1 & 2
200MHz	1 & 2	2 & 3	1 & 2	1 & 2
233MHz	2 & 3	2 & 3	1 & 2	1 & 2
266MHz	1 & 2	1 & 2	2 & 3	1 & 2

Note: Pins designated should be in the closed position.