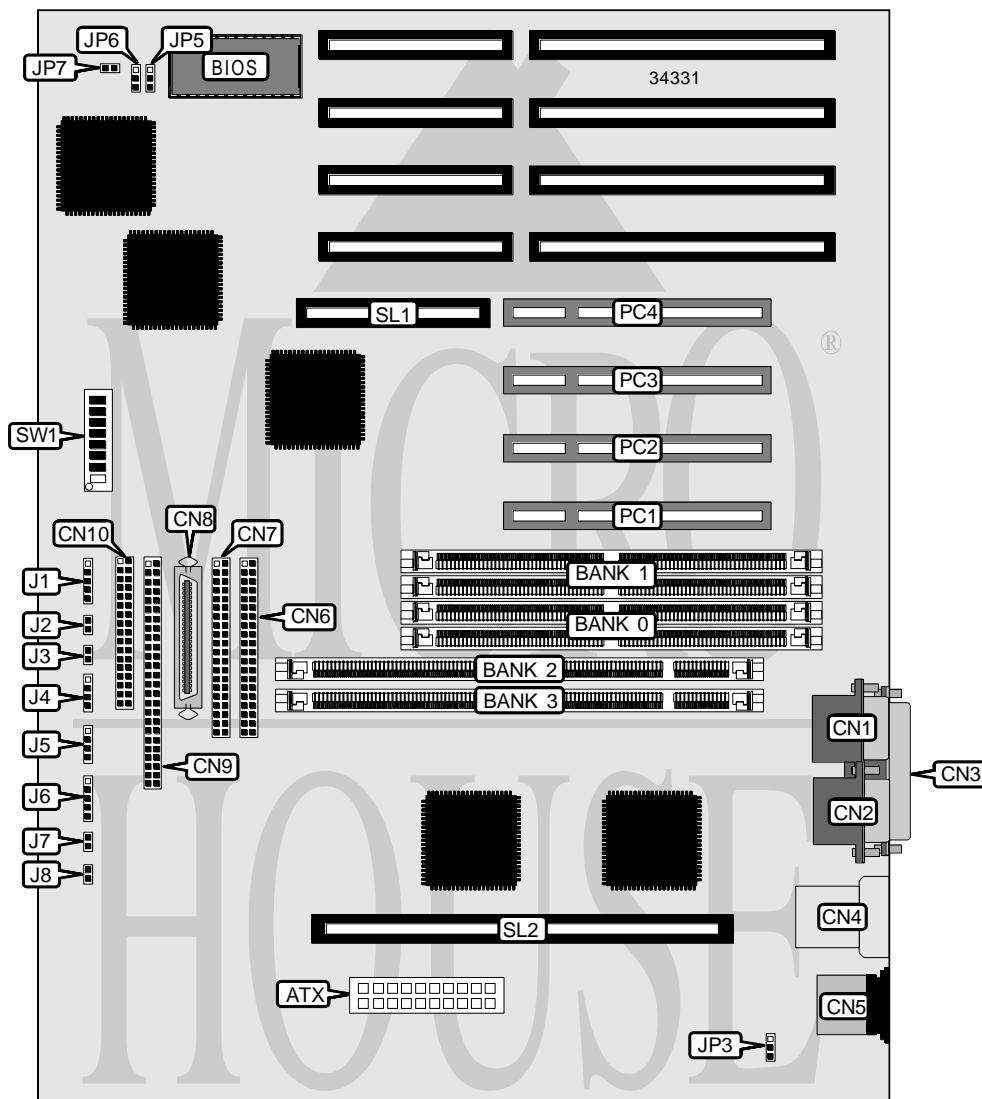


# ADVANCED INTEGRATION RESEARCH, INC.

## P 6 K P I

<b>Processor</b>	Pentium II
<b>Processor Speed</b>	180/200/233/266/300MHz
<b>Chip Set</b>	Intel
<b>Video Chip Set</b>	None
<b>Maximum Onboard Memory</b>	1GB (EDO supported)
<b>Maximum Video Memory</b>	None
<b>Cache</b>	256/512KB (located on Pentium II CPU)
<b>BIOS</b>	AMI
<b>Dimensions</b>	305mm x 244mm
<b>I/O Options</b>	32-bit PCI slots (4), floppy drive interface, green PC connector, IDE interfaces (2), SCSI interface, Ultra-Wide SCSI interface, parallel port, PS/2 mouse port, serial ports (2), IR connector, USB connector, ATX power connector, RAID slot, CPU Slot 1
<b>NPU Options</b>	None



Continued on next page...

# ADVANCED INTEGRATION RESEARCH, INC.

P 6 K P I

... continued from previous page

CONNECTIONS			
Purpose	Location	Purpose	Location
ATX power connector	ATX	Reset switch	J3
Serial port 2	CN1	Speaker	J4
Serial port 1	CN2	IDE interface LED	J5
Parallel port	CN3	Power LED & keylock	J6
USB connector	CN4	Turbo LED	J7
PS/2 mouse port	CN5	Soft off power supply	J8
IDE interface 1	CN6	Chassis fan power	JP3
IDE interface 2	CN7	Case fan power	JP5
Ultra-Wide SCSI interface	CN8	Case fan power	JP6
SCSI interface	CN9	Case sensor	JP7
Floppy drive interface	CN10	32-bit PCI slots	PC1 – PC4
IR connector	J1	RAID slot	SL1
Green PC connector	J2	CPU Slot 1	SL2

USER CONFIGURABLE SETTINGS		
Function	Label	Position
í SCSI low byte enabled	SW1/8	On
SCSI high byte enabled	SW1/8	Off

DIMM/DRAM CONFIGURATION				
Size	Bank 0	Bank 1	Bank 2	Bank 3
8MB	(2) 1M x 36	None	None	None
8MB	None	None	None	(1) 1M x 64
16MB	(2) 1M x 36	(2) 1M x 36	None	None
16MB	None	None	(1) 1M x 64	(1) 1M x 64
16MB	(2) 2M x 36	None	None	None
16MB	None	None	None	(1) 2M x 64
24MB	(2) 1M x 36	(2) 1M x 36	(1) 1M x 64	None
32MB	(2) 1M x 36	(2) 1M x 36	(1) 1M x 64	(1) 1M x 64
32MB	(2) 2M x 36	(2) 2M x 36	None	None
32MB	None	None	(1) 2M x 64	(1) 2M x 64
32MB	(2) 4M x 36	None	None	None
32MB	None	None	None	(1) 4M x 64
48MB	(2) 2M x 36	(2) 2M x 36	(1) 2M x 64	None
64MB	(2) 2M x 36	(2) 2M x 36	(1) 2M x 64	(1) 2M x 64
64MB	(2) 4M x 36	(2) 4M x 36	None	None
64MB	None	None	(1) 4M x 64	(1) 4M x 64
64MB	(2) 8M x 36	None	None	None
64MB	None	None	None	(1) 8M x 64
96MB	(2) 4M x 36	(2) 4M x 36	(1) 4M x 64	None
128MB	(2) 4M x 36	(2) 4M x 36	(1) 4M x 64	(1) 4M x 64
128MB	(2) 8M x 36	(2) 8M x 36	None	None

Continued on next page...

# ADVANCED INTEGRATION RESEARCH, INC.

P 6 K P I

... continued from previous page

DIMM/DRAM CONFIGURATION (CON'T)				
Size	Bank 0	Bank 1	Bank 2	Bank 3
128MB	None	None	(1) 8M x 64	(1) 8M x 64
128MB	(2) 16M x 36	None	None	None
128MB	None	None	None	(1) 16M x 64
192MB	(2) 8M x 36	(2) 8M x 36	(1) 8M x 64	None
256MB	(2) 8M x 36	(2) 8M x 36	(1) 8M x 64	(1) 8M x 64
256MB	(2) 16M x 36	(2) 16M x 36	None	None
256MB	None	None	(1) 16M x 64	(1) 16M x 64
256MB	(2) 32M x 36	None	None	None
384MB	(2) 16M x 36	(2) 16M x 36	(1) 16M x 64	None
512MB	(2) 16M x 36	(2) 16M x 36	(1) 16M x 64	(1) 16M x 64
512MB	(2) 32M x 36	(2) 32M x 36	None	None
768MB	(2) 32M x 36	(2) 32M x 36	(1) 32M x 64	None
1GB	(2) 32M x 36	(2) 32M x 36	(1) 32M x 64	(1) 32M x 64

Note: Board accepts EDO memory. Board also accepts non-parity SIMMs & DIMMs.

CACHE CONFIGURATION
Note: 256KB/512KB cache is located on the Pentium II CPU.

CPU SPEED SELECTION							
Speed	SW1/1	SW1/2	SW1/3	SW1/4	SW1/5	SW1/6	SW1/7
180MHz	Off	Off	Off	On	Off	On	On
200MHz	On	On	Off	On	Off	On	On
233MHz	On	On	Off	Off	Off	On	On
266MHz	On	On	Off	On	On	Off	On
300MHz	On	On	Off	Off	On	Off	On