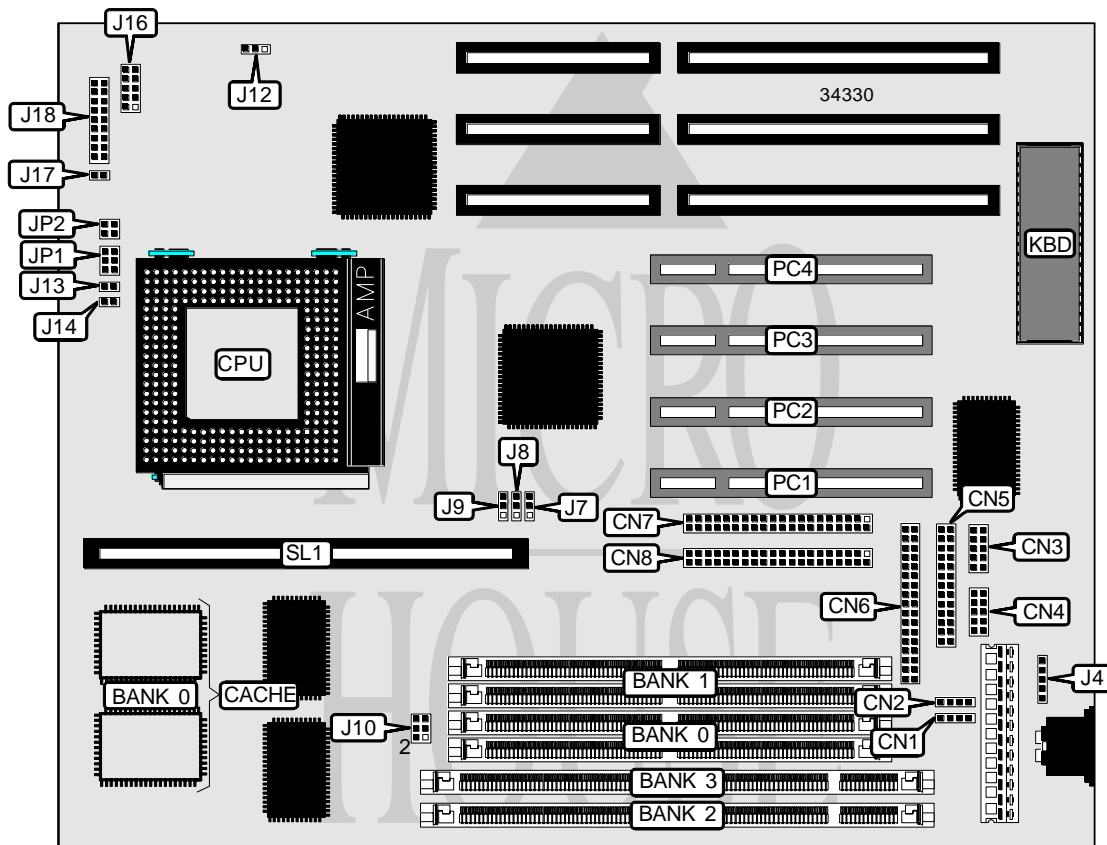


# ADVANCED INTEGRATION RESEARCH, INC.

## 54TVP-III

<b>Processor</b>	CX M1/AM K5/Pentium
<b>Processor Speed</b>	75/90/100/120/133/150/166/200/233MHz
<b>Chip Set</b>	Intel
<b>Video Chip Set</b>	None
<b>Maximum Onboard Memory</b>	128MB (EDO supported)
<b>Maximum Video Memory</b>	None
<b>Cache</b>	256/512KB
<b>BIOS</b>	Award
<b>Dimensions</b>	280mm x 220mm
<b>I/O Options</b>	32-bit PCI slots (4), floppy drive interface, green PC connector, IDE interfaces (2), parallel port, PS/2 mouse interface, serial ports (2), cache slot, IR connector, USB connectors (2)
<b>NPU Options</b>	None



Continued on next page. . .

# ADVANCED INTEGRATION RESEARCH, INC.

## 54TVP-III

... continued from previous page

CONNECTIONS			
Purpose	Location	Purpose	Location
USB connector	CN1	IR connector	J16
USB connector	CN2	Power LED & keylock	J18/pins 1 - 5
Serial port 2	CN3	IDE interface LED	J18/pins 6 & 13
Serial port 1	CN4	Green PC connector	J18/pins 7 & 12
Parallel port	CN5	Reset switch	J18/pins 8 & 11
Floppy drive interface	CN6	Turbo LED	J18/pins 9 & 10
IDE interface 2	CN7	Speaker	J18/pins 15 - 18
IDE interface 1	CN8	32-bit PCI slots	PC1 - PC4
PS/2 mouse interface	J4	Cache slot	SL1

USER CONFIGURABLE SETTINGS		
Function	Label	Position
Flash BIOS voltage select 12v	J12	Pins 1 & 2 closed
Flash BIOS voltage select 5v	J12	Pins 2 & 3 closed

DIMM/DRAM CONFIGURATION				
Size	Bank 0	Bank 1	Bank 2	Bank 3
8MB	(2) 1M x 36	None	None	None
8MB	None	None	(1) 1M x 64	None
16MB	(2) 2M x 36	None	None	None
16MB	None	None	(1) 2M x 64	None
16MB	(2) 1M x 36	(2) 1M x 36	None	None
16MB	(2) 1M x 36	None	None	(1) 1M x 64
16MB	None	None	(1) 1M x 64	(1) 1M x 64
24MB	None	(2) 2M x 36	(1) 1M x 64	None
32MB	(2) 4M x 36	None	None	None
32MB	None	None	(1) 4M x 64	None
32MB	(2) 2M x 36	None	None	(1) 2M x 64
40MB	(2) 4M x 36	(2) 1M x 36	None	None
40MB	(2) 4M x 36	None	None	(1) 1M x 64
48MB	(2) 2M x 36	None	None	(1) 4M x 64
48MB	(2) 4M x 36	(2) 2M x 36	None	None
64MB	(2) 8M x 36	None	None	None
64MB	None	None	None	(1) 8M x 64
64MB	(2) 4M x 36	(2) 4M x 36	None	None
64MB	(2) 4M x 36	None	None	(1) 4M x 64
64MB	None	None	(1) 4M x 64	(1) 4M x 64
72MB	(2) 8M x 36	(2) 1M x 36	None	None

Continued on next page. . .

ADVANCED INTEGRATION RESEARCH, INC.  
54TVP-III

... continued from previous page

DIMM/DRAM CONFIGURATION (CON'T)				
Size	Bank 0	Bank 1	Bank 2	Bank 3
72MB	(2) 8M x 36	None	None	(1) 1M x 64
80MB	None	(2) 2M x 36	(1) 8M x 64	None
80MB	(2) 8M x 36	(2) 2M x 36	None	None
80MB	(2) 8M x 36	None	None	(1) 2M x 64
96MB	(2) 4M x 36	None	None	(1) 8M x 64
96MB	(2) 8M x 36	(2) 4M x 36	None	None
128MB	None	None	(1) 8M x 64	(1) 8M x 64
128MB	(2) 8M x 36	(2) 8M x 36	None	None
128MB	(2) 8M x 36	None	None	(1) 8M x 64

Note: Board accepts EDO memory.

DIMM VOLTAGE CONFIGURATION	
Voltage	J10
3.3v	Pins 1 & 3, 2 & 4 closed
5v	Pins 3 & 5, 4 & 6 closed

CACHE CONFIGURATION			
Size	Bank 0	SL1	TAG
256KB	(2) 32K x 32	Not installed	(1) 8K x 8
256KB	None	256KB module installed	None
512KB	(2) 32K x 32	256KB module installed	(1) 16K x 8
512KB	(2) 64K x 32	Not installed	(1) 16K x 8
512KB	None	512KB module installed	None

Note: The location of the TAG is unidentified.

CPU SPEED SELECTION (CYRIX)						
CPU speed	Clock speed	Multiplier	J7	J8	J9	J13
120MHz	50MHz	2x	1 & 2	1 & 2	1 & 2	Open
133MHz	55MHz	2x	1 & 2	1 & 2	2 & 3	Open
150MHz	60MHz	2x	2 & 3	1 & 2	1 & 2	Open
166MHz	66MHz	2x	1 & 2	2 & 3	1 & 2	Open
200MHz	75MHz	2x	2 & 3	1 & 2	2 & 3	Open

Note: Pins designated should be in the closed position.

CPU SPEED SELECTION (CYRIX, CON'T)					
CPU speed	Clock speed	Multiplier	J14	JP1	JP2
120MHz	50MHz	2x	Closed	3 & 4	3 & 4
133MHz	55MHz	2x	Closed	3 & 4	3 & 4
150MHz	60MHz	2x	Closed	3 & 4	3 & 4
166MHz	66MHz	2x	Closed	3 & 4	3 & 4
200MHz	75MHz	2x	Closed	3 & 4	3 & 4

Note: Pins designated should be in the closed position.

Continued on next page...

ADVANCED INTEGRATION RESEARCH, INC.  
54TVP-III

... continued from previous page

CPU SPEED SELECTION (AMD)						
CPU speed	Clock speed	Multiplier	J7	J8	J9	J13
75MHz	50MHz	1.5x	1 & 2	1 & 2	1 & 2	Open
90MHz	60MHz	1.5x	2 & 3	1 & 2	1 & 2	Open
100MHz	66MHz	1.5x	1 & 2	2 & 3	1 & 2	Open
120MHz	60MHz	2x	2 & 3	1 & 2	1 & 2	Open
133MHz	66MHz	1.5x	1 & 2	2 & 3	1 & 2	Open
150MHz	60MHz	2.5x	2 & 3	1 & 2	1 & 2	Closed
166MHz	66MHz	2.5x	1 & 2	2 & 3	1 & 2	Closed

Note: Pins designated should be in the closed position.

CPU SPEED SELECTION (AMD, CON'T)					
CPU speed	Clock speed	Multiplier	J14	JP1	JP2
75MHz	50MHz	1.5x	Open	3 & 4	3 & 4
90MHz	60MHz	1.5x	Open	3 & 4	3 & 4
100MHz	66MHz	1.5x	Open	3 & 4	3 & 4
120MHz	60MHz	2x	Open	3 & 4	3 & 4
133MHz	66MHz	2x	Open	3 & 4	3 & 4
150MHz	60MHz	2.5x	Closed	3 & 4	3 & 4
166MHz	66MHz	2.5x	Closed	3 & 4	3 & 4

Note: Pins designated should be in the closed position.

CPU SPEED SELECTION (INTEL)						
CPU speed	Clock speed	Multiplier	J7	J8	J9	J13
75MHz	50MHz	1.5x	1 & 2	1 & 2	1 & 2	Open
90MHz	60MHz	1.5x	2 & 3	1 & 2	1 & 2	Open
100MHz	66MHz	1.5x	1 & 2	2 & 3	1 & 2	Open
120MHz	60MHz	2x	2 & 3	1 & 2	1 & 2	Open
133MHz	66MHz	2x	1 & 2	2 & 3	1 & 2	Open
150MHz	60MHz	2.5x	2 & 3	1 & 2	1 & 2	Closed
150MHz	75MHz	2x	2 & 3	1 & 2	2 & 3	Open
166MHz	83MHz	2x	1 & 2	2 & 3	2 & 3	Open
166MHz	66MHz	2.5x	1 & 2	2 & 3	1 & 2	Closed
200MHz	66MHz	3x	1 & 2	2 & 3	1 & 2	Closed
233MHz	66MHz	3.5x	1 & 2	2 & 3	1 & 2	Open

Note: Pins designated should be in the closed position.

Continued on next page...

ADVANCED INTEGRATION RESEARCH, INC.  
54TVP-III

... continued from previous page

CPU SPEED SELECTION (INTEL, CON'T)					
CPU speed	Clock speed	Multiplier	J14	JP1	JP2
75MHz	50MHz	1.5x	Open	5 & 6	3 & 4
90MHz	60MHz	1.5x	Open	5 & 6	3 & 4
100MHz	66MHz	1.5x	Open	5 & 6	3 & 4
120MHz	60MHz	2x	Closed	5 & 6	3 & 4
133MHz	66MHz	2x	Closed	5 & 6	3 & 4
150MHz	60MHz	2.5x	Closed	5 & 6	3 & 4
150MHz	75MHz	2x	Closed	5 & 6	3 & 4
166MHz	83MHz	2x	Closed	5 & 6	3 & 4
166MHz	66MHz	2.5x	Closed	5 & 6	3 & 4
200MHz	66MHz	3x	Open	5 & 6	3 & 4
233MHz	66MHz	3.5x	Open	5 & 6	3 & 4

Note: Pins designated should be in the closed position.