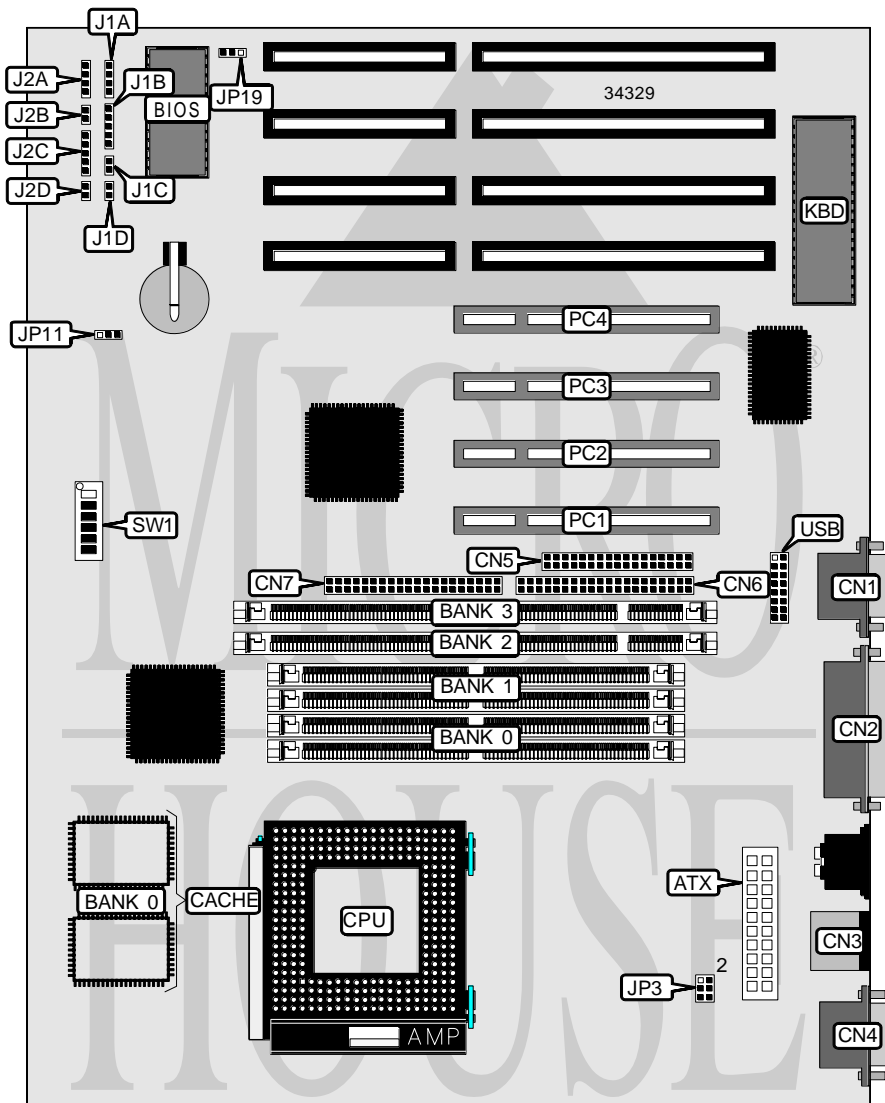


ADVANCED INTEGRATION RESEARCH, INC.

55TX-I

Processor	CX M1/CX M2/AM K5/AM K6/Pentium
Processor Speed	90/100/120/133/150/166/180/200/233/266/300/333/ 366MHz
Chip Set	Intel
Video Chip Set	None
Maximum Onboard Memory	256MB (EDO supported)
Maximum Video Memory	None
Cache	256/512KB
BIOS	Award
Dimensions	304mm x 215mm
I/O Options	32-bit PCI slots (4), floppy drive interface, green PC connector, IDE interfaces (2), parallel port, PS/2 mouse port, serial ports (2), IR connector, USB connector, ATX power connector
NPU Options	None



Continued on next page . . .

ADVANCED INTEGRATION RESEARCH, INC.

55TX-I

... continued from previous page

CONNECTIONS			
Purpose	Location	Purpose	Location
ATX power connector	ATX	IR connector	J1B
Serial port 2	CN1	Soft off power supply	J1C
Parallel port	CN2	Green PC connector	J1D
PS/2 mouse port	CN3	Speaker	J2A
Serial port 1	CN4	Reset switch	J2B
Floppy drive interface	CN5	Power LED & keylock	J2C
IDE interface 2	CN6	Turbo LED	J2D
IDE interface 1	CN7	32-bit PCI slots	PC1 – PC4
IDE interface LED	J1A	USB connector	USB

USER CONFIGURABLE SETTINGS		
Function	Label	Position
í CMOS memory normal operation	JP11	Pins 2 & 3 closed
CMOS memory clear	JP11	Pins 1 & 2 closed
Flash BIOS programming disabled	JP19	Pins 1 & 2 closed
Flash BIOS programming enabled	JP19	Pins 2 & 3 closed
í Factory configured - do not alter	SW1/6	Unidentified

DIMM/DRAM CONFIGURATION				
Size	Bank 0	Bank 1	Bank 2	Bank 3
4MB	(2) 512K x 36	None	None	None
8MB	(2) 1M x 36	None	None	None
8MB	None	None	(1) 1M x 64	None
16MB	(2) 2M x 36	None	None	None
16MB	None	None	(1) 2M x 64	None
16MB	(2) 1M x 36	(2) 1M x 36	None	None
16MB	(2) 1M x 36	None	(1) 1M x 64	None
16MB	None	None	(1) 1M x 64	(1) 1M x 64
24MB	None	(2) 2M x 36	(1) 1M x 64	None
32MB	(2) 4M x 36	None	None	None
32MB	None	None	(1) 4M x 64	None
32MB	(2) 2M x 36	None	(1) 2M x 64	None
40MB	(2) 4M x 36	(2) 1M x 36	None	None
40MB	(2) 4M x 36	None	(1) 1M x 64	None
48MB	(2) 2M x 36	None	(1) 4M x 64	None
48MB	(2) 4M x 36	(2) 2M x 36	None	None
48MB	(2) 4M x 36	None	(1) 2M x 64	None
64MB	(2) 8M x 36	None	None	None
64MB	None	None	None	(1) 8M x 64
64MB	(2) 4M x 36	(2) 4M x 36	None	None

Continued on next page. . .

ADVANCED INTEGRATION RESEARCH, INC.
55TX-I

... continued from previous page

DIMM/DRAM CONFIGURATION (CON'T)				
Size	Bank 0	Bank 1	Bank 2	Bank 3
64MB	(2) 4M x 36	None	(1) 4M x 64	None
64MB	None	None	(1) 4M x 64	(1) 4M x 64
72MB	(2) 8M x 36	(2) 1M x 36	None	None
72MB	(2) 8M x 36	None	(1) 1M x 64	None
80MB	None	(2) 2M x 36	(1) 8M x 64	None
80MB	(2) 8M x 36	(2) 2M x 36	None	None
96MB	(2) 4M x 36	None	(1) 8M x 64	None
96MB	(2) 8M x 36	(2) 4M x 36	None	None
96MB	None	(2) 8M x 36	(1) 4M x 64	None
128MB	(2) 8M x 36	None	(1) 8M x 64	None
128MB	None	None	(1) 8M x 64	(1) 8M x 64
128MB	(2) 8M x 36	(2) 8M x 36	None	None
128MB	(2) 16M x 36	None	None	None
136MB	(2) 16M x 36	(2) 1M x 36	None	None
136MB	(2) 16M x 36	None	(1) 1M x 64	None
144MB	(2) 16M x 36	None	(1) 2M x 64	None
144MB	(2) 16M x 36	(2) 2M x 36	None	None
160MB	(2) 16M x 36	(2) 4M x 36	None	None
160MB	(2) 16M x 36	None	(1) 4M x 64	None
192MB	(2) 16M x 36	None	(1) 8M x 64	None
192MB	(2) 16M x 36	(2) 8M x 36	None	None
256MB	(2) 16M x 36	(2) 16M x 36	None	None

Note: Board accepts EDO memory.

CACHE CONFIGURATION	
Size	Bank 0
256KB	(2) 32K x 32
512KB	(2) 64K x 32

CPU SPEED SELECTION (CYRIX M1)							
CPU speed	Clock speed	Multiplier	SW1/1	SW1/2	SW1/3	SW1/4	SW1/5
133MHz	55MHz	2x	Off	On	Off	Off	On
150MHz	60MHz	2x	Off	On	Off	On	On
166MHz	66MHz	2x	Off	On	On	On	On
200MHz	75MHz	2x	Off	On	On	Off	On

Continued on next page...

ADVANCED INTEGRATION RESEARCH, INC.

55TX-I

... continued from previous page

CPU SPEED SELECTION (CYRIX M1)							
CPU speed	Clock speed	Multiplier	SW1/1	SW1/2	SW1/3	SW1/4	SW1/5
133MHz	55MHz	2x	Off	On	Off	Off	On
150MHz	60MHz	2x	Off	On	Off	On	On
166MHz	66MHz	2x	Off	On	On	On	On
200MHz	75MHz	2x	Off	On	On	Off	On

CPU SPEED SELECTION (CYRIX M2)							
CPU speed	Clock speed	Multiplier	SW1/1	SW1/2	SW1/3	SW1/4	SW1/5
166MHz	66MHz	2.5x	Off	Off	On	On	On
200MHz	66MHz	3x	On	Off	On	On	On
233MHz	66MHz	3.5x	On	On	On	On	On

CPU SPEED SELECTION (AMD K5)							
CPU speed	Clock speed	Multiplier	SW1/1	SW1/2	SW1/3	SW1/4	SW1/5
90MHz	60MHz	1.5x	On	On	Off	On	On
100MHz	66MHz	1.5x	On	On	On	On	On
120MHz	60MHz	2x	Off	On	Off	On	On
133MHz	66MHz	2x	Off	On	On	On	On
150MHz	60MHz	2.5x	Off	Off	Off	On	On
166MHz	66MHz	2.5x	Off	Off	On	On	On

CPU SPEED SELECTION (AMD K6)							
CPU speed	Clock speed	Multiplier	SW1/1	SW1/2	SW1/3	SW1/4	SW1/5
166MHz	66MHz	2.5x	Off	Off	On	On	On
200MHz	66MHz	3x	On	Off	On	On	On
233MHz	66MHz	3.5x	On	On	On	On	On
266MHz	66MHz	4x	Off	On	On	On	Off
300MHz	66MHz	4.5x	Off	Off	On	On	Off
333MHz	66MHz	5x	On	Off	On	On	Off
366MHz	66MHz	5.5x	On	On	On	On	Off

CPU SPEED SELECTION (INTEL)							
CPU speed	Clock speed	Multiplier	SW1/1	SW1/2	SW1/3	SW1/4	SW1/5
90MHz	60MHz	1.5x	On	On	Off	On	On
100MHz	66MHz	1.5x	On	On	On	On	On
120MHz	60MHz	2x	Off	On	Off	On	On
133MHz	66MHz	2x	Off	On	On	On	On
150MHz	60MHz	2.5x	Off	Off	Off	On	On
166MHz	66MHz	2.5x	Off	Off	On	On	On
180MHz	60MHz	3x	On	Off	Off	On	On
200MHz	66MHz	3x	On	Off	On	On	On
233MHz	66MHz	3.5x	On	On	On	On	On

Continued on next page. . .

ADVANCED INTEGRATION RESEARCH, INC.
55TX-I

... continued from previous page

CPU VOLTAGE SELECTION	
Voltage	JP3
2.8v	Open
2.9v	Pins 1 & 2 closed
3.0v	Pins 3 & 4 closed
3.1v	Pins 1 & 2, 3 & 4, closed
3.2v	Pins 5 & 6 closed
3.3v	Pins 1 & 2, 5 & 6 closed
3.4v	Pins 3 & 4, 5 & 6 closed
3.5v	Pins 1 & 2, 3 & 4, 5 & 6 closed