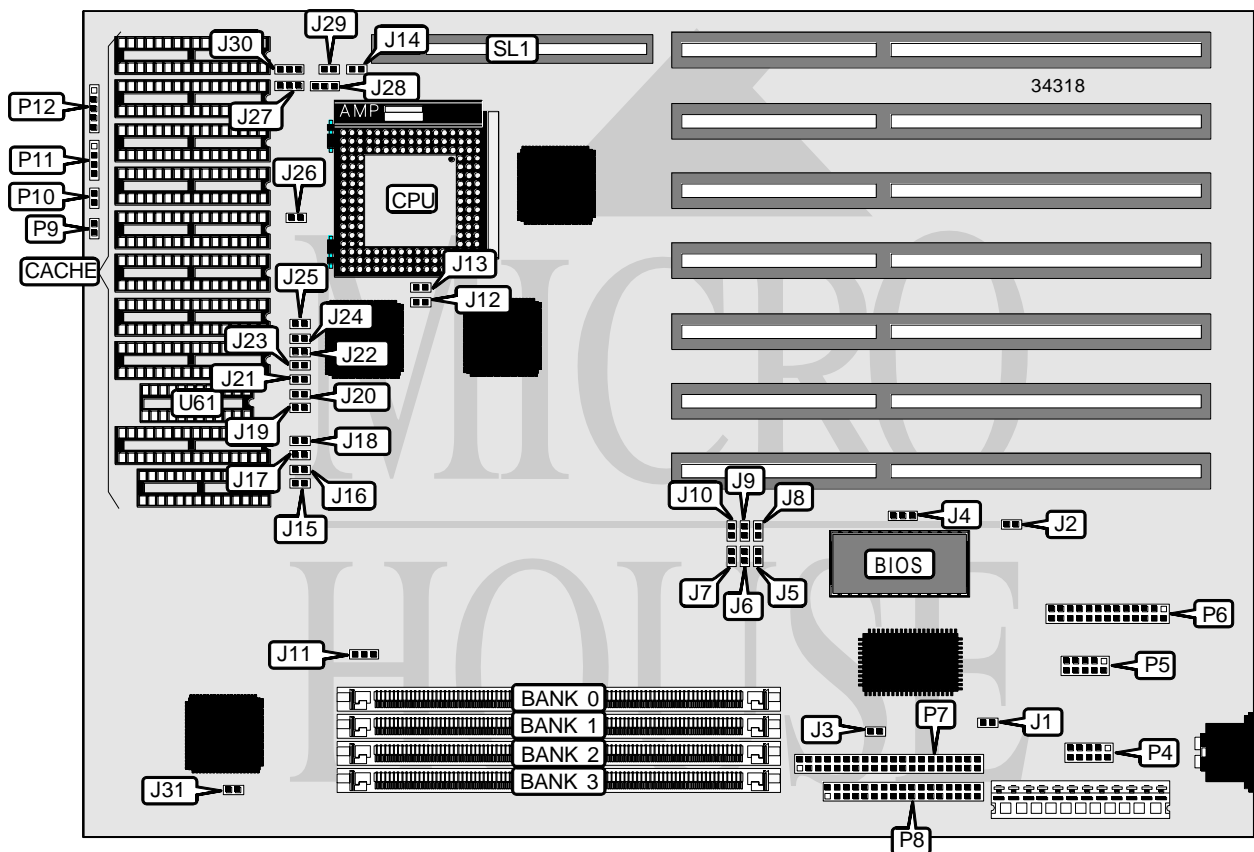


COMPUDYNE

UTD 4800AIO EISA VESA ZIF

Processor	80486DX/80486DX2
Processor Speed	25/33/40/50(internal)/50/66(internal)MHz
Chip Set	OPTI
Video Chip Set	None
Maximum Onboard Memory	Unidentified
Maximum Video Memory	None
Cache	64/128/256/512/1024KB
BIOS	Unidentified
Dimensions	330mm x 218mm
I/O Options	32-bit VESA local bus slot, floppy drive interface, IDE interface, parallel port, serial ports (2)
NPU Options	None



Continued on next page . . .

COMPUDYNE

UTD 4800AIO EISA VESA ZIF

... continued from previous page

CONNECTIONS			
Purpose	Location	Purpose	Location
Serial port 1	P4	Reset switch	P9
Serial port 2	P5	IDE interface LED	P10
Parallel port	P6	Speaker	P11
IDE interface	P7	Power LED & keylock	P12
Floppy drive interface	P8	32-bit VESA local bus slot	SL1

USER CONFIGURABLE SETTINGS		
Function	Label	Position
í IDE I/O channel RDY signal select none	J1	Open
IDE I/O channel RDY signal select drive	J1	Closed
í Flash BIOS programming disabled	J2	Open
Flash BIOS programming enabled	J2	Closed
í Factory configured - do not alter	J3	Unidentified
í Factory configured - do not alter	J4	Unidentified
í ISA BUS ready timing ISA RDY	J26	Open
ISA BUS ready timing EISA RDY	J26	Closed
í READY RTN generation select local bus	J28	Pins 1 & 2 closed
READY RTN generation select system	J28	Pins 2 & 3 closed
í VL BUS not delayed	J29	Closed
VL BUS delayed	J29	Open
í Monitor type select color	J31	Closed
Monitor type select monochrome	J31	Open

DRAM CONFIGURATION
Note: The maximum amount of memory is unidentified.

CACHE CONFIGURATION				
Size	Bank 0	Bank 1	TAG (U61)	TAG
64KB	(4) 8K x 8	(4) 8K x 8	(1) 64K x 1	Unidentified
128KB	(4) 32K x 8	None	(1) 64K x 1	Unidentified
256KB	(4) 32K x 8	(4) 32K x 8	(1) 64K x 1	Unidentified
512KB	(4) 64K x 8	(4) 64K x 8	(1) 64K x 1	Unidentified
1MB	(4) 128K x 8	(4) 128K x 8	(1) 64K x 1	Unidentified

Note: The location of banks 0 & 1 is unidentified.

CACHE JUMPER CONFIGURATION					
Size	J19	J20	J21	J22	J23
64KB	Open	Open	Open	Open	Open
128KB	Open	Closed	Open	Open	Open
256KB	Closed	Closed	Open	Open	Open
512KB	Closed	Closed	Closed	Open	Closed
1MB	Closed	Closed	Closed	Closed	Closed

Continued on next page. . .

COMPUDYNE
 UTD 4800AIO EISA VESA ZIF

... continued from previous page

CACHE JUMPER CONFIGURATION(CON'T)				
Size	J24	J25	J27	J30
64KB	Open	Open	Pins 2 & 3 closed	Pins 2 & 3 closed
128KB	Open	Closed	Pins 1 & 2 closed	Pins 1 & 2 closed
256KB	Closed	Closed	Pins 2 & 3 closed	Pins 2 & 3 closed
512KB	Closed	Closed	Pins 1 & 2 closed	Pins 1 & 2 closed
1MB	Closed	Closed	Pins 2 & 3 closed	Pins 2 & 3 closed

CPU SPEED SELECTION							
Speed	J11	J12	J13	J15	J16	J17	J18
25MHz	2 & 3	Open	Open	Closed	Open	Open	Closed
33MHz	2 & 3	Closed	Open	Closed	Open	Open	Open
40MHz	2 & 3	Open	Closed	Open	Open	Open	Closed
50iMHz	2 & 3	Open	Open	Closed	Open	Open	Closed
50MHz	1 & 2	Closed	Closed	Closed	Open	Open	Closed
66iMHz	2 & 3	Closed	Open	Closed	Open	Open	Open

Note: Pins designated should be in the closed position.

DMA CHANNEL SELECTION						
Channel	J5	J6	J7	J8	J9	J10
5	Open	Open	Closed	Closed	Open	Open
6	Open	Closed	Open	Open	Closed	Open
7	Closed	Open	Open	Open	Open	Closed

VL BUS WAIT STATE SELECTION	
Setting	J14
0	Open
1	Closed