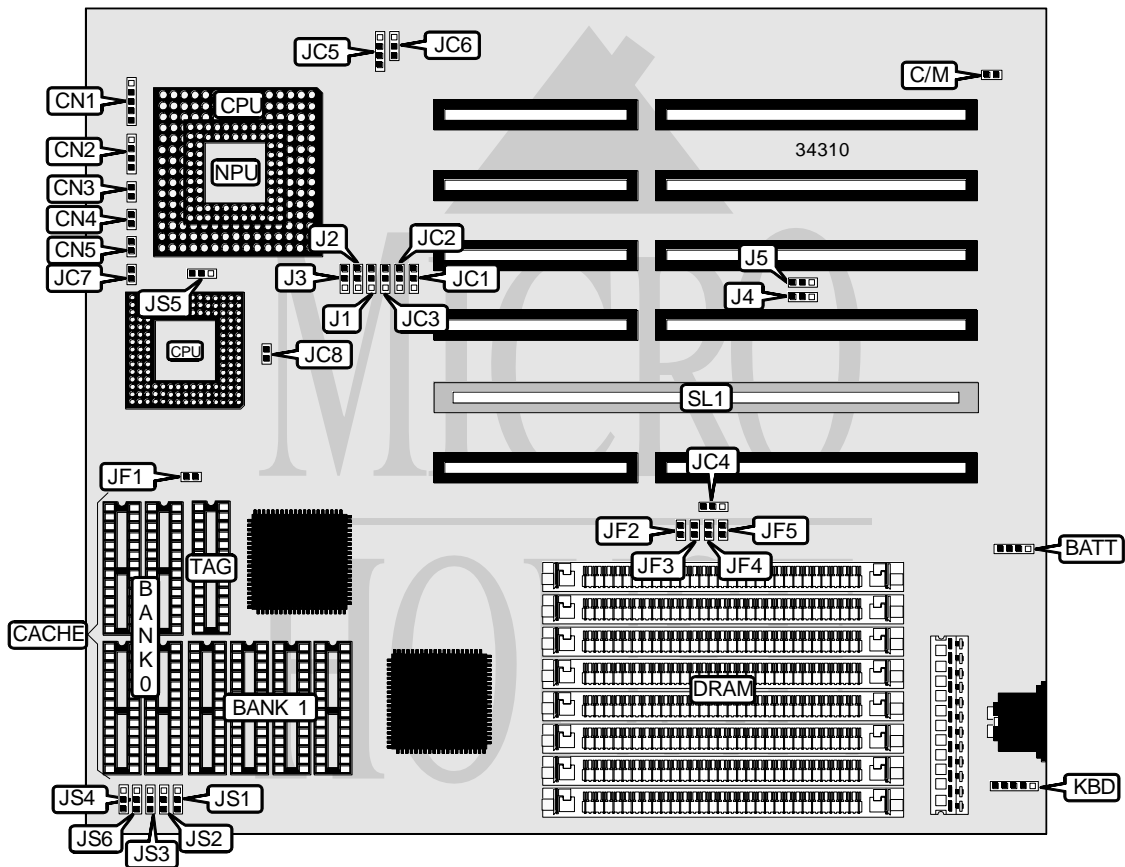


UNIDENTIFIED BC3486UL

Processor	80386DX/CX486DLC/80486SX/80487SX/ODP487SX/80486DX/ 80486DX2
Processor Speed	20/25/33/40/50(internal)/50/66(internal)MHz
Chip Set	UMC
Video Chip Set	None
Maximum Onboard Memory	32MB
Maximum Video Memory	None
Cache	64/128/256KB
BIOS	AMI
Dimensions	254mm x 218mm
I/O Options	Local bus slot
NPU Options	80387DX/CX83D87



Continued on next page . . .

UNIDENTIFIED
BC3486UL

... continued from previous page

CONNECTIONS			
Purpose	Location	Purpose	Location
External battery	BATT	Turbo switch	CN4
Power LED & keylock	CN1	Turbo LED	CN5
Speaker	CN2	Auxiliary keyboard connector	KBD
Reset switch	CN3	Local bus slot	SL1

USER CONFIGURABLE SETTINGS		
Function	Label	Position
Battery type select internal	BATT	Pins 2 & 3 closed
Battery type select external	BATT	Closed
CMOS memory clear	BATT	Pins 3 & 4 closed
Monitor type select color	C/M	Closed
Monitor type select monochrome	C/M	Open

DRAM CONFIGURATION		
Size	Bank 0	Bank 1
1MB	(4) 256K x 9	None
2MB	(4) 256K x 9	(4) 256K x 9
4MB	(4) 1M x 9	None
5MB	(4) 256K x 9	(4) 1M x 9
8MB	(4) 1M x 9	(4) 1M x 9
16MB	(4) 4M x 9	None
20MB	(4) 1M x 9	(4) 4M x 9
32MB	(4) 4M x 9	(4) 4M x 9

Note: The location of banks 0 & 1 is unidentified.

CACHE CONFIGURATION			
Size	Bank 0	Bank 1	TAG
64KB	(4) 8K x 8	(4) 8K x 8	(1) 8K x 8
128KB	(4) 32K x 8	None	(1) 8K x 8
256KB	(4) 32K x 8	(4) 32K x 8	(1) 32K x 8

CACHE JUMPER CONFIGURATION						
Size	JS1	JS2	JS3	JS4	JS5	JS6
64KB	1 & 2	1 & 2	1 & 2	1 & 2	1 & 2	2 & 3
128KB	2 & 3	2 & 3	2 & 3	1 & 2	1 & 2	1 & 2
256KB	2 & 3	2 & 3	1 & 2	2 & 3	2 & 3	2 & 3

Note: Pins designated should be in the closed position.

CPU SPEED SELECTION (80386)					
Speed	JF1	JF2	JF3	JF4	JF5
25MHz	Open	Closed	Closed	Closed	Open
33MHz	Open	Open	Closed	Closed	Closed
40MHz	Open	Closed	Open	Closed	Closed

Continued on next page...

UNIDENTIFIED
BC3486UL

... continued from previous page

CPU SPEED SELECTION (80486)					
Speed	JF1	JF2	JF3	JF4	JF5
20MHz	Closed	Closed	Open	Open	Closed
25MHz	Open	Closed	Closed	Open	Closed
33MHz	Open	Open	Closed	Open	Closed
50iMHz	Open	Closed	Closed	Open	Closed
50MHz	Open	Open	Open	Open	Open
66iMHz	Open	Open	Closed	Open	Open

CPU TYPE SELECTION				
Type	JC1	JC2	JC3	JC4
80386	Pins 2 & 3 closed	Pins 2 & 3 closed	Pins 2 & 3 closed	Pins 2 & 3 closed
CX486DLC	Pins 2 & 3 closed	Pins 2 & 3 closed	Pins 2 & 3 closed	Pins 2 & 3 closed
80486	Pins 1 & 2 closed	Pins 1 & 2 closed	Pins 1 & 2 closed	Pins 1 & 2 closed

CPU TYPE SELECTION (80486 ONLY)		
Type	JC5	J6C
80486SX	Pins 2 & 3 closed	Open
80487SX	Pins 1 & 2, 3 & 4 closed	Pins 2 & 3 closed
ODP487SX	Pins 1 & 2, 3 & 4 closed	Pins 2 & 3 closed
80486DX	Pins 1 & 2, 3 & 4 closed	Pins 1 & 2 closed
80486DX2	Pins 1 & 2, 3 & 4 closed	Pins 1 & 2 closed

NPU SELECTION		
Setting	JC7	JC8
NPU not installed	Open	Open
NPU installed	Closed	Closed

LOCAL BUS SLOT SELECTION			
Setting	J1	J2	J3
Normal ISA cards installed	Pins 2 & 3 closed	Pins 2 & 3 closed	Pins 2 & 3 closed
Local Bus cards installed	Pins 1 & 2 closed	Pins 1 & 2 closed	Pins 1 & 2 closed

LOCAL BUS CARD INSTALLED SELECTION		
CPU installed	J4	J5
80386	Pins 2 & 3 closed	Pins 2 & 3 closed
80486DX-50	Pins 2 & 3 closed	Pins 2 & 3 closed
All CPU types	Pins 1 & 2 closed	Pins 1 & 2 closed