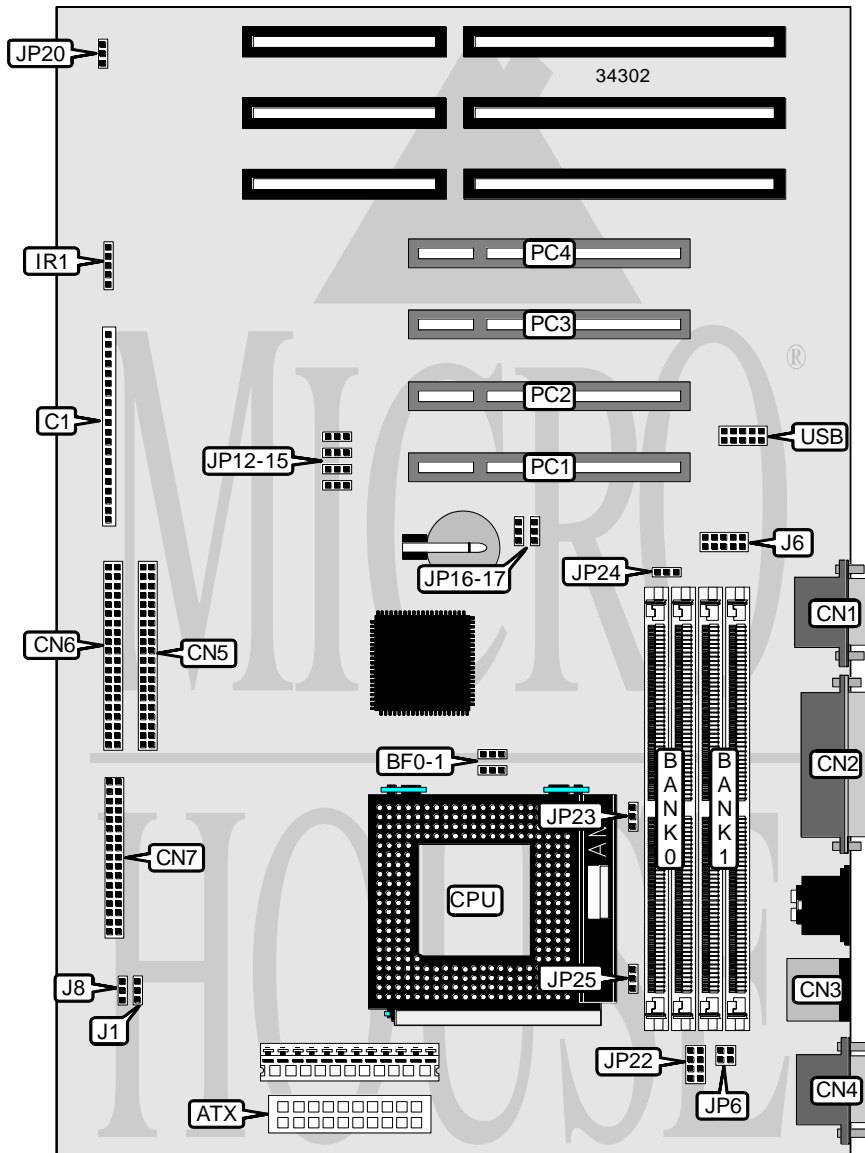


# ELITEGROUP COMPUTER SYSTEMS, INC.

## P 5 S J - A

<b>Processor</b>	CX M1/AM K5/AM K6/Pentium
<b>Processor Speed</b>	75/90/100/120/133/150/166/180/200MHz
<b>Chip Set</b>	SIS
<b>Video Chip Set</b>	Unidentified
<b>Maximum Onboard Memory</b>	256MB (EDO supported)
<b>Maximum Video Memory</b>	Unidentified
<b>Cache</b>	Unidentified
<b>BIOS</b>	Unidentified
<b>Dimensions</b>	305mm x 244mm
<b>I/O Options</b>	32-bit PCI slots (4), floppy drive interface, IDE interfaces (2), parallel port, PS/2 mouse port, serial ports (2), VGA interface, IR connector, USB connector, ATX power connector
<b>NPU Options</b>	None



*Continued on next page . . .*

# ELITEGROUP COMPUTER SYSTEMS, INC.

## P5SJ-A

... continued from previous page

CONNECTIONS			
Purpose	Location	Purpose	Location
ATX power connector	ATX	Serial port 1	CN4
Power LED	C1/pins 1 & 3	IDE interface 2	CN5
ACPI switch	C1/pins 4 & 5	IDE interface 1	CN6
ACPI LED	C1/pins 6 - 8	Floppy drive interface	CN7
Reset switch	C1/pins 9 & 10	IR connector	IR1
Keylock	C1/pins 11 & 12	Chassis fan power	J1
Speaker	C1/pins 13 - 16	VGA interface	J6
IDE interface LED	C1/pins 17 & 18	Wake up connector	J8
Serial port 2	CN1	32-bit PCI slots	PC1 – PC4
Parallel port	CN2	USB connector	USB
PS/2 mouse port	CN3		

USER CONFIGURABLE SETTINGS		
Function	Label	Position
í CMOS memory normal operation	JP16	Pins 1 & 2 closed
CMOS memory clear	JP16	Pins 2 & 3 closed
í Power supply select AT	JP17	Pins 2 & 3 closed
Power supply select ATX	JP17	Pins 1 & 2 closed
í Flash BIOS boot block enabled	JP20	Pins 1 & 2 closed
Flash BIOS boot block disabled	JP20	Pins 2 & 3 closed

DRAM CONFIGURATION		
Size	Bank 0	Bank 1
2MB	(2) 512K x 36	None
4MB	(2) 512K x 36	(2) 512K x 36
8MB	(2) 1M x 36	None
16MB	(2) 2M x 36	None
16MB	(2) 1M x 36	(2) 1M x 36
24MB	(2) 2M x 36	(2) 1M x 36
32MB	(2) 4M x 36	None
32MB	(2) 2M x 36	(2) 2M x 36
40MB	(2) 4M x 36	(2) 1M x 36
48MB	(2) 4M x 36	(2) 2M x 36
64MB	(2) 8M x 36	None
64MB	(2) 4M x 36	(2) 4M x 36
72MB	(2) 8M x 36	(2) 1M x 36
80MB	(2) 8M x 36	(2) 2M x 36
96MB	(2) 8M x 36	(2) 4M x 36
128MB	(2) 8M x 36	(2) 8M x 36

Continued on next page. . .

# ELITEGROUP COMPUTER SYSTEMS, INC.

## P5SJ-A

... continued from previous page

DRAM CONFIGURATION (CON'T)		
Size	Bank 0	Bank 1
128MB	(2) 16M x 36	None
136MB	(2) 16M x 36	(2) 1M x 36
144MB	(2) 16M x 36	(2) 2M x 36
160MB	(2) 16M x 36	(2) 4M x 36
192MB	(2) 16M x 36	(2) 8M x 36
256MB	(2) 16M x 36	(2) 16M x 36
256MB	(2) 32M x 36	None

Note: Board accepts EDO memory.

CACHE CONFIGURATION
Note: The size and location of the cache is unidentified.

CPU SPEED SELECTION (CYRIX)								
CPU speed	Clock speed	Multiplier	BF0	BF1	JP12	JP13	JP14	JP15
90MHz	60MHz	2x	2 & 3	1 & 2	2 & 3	1 & 2	1 & 2	2 & 3
100MHz	50MHz	2x	2 & 3	1 & 2	2 & 3	2 & 3	1 & 2	2 & 3
120MHz	55MHz	2x	2 & 3	1 & 2	2 & 3	2 & 3	1 & 2	1 & 2
133MHz	60MHz	2x	2 & 3	1 & 2	2 & 3	1 & 2	1 & 2	2 & 3
150MHz	66MHz	2x	2 & 3	1 & 2	1 & 2	2 & 3	1 & 2	2 & 3
166MHz	66MHz	2x	2 & 3	1 & 2	1 & 2	2 & 3	1 & 2	2 & 3
200MHz	75MHz	3x	1 & 2	2 & 3	2 & 3	1 & 2	1 & 2	1 & 2

Note: Pins designated should be in the closed position.

CPU SPEED SELECTION (AMD)								
CPU speed	Clock speed	Multiplier	BF0	BF1	JP12	JP13	JP14	JP15
75MHz	50MHz	1.5x	1 & 2	1 & 2	2 & 3	2 & 3	1 & 2	2 & 3
90MHz	60MHz	1.5x	1 & 2	1 & 2	2 & 3	1 & 2	1 & 2	2 & 3
100MHz	66MHz	1.5x	1 & 2	1 & 2	1 & 2	2 & 3	1 & 2	2 & 3
120MHz	60MHz	2x	2 & 3	1 & 2	2 & 3	1 & 2	1 & 2	2 & 3
133MHz	66MHz	2x	2 & 3	1 & 2	1 & 2	2 & 3	1 & 2	2 & 3
150MHz	60MHz	2.5x	2 & 3	2 & 3	2 & 3	1 & 2	1 & 2	2 & 3
166MHz	66MHz	2.5x	2 & 3	2 & 3	1 & 2	2 & 3	1 & 2	2 & 3

Note: Pins designated should be in the closed position.

Continued on next page. . .

ELITEGROUP COMPUTER SYSTEMS, INC.  
P5SJ-A

... continued from previous page

CPU SPEED SELECTION (INTEL)								
CPU speed	Clock speed	Multiplier	BFO	BF1	JP12	JP13	JP14	JP15
75MHz	50MHz	1.5x	1 & 2	1 & 2	2 & 3	2 & 3	1 & 2	2 & 3
90MHz	60MHz	1.5x	1 & 2	1 & 2	2 & 3	1 & 2	1 & 2	2 & 3
100MHz	66MHz	1.5x	1 & 2	1 & 2	1 & 2	2 & 3	1 & 2	2 & 3
120MHz	60MHz	2x	2 & 3	1 & 2	2 & 3	1 & 2	1 & 2	2 & 3
133MHz	66MHz	2x	2 & 3	1 & 2	1 & 2	2 & 3	1 & 2	2 & 3
150MHz	60MHz	2.5x	2 & 3	2 & 3	2 & 3	1 & 2	1 & 2	2 & 3
166MHz	66MHz	2.5x	2 & 3	2 & 3	1 & 2	2 & 3	1 & 2	2 & 3
180MHz	60MHz	3x	1 & 2	2 & 3	2 & 3	1 & 2	1 & 2	2 & 3
200MHz	66MHz	3x	1 & 2	2 & 3	1 & 2	2 & 3	1 & 2	2 & 3

Note: Pins designated should be in the closed position.

CPU VOLTAGE SELECTION (SINGLE)		
Voltage	JP6	JP22
3.3v	Pins 1 & 2 closed	Pins 1 & 2, 3 & 4, 5 & 6, 7 & 8 closed
3.52v	Pins 3 & 4 closed	Pins 1 & 2, 3 & 4, 5 & 6, 7 & 8 closed

CPU VOLTAGE SELECTION (DUAL)			
Voltage	V core	JP6	JP22
3.3v	2.54v	1 & 2	3 & 4, 7 & 8
3.3v	2.84v	1 & 2	1 & 2
3.3v	2.94v	1 & 2	1 & 2, 7 & 8
3.3v	3.24v	1 & 2	1 & 2, 3 & 4
3.3v	3.34v	1 & 2	3 & 4, 5 & 6
3.52v	2.54v	3 & 4	3 & 4, 7 & 8
3.52v	2.84v	3 & 4	1 & 2.
3.52v	2.94v	3 & 4	1 & 2, 7 & 8
3.52v	3.24v	3 & 4	1 & 2, 3 & 4
3.52v	3.34v	3 & 4	3 & 4, 5 & 6

Note: Pins designated should be in the closed position.

ON BOARD VIDEO SELECTION			
Setting	JP23	JP24	JP25
Enabled	Pins 1 & 2 closed	Pins 2 & 3 closed	Pins 1 & 2 closed
Disabled	Pins 2 & 3 closed	Pins 1 & 2 closed	Pins 2 & 3 closed