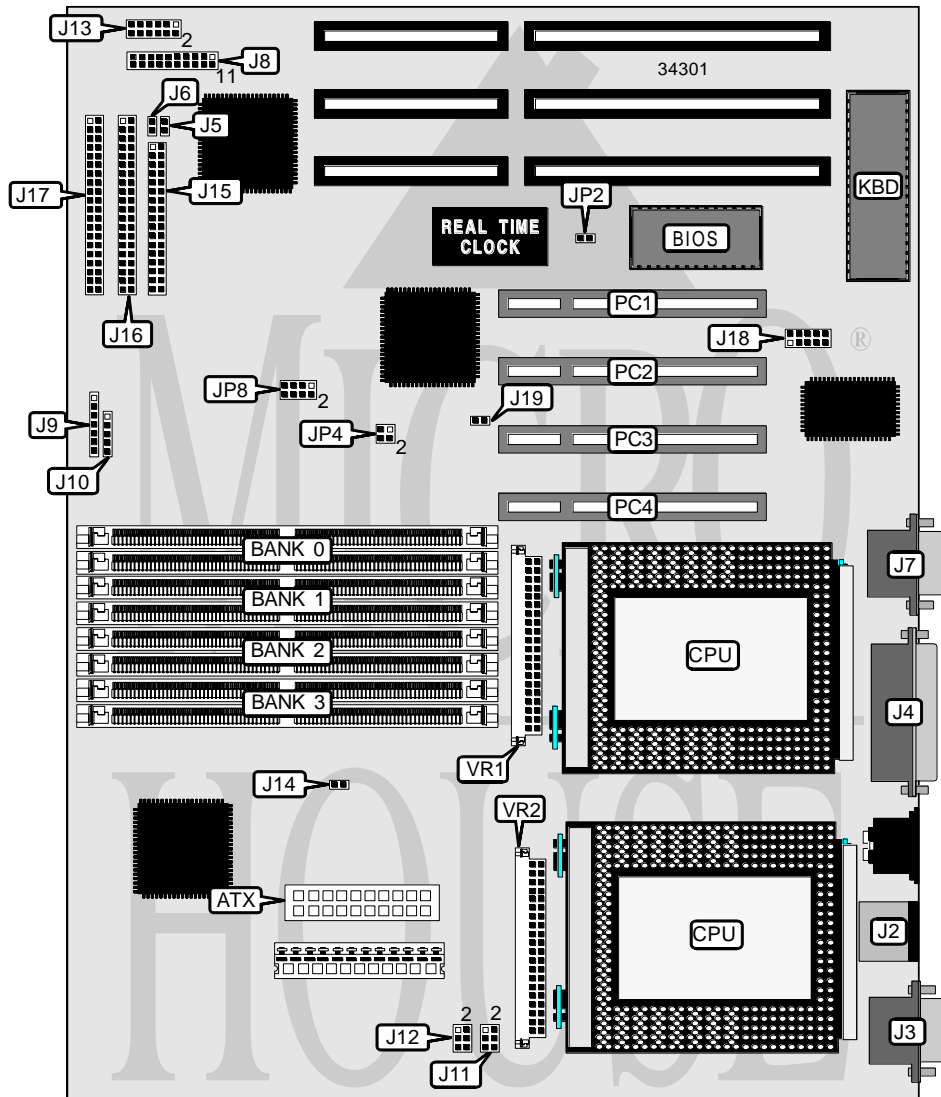


ELITEGROUP COMPUTER SYSTEMS, INC.

P6FX2-A (VER. 1.1)

Processor	Pentium Pro
Processor Speed	150/166/180/200MHz
Chip Set	Intel
Video Chip Set	None
Maximum Onboard Memory	512MB (EDO supported)
Maximum Video Memory	None
Cache	256/512KB (located on Pentium Pro CPU)
BIOS	AMI
Dimensions	305mm x 244mm
I/O Options	32-bit PCI slots (4), floppy drive interface, green PC connector, IDE interfaces (2), parallel port, PS/2 mouse port, serial ports (2), IR connectors (2), VRM connectors (2), USB connector, ATX power connector
NPU Options	None



Continued on next page. . .

ELITEGROUP COMPUTER SYSTEMS, INC.
P6FX2-A (VER. 1.1)

... continued from previous page

CONNECTIONS			
Purpose	Location	Purpose	Location
ATX power connector	ATX	IR connector	J10
PS/2 mouse port	J2	Chassis fan power 2	J11
Serial port 1	J3	Chassis fan power 1	J12
Parallel port	J4	External sensor connector	J13
IDE interface LED	J5	Soft off power supply	J14
IDE interface LED	J6	Floppy drive interface	J15
Serial port 2	J7	IDE interface 1	J16
Power LED	J8/pins 2 & 3	IDE interface 2	J17
Green PC connector	J8/pins 4 & 5	USB connector	J18
Reset switch	J8/pins 9 & 10	Green PC LED	J19
Power LED & keylock	J8/pins 11 - 15	32-bit PCI slots	PC1 – PC4
Speaker	J8/pins 17 - 20	VRM connector 1	VR1
IR connector (fast)	J9	VRM connector 2	VR2

USER CONFIGURABLE SETTINGS		
Function	Label	Position
í Password normal operation	J13/pins 1 & 2	Open
Password clear	J13/pins 1 & 2	Closed
í CMOS memory normal operation	JP2	Open
CMOS memory clear	JP2	Closed

DRAM CONFIGURATION				
Size	Bank 0	Bank 1	Bank 2	Bank 3
8MB	(2) 1M x 36	None	None	None
16MB	(2) 1M x 36	(2) 1M x 36	None	None
16MB	(2) 2M x 36	None	None	None
24MB	(2) 1M x 36	(2) 1M x 36	(2) 1M x 36	None
24MB	(2) 2M x 36	(2) 1M x 36	None	None
32MB	(2) 1M x 36	(2) 1M x 36	(2) 1M x 36	(2) 1M x 36
32MB	(2) 2M x 36	(2) 1M x 36	(2) 1M x 36	None
32MB	(2) 2M x 36	(2) 2M x 36	None	None
32MB	(2) 4M x 36	None	None	None
40MB	(2) 2M x 36	(2) 1M x 36	(2) 1M x 36	(2) 1M x 36
40MB	(2) 4M x 36	(2) 1M x 36	None	None
48MB	(2) 2M x 36	(2) 2M x 36	(2) 2M x 36	None
48MB	(2) 4M x 36	(2) 1M x 36	(2) 1M x 36	None
48MB	(2) 4M x 36	(2) 2M x 36	None	None
56MB	(2) 4M x 36	(2) 1M x 36	(2) 1M x 36	(2) 1M x 36
64MB	(2) 2M x 36	(2) 2M x 36	(2) 2M x 36	(2) 2M x 36
64MB	(2) 4M x 36	(2) 2M x 36	(2) 2M x 36	None
64MB	(2) 4M x 36	(2) 4M x 36	None	None
64MB	(2) 8M x 36	None	None	None

Continued on next page...

ELITEGROUP COMPUTER SYSTEMS, INC.
P6FX2-A (VER. 1.1)

... continued from previous page

DRAM CONFIGURATION (CON'T)				
Size	Bank 0	Bank 1	Bank 2	Bank 3
72MB	(2) 8M x 36	(2) 1M x 36	None	None
80MB	(2) 4M x 36	(2) 2M x 36	(2) 2M x 36	(2) 2M x 36
80MB	(2) 8M x 36	(2) 1M x 36	(2) 1M x 36	None
80MB	(2) 8M x 36	(2) 2M x 36	None	None
88MB	(2) 8M x 36	(2) 1M x 36	(2) 1M x 36	(2) 1M x 36
96MB	(2) 4M x 36	(2) 4M x 36	(2) 4M x 36	None
96MB	(2) 8M x 36	(2) 2M x 36	(2) 2M x 36	None
96MB	(2) 8M x 36	(2) 4M x 36	None	None
112MB	(2) 8M x 36	(2) 2M x 36	(2) 2M x 36	(2) 2M x 36
128MB	(2) 4M x 36	(2) 4M x 36	(2) 4M x 36	(2) 4M x 36
128MB	(2) 8M x 36	(2) 4M x 36	(2) 4M x 36	None
128MB	(2) 8M x 36	(2) 8M x 36	None	None
128MB	(2) 16M x 36	None	None	None
136MB	(2) 16M x 36	(2) 1M x 36	None	None
144MB	(2) 16M x 36	(2) 1M x 36	(2) 1M x 36	None
144MB	(2) 16M x 36	(2) 2M x 36	None	None
152MB	(2) 16M x 36	(2) 1M x 36	(2) 1M x 36	(2) 1M x 36
160MB	(2) 8M x 36	(2) 4M x 36	(2) 4M x 36	(2) 4M x 36
160MB	(2) 16M x 36	(2) 2M x 36	(2) 2M x 36	None
160MB	(2) 16M x 36	(2) 4M x 36	None	None
176MB	(2) 16M x 36	(2) 2M x 36	(2) 2M x 36	(2) 2M x 36
192MB	(2) 8M x 36	(2) 8M x 36	(2) 8M x 36	None
192MB	(2) 16M x 36	(2) 4M x 36	(2) 4M x 36	None
192MB	(2) 16M x 36	(2) 8M x 36	None	None
224MB	(2) 16M x 36	(2) 4M x 36	(2) 4M x 36	(2) 4M x 36
256MB	(2) 8M x 36	(2) 8M x 36	(2) 8M x 36	(2) 8M x 36
256MB	(2) 16M x 36	(2) 8M x 36	(2) 8M x 36	None
256MB	(2) 16M x 36	(2) 16M x 36	None	None
320MB	(2) 16M x 36	(2) 8M x 36	(2) 8M x 36	(2) 8M x 36
384MB	(2) 16M x 36	(2) 16M x 36	(2) 16M x 36	None
512MB	(2) 16M x 36	(2) 16M x 36	(2) 16M x 36	(2) 16M x 36

Note: Board accepts EDO memory.

CACHE CONFIGURATION
Note: 256KB/512KB cache is located on the Pentium Pro CPU.

CPU SPEED SELECTION				
CPU speed	Clock speed	Multiplier	JP4	JP8
150MHz	60MHz	2.5x	3 & 4	3 & 4, 5 & 6, 7 & 8
166MHz	66MHz	2.5x	1 & 2	3 & 4, 5 & 6, 7 & 8
180MHz	60MHz	3x	3 & 4	1 & 2, 5 & 6, 7 & 8
200MHz	66MHz	3x	1 & 2	1 & 2, 5 & 6, 7 & 8

Note: Pins designated should be in the closed position.