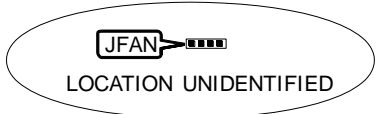
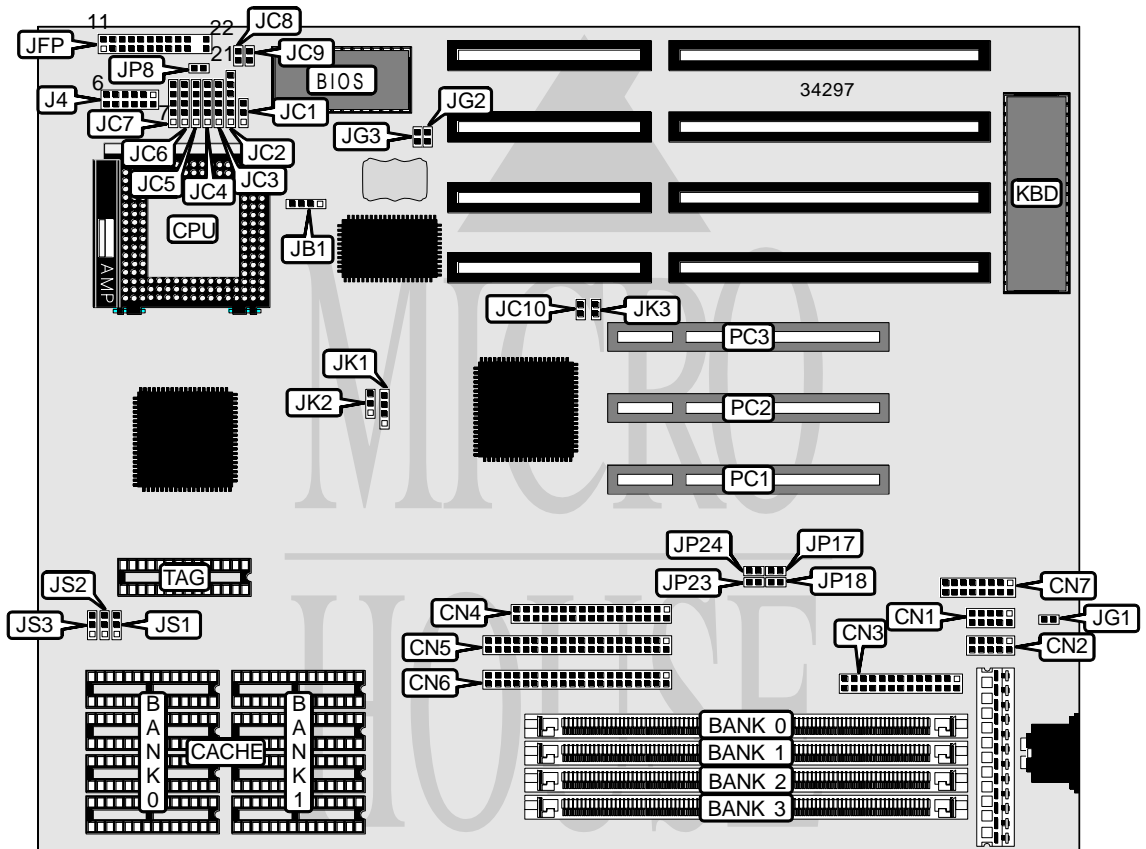


MICRO-STAR INTERNATIONAL CO., LTD.
 MS-4143 (VER. 1.0)

Processor	80486SX/SL80486SX/AM486DX/80486DX/SL80486DX/CX486DX2/ AM486DXL/AM486DX2/80486DX2/SL80486DX2/SL80486DX4/P24D
Processor Speed	25/33/40/50(internal)/66(internal)/75(internal)/80(internal)/ 100(internal)MHz
Chip Set	ALI
Video Chip Set	None
Maximum Onboard Memory	64MB
Maximum Video Memory	None
Cache	128/256/512KB
BIOS	AMI
Dimensions	270mm x 220mm
I/O Options	32-bit PCI slots (3), floppy drive interface, game interface, green PC connector, IDE interfaces (2), parallel port, serial ports (2)
NPU Options	None



Continued on next page...

MICRO-STAR INTERNATIONAL CO., LTD.
MS-4143 (VER. 1.0)

... continued from previous page

CONNECTIONS			
Purpose	Location	Purpose	Location
Serial port 1	CN1	Speaker	JFP/pins 7 - 10
Serial port 2	CN2	Turbo LED	JFP/pins 12 & 13
Parallel port	CN3	Reset switch	JFP/pins 19 & 20
Floppy drive interface	CN4	IDE interface LED	JFP/pins 21 & 22
IDE interface 2	CN5	Chassis fan power	JFAN
IDE interface 1	CN6	Green PC connector (monitor)	JG1
Game interface	CN7	Green PC LED	JG2
External battery	JB1	Green PC connector	JG3
Power LED & keylock	JFP/pins 1 - 5	32-bit PCI slots	PC1 - PC3

USER CONFIGURABLE SETTINGS		
Function	Label	Position
í Battery type select internal	JB1	Pins 2 & 3 closed
Battery type select external	JB1	Closed
í Factory configured - do not alter	JC10	Unidentified

DRAM CONFIGURATION				
Size	Bank 0	Bank 1	Bank 2	Bank 3
1MB	(1) 256K x 36	None	None	None
2MB	(1) 512K x 36	None	None	None
2MB	(1) 256K x 36	(1) 256K x 36	None	None
3MB	(1) 256K x 36	(1) 256K x 36	(1) 256K x 36	None
4MB	(1) 1M x 36	None	None	None
4MB	(1) 512K x 36	(1) 512K x 36	None	None
4MB	(1) 256K x 36	(1) 256K x 36	(1) 256K x 36	(1) 256K x 36
6MB	(1) 512K x 36	(1) 512K x 36	(1) 512K x 36	None
8MB	(1) 2M x 36	None	None	None
8MB	(1) 1M x 36	(1) 1M x 36	None	None
8MB	(1) 512K x 36	(1) 512K x 36	(1) 512K x 36	(1) 512K x 36
12MB	(1) 2M x 36	(1) 1M x 36	None	None
12MB	(1) 1M x 36	(1) 1M x 36	(1) 1M x 36	None
16MB	(1) 4M x 36	None	None	None
16MB	(1) 2M x 36	(1) 2M x 36	None	None
16MB	(1) 1M x 36	(1) 1M x 36	(1) 1M x 36	(1) 1M x 36
20MB	(1) 4M x 36	(1) 1M x 36	None	None
20MB	(1) 2M x 36	(1) 1M x 36	(1) 1M x 36	(1) 1M x 36
24MB	(1) 4M x 36	(1) 2M x 36	None	None
24MB	(1) 2M x 36	(1) 2M x 36	(1) 2M x 36	None
28MB	(1) 4M x 36	(1) 1M x 36	(1) 1M x 36	(1) 1M x 36
32MB	(1) 8M x 36	None	None	None
32MB	(1) 4M x 36	(1) 4M x 36	None	None

Continued on next page. . .

MICRO-STAR INTERNATIONAL CO., LTD.
MS-4143 (VER. 1.0)

... continued from previous page

DRAM CONFIGURATION (CON'T)				
Size	Bank 0	Bank 1	Bank 2	Bank 3
32MB	(1) 2M x 36	(1) 2M x 36	(1) 2M x 36	(1) 2M x 36
40MB	(1) 8M x 36	(1) 1M x 36	(1) 1M x 36	None
40MB	(1) 8M x 36	(1) 2M x 36	None	None
40MB	(1) 4M x 36	(1) 2M x 36	(1) 2M x 36	(1) 2M x 36
44MB	(1) 8M x 36	(1) 1M x 36	(1) 1M x 36	(1) 1M x 36
48MB	(1) 8M x 36	(1) 2M x 36	(1) 2M x 36	None
48MB	(1) 8M x 36	(1) 4M x 36	None	None
48MB	(1) 4M x 36	(1) 4M x 36	(1) 4M x 36	None
64MB	(1) 4M x 36	(1) 4M x 36	(1) 4M x 36	(1) 4M x 36
64MB	(1) 8M x 36	(1) 8M x 36	None	None
64MB	(1) 16M x 36	None	None	None

CACHE CONFIGURATION			
Size	Bank 0	Bank 1	TAG
128KB	(4) 32K x 8	None	(1) 8K/16K/32 x 8
256KB (A)	(4) 32K x 8	(4) 32K x 8	(1) 16K/32K x 8
256KB (B)	(4) 64K x 8	None	(1) 16K/32K x 8
512KB	(4) 128K x 8	None	(1) 32K x 8

CACHE JUMPER CONFIGURATION			
Size	JS1	JS2	JS3
128KB	Pins 2 & 3 closed	Pins 2 & 3 closed	Pins 2 & 3 closed
256KB (A)	Pins 1 & 2 closed	Pins 1 & 2 closed	Pins 2 & 3 closed
256KB (B)	Pins 2 & 3 closed	Pins 1 & 2 closed	Pins 2 & 3 closed
512KB	Pins 2 & 3 closed	Pins 1 & 2 closed	Pins 1 & 2 closed

CPU SPEED SELECTION			
Speed	JK1	JK2	JK3
25MHz	Open	Pins 2 & 3 closed	Open
33MHz	Pins 1 & 2, 3 & 4 closed	Pins 2 & 3 closed	Open
40MHz	Pins 1 & 2 closed	Pins 1 & 2 closed	Closed
50iMHz	Open	Pins 2 & 3 closed	Open
66iMHz	Pins 1 & 2, 3 & 4 closed	Pins 2 & 3 closed	Open
75iMHz	Open	Pins 2 & 3 closed	Open
80iMHz	Pins 1 & 2 closed	Pins 1 & 2 closed	Closed
100iMHz	Pins 1 & 2, 3 & 4 closed	Pins 2 & 3 closed	Open

Continued on next page...

MICRO-STAR INTERNATIONAL CO., LTD.
MS-4143 (VER. 1.0)

... continued from previous page

CPU TYPE SELECTION				
Type	JC1	JC2	JC3	JC4
80486SX	Open	2 & 3	Open	Open
SL80486SX	Open	2 & 3	Open	2 & 3
AM486DX	2 & 3	1 & 2, 3 & 4	Open	Open
80486DX	2 & 3	1 & 2, 3 & 4	Open	Open
SL80486DX	2 & 3	1 & 2, 3 & 4	Open	2 & 3
CX486DX2	2 & 3	1 & 2, 3 & 4	4 & 5	4 & 5
AM486DXL	2 & 3	1 & 2, 3 & 4	1 & 2	1 & 2
AM486DX2	2 & 3	1 & 2, 3 & 4	Open	Open
80486DX2	2 & 3	1 & 2, 3 & 4	Open	Open
SL80486DX2	2 & 3	1 & 2, 3 & 4	Open	2 & 3
SL80486DX4	2 & 3	1 & 2, 3 & 4	Open	2 & 3
P24D	2 & 3	1 & 2, 3 & 4	2 & 3	2 & 3

Note: Pins designated should be in the closed position.

CPU TYPE SELECTION (CON'T)					
Type	JC5	JC6	JC7	JC8	JC9
80486SX	1 & 2	Open	1 & 2	Open	Open
SL80486SX	2 & 3	2 & 3	1 & 2	Closed	Open
AM486DX	1 & 2	Open	1 & 2	Open	Open
80486DX	1 & 2	Open	1 & 2	Open	Open
SL80486DX	2 & 3	2 & 3	1 & 2	Closed	Open
CX486DX2	4 & 5	4 & 5	2 & 3	Open	Closed
AM486DXL	1 & 2	1 & 2	1 & 2	Open	Open
AM486DX2	1 & 2	Open	1 & 2	Open	Open
80486DX2	1 & 2	Open	1 & 2	Open	Open
SL80486DX2	2 & 3	2 & 3	1 & 2	Closed	Open
SL80486DX4	2 & 3	2 & 3	1 & 2	Closed	Open
P24D	2 & 3	2 & 3	2 & 3, 4 & 5	Closed	Open

Note: Pins designated should be in the closed position.

CPU VOLTAGE SELECTION		
Voltage	J4	JP8
3.45v	Pins 4 & 10, 5 & 11, 6 & 12 closed	Open
3.6v	Pins 4 & 10, 5 & 11, 6 & 12 closed	Closed
í 5v	Pins 1 & 7, 2 & 8, 3 & 9 closed	Open

DMA CHANNEL SELECTION				
Channel	JP17	JP18	JP23	JP24
1	Closed	Closed	Open	Open
í 3	Open	Open	Closed	Closed