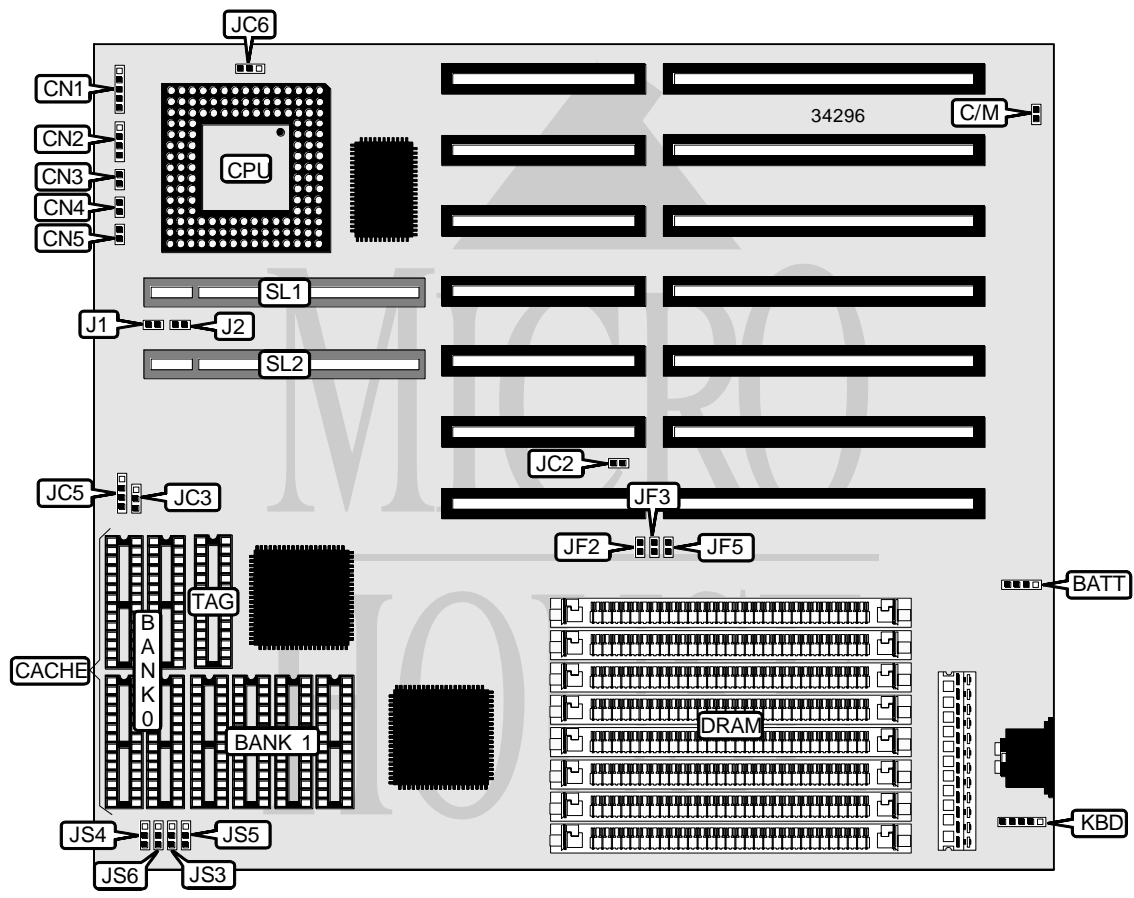


# UNIDENTIFIED

## VL-486

<b>Processor</b>	80486SX/80487SX/ODP487SX/80486DX/80486DX2
<b>Processor Speed</b>	25/33/50(internal)/50/66(internal)MHz
<b>Chip Set</b>	UMC
<b>Video Chip Set</b>	None
<b>Maximum Onboard Memory</b>	32MB
<b>Maximum Video Memory</b>	None
<b>Cache</b>	128/256KB
<b>BIOS</b>	AMI
<b>Dimensions</b>	254mm x 218mm
<b>I/O Options</b>	32-bit VESA local bus slots (2)
<b>NPU Options</b>	None



CONNECTIONS			
Purpose	Location	Purpose	Location
External battery	BATT	Turbo switch	CN4
Power LED & keylock	CN1	Turbo LED	CN5
Speaker	CN2	Auxiliary keyboard connector	KBD
Reset switch	CN3	32-bit VESA local bus slots	SL1 & SL2

Continued on next page. . .

UNIDENTIFIED  
VL-486

... continued from previous page

USER CONFIGURABLE SETTINGS		
Function	Label	Position
Battery type select internal	BATT	Pins 2 & 3 closed
Battery type select external	BATT	Closed
CMOS memory clear	BATT	Pins 3 & 4 closed
Monitor type select color	C/M	Closed
Monitor type select monochrome	C/M	Open

DRAM CONFIGURATION		
Size	Bank 0	Bank 1
1MB	(4) 256K x 9	None
2MB	(4) 256K x 9	(4) 256K x 9
4MB	(4) 1M x 9	None
5MB	(4) 256K x 9	(4) 1M x 9
8MB	(4) 1M x 9	(4) 1M x 9
16MB	(4) 4M x 9	None
20MB	(4) 1M x 9	(4) 4M x 9
32MB	(4) 4M x 9	(4) 4M x 9

Note: The location of banks 0 & 1 is unidentified.

CACHE CONFIGURATION			
Size	Bank 0	Bank 1	TAG
128KB	(4) 32K x 8	None	(1) 8K x 8
256KB	(4) 32K x 8	(4) 32K x 8	(1) 32K x 8

CACHE JUMPER CONFIGURATION				
Size	JS3	JS4	JS5	JS6
128KB	Pins 1 & 2 closed	Pins 1 & 2 closed	Pins 1 & 2 closed	Pins 1 & 2 closed
256KB	Pins 2 & 3 closed	Pins 2 & 3 closed	Pins 2 & 3 closed	Pins 2 & 3 closed

CPU SPEED SELECTION					
Speed	JC2	JC3	JF2	JF3	JF5
25MHz	Open	2 & 3	Closed	Closed	Open
33MHz	Open	2 & 3	Open	Closed	Closed
50iMHz	Open	2 & 3	Closed	Closed	Open
50MHz	Closed	1 & 2	Open	Open	Open
66iMHz	Open	2 & 3	Open	Closed	Closed

Note: Pins designated should be in the closed position.

Continued on next page...

UNIDENTIFIED  
VL-486

... continued from previous page

CPU TYPE SELECTION		
Type	JC5	JC6
80486SX	Pins 2 & 3 closed	Open
80487SX	Pins 1 & 2, 3 & 4 closed	Pins 2 & 3 closed
ODP487SX	Pins 1 & 2, 3 & 4 closed	Pins 2 & 3 closed
80486DX	Pins 1 & 2, 3 & 4 closed	Pins 1 & 2 closed
80486DX2	Pins 1 & 2, 3 & 4 closed	Pins 1 & 2 closed

VL BUS WAIT STATE SELECTION	
Setting	J2
0	Open
1	Closed

VL BUS SPEED SELECTION	
Speed	J1
<= 33MHz	Open
>33 MHz	Closed