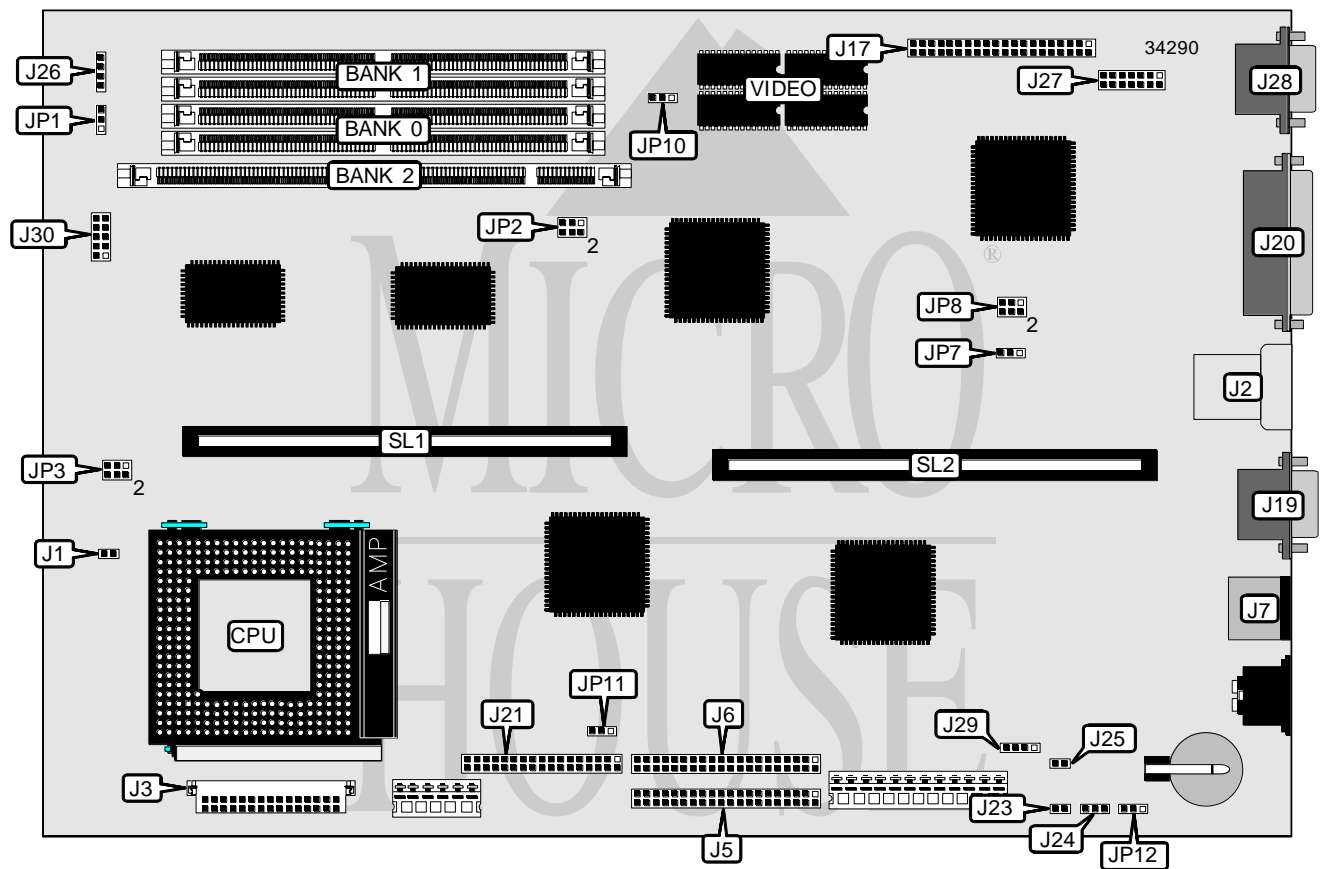


IBM CORPORATION

APTIVA 2159

Processor	Pentium
Processor Speed	133/150/166/200MHz
Chip Set	Unidentified
Video Chip Set	Unidentified
Maximum Onboard Memory	128MB (EDO supported)
Maximum Video Memory	2MB
Cache	256/512KB
BIOS	Unidentified
Dimensions	330mm x 218mm
I/O Options	Floppy drive interface, IDE interfaces (2), parallel port, PS/2 mouse port, serial port, VESA feature connector, VGA port, VGA interface, riser slot, cache slot, VRM connector, USB connector, Media console connector, wake up on ring connector
NPU Options	None



Continued on next page . . .

IBM CORPORATION
APTIVA 2159

... continued from previous page

CONNECTIONS			
Purpose	Location	Purpose	Location
Chassis fan power	J1	Soft off power supply	J23
USB connector	J2	Auxiliary 5v connector	J24
VRM connector	J3	Wake up on ring connector	J25
IDE interface 1	J5	IDE interface LED	J26
IDE interface 2	J6	VGA interface	J27
PS/2 mouse port	J7	VGA port	J28
VESA feature connector	J17	Speaker	J29
Serial port	J19	Media console connector	J30
Parallel port	J20	Cache slot	SL1
Floppy drive interface	J21	Riser slot	SL2

USER CONFIGURABLE SETTINGS		
Function	Label	Position
External speaker enabled	JP1	Pins 1 & 2 closed
External speaker disabled	JP1	Open
Flash BIOS write protect disabled	JP7	Pins 1 & 2 closed
Flash BIOS write protect enabled	JP7	Pins 2 & 3 closed
í Factory configured - do not alter	JP8	Unidentified
On board video enabled	JP10	Pins 1 & 2 closed
On board video disabled	JP10	Pins 2 & 3 closed
Floppy drive write protect disabled	JP11	Pins 1 & 2 closed
Floppy drive write protect enabled	JP11	Pins 2 & 3 closed
í CMOS memory normal operation	JP12	Pins 1 & 2 closed
CMOS memory clear	JP12	Pins 2 & 3 closed

DRAM CONFIGURATION		
Size	Bank 0	Bank 1
8MB	(2) 1M x 36	None
16MB	(2) 2M x 36	None
16MB	(2) 1M x 36	(2) 1M x 36
24MB	(2) 2M x 36	(2) 1M x 36
32MB	(2) 4M x 36	None
32MB	(2) 2M x 36	(2) 2M x 36
40MB	(2) 4M x 36	(2) 1M x 36
48MB	(2) 4M x 36	(2) 2M x 36
64MB	(2) 8M x 36	None
64MB	(2) 4M x 36	(2) 4M x 36
72MB	(2) 8M x 36	(2) 1M x 36
80MB	(2) 8M x 36	(2) 2M x 36
96MB	(2) 8M x 36	(2) 4M x 36
128MB	(2) 8M x 36	(2) 8M x 36

Note: Board accepts EDO memory. Board also accepts x 32 SIMMs. Banks are interchangeable.

Continued on next page. . .

IBM CORPORATION
 APTIVA 2159

... continued from previous page

DIMM CONFIGURATION	
Size	Bank 0
8MB	(1) 1M x 64
16MB	(1) 2M x 64
32MB	(1) 4M x 64
64MB	(1) 8M x 64

CACHE CONFIGURATION	
Size	SL1
256KB	256KB module installed
512KB	512KB module installed

VIDEO MEMORY CONFIGURATION
Note: Bank 0 is factory installed with 2MB of video memory and is not configurable.

CPU SPEED SELECTION				
CPU speed	Clock speed	Multiplier	JP2	JP3
133MHz	66MHz	2x	1 & 3, 2 & 4	2 & 4, 3 & 5
150MHz	60MHz	2.5x	3 & 5, 4 & 6	3 & 5, 4 & 6
166MHz	66MHz	2.5x	1 & 3, 2 & 4	3 & 5, 4 & 6
200MHz	66MHz	3x	1 & 3, 2 & 4	1 & 3, 4 & 6

Note: Pins designated should be in the closed position.