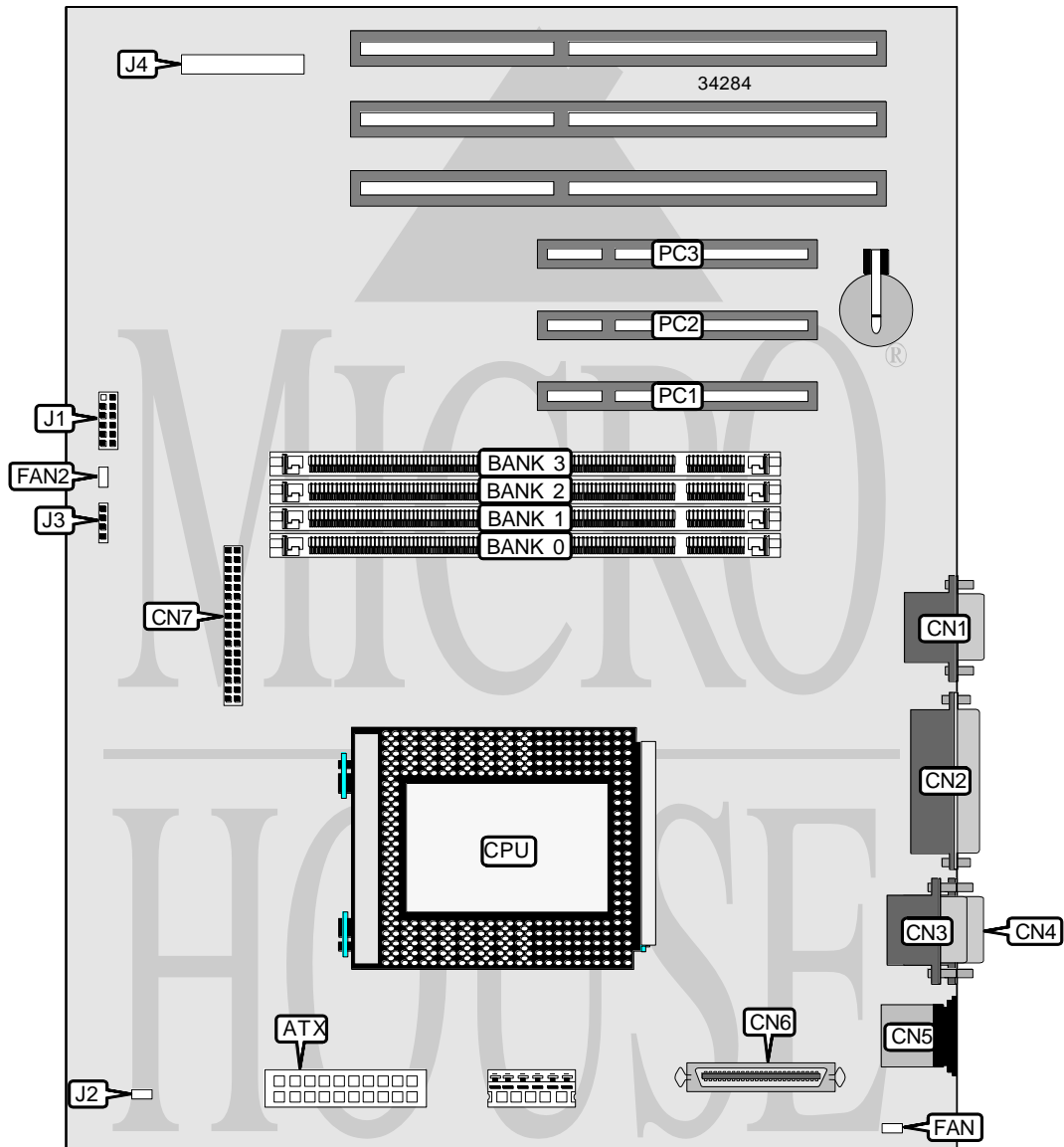


# DELL COMPUTER CORPORATION POWEREDGE 2100

<b>Processor</b>	Pentium Pro
<b>Processor Speed</b>	180/200MHz
<b>Chip Set</b>	Unidentified
<b>Video Chip Set</b>	Unidentified
<b>Maximum Onboard Memory</b>	256MB (EDO supported)
<b>Maximum Video Memory</b>	1MB
<b>Cache</b>	256KB (located on Pentium Pro CPU)
<b>BIOS</b>	Unidentified
<b>Dimensions</b>	305mm x 244mm
<b>I/O Options</b>	32-bit PCI slots (3), floppy drive interface, Ultra-Wide SCSI interface, parallel port, PS/2 mouse port, serial ports (2), VGA port, ATX power connector, Server Management connector
<b>NPU Options</b>	None



Continued on next page . . .

DELL COMPUTER CORPORATION  
POWEREDGE 2100

... continued from previous page

CONNECTIONS			
Purpose	Location	Purpose	Location
ATX power connector	ATX	Floppy drive interface	CN7
VGA port	CN1	Chassis fan power	FAN
Parallel port	CN2	Chassis fan power	FAN2
Serial port 2	CN3	Front panel connector	J2
Serial port 1	CN4	Server Management connector	J4
PS/2 mouse port	CN5	32-bit PCI slots	PC1 – PC3
Ultra-Wide SCSI interface	CN6		

USER CONFIGURABLE SETTINGS		
Function	Label	Position
System normal boot	J1/pins 1 & 2	Open
System boot from BIOS expansion card	J1/pins 1 & 2	Closed
On board video enabled	J1/pins 3 & 4	Closed
On board video disabled	J1/pins 3 & 4	Open
EISA configuration normal operation	J1/pins 5 & 6	Open
EISA configuration clear	J1/pins 5 & 6	Closed
Password enabled	J1/pins 7 & 8	Closed
Password disabled	J1/pins 7 & 8	Open
í Factory configured - do not alter	J3	Unidentified

DIMM CONFIGURATION				
Size	Bank 0	Bank 1	Bank 2	Bank 3
16MB	(1) 2M x 64	None	None	None
32MB	(1) 4M x 64	None	None	None
32MB	(1) 2M x 64	(1) 2M x 64	None	None
48MB	(1) 2M x 64	(1) 2M x 64	(1) 2M x 64	None
64MB	(1) 2M x 64	(1) 2M x 64	(1) 2M x 64	(1) 2M x 64
64MB	(1) 4M x 64	(1) 4M x 64	None	None
96MB	(1) 4M x 64	(1) 4M x 64	(1) 4M x 64	None
128MB	(1) 16M x 64	None	None	None
128MB	(1) 4M x 64	(1) 4M x 64	(1) 4M x 64	(1) 4M x 64
144MB	(1) 16M x 64	(1) 2M x 64	None	None
160MB	(1) 16M x 64	(1) 2M x 64	(1) 2M x 64	None
160MB	(1) 16M x 64	(1) 4M x 64	None	None
176MB	(1) 16M x 64	(1) 2M x 64	(1) 2M x 64	(1) 2M x 64
192MB	(1) 16M x 64	(1) 4M x 64	(1) 4M x 64	None
224MB	(1) 16M x 64	(1) 4M x 64	(1) 4M x 64	(1) 4M x 64
256MB	(1) 16M x 64	(1) 16M x 64	None	None

Note: Board accepts EDO memory.

CACHE CONFIGURATION
Note: 256KB/512KB cache is located on the Pentium Pro CPU.

Continued on next page. . .

DELL COMPUTER CORPORATION  
POWEREDGE 2100

... continued from previous page

**VIDEO MEMORY CONFIGURATION**

Note: Board is factory installed with 1MB video memory and is not configurable.

**CPU SPEED SELECTION**

<b>CPU speed</b>	<b>Clock speed</b>	<b>Multiplier</b>	<b>J1/pins 9 &amp; 10</b>	<b>J1/pins 11 &amp; 12</b>
180MHz	60MHz	3x	Closed	Open
200MHz	66MHz	3x	Open	Closed