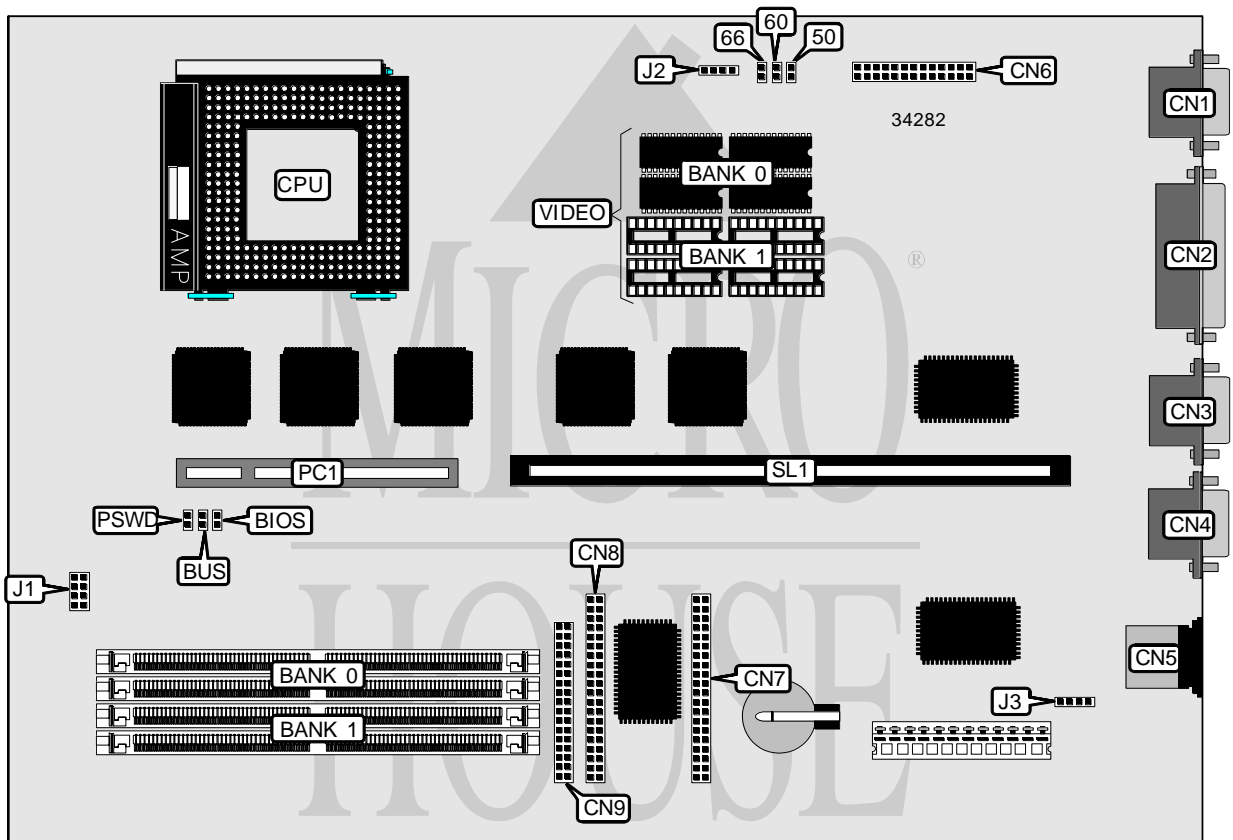


# DELL COMPUTER CORPORATION

## DTA

<b>Processor</b>	Pentium
<b>Processor Speed</b>	75/90/100/120/133MHz
<b>Chip Set</b>	Intel
<b>Video Chip Set</b>	S3
<b>Maximum Onboard Memory</b>	256MB
<b>Maximum Video Memory</b>	2MB
<b>Cache</b>	256KB
<b>BIOS</b>	Unidentified
<b>Dimensions</b>	330mm x 218mm
<b>I/O Options</b>	floppy drive interface, IDE interfaces (2), parallel port, PS/2 mouse port, serial ports (2), riser slots (2), VGA feature connector, VGA port
<b>NPU Options</b>	None



*Continued on next page...*

DELL COMPUTER CORPORATION  
DTA

... continued from previous page

CONNECTIONS			
Purpose	Location	Purpose	Location
VGA port	CN1	IDE interface 2	CN8
Parallel port	CN2	Floppy drive interface	CN9
Serial port 2	CN3	Front panel connector	J1
Serial port 1	CN4	IDE interface LED	J2
PS/2 mouse port	CN5	IDE interface LED	J3
VGA feature connector	CN6	Riser slot	PC1
IDE interface 1	CN7	Riser slot	SL1

USER CONFIGURABLE SETTINGS		
Function	Label	Position
? Factory configured - do not alter	BIOS	Open
? Factory configured - do not alter	BUS	Open
? Password enabled	PSWD	Closed
Password disabled	PSWD	Open

DRAM CONFIGURATION		
Size	Bank 0	Bank 1
8MB	(2) 1M x 36	None
16MB	(2) 2M x 36	None
16MB	(2) 1M x 36	(2) 1M x 36
24MB	(2) 2M x 36	(2) 1M x 36
32MB	(2) 4M x 36	None
32MB	(2) 2M x 36	(2) 2M x 36
40MB	(2) 4M x 36	(2) 1M x 36
48MB	(2) 4M x 36	(2) 2M x 36
64MB	(2) 8M x 36	None
64MB	(2) 4M x 36	(2) 4M x 36
72MB	(2) 8M x 36	(2) 1M x 36
80MB	(2) 8M x 36	(2) 2M x 36
96MB	(2) 8M x 36	(2) 4M x 36
128MB	(2) 8M x 36	(2) 8M x 36
128MB	(2) 16M x 36	None
136MB	(2) 16M x 36	(2) 1M x 36
144MB	(2) 16M x 36	(2) 2M x 36
160MB	(2) 16M x 36	(2) 4M x 36
192MB	(2) 16M x 36	(2) 8M x 36
256MB	(2) 16M x 36	(2) 16M x 36

Note: Board also accepts x 32 SIMMs.

CACHE CONFIGURATION
Note: 256KB cache is factory installed and is not configurable. The location is unidentified.

Continued on next page. . .

DELL COMPUTER CORPORATION  
D T A

... continued from previous page

VIDEO MEMORY CONFIGURATION		
Size	Bank 0	Bank 1
1MB	1MB	None
2MB	1MB	(4) 256K x 8
Note: Bank 0 is factory installed and is not configurable.		

CPU SPEED SELECTION				
CPU speed	Clock speed	50	60	66
75MHz	50MHz	Closed	Open	Open
90MHz	60MHz	Open	Closed	Open
100MHz	66MHz	Open	Open	Closed
120MHz	60MHz	Open	Closed	Open
133MHz	66MHz	Open	Open	Closed