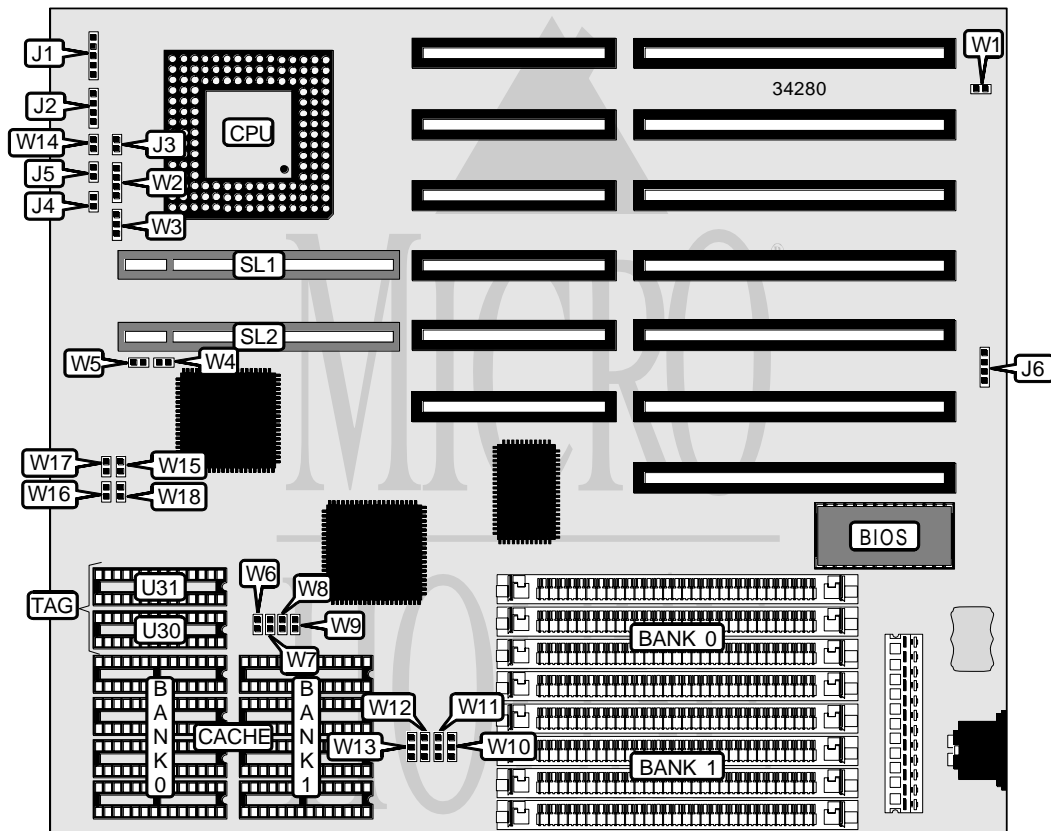


CHICONY, INC.

CH-486-33/50P

Processor	80486SX/80487SX/80486DX/80486DX2/P23T/P24T
Processor Speed	20/25/33/40/50(internal)/50/66(internal)MHz
Chip Set	UMC
Video Chip Set	None
Maximum Onboard Memory	32MB
Maximum Video Memory	None
Cache	64/128/256KB
BIOS	AMI
Dimensions	254mm x 218mm
I/O Options	32-bit VESA local bus slots (2)
NPU Options	None



CONNECTIONS			
Purpose	Location	Purpose	Location
Power LED & keylock	J1	Reset switch	J5
Speaker	J2	External battery	J6
Turbo switch	J3	32-bit VESA local bus slots	SL1 & SL2
Turbo LED	J4		

Continued on next page . . .

... continued from previous page

USER CONFIGURABLE SETTINGS		
Function	Label	Position
Monitor type select color	W1	Closed
Monitor type select monochrome	W1	Open
Battery type select internal	W14	Closed
Battery type select external	W14	Open

DRAM CONFIGURATION		
Size	Bank 0	Bank 1
1MB	(4) 256K x 9	None
2MB	(4) 256K x 9	(4) 256K x 9
4MB	(4) 1M x 9	None
5MB	(4) 256K x 9	(4) 1M x 9
8MB	(4) 1M x 9	(4) 1M x 9
16MB	(4) 4M x 9	None
20MB	(4) 1M x 9	(4) 4M x 9
32MB	(4) 4M x 9	(4) 4M x 9

CACHE CONFIGURATION				
Size	Bank 0	Bank 1	TAG (U30)	TAG (U31)
64KB	(4) 8K x 8	(4) 8K x 8	(1) 8K x 8	None
128KB	(4) 32K x 8	None	(1) 8K x 8	None
256KB (A)	(4) 32K x 8	(4) 32K x 8	(1) 32K x 8	None
256KB (B)	(4) 32K x 8	(4) 32K x 8	(1) 8K x 8	(1) 8K x 8

CACHE JUMPER CONFIGURATION				
Size	W6	W7	W8	W9
64KB	Open	Open	Open	Open
128KB	Open	Closed	Open	Closed
256KB (A)	Closed	Closed	Closed	Closed
256KB (B)	Closed	Closed	Closed	Closed

CACHE JUMPER CONFIGURATION (CON'T)				
Size	W10	W11	W12	W13
64KB	Pins 1 & 2 closed	Pins 1 & 2 closed	Pins 1 & 2 closed	Pins 1 & 2 closed
128KB	Pins 2 & 3 closed	Pins 1 & 2 closed	Pins 1 & 2 closed	Pins 2 & 3 closed
256KB (A)	Pins 1 & 2 closed	Pins 2 & 3 closed	Pins 2 & 3 closed	Pins 2 & 3 closed
256KB (B)	Pins 1 & 2 closed	Pins 2 & 3 closed	Pins 2 & 3 closed	Pins 2 & 3 closed

Continued on next page...

CHICONY, INC.
CH-486-33/50P

... continued from previous page

CPU SPEED SELECTION				
Speed	W15	W16	W17	W18
20MHz	Closed	Closed	Closed	Closed
25MHz	Closed	Open	Open	Closed
33MHz	Open	Open	Open	Closed
40MHz	Closed	Open	Open	Open
50iMHz	Closed	Open	Open	Closed
50MHz	Open	Open	Open	Open
66iMHz	Open	Open	Open	Closed

CPU TYPE SELECTION		
Type	W2	W3
80486SX	Pins 2 & 3 closed	Open
80487SX	Pins 1 & 2, 3 & 4 closed	Pins 1 & 2 closed
80486DX	Pins 1 & 2, 3 & 4 closed	Pins 2 & 3 closed
80486DX2	Pins 1 & 2, 3 & 4 closed	Pins 2 & 3 closed
P23T	Pins 1 & 2, 3 & 4 closed	Pins 1 & 2 closed
P24T	Pins 1 & 2, 3 & 4 closed	Pins 2 & 3 closed

VL BUS WAIT STATE SELECTION	
Setting	W4
0	Open
1	Closed

VL BUS SPEED SELECTION	
Speed	W5
<= 33MHz	Open
>33 MHz	Closed