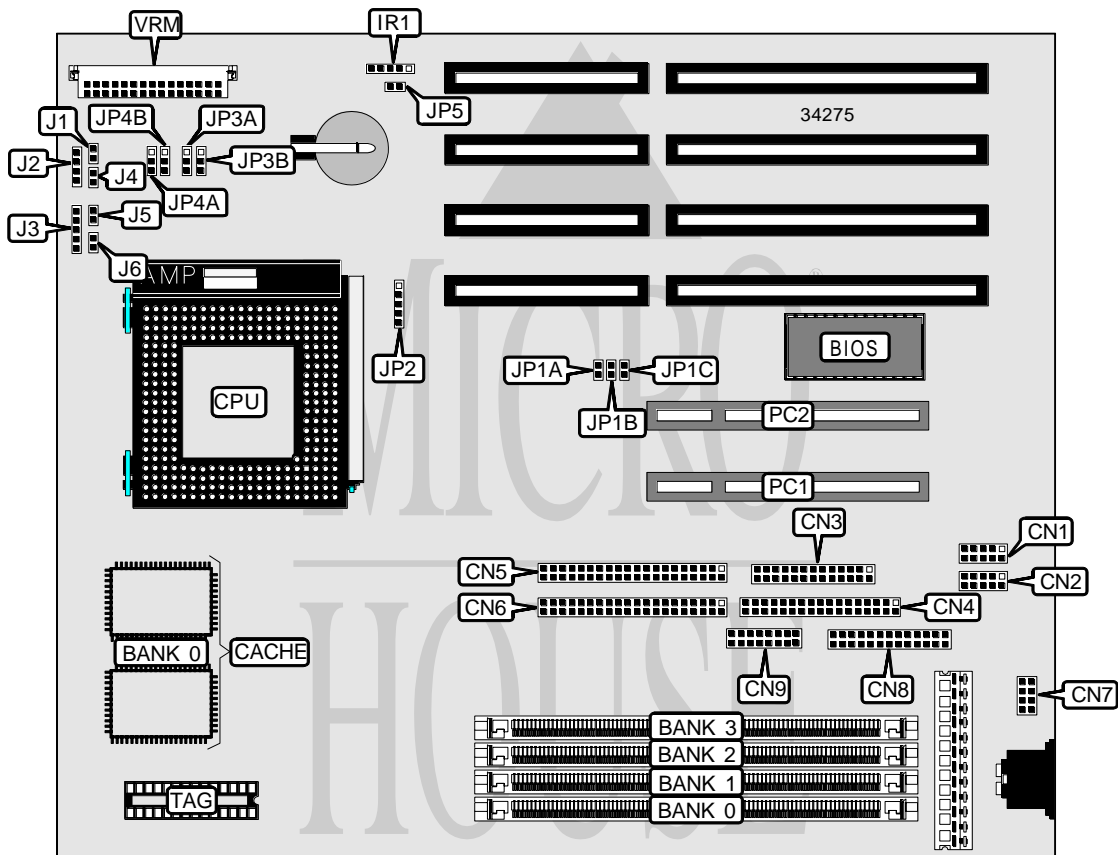


# ACTIVEI SYSTEMS, INC. COMPACT

<b>Processor</b>	CX M1/AM K5/Pentium
<b>Processor Speed</b>	75/90/100/120/133/150/166/200MHz
<b>Chip Set</b>	SIS
<b>Video Chip Set</b>	None
<b>Maximum Onboard Memory</b>	512MB (EDO supported)
<b>Maximum Video Memory</b>	None
<b>Cache</b>	256/512KB
<b>BIOS</b>	Award
<b>Dimensions</b>	254mm x 218mm
<b>I/O Options</b>	32-bit PCI slots (2), floppy drive interface, green PC connector, IDE interfaces (2), parallel port, PS/2 mouse interface, serial ports (2), VGA feature connector, VGA interface, IR connector, VRM connector
<b>NPU Options</b>	None



*Continued on next page...*

ACTIVEI SYSTEMS, INC.  
 COMPACT

... continued from previous page

CONNECTIONS			
Purpose	Location	Purpose	Location
Serial port 2	CN1	IR connector	IR1
Serial port 1	CN2	Speaker	J1
Parallel port	CN3	Power LED & keylock	J2
Floppy drive interface	CN4	Reset switch	J3
IDE interface 1	CN6	Turbo LED	J4
IDE interface 2	CN5	Green PC connector	J5
PS/2 mouse interface	CN7	IDE interface LED	J6
VGA feature connector	CN8	32-bit PCI slots	PC1 & PC2
VGA interface	CN9	VRM connector	VRM

USER CONFIGURABLE SETTINGS		
Function	Label	Position
í CMOS memory normal operation	JP5	Open
CMOS memory clear	JP5	Closed

DRAM CONFIGURATION				
Size	Bank 0	Bank 1	Bank 2	Bank 3
4MB	(1) 1M x 36	None	None	None
8MB	(1) 2M x 36	None	None	None
8MB	(1) 1M x 36	(1) 1M x 36	None	None
12MB	(1) 1M x 36	(1) 1M x 36	(1) 1M x 36	None
16MB	(1) 4M x 36	None	None	None
16MB	(1) 2M x 36	(1) 2M x 36	None	None
16MB	(1) 1M x 36	(1) 1M x 36	(1) 2M x 36	None
16MB	(1) 1M x 36	(1) 1M x 36	(1) 1M x 36	(1) 1M x 36
20MB	(1) 2M x 36	(1) 2M x 36	(1) 1M x 36	None
24MB	(1) 1M x 36	(1) 1M x 36	(1) 4M x 36	None
24MB	(1) 1M x 36	(1) 1M x 36	(1) 2M x 36	(1) 2M x 36
24MB	(1) 2M x 36	(1) 2M x 36	(1) 2M x 36	None
32MB	(1) 8M x 36	None	None	None
32MB	(1) 4M x 36	(1) 4M x 36	None	None
32MB	(1) 2M x 36	(1) 2M x 36	(1) 4M x 36	None
32MB	(1) 2M x 36	(1) 2M x 36	(1) 2M x 36	(1) 2M x 36
36MB	(1) 4M x 36	(1) 4M x 36	(1) 1M x 36	None
40MB	(1) 1M x 36	(1) 1M x 36	(1) 8M x 36	None
40MB	(1) 4M x 36	(1) 4M x 36	(1) 2M x 36	None
40MB	(1) 4M x 36	(1) 4M x 36	(1) 1M x 36	(1) 1M x 36
48MB	(1) 2M x 36	(1) 2M x 36	(1) 8M x 36	None
48MB	(1) 4M x 36	(1) 4M x 36	(1) 4M x 36	None

Continued on next page. . .

ACTIVEI SYSTEMS, INC.  
 COMPACT

... continued from previous page

DRAM CONFIGURATION (CON'T)				
Size	Bank 0	Bank 1	Bank 2	Bank 3
48MB	(1) 4M x 36	(1) 4M x 36	(1) 2M x 36	(1) 2M x 36
64MB	(1) 16M x 36	None	None	None
64MB	(1) 8M x 36	(1) 8M x 36	None	None
64MB	(1) 4M x 36	(1) 4M x 36	(1) 8M x 36	None
64MB	(1) 4M x 36	(1) 4M x 36	(1) 4M x 36	(1) 4M x 36
68MB	(1) 8M x 36	(1) 8M x 36	(1) 1M x 36	None
72MB	(1) 1M x 36	(1) 1M x 36	(1) 16M x 36	None
72MB	(1) 8M x 36	(1) 8M x 36	(1) 2M x 36	None
72MB	(1) 8M x 36	(1) 8M x 36	(1) 1M x 36	(1) 1M x 36
80MB	(1) 2M x 36	(1) 2M x 36	(1) 16M x 36	None
80MB	(1) 2M x 36	(1) 2M x 36	(1) 8M x 36	(1) 8M x 36
80MB	(1) 8M x 36	(1) 8M x 36	(1) 4M x 36	None
80MB	(1) 8M x 36	(1) 8M x 36	(1) 2M x 36	(1) 2M x 36
96MB	(1) 4M x 36	(1) 4M x 36	(1) 16M x 36	None
96MB	(1) 8M x 36	(1) 8M x 36	(1) 8M x 36	None
96MB	(1) 8M x 36	(1) 8M x 36	(1) 4M x 36	(1) 4M x 36
128MB	(1) 32M x 36	None	None	None
128MB	(1) 16M x 36	(1) 16M x 36	None	None
128MB	(1) 8M x 36	(1) 8M x 36	(1) 16M x 36	None
128MB	(1) 8M x 36	(1) 8M x 36	(1) 8M x 36	(1) 8M x 36
132MB	(1) 16M x 36	(1) 16M x 36	(1) 1M x 36	None
136MB	(1) 1M x 36	(1) 1M x 36	(1) 32M x 36	None
136MB	(1) 1M x 36	(1) 1M x 36	(1) 16M x 36	(1) 16M x 36
136MB	(1) 16M x 36	(1) 16M x 36	(1) 2M x 36	None
144MB	(1) 2M x 36	(1) 2M x 36	(1) 32M x 36	None
144MB	(1) 2M x 36	(1) 2M x 36	(1) 16M x 36	(1) 16M x 36
144MB	(1) 16M x 36	(1) 16M x 36	(1) 4M x 36	None
144MB	(1) 16M x 36	(1) 16M x 36	(1) 2M x 36	(1) 2M x 36
160MB	(1) 4M x 36	(1) 4M x 36	(1) 32M x 36	None
160MB	(1) 4M x 36	(1) 4M x 36	(1) 16M x 36	(1) 16M x 36
160MB	(1) 16M x 36	(1) 16M x 36	(1) 8M x 36	None
160MB	(1) 16M x 36	(1) 16M x 36	(1) 4M x 36	(1) 4M x 36
192MB	(1) 8M x 36	(1) 8M x 36	(1) 32M x 36	None
192MB	(1) 8M x 36	(1) 8M x 36	(1) 16M x 36	(1) 16M x 36
192MB	(1) 16M x 36	(1) 16M x 36	(1) 16M x 36	None
192MB	(1) 16M x 36	(1) 16M x 36	(1) 8M x 36	(1) 8M x 36
256MB	(1) 32M x 36	(1) 32M x 36	None	None
256MB	(1) 16M x 36	(1) 16M x 36	(1) 32M x 36	None
256MB	(1) 16M x 36	(1) 16M x 36	(1) 16M x 36	(1) 16M x 36
260MB	(1) 32M x 36	(1) 32M x 36	(1) 1M x 36	None
264MB	(1) 1M x 36	(1) 1M x 36	(1) 32M x 36	(1) 32M x 36

Continued on next page...

ACTIVEI SYSTEMS, INC.  
COMPACT

... continued from previous page

DRAM CONFIGURATION (CON'T)				
Size	Bank 0	Bank 1	Bank 2	Bank 3
264MB	(1) 32M x 36	(1) 32M x 36	(1) 2M x 36	None
264MB	(1) 32M x 36	(1) 32M x 36	(1) 1M x 36	(1) 1M x 36
272MB	(1) 2M x 36	(1) 2M x 36	(1) 32M x 36	(1) 32M x 36
272MB	(1) 32M x 36	(1) 32M x 36	(1) 4M x 36	None
272MB	(1) 32M x 36	(1) 32M x 36	(1) 2M x 36	(1) 2M x 36
288MB	(1) 4M x 36	(1) 4M x 36	(1) 32M x 36	(1) 32M x 36
288MB	(1) 32M x 36	(1) 32M x 36	(1) 8M x 36	None
288MB	(1) 32M x 36	(1) 32M x 36	(1) 4M x 36	(1) 4M x 36
320MB	(1) 8M x 36	(1) 8M x 36	(1) 32M x 36	(1) 32M x 36
320MB	(1) 32M x 36	(1) 32M x 36	(1) 16M x 36	None
320MB	(1) 32M x 36	(1) 32M x 36	(1) 8M x 36	(1) 8M x 36
384MB	(1) 16M x 36	(1) 16M x 36	(1) 32M x 36	(1) 32M x 36
384MB	(1) 32M x 36	(1) 32M x 36	(1) 32M x 36	None
384MB	(1) 32M x 36	(1) 32M x 36	(1) 16M x 36	(1) 16M x 36
512MB	(1) 32M x 36	(1) 32M x 36	(1) 32M x 36	(1) 32M x 36

Note: Board accepts EDO memory.

CACHE CONFIGURATION		
Size	Bank 0	TAG
256KB	(2) 32K x 32	Unidentified
512KB	(2) 64K x 32	Unidentified

CPU SPEED SELECTION (CYRIX)						
CPU speed	Clock speed	Multiplier	JP1A	JP1B	JP1C	JP2
120MHz	50MHz	2x	Open	Closed	Closed	3 & 4
133MHz	55MHz	2x	Open	Open	Open	3 & 4
150MHz	60MHz	2x	Open	Open	Closed	3 & 4
166MHz	66MHz	2x	Open	Closed	Open	3 & 4

Note: Pins designated should be in the closed position.

CPU SPEED SELECTION (AMD)						
CPU speed	Clock speed	Multiplier	JP1A	JP1B	JP1C	JP2
75MHz	50MHz	1.5x	Open	Closed	Closed	4 & 5
90MHz	60MHz	1.5x	Open	Open	Closed	4 & 5
100MHz	66MHz	1.5x	Open	Closed	Open	4 & 5
120MHz	60MHz	1.5x	Open	Open	Closed	4 & 5
133MHz	66MHz	1.5x	Open	Closed	Open	4 & 5

Note: Pins designated should be in the closed position.

Continued on next page. . .

ACTIVEI SYSTEMS, INC.  
COMPACT

... continued from previous page

CPU SPEED SELECTION (INTEL)						
CPU speed	Clock speed	Multiplier	JP1A	JP1B	JP1C	JP2
75MHz	50MHz	1.5x	Open	Closed	Closed	4 & 5
90MHz	60MHz	1.5x	Open	Open	Closed	4 & 5
100MHz	66MHz	1.5x	Open	Closed	Open	4 & 5
120MHz	60MHz	2x	Open	Open	Closed	3 & 4
133MHz	66MHz	2x	Open	Closed	Open	3 & 4
150MHz	60MHz	2.5x	Open	Open	Closed	1 & 2, 3 & 4
166MHz	66MHz	2.5x	Open	Closed	Open	1 & 2, 3 & 4
200MHz	66MHz	3x	Open	Closed	Open	1 & 2, 4 & 5

Note: Pins designated should be in the closed position.

CPU VOLTAGE SELECTION (SINGLE)				
Voltage	JP3A	JP3B	JP4A	JP4B
3.3v	Open	Open	Pins 1 & 2 closed	Pins 1 & 2 closed
3.5v	Pins 2 & 3 closed	Open	Pins 1 & 2 closed	Pins 1 & 2 closed

CPU VOLTAGE SELECTION (DUAL)					
Voltage	V core	JP3A	JP3B	JP4A	JP4B
3.3v	2.5v	Open	1 & 2	2 & 3	2 & 3
3.3v	2.6v	2 & 3	1 & 2	2 & 3	2 & 3
3.3v	2.7v	1 & 2	2 & 3	2 & 3	2 & 3
3.3v	2.8v	Open	2 & 3	2 & 3	2 & 3
3.3v	2.92v	2 & 3	2 & 3	2 & 3	2 & 3
3.3v	3.2v	1 & 2	Open	2 & 3	2 & 3

Note: Pins designated should be in the closed position.