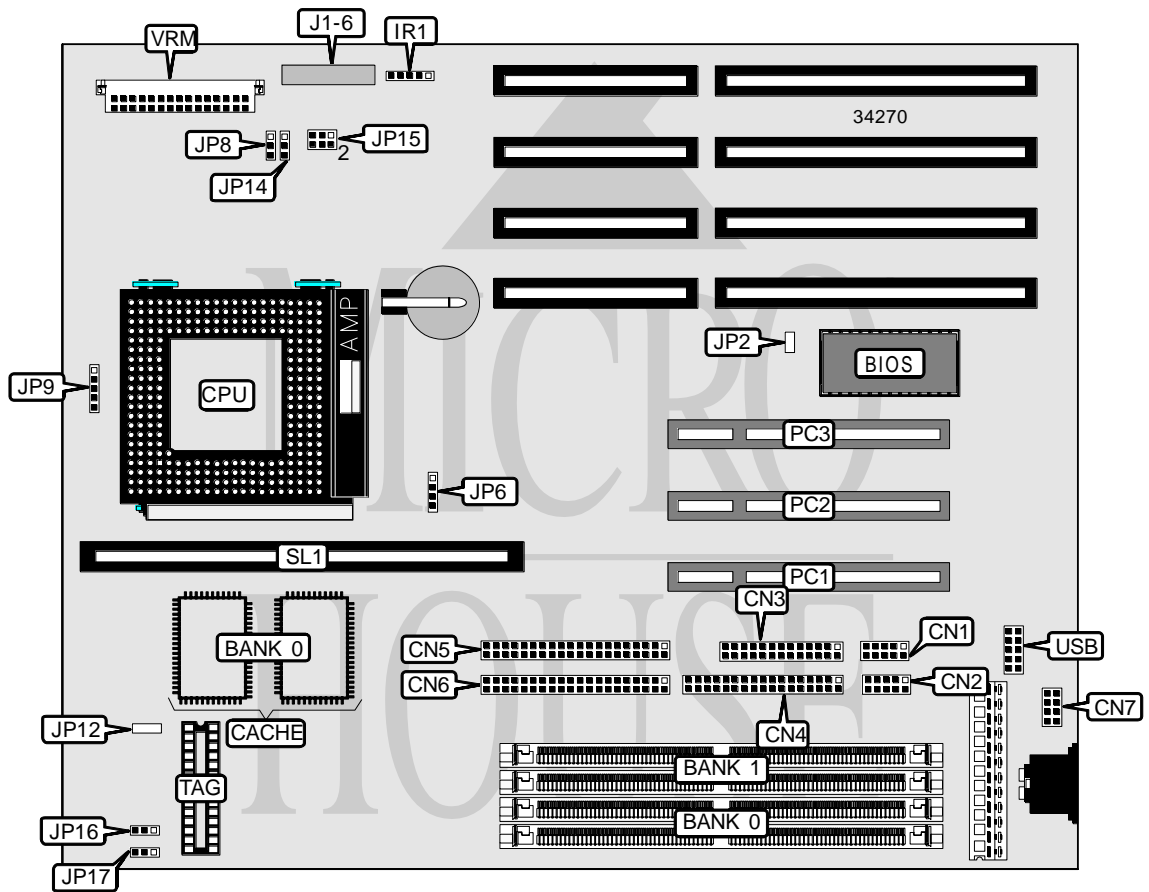


ACTIVEI SYSTEMS, INC.

FREEWAY 15

Processor	CX M1/AM K5/Pentium
Processor Speed	75/90/100/120/133/150/166/200MHz
Chip Set	Intel
Video Chip Set	None
Maximum Onboard Memory	512MB (EDO supported)
Maximum Video Memory	None
Cache	256/512KB
BIOS	Award
Dimensions	254mm x 218mm
I/O Options	32-bit PCI slots (3), floppy drive interface, green PC connector, IDE interfaces (2), parallel port, PS/2 mouse interface, serial ports (2), cache slot, IR connector, VRM connector, USB connector
NPU Options	None



Continued on next page. . .

... continued from previous page

CONNECTIONS			
Purpose	Location	Purpose	Location
Serial port 2	CN1	Reset switch	J2
Serial port 1	CN2	Green PC connector	J3
Parallel port	CN3	IDE interface LED	J4
Floppy drive interface	CN4	Turbo LED	J5
IDE interface 2	CN5	Speaker	J6
IDE interface 1	CN6	32-bit PCI slots	PC1 – PC3
PS/2 mouse interface	CN7	Cache slot	SL1
IR connector	IR1	USB connector	USB
Power LED & keylock	J1	VRM connector	VRM

USER CONFIGURABLE SETTINGS		
Function	Label	Position
í Factory configured - do not alter (CMOS)	JP2	Unidentified
í Factory configured - do not alter	JP12	Unidentified

DRAM CONFIGURATION		
Size	Bank 0	Bank 1
8MB	(2) 1M x 36	None
16MB	(2) 2M x 36	None
16MB	(2) 1M x 36	(2) 1M x 36
24MB	(2) 2M x 36	(2) 1M x 36
32MB	(2) 4M x 36	None
32MB	(2) 2M x 36	(2) 2M x 36
40MB	(2) 4M x 36	(2) 1M x 36
48MB	(2) 4M x 36	(2) 2M x 36
64MB	(2) 8M x 36	None
64MB	(2) 4M x 36	(2) 4M x 36
72MB	(2) 8M x 36	(2) 1M x 36
80MB	(2) 8M x 36	(2) 2M x 36
96MB	(2) 8M x 36	(2) 4M x 36
128MB	(2) 8M x 36	(2) 8M x 36
128MB	(2) 16M x 36	None
136MB	(2) 16M x 36	(2) 1M x 36
144MB	(2) 16M x 36	(2) 2M x 36
160MB	(2) 16M x 36	(2) 4M x 36
192MB	(2) 16M x 36	(2) 8M x 36
256MB	(2) 16M x 36	(2) 16M x 36
256MB	(2) 32M x 36	None

Continued on next page. . .

... continued from previous page

DRAM CONFIGURATION (CON'T)		
Size	Bank 0	Bank 1
264MB	(2) 32M x 36	(2) 1M x 36
272MB	(2) 32M x 36	(2) 2M x 36
288MB	(2) 32M x 36	(2) 4M x 36
320MB	(2) 32M x 36	(2) 8M x 36
384MB	(2) 32M x 36	(2) 16M x 36
512MB	(2) 32M x 36	(2) 32M x 36

Note: Board accepts EDO memory.

CACHE CONFIGURATION			
Size	Bank 0	SL1	TAG
256KB	(2) 32K x 32	Not installed	(1) 16K/32K x 8
512KB (A)	(2) 32K x 32	256KB module installed	(1) 16K/32K x 8
512KB (B)	(2) 64K x 32	Not installed	(1) 16K/32K x 8

CACHE JUMPER CONFIGURATION		
Size	JP16	JP17
256KB	Open	Pins 2 & 3 closed
512KB (A)	Open	Pins 2 & 3 closed
512KB (B)	Pins 2 & 3 closed	Pins 1 & 2 closed

CPU SPEED SELECTION (CYRIX)				
CPU speed	Clock speed	Multiplier	JP6	JP9
120MHz	50MHz	2x	1 & 2, 3 & 4	2 & 3
133MHz	55MHz	2x	Open	2 & 3
150MHz	60MHz	2x	3 & 4	2 & 3
166MHz	66MHz	2x	1 & 2	2 & 3

Note: Pins designated should be in the closed position.

CPU SPEED SELECTION (AMD)				
CPU speed	Clock speed	Multiplier	JP6	JP9
75MHz	50MHz	1.5x	1 & 2, 3 & 4	1 & 2
90MHz	60MHz	1.5x	3 & 4	1 & 2
100MHz	66MHz	1.5x	1 & 2	1 & 2
120MHz	60MHz	1.5x	3 & 4	1 & 2
133MHz	66MHz	1.5x	1 & 2	1 & 2

Note: Pins designated should be in the closed position.

Continued on next page...

ACTIVEI SYSTEMS, INC.
 FREEWAY 15

... continued from previous page

CPU SPEED SELECTION (INTEL)				
CPU speed	Clock speed	Multiplier	JP6	JP9
75MHz	50MHz	1.5x	1 & 2, 3 & 4	1 & 2
90MHz	60MHz	1.5x	3 & 4	1 & 2
100MHz	66MHz	1.5x	1 & 2	1 & 2
120MHz	60MHz	2x	3 & 4	2 & 3
133MHz	66MHz	2x	1 & 2	2 & 3
150MHz	60MHz	2.5x	3 & 4	2 & 3, 4 & 5
166MHz	66MHz	2.5x	1 & 2	2 & 3, 4 & 5
200MHz	66MHz	3x	1 & 2	4 & 5

Note: Pins designated should be in the closed position.

CPU VOLTAGE SELECTION (SINGLE)			
Voltage	JP8	JP14	JP15
3.3v	Open	Open	Pins 3 & 5, 4 & 6 closed
3.5v	Pins 2 & 3 closed	Open	Pins 3 & 5, 4 & 6 closed

CPU VOLTAGE SELECTION (DUAL)				
Voltage	V core	JP8	JP14	JP15
3.3v	2.5v	Open	2 & 3	1 & 3, 2 & 4
3.3v	2.6v	2 & 3	2 & 3	1 & 3, 2 & 4
3.3v	2.7v	1 & 2	1 & 2	1 & 3, 2 & 4
3.3v	2.8v	Open	1 & 2	1 & 3, 2 & 4
3.3v	2.93v	2 & 3	1 & 2	1 & 3, 2 & 4
3.3v	3.2v	1 & 2	Open	

Note: Pins designated should be in the closed position.