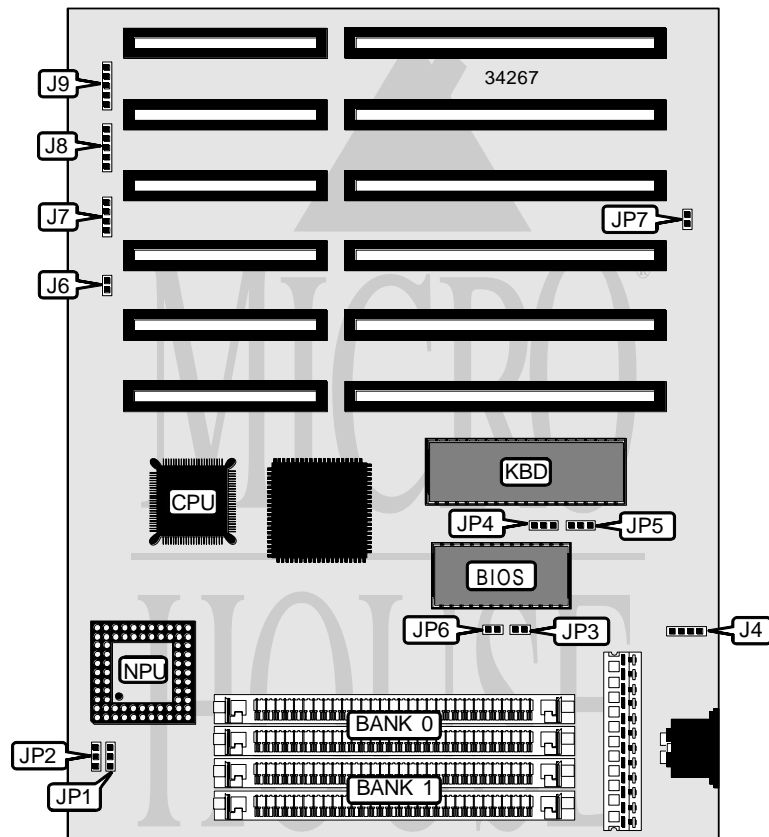


UNIDENTIFIED

80386SX-33/40 (ALIM1217-40)

Processor	80386SX
Processor Speed	25/33/40MHz
Chip Set	ALI
Video Chip Set	None
Maximum Onboard Memory	16MB
Maximum Video Memory	None
Cache	None
BIOS	AMI
Dimensions	220mm x 170mm
I/O Options	None
NPU Options	80387SX



Continued on next page...

UNIDENTIFIED

80386SX-33/40 (ALIM1217-40)

... continued from previous page

USER CONFIGURABLE SETTINGS		
Function	Label	Position
í Factory configured - do not alter	J4	Unidentified
í Factory configured - do not alter	J6	Unidentified
í Factory configured - do not alter	J7	Unidentified
í Factory configured - do not alter	J8	Unidentified
í Factory configured - do not alter	J9	Unidentified
NPU synchronous with CPU	JP2	Pins 1 & 2 closed
NPU asynchronous with CPU	JP2	Pins 2 & 3 closed
í CMOS memory normal operation	JP3	Open
CMOS memory clear	JP3	Closed
Monitor type select color	JP4	Pins 2 & 3 closed
Monitor type select monochrome	JP4	Pins 1 & 2 closed
Parity check enabled	JP6	Open
Parity check disabled	JP6	Closed
í Factory configured - do not alter	JP7	Open

DRAM CONFIGURATION		
Size	Bank 0	Bank 1
512KB	(2) 256K x 9	None
1MB	(2) 256K x 9	(2) 256K x 9
2MB	(2) 1M x 9	None
4MB	(2) 1M x 9	(2) 1M x 9
8MB	(2) 4M x 9	None
16MB	(2) 4M x 9	(2) 4M x 9

CPU SPEED SELECTION		
Speed	JP1	JP5
25MHz	Pins 1 & 2 closed	Pins 2 & 3 closed
33MHz	Pins 2 & 3 closed	Pins 2 & 3 closed
40MHz	Pins 1 & 2 closed	Pins 1 & 2 closed