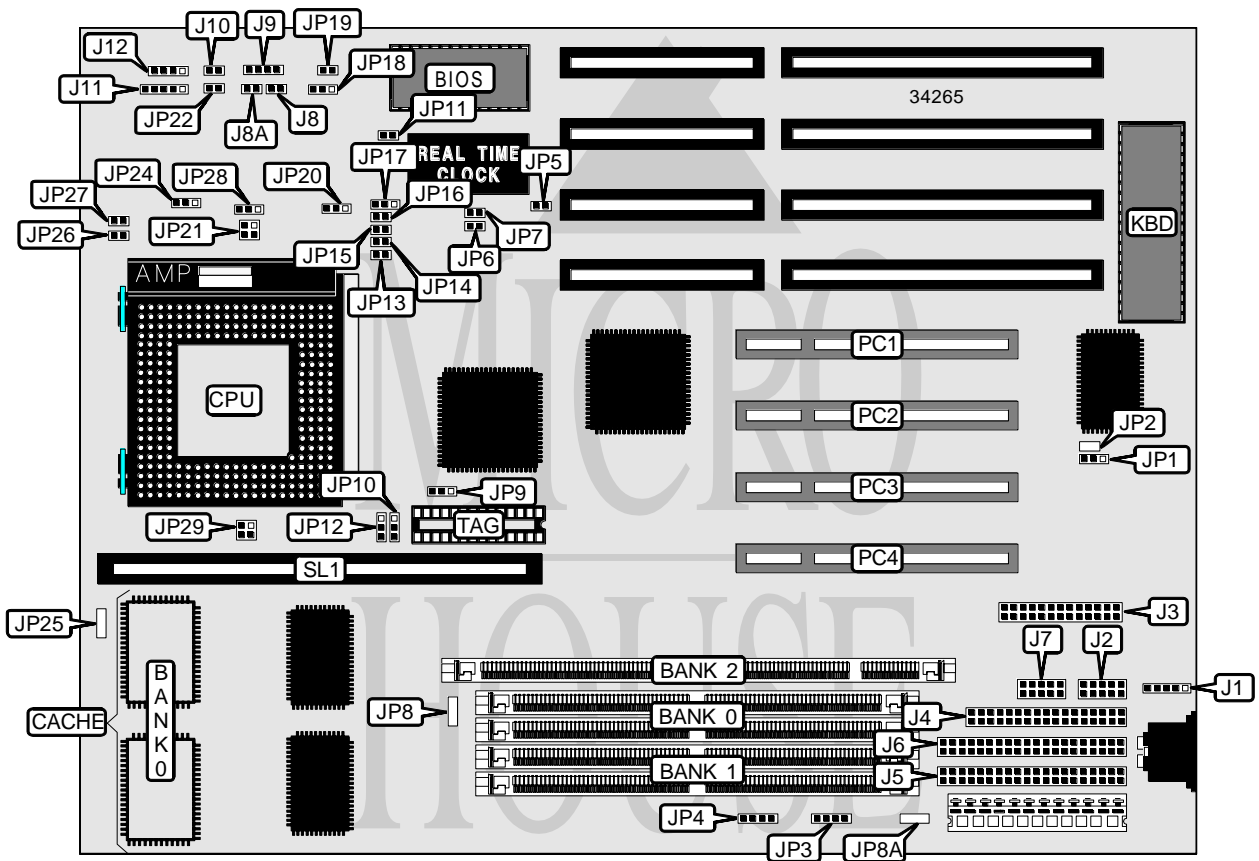


BEK-TRONIC TECHNOLOGY, INC.

BEK-5731

Processor	Pentium
Processor Speed	75/90/100/120/125/133/150/166/180/200MHz
Chip Set	Intel
Video Chip Set	None
Maximum Onboard Memory	128MB (EDO supported)
Maximum Video Memory	None
Cache	256/512KB
BIOS	Award
Dimensions	280mm x 220mm
I/O Options	32-bit PCI slots (4), green PC connector, floppy drive interface, IDE interfaces (2), parallel port, PS/2 mouse interface, serial ports (2), cache slot, IR connector, USB connectors (2)
NPU Options	None



Continued on next page . . .

... continued from previous page

CONNECTIONS			
Purpose	Location	Purpose	Location
PS/2 mouse interface	J1	IR connector	J9
Serial port 1	J2	Reset switch	J10
Parallel port	J3	Power LED & keylock	J11
Floppy drive interface	J4	Speaker	J12
IDE interface 1	J5	USB connector 2	JP3
IDE interface 2	J6	USB connector 1	JP4
Serial port 2	J7	Green PC connector	JP22
IDE interface LED	J8	32-bit PCI slots	PC1 – PC4
Turbo LED	J8A	Cache slot	SL1

USER CONFIGURABLE SETTINGS		
Function	Label	Position
On board I/O enabled	JP1	Pins 1 & 2 closed
On board I/O disabled	JP1	Pins 2 & 3 closed
í Factory configured - do not alter	JP2	Unidentified
í Factory configured - do not alter	JP8	Unidentified
í Factory configured - do not alter	JP8A	Unidentified
í Pipeline address enabled	JP13	Closed
Pipeline address disabled	JP13	Open
í Factory configured - do not alter	JP16	Unidentified
í Cache write select write back	JP17	Pins 2 & 3 closed
Cache write select write through	JP17	Pins 1 & 2 closed
Flash BIOS voltage select 12v	JP18	Pins 1 & 2 closed
Flash BIOS voltage select 5v	JP18	Pins 2 & 3 closed
í Factory configured - do not alter	JP25	Unidentified
CPU regulator voltage select 1 regulator voltage	JP28	Pins 1 & 2 closed
CPU regulator voltage select 2 regulator voltage	JP28	Pins 2 & 3 closed

DRAM CONFIGURATION		
Size	Bank 0	Bank 1
8MB	(2) 1M x 36	None
16MB	(2) 2M x 36	None
16MB	(2) 1M x 36	(2) 1M x 36
24MB	(2) 2M x 36	(2) 1M x 36
32MB	(2) 4M x 36	None
32MB	(2) 2M x 36	(2) 2M x 36
48MB	(2) 4M x 36	(2) 2M x 36
64MB	(2) 8M x 36	None
64MB	(2) 4M x 36	(2) 4M x 36
96MB	(2) 8M x 36	(2) 4M x 36
128MB	(2) 8M x 36	(2) 8M x 36

Continued on next page...

BEK-TRONIC TECHNOLOGY, INC.

BEK-5731

... continued from previous page

DIMM CONFIGURATION	
Size	Bank 2
8MB	(1) 1M x 64
16MB	(1) 2M x 64
32MB	(1) 4M x 64
64MB	(1) 8M x 64

CACHE CONFIGURATION			
Size	Bank 0	SL1	TAG
256KB (A)	(2) 32K x 32	Not installed	(1) 32K x 8
256KB (B)	None	256KB module installed	(1) 32K x 8
512KB (A)	(2) 32K x 32	256KB module installed	(1) 32K x 8
512KB (B)	(2) 64K x 32	Not installed	(1) 32K x 8
512KB (C)	None	512KB module installed	(1) 32K x 8

CACHE JUMPER CONFIGURATION				
Size	JP10	JP12	JP14	JP15
256KB (A)	Pins 2 & 3 closed	Pins 2 & 3 closed	Open	Closed
256KB (B)	Pins 2 & 3 closed	Pins 2 & 3 closed	Open	Open
512KB (A)	Pins 1 & 2 closed	Pins 1 & 2 closed	Closed	Open
512KB (B)	Pins 1 & 2 closed	Pins 1 & 2 closed	Closed	Open
512KB (C)	Pins 2 & 3 closed	Pins 2 & 3 closed	Open	Closed

CACHE TAG VOLTAGE CONFIGURATION	
Voltage	JP9
3.3v	Pins 2 & 3 closed
5v	Pins 1 & 2 closed

CPU SPEED SELECTION							
CPU speed	Clock speed	Multiplier	JP5	JP6	JP7	JP26	JP27
75MHz	50MHz	1.5x	Open	Closed	Closed	Open	Open
90MHz	60MHz	1.5x	Closed	Open	Closed	Open	Open
100MHz	66MHz	1.5x	Closed	Open	Open	Open	Open
100MHz	50MHz	2x	Closed	Closed	Closed	Open	Closed
120MHz	60MHz	2x	Closed	Open	Closed	Open	Closed
125MHz	50MHz	2.5x	Open	Closed	Closed	Open	Closed
133MHz	66MHz	2x	Closed	Open	Open	Open	Closed
150MHz	60MHz	2.5x	Closed	Open	Closed	Closed	Closed
166MHz	66MHz	2.5x	Closed	Open	Open	Closed	Closed
180MHz	60MHz	3x	Closed	Open	Closed	Closed	Open
200MHz	66MHz	3x	Closed	Open	Open	Closed	Open

Continued on next page...

... continued from previous page

CPU TYPE SELECTION		
Type	JP21	JP29
P54C	Pins 1 & 3, 2 & 4 closed	Pins 1 & 3, 2 & 4 closed
P55C	Open	Open

CPU VOLTAGE SELECTION (SINGLE)	
Voltage	JP24
2.5v	Pins 1 & 2 closed
3.4v	Pins 2 & 3 closed

CPU VOLTAGE SELECTION (DUAL)			
Voltage	V core	JP20	JP24
2.5v	3v	Pins 2 & 3 closed	Pins 1 & 2 closed
2.5v	3.4v	Pins 1 & 2 closed	Pins 1 & 2 closed
3.4v	3v	Pins 2 & 3 closed	Pins 2 & 3 closed
3.4v	3.4v	Pins 1 & 2 closed	Pins 2 & 3 closed

CMOS SELECTION		
Setting	JP11	JP19
í CMOS memory normal operation	Open	Open
CMOS memory clear	Closed	Closed