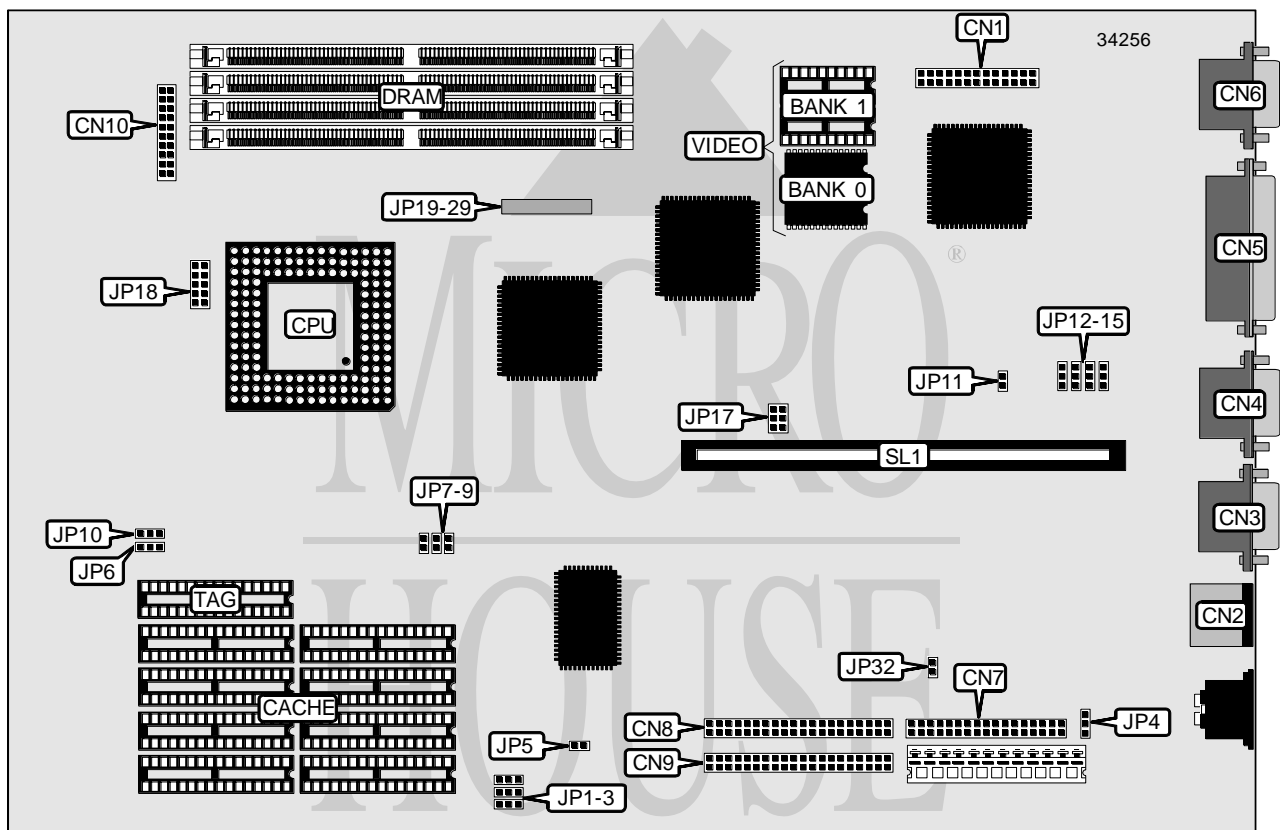


EPSON, INC.  
ACTION PC 7000SER

<b>Processor</b>	CX486S/80486SX/SL80486SX/SL80486SX2/CX486DX/UMCU5S/ AM486DX/80486DX/SL80486DX/CX486DX2/UMCU5DS/AM486DX2/ SL80486DX2/80486DX2/AM486DX4/80486DX4/SL80486DX4/P24D/P24T
<b>Processor Speed</b>	25/33/40/50(internal)/50/66(internal)/75(internal)/100(internal)MHz
<b>Chip Set</b>	Unidentified
<b>Video Chip Set</b>	Unidentified
<b>Maximum Onboard Memory</b>	128MB
<b>Maximum Video Memory</b>	Unidentified
<b>Cache</b>	128/256/512/1024KB
<b>BIOS</b>	Unidentified
<b>Dimensions</b>	330mm x 218mm
<b>I/O Options</b>	Floppy drive interface, IDE interfaces (2), parallel port, PS/2 mouse port, serial ports (2), VGA feature connector, VGA port, riser slot
<b>NPU Options</b>	None



Continued on next page . . .

EPSON, INC.  
ACTION PC 7000SER

... continued from previous page

CONNECTIONS			
Purpose	Location	Purpose	Location
VGA feature connector	CN1	VGA port	CN6
PS/2 mouse port	CN2	Floppy drive interface	CN7
Serial port 1	CN3	IDE interface 2	CN8
Serial port 2	CN4	IDE interface 1	CN9
Parallel port	CN5	Riser slot	SL1

USER CONFIGURABLE SETTINGS		
Function	Label	Position
í Factory configured - do not alter	CN10	Unidentified
í Flash BIOS voltage select 5v	JP4	Pins 1 & 2 closed
Flash BIOS voltage select 12v	JP4	Pins 2 & 3 closed
BIOS type select EPROM	JP4	Open
í PCI IDE controller enabled	JP5	Open
PCI IDE controller disabled	JP5	Closed
í CMOS memory normal operation	JP11	Open
CMOS memory clear	JP11	Closed
í On board I/O enabled	JP12	Pins 1 & 2 closed
On board I/O disabled	JP12	Pins 2 & 3 closed
í On board video enabled	JP15	Pins 1 & 2 closed
On board video disabled	JP15	Pins 2 & 3 closed

DRAM CONFIGURATION				
Size	Bank 0	Bank 1	Bank 2	Bank 3
2MB	(1) 256K x 36	(1) 256K x 36	None	None
2MB	(1) 512K x 36	None	None	None
4MB	(1) 256K x 36	(1) 256K x 36	(1) 256K x 36	(1) 256K x 36
4MB	(1) 256K x 36	(1) 256K x 36	(1) 512K x 36	None
4MB	(1) 512K x 36	None	(1) 512K x 36	None
4MB	(1) 512K x 36	(1) 512K x 36	None	None
4MB	(1) 1M x 36	None	None	None
6MB	(1) 256K x 36	(1) 256K x 36	(1) 512K x 36	(1) 512K x 36
6MB	(1) 256K x 36	(1) 256K x 36	(1) 1M x 36	None
6MB	(1) 512K x 36	(1) 512K x 36	(1) 512K x 36	None
6MB	(1) 512K x 36	(1) 512K x 36	(1) 256K x 36	(1) 256K x 36
8MB	(1) 512K x 36	(1) 512K x 36	(1) 512K x 36	(1) 512K x 36
8MB	(1) 512K x 36	(1) 512K x 36	(1) 1M x 36	None
8MB	(1) 1M x 36	None	(1) 1M x 36	None
8MB	(1) 1M x 36	(1) 1M x 36	None	None
8MB	(1) 2M x 36	None	None	None
10MB	(1) 256K x 36	(1) 256K x 36	(1) 1M x 36	(1) 1M x 36
10MB	(1) 256K x 36	(1) 256K x 36	(1) 2M x 36	None
10MB	(1) 1M x 36	(1) 1M x 36	(1) 256K x 36	(1) 256K x 36

Continued on next page...

EPSON, INC.  
ACTION PC 7000SER

... continued from previous page

DRAM CONFIGURATION (CON'T)				
Size	Bank 0	Bank 1	Bank 2	Bank 3
10MB	(1) 1M x 36	(1) 1M x 36	(1) 512K x 36	None
12MB	(1) 512K x 36	(1) 512K x 36	(1) 1M x 36	(1) 1M x 36
12MB	(1) 512K x 36	(1) 512K x 36	(1) 2M x 36	None
12MB	(1) 1M x 36	(1) 1M x 36	(1) 1M x 36	None
12MB	(1) 1M x 36	(1) 1M x 36	(1) 512K x 36	(1) 512K x 36
16MB	(1) 1M x 36	(1) 1M x 36	(1) 1M x 36	(1) 1M x 36
16MB	(1) 1M x 36	(1) 1M x 36	(1) 2M x 36	None
16MB	(1) 2M x 36	None	(1) 2M x 36	None
16MB	(1) 2M x 36	(1) 2M x 36	None	None
16MB	(1) 4M x 36	None	None	None
18MB	(1) 256K x 36	(1) 256K x 36	(1) 2M x 36	(1) 2M x 36
18MB	(1) 256K x 36	(1) 256K x 36	(1) 4M x 36	None
18MB	(1) 2M x 36	(1) 2M x 36	(1) 256K x 36	(1) 256K x 36
18MB	(1) 2M x 36	(1) 2M x 36	(1) 512K x 36	None
20MB	(1) 512K x 36	(1) 512K x 36	(1) 2M x 36	(1) 2M x 36
20MB	(1) 512K x 36	(1) 512K x 36	(1) 4M x 36	None
20MB	(1) 2M x 36	(1) 2M x 36	(1) 512K x 36	(1) 512K x 36
20MB	(1) 2M x 36	(1) 2M x 36	(1) 1M x 36	None
24MB	(1) 1M x 36	(1) 1M x 36	(1) 2M x 36	(1) 2M x 36
24MB	(1) 1M x 36	(1) 1M x 36	(1) 4M x 36	None
24MB	(1) 2M x 36	(1) 2M x 36	(1) 2M x 36	None
24MB	(1) 2M x 36	(1) 2M x 36	(1) 1M x 36	(1) 1M x 36
32MB	(1) 2M x 36	(1) 2M x 36	(1) 2M x 36	(1) 2M x 36
32MB	(1) 2M x 36	(1) 2M x 36	(1) 4M x 36	None
32MB	(1) 4M x 36	None	(1) 4M x 36	None
32MB	(1) 4M x 36	(1) 4M x 36	None	None
32MB	(1) 8M x 36	None	None	None
34MB	(1) 256K x 36	(1) 256K x 36	(1) 4M x 36	(1) 4M x 36
34MB	(1) 256K x 36	(1) 256K x 36	(1) 8M x 36	None
34MB	(1) 4M x 36	(1) 4M x 36	(1) 256K x 36	(1) 256K x 36
34MB	(1) 4M x 36	(1) 4M x 36	(1) 512K x 36	None
36MB	(1) 512K x 36	(1) 512K x 36	(1) 4M x 36	(1) 4M x 36
36MB	(1) 512K x 36	(1) 512K x 36	(1) 8M x 36	None
36MB	(1) 4M x 36	(1) 4M x 36	(1) 512K x 36	(1) 512K x 36
36MB	(1) 4M x 36	(1) 4M x 36	(1) 1M x 36	None
40MB	(1) 1M x 36	(1) 1M x 36	(1) 4M x 36	(1) 4M x 36
40MB	(1) 1M x 36	(1) 1M x 36	(1) 8M x 36	None
40MB	(1) 4M x 36	(1) 4M x 36	(1) 1M x 36	(1) 1M x 36
40MB	(1) 4M x 36	(1) 4M x 36	(1) 2M x 36	None
48MB	(1) 2M x 36	(1) 2M x 36	(1) 4M x 36	(1) 4M x 36
48MB	(1) 2M x 36	(1) 2M x 36	(1) 8M x 36	None
48MB	(1) 4M x 36	(1) 4M x 36	(1) 4M x 36	None

Continued on next page. . .

EPSON, INC.  
ACTION PC 7000SER

... continued from previous page

DRAM CONFIGURATION (CON'T)				
Size	Bank 0	Bank 1	Bank 2	Bank 3
48MB	(1) 4M x 36	(1) 4M x 36	(1) 2M x 36	(1) 2M x 36
64MB	(1) 4M x 36	(1) 4M x 36	(1) 4M x 36	(1) 4M x 36
64MB	(1) 4M x 36	(1) 4M x 36	(1) 8M x 36	None
64MB	(1) 8M x 36	None	(1) 8M x 36	None
64MB	(1) 8M x 36	(1) 8M x 36	None	None
66MB	(1) 256K x 36	(1) 256K x 36	(1) 8M x 36	(1) 8M x 36
66MB	(1) 8M x 36	(1) 8M x 36	(1) 256K x 36	(1) 256K x 36
66MB	(1) 8M x 36	(1) 8M x 36	(1) 512K x 36	None
68MB	(1) 8M x 36	(1) 8M x 36	(1) 512K x 36	(1) 512K x 36
68MB	(1) 8M x 36	(1) 8M x 36	(1) 1M x 36	None
72MB	(1) 1M x 36	(1) 1M x 36	(1) 8M x 36	(1) 8M x 36
72MB	(1) 8M x 36	(1) 8M x 36	(1) 1M x 36	(1) 1M x 36
72MB	(1) 8M x 36	(1) 8M x 36	(1) 2M x 36	None
80MB	(1) 2M x 36	(1) 2M x 36	(1) 8M x 36	(1) 8M x 36
80MB	(1) 8M x 36	(1) 8M x 36	(1) 2M x 36	(1) 2M x 36
80MB	(1) 8M x 36	(1) 8M x 36	(1) 4M x 36	None
96MB	(1) 4M x 36	(1) 4M x 36	(1) 8M x 36	(1) 8M x 36
96MB	(1) 8M x 36	(1) 8M x 36	(1) 4M x 36	(1) 4M x 36
96MB	(1) 8M x 36	(1) 8M x 36	(1) 8M x 36	None
128MB	(1) 8M x 36	(1) 8M x 36	(1) 8M x 36	(1) 8M x 36

Note: The location of the banks are unidentified.

CACHE CONFIGURATION			
Size	Bank 0	Bank 1	TAG
128KB	(4) 32K x 8	None	Unidentified
256KB (A)	(4) 32K x 8	(4) 32K x 8	Unidentified
256KB (B)	(4) 64K x 8	None	Unidentified
512KB (A)	(4) 64K x 8	(4) 64K x 8	Unidentified
512KB (B)	(4) 128K x 8	None	Unidentified
1MB	(4) 128K x 8	(4) 128K x 8	Unidentified

CACHE JUMPER CONFIGURATION						
Size	JP1	JP2	JP3	JP7	JP8	JP9
128KB	2 & 3	Open	Open	Open	Open	Open
256KB (A)	1 & 2	Open	Open	Open	Open	Closed
256KB (B)	2 & 3	1 & 2	Open	Open	Open	Closed
512KB (A)	1 & 2	2 & 3	Open	Closed	Open	Closed
512KB (B)	2 & 3	1 & 2	1 & 2	Closed	Open	Closed
1MB	1 & 2	2 & 3	2 & 3	Closed	Closed	Closed

Note: Pins designated should be in the closed position.

Continued on next page...

EPSON, INC.  
ACTION PC 7000SER

... continued from previous page

VIDEO MEMORY CONFIGURATION	
Note: The size of the video memory is unidentified.	

CPU SPEED SELECTION	
Speed	JP17
25MHz	Pins 1 & 2 closed
33MHz	Pins 1 & 2, 3 & 4, 5 & 6 closed
40MHz	Pins 1 & 2, 3 & 4 closed
50iMHz	Pins 1 & 2 closed
50MHz	Pins 5 & 6 closed
66iMHz	Pins 1 & 2, 3 & 4, 5 & 6 closed
75iMHz	Pins 1 & 2 closed
100iMHz	Pins 1 & 2, 3 & 4, 5 & 6 closed

CPU TYPE SELECTION					
Type	JP6	JP10	JP19	JP20	JP21
CX486S	1 & 2	2 & 3	Closed	Open	Open
80486SX	1 & 2	1 & 2	Open	Open	Open
SL80486SX	1 & 2	1 & 2	Open	Open	Open
SL80486SX2	1 & 2	1 & 2	Open	Open	Open
UMC U5S	2 & 3	1 & 2	Open	Open	Open
CX486DX	1 & 2	2 & 3	Closed	Open	Open
AM486DX	1 & 2	1 & 2	Open	Open	Open
(SL)AM486DX	1 & 2	1 & 2	Open	Open	Open
80486DX	1 & 2	1 & 2	Open	Open	Open
SL80486DX	1 & 2	1 & 2	Open	Open	N/A
UMC U5DS	2 & 3	1 & 2	Open	Open	Open
CX486DX2	1 & 2	2 & 3	Closed	Open	Open
AM486DX2	1 & 2	1 & 2	Open	Open	Open
(SL)AM486DX2	1 & 2	1 & 2	Open	Open	Open
80486DX2	1 & 2	1 & 2	Open	Open	Open
SL80486DX2	1 & 2	1 & 2	Open	Open	N/A
SL80486DX2 (2x)	1 & 2	1 & 2	Open	Open	2 & 3
CX486DX4	1 & 2	2 & 3	Closed	Open	Open
AM486DX4	1 & 2	1 & 2	Open	Open	Open
80486DX4	1 & 2	1 & 2	Open	Open	Open
SL80486DX4 (3x)	1 & 2	1 & 2	Open	Open	Open
P24D	1 & 2	1 & 2	Open	Open	Open
P24T	1 & 2	1 & 2	Open	Open	Open
CX5X86 M1SC	1 & 2	1 & 2	Open	Open	Open

Note: Pins designated should be in the closed position.

Continued on next page. . .

EPSON, INC.  
ACTION PC 7000SER

... continued from previous page

CPU TYPE SELECTION (CON'T)					
Type	JP22	JP23	JP24	JP25	JP26
CX486S	2 & 3	Open	2 & 3	1 & 2	2 & 3
80486SX	1 & 2	1 & 2	Open	Open	Open
SL80486SX	2 & 3	Open	Open	1 & 2	1 & 2
SL80486SX2	2 & 3	Open	Open	1 & 2	1 & 2
UMC U5S	1 & 2	1 & 2, 3 & 4	Open	2 & 3	Open
CX486DX	2 & 3	1 & 2	2 & 3	1 & 2	2 & 3
AM486DX	1 & 2	1 & 2	Open	Open	Open
(SL)AM486DX	2 & 3	1 & 2	3 & 4	1 & 2	Open
80486DX	1 & 2	1 & 2	Open	Open	Open
SL80486DX	2 & 3	1 & 2	Open	1 & 2	1 & 2
UMC U5DS	1 & 2	1 & 2, 3 & 4	Open	2 & 3	Open
CX486DX2	2 & 3	1 & 2	2 & 3	1 & 2	2 & 3
AM486DX2	1 & 2	1 & 2	Open	Open	Open
(SL)AM486DX2	2 & 3	1 & 2	3 & 4	1 & 2	1 & 2, 3 & 4
80486DX2	1 & 2	1 & 2	Open	Open	Open
SL80486DX2	2 & 3	1 & 2	Open	1 & 2	1 & 2
SL80486DX2 (2x)	2 & 3	1 & 2	Open	1 & 2	1 & 2
CX486DX4	2 & 3	1 & 2	2 & 3	1 & 2	2 & 3
AM486DX4	2 & 3	1 & 2	Open	Closed	Open
80486DX4	2 & 3	1 & 2	Open	Closed	Open
SL80486DX4 (3x)	2 & 3	1 & 2	Open	1 & 2	1 & 2
P24D	2 & 3	1 & 2	3 & 4	1 & 2	1 & 2, 3 & 4
P24T	2 & 3	2 & 3	Open	1 & 2	1 & 2
CX5X86 M1SC	2 & 3	1 & 2	1 & 2, 3 & 4	1 & 2	1 & 2, 3 & 4

Note: Pins designated should be in the closed position.

Continued on next page. . .

EPSON, INC.  
ACTION PC 7000SER

... continued from previous page

CPU TYPE SELECTION (CON'T)				
Type	JP27	JP28	JP29	JP32
CX486S	1 & 2	2 & 3	2 & 3, 4 & 5	Closed
80486SX	Open	2 & 3	Open	Closed
SL80486SX	Open	2 & 3	2 & 3, 4 & 5	Open
SL80486SX2	Open	2 & 3	2 & 3, 4 & 5	Open
UMC U5S	3 & 4	2 & 3	Open	Closed
CX486DX	2 & 3	1 & 2, 3 & 4	1 & 2, 3 & 4	Open
AM486DX	Open	1 & 2, 3 & 4	Open	Closed
(SL)AM486DX	Open	1 & 2, 3 & 4	2 & 3, 4 & 5	Open
80486DX	Open	1 & 2, 3 & 4	Open	Closed
SL80486DX	Open	1 & 2, 3 & 4	2 & 3, 4 & 5	Open
UMC U5DS	3 & 4	1 & 2, 3 & 4	Open	Closed
CX486DX2	2 & 3	1 & 2, 3 & 4	1 & 2, 3 & 4	Open
AM486DX2	Open	1 & 2, 3 & 4	Open	Closed
(SL)AM486DX2	Open	1 & 2, 3 & 4	2 & 3, 4 & 5	Open
80486DX2	Open	1 & 2, 3 & 4	Open	Closed
SL80486DX2	Open	1 & 2, 3 & 4	2 & 3, 4 & 5	Open
SL80486DX2 (2x)	Open	1 & 2, 3 & 4	2 & 3, 4 & 5	Open
CX486DX4	2 & 3	1 & 2, 3 & 4	1 & 2, 3 & 4	Open
AM486DX4	Open	1 & 2, 3 & 4	Closed	Open
80486DX4	Open	1 & 2, 3 & 4	Closed	Open
SL80486DX4 (3x)	Open	1 & 2, 3 & 4	2 & 3, 4 & 5	Open
P24D	Open	1 & 2, 3 & 4	2 & 3, 4 & 5	Open
P24T	1 & 2	1 & 2, 3 & 4	2 & 3, 4 & 5	Open
CX5X86 M1SC	Open	1 & 2, 3 & 4	2 & 3, 4 & 5	Open

Note: Pins designated should be in the closed position.

CPU VOLTAGE SELECTION	
Voltage	JP18
3.3v	Pins 3 & 4 closed
3.45v	Pins 5 & 6 closed
3.6v	Pins 7 & 8 closed
4v	Pins 9 & 10 closed
5v	Pins 1 & 2 closed

DMA CHANNEL SELECTION		
Channel	JP13	JP14
1	Pins 1 & 2 closed	Pins 1 & 2 closed
3	Pins 2 & 3 closed	Pins 2 & 3 closed