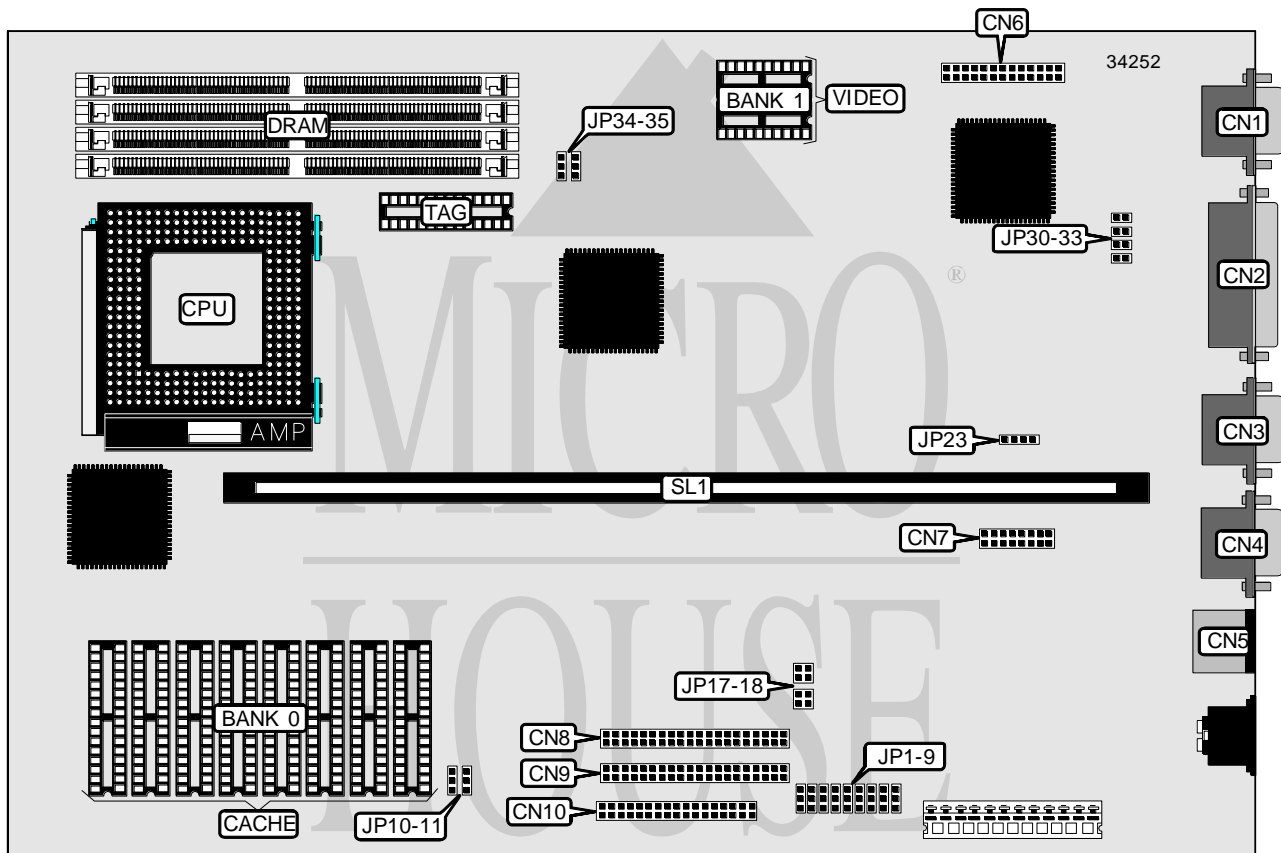


# EPSON, INC.

## ACTION PC 6000

<b>Processor</b>	Pentium
<b>Processor Speed</b>	60/66MHz
<b>Chip Set</b>	Unidentified
<b>Video Chip Set</b>	Cirrus Logic
<b>Maximum Onboard Memory</b>	128MB
<b>Maximum Video Memory</b>	2MB
<b>Cache</b>	256/1024KB
<b>BIOS</b>	Phoenix
<b>Dimensions</b>	330mm x 218mm
<b>I/O Options</b>	Floppy drive interface, green PC connector, game interface, IDE interfaces (2), parallel port, PS/2 mouse port, serial ports (2), VGA feature connector, VGA port, riser slot
<b>NPU Options</b>	None



Continued on next page. . .

EPSON, INC.  
ACTION PC 6000

... continued from previous page

CONNECTIONS			
Purpose	Location	Purpose	Location
VGA port	CN1	Game interface	CN7
Parallel port	CN2	IDE interface	CN8
Serial port 2	CN3	IDE interface	CN9
Serial port 1	CN4	Floppy drive interface	CN10
PS/2 mouse port	CN5	External battery	JP23
VGA feature connector	CN6	Riser slot	SL1

USER CONFIGURABLE SETTINGS		
Function	Label	Position
í Factory configured - do not alter	JP1	Unidentified
í Factory configured - do not alter	JP2	Unidentified
í Factory configured - do not alter	JP3	Unidentified
í Floppy drive interface enabled	JP4	Pins 1 & 2 closed
Floppy drive interface disabled	JP4	Pins 2 & 3 closed
í Serial port 1 enabled	JP5	Pins 1 & 2 closed
Serial port 1 disabled	JP5	Pins 2 & 3 closed
í Serial port 1 COM select COM1	JP6	Pins 1 & 2 closed
Serial port 1 COM select COM3	JP6	Pins 2 & 3 closed
í Serial port 2 enabled	JP7	Pins 1 & 2 closed
Serial port 2 disabled	JP7	Pins 2 & 3 closed
í Serial port 2 COM select COM2	JP8	Pins 1 & 2 closed
Serial port 2 COM select COM4	JP8	Pins 2 & 3 closed
í Game port enabled	JP9	Pins 1 & 2 closed
Game port disabled	JP9	Pins 2 & 3 closed
í IDE interface 1 enabled	JP10	Pins 1 & 2 closed
IDE interface 1 disabled	JP10	Pins 2 & 3 closed
í IDE interface 2 enabled	JP11	Pins 1 & 2 closed
IDE interface 2 disabled	JP11	Pins 2 & 3 closed
í Battery type select internal	JP23	Pins 2 & 3 closed
CMOS memory clear	JP23	Pins 3 & 4 closed
Battery type select external	JP23	Closed
í VGA IRQ9 disabled	JP30	Open
VGA IRQ9 enabled	JP30	Closed

DRAM CONFIGURATION				
Size	Bank 0	Bank 1	Bank 2	Bank 3
2MB	(1) 256K x 36	(1) 256K x 36	None	None
4MB	(1) 256K x 36	(1) 256K x 36	(1) 256K x 36	(1) 256K x 36
4MB	(1) 512K x 36	(1) 512K x 36	None	None
4MB	(1) 1M x 36	None	None	None
6MB	(1) 256K x 36	(1) 256K x 36	(1) 512K x 36	(1) 512K x 36
8MB	(1) 512K x 36	(1) 512K x 36	(1) 512K x 36	(1) 512K x 36

Continued on next page...

EPSON, INC.  
ACTION PC 6000

... continued from previous page

DRAM CONFIGURATION (CON'T)				
Size	Bank 0	Bank 1	Bank 2	Bank 3
8MB	(1) 1M x 36	(1) 1M x 36	None	None
8MB	(1) 2M x 36	None	None	None
10MB	(1) 256K x 36	(1) 256K x 36	(1) 1M x 36	(1) 1M x 36
12MB	(1) 512K x 36	(1) 512K x 36	(1) 1M x 36	(1) 1M x 36
12MB	(1) 1M x 36	(1) 2M x 36	None	None
16MB	(1) 1M x 36	(1) 1M x 36	(1) 1M x 36	(1) 1M x 36
16MB	(1) 2M x 36	(1) 2M x 36	None	None
16MB	(1) 4M x 36	None	None	None
18MB	(1) 256K x 36	(1) 256K x 36	(1) 2M x 36	(1) 2M x 36
20MB	(1) 512K x 36	(1) 512K x 36	(1) 2M x 36	(1) 2M x 36
20MB	(1) 1M x 36	(1) 4M x 36	None	None
24MB	(1) 1M x 36	(1) 1M x 36	(1) 2M x 36	(1) 2M x 36
24MB	(1) 2M x 36	(1) 4M x 36	None	None
32MB	(1) 2M x 36	(1) 2M x 36	(1) 2M x 36	(1) 2M x 36
32MB	(1) 4M x 36	(1) 4M x 36	None	None
32MB	(1) 8M x 36	None	None	None
34MB	(1) 256K x 36	(1) 256K x 36	(1) 4M x 36	(1) 4M x 36
36MB	(1) 512K x 36	(1) 512K x 36	(1) 4M x 36	(1) 4M x 36
36MB	(1) 1M x 36	(1) 8M x 36	None	None
40MB	(1) 1M x 36	(1) 1M x 36	(1) 4M x 36	(1) 4M x 36
40MB	(1) 2M x 36	(1) 8M x 36	None	None
48MB	(1) 2M x 36	(1) 2M x 36	(1) 4M x 36	(1) 4M x 36
48MB	(1) 4M x 36	(1) 8M x 36	None	None
64MB	(1) 4M x 36	(1) 4M x 36	(1) 4M x 36	(1) 4M x 36
64MB	(1) 8M x 36	(1) 8M x 36	None	None
66MB	(1) 256K x 36	(1) 256K x 36	(1) 8M x 36	(1) 8M x 36
68MB	(1) 512K x 36	(1) 512K x 36	(1) 8M x 36	(1) 8M x 36
72MB	(1) 1M x 36	(1) 1M x 36	(1) 8M x 36	(1) 8M x 36
80MB	(1) 2M x 36	(1) 2M x 36	(1) 8M x 36	(1) 8M x 36
96MB	(1) 4M x 36	(1) 4M x 36	(1) 8M x 36	(1) 8M x 36
128MB	(1) 8M x 36	(1) 8M x 36	(1) 8M x 36	(1) 8M x 36

Note: The location of the banks is unidentified.

CACHE CONFIGURATION		
Size	Bank 0	TAG
256KB	(8) 32K x 8	Unidentified
1MB	(8) 128K x 8	Unidentified

CACHE JUMPER CONFIGURATION		
Size	JP34	JP35
256KB	Pins 1 & 2 closed	Open
1MB	Pins 2 & 3 closed	Pins 2 & 3 closed

Continued on next page...

EPSON, INC.  
ACTION PC 6000

... continued from previous page

VIDEO MEMORY CONFIGURATION		
Size	Bank 0	Bank 1
1MB	1MB	None
2MB	1MB	(2) 256K x 16
Note: Bank 0 is factory installed and is not configurable. The location is unidentified.		

DMA CHANNEL SELECTION		
Channel	JP17	JP18
1	Pins 1 & 2 closed	Pins 3 & 4 closed
3	Pins 3 & 4 closed	Pins 1 & 2 closed

ON BOARD VIDEO SELECTION			
Setting	JP31	JP32	JP33
Enabled	Closed	Closed	Closed
Disabled	Open	Open	Open