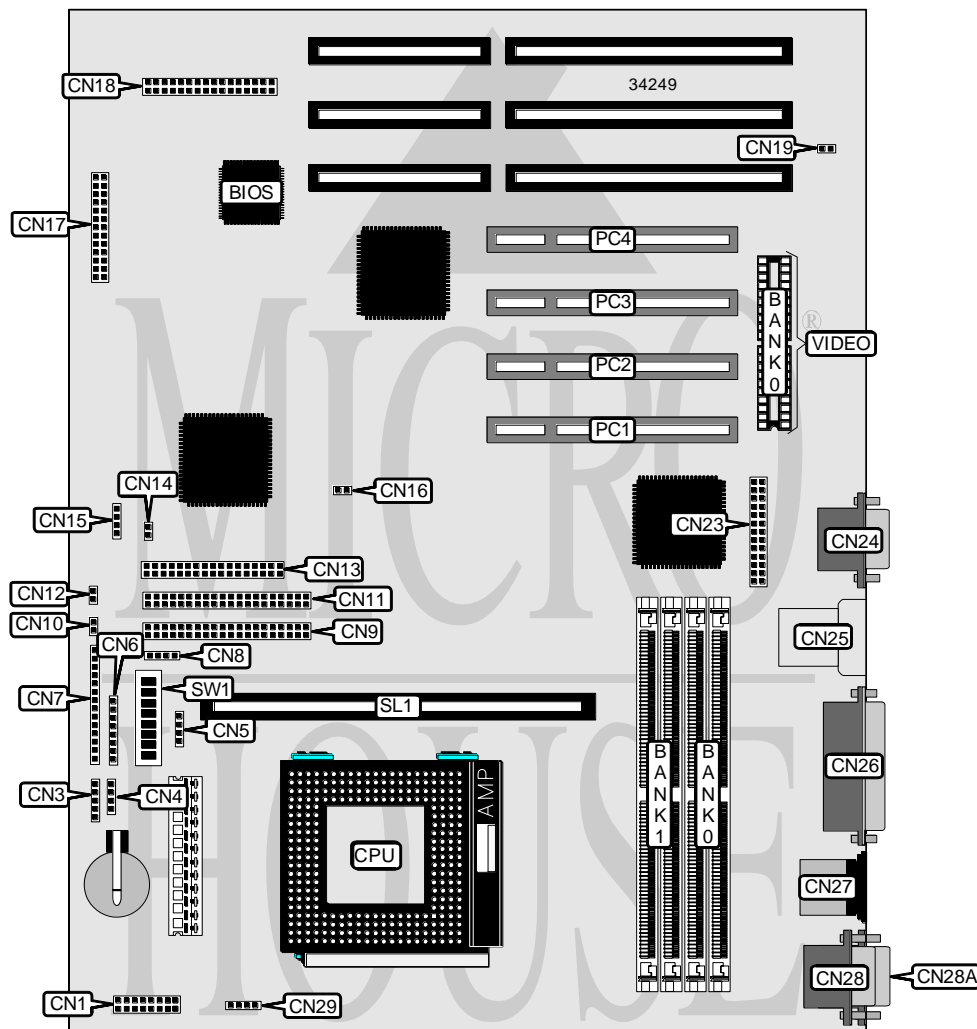


SIEMENS NIXDORF INFORMATIONSSYSTEME AG

SYSTEM BOARD D969

Processor	Pentium
Processor Speed	75/90/100/120/133/150/166/200MHz
Chip Set	Unidentified
Video Chip Set	Cirrus Logic
Maximum Onboard Memory	128MB (EDO supported)
Maximum Video Memory	2MB
Cache	128/256/512KB
BIOS	Phoenix
Dimensions	305mm x 244mm
I/O Options	32-bit PCI slots (4), CD-ROM audio in connector, floppy drive interface, IDE interfaces (2), parallel port, PS/2 mouse port, serial ports (2), VGA feature connector, VGA port, cache slot, IR connector, USB connector, chip card reader, voice modem connector, AUX-in connector, fax/modem remote on, wavetable connector, game/MIDI/audio connector, I2C connector
NPU Options	None



Continued on next page . . .

SIEMENS NIXDORF INFORMATIONSSYSTEME AG

SYSTEM BOARD D969

... continued from previous page

CONNECTIONS			
Purpose	Location	Purpose	Location
Chip card reader	CN1	Power on switch	CN16
IR connector	CN3	Wavetable connector	CN17
Speaker	CN4	Game/MIDI/audio connector	CN18
Soft off power supply	CN5	I ² C connector	CN19
Front panel connector	CN6	VGA feature connector	CN23
Front panel connector	CN7	VGA port	CN24
SCSI interface LED	CN8	USB connector	CN25
IDE interface 2	CN9	Parallel port	CN26
Voice modem connector	CN10	PS/2 mouse port	CN27
IDE interface 1	CN11	Serial port	CN28
AUX in connector	CN12	Serial port	CN28A
Floppy drive interface	CN13	Chassis fan power	CN29
Fax/modem remote on connector	CN14	32-bit PCI slots	PC1 – PC4
CD-ROM audio in connector	CN15	Cache slot	SL1

USER CONFIGURABLE SETTINGS		
Function	Label	Position
í Flash BIOS normal operation	SW1/5	Off
Flash BIOS recovery mode	SW1/5	On
í Factory configured - do not alter	SW1/6	Off
í Flash BIOS write protect disabled	SW1/7	Off
Flash BIOS write protect enabled	SW1/7	On
í Floppy drive write protect disabled	SW1/8	Off
Floppy drive write protect enabled	SW1/8	On

DRAM CONFIGURATION		
Size	Bank 0	Bank 1
8MB	(2) 1M x 36	None
16MB	(2) 2M x 36	None
16MB	(2) 1M x 36	(2) 1M x 36
24MB	(2) 2M x 36	(2) 1M x 36
32MB	(2) 4M x 36	None
32MB	(2) 2M x 36	(2) 2M x 36
40MB	(2) 4M x 36	(2) 1M x 36
48MB	(2) 4M x 36	(2) 2M x 36
64MB	(2) 8M x 36	None
64MB	(2) 4M x 36	(2) 4M x 36
72MB	(2) 8M x 36	(2) 1M x 36
80MB	(2) 8M x 36	(2) 2M x 36
96MB	(2) 8M x 36	(2) 4M x 36
128MB	(2) 8M x 36	(2) 8M x 36

Note: Board accepts EDO memory.

Continued on next page...

SIEMENS NIXDORF INFORMATIONSSYSTEME AG
SYSTEM BOARD D969

... continued from previous page

CACHE CONFIGURATION	
Size	SL1
128KB	128KB module installed
256KB	256KB module installed
512KB	512KB module installed

VIDEO MEMORY CONFIGURATION		
Size	Bank 0	Bank 1
1MB	1MB	None
2MB	1MB	(2) 256K x 16

Note: Bank 0 is factory installed and is not configurable.

CPU SPEED SELECTION						
CPU speed	Clock speed	Multiplier	SW1/1	SW1/2	SW1/3	SW1/4
75MHz	50MHz	1.5x	On	On	Off	Off
90MHz	60MHz	1.5x	On	Off	Off	Off
100MHz	66MHz	1.5x	Off	On	Off	Off
120MHz	60MHz	2x	On	Off	On	Off
133MHz	66MHz	2x	Off	On	On	Off
150MHz	60MHz	2.5x	On	Off	On	On
166MHz	66MHz	2.5x	Off	On	On	On
200MHz	66MHz	3x	Off	On	Off	On