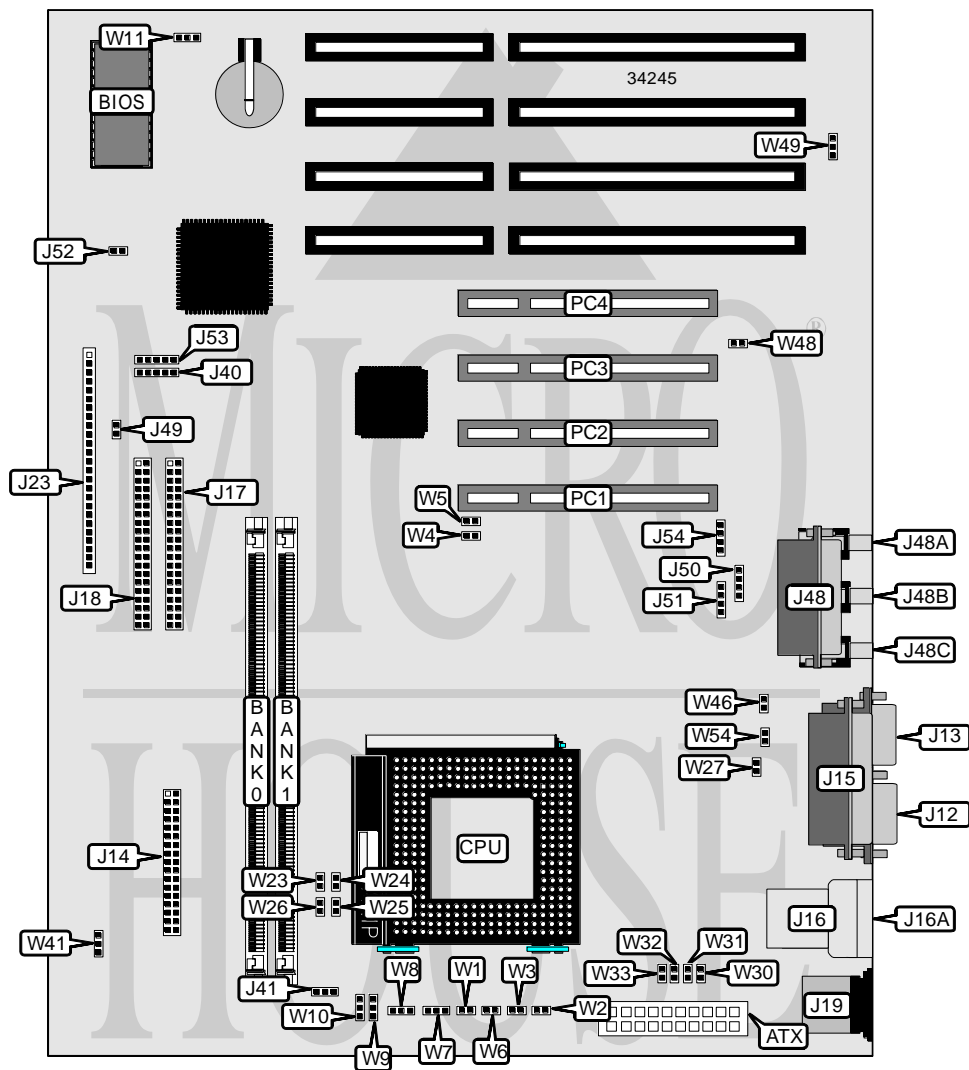


MICRONICS COMPUTERS, INC.

THUNDERBOLT

Processor	AM K5/Pentium
Processor Speed	90/100/120/133/150/166/180/200/233MHz
Chip Set	Intel
Video Chip Set	None
Maximum Onboard Memory	256MB (EDO supported)
Maximum Video Memory	None
Cache	256/512KB
BIOS	Phoenix
Dimensions	305mm x 244mm
I/O Options	32-bit PCI slots (4), CD-ROM audio in connectors (3), floppy drive interface, MIDI/game port, IDE interfaces (2), parallel port, PS/2 mouse port, serial ports (2), IR connector, USB connectors (2), ATX power connector, microphone in connector, line in connector, line out connector, modem connector
NPU Options	None



Continued on next page. . .

MICRONICS COMPUTERS, INC.
THUNDERBOLT

... continued from previous page

CONNECTIONS			
Purpose	Location	Purpose	Location
ATX power connector	ATX	Reset switch	J23/pins 22 & 23
Serial port 1	J12	Speaker	J23/pins 24 - 26
Serial port 2	J13	Keylock	J40
Floppy drive interface	J14	Chassis fan power	J41
Parallel port	J15	Panasonic CD-ROM connector	J45
USB connector 1	J16	Mitsumi CD-ROM connector	J46
USB connector 2	J16A	Modem connector	J47
IDE interface 1	J17	SCSI interface LED	J49
IDE interface 2	J18	CD-ROM audio in connector	J50
PS/2 mouse port	J19	Modem audio connector	J51
Chassis fan power	J20	MIDI/game port	JP48
Soft off power supply	J23/pins 1 & 2	Microphone in connector	JP48A
IR connector	J23/pins 6 - 10	Line in connector	JP48B
IDE interface LED	J23/pins 13 - 16	Line out connector	JP48C
Power LED	J23/pins 18 - 20	32-bit PCI slots	PC1 – PC4

Note: The location of J20, J45, J46, J47 are unidentified.

USER CONFIGURABLE SETTINGS		
Function	Label	Position
í Factory configured - do not alter	J52	Unidentified
í Factory configured - do not alter	J53	Unidentified
í Factory configured - do not alter	J54	Unidentified
í Factory configured - do not alter	W1	Unidentified
í Factory configured - do not alter	W7	Unidentified
í Factory configured - do not alter	W8	Unidentified
í Factory configured - do not alter	W9	Unidentified
í Factory configured - do not alter	W10	Unidentified
í CMOS memory normal operation	W11	Pins 1 & 2 closed
CMOS memory clear	W11	Pins 2 & 3 closed
í Flash BIOS write protect disabled	W12	Open
Flash BIOS write protect enabled	W12	Closed
í Factory configured - do not alter	W41	Unidentified
í Wavetable enabled	W48	Closed
Wave table disabled	W48	Open
í On board sound enabled	W49	Pins 1 & 2 closed
On board sound disabled	W49	Pins 2 & 3 closed
í Factory configured - do not alter	W54	Unidentified

Note: The location of W12 is unidentified.

Continued on next page...

MICRONICS COMPUTERS, INC.
THUNDERBOLT

... continued from previous page

DIMM CONFIGURATION		
Size	Bank 0	Bank 1
8MB	(1) 1M x 64	None
16MB	(1) 2M x 64	None
16MB	(1) 1M x 64	(1) 1M x 64
24MB	(1) 2M x 64	(1) 1M x 64
32MB	(1) 4M x 64	None
32MB	(1) 2M x 64	(1) 2M x 64
40MB	(1) 4M x 64	(1) 1M x 64
48MB	(1) 4M x 64	(1) 2M x 64
64MB	(1) 8M x 64	None
64MB	(1) 4M x 64	(1) 4M x 64
72MB	(1) 8M x 64	(1) 1M x 64
80MB	(1) 8M x 64	(1) 2M x 64
96MB	(1) 8M x 64	(1) 4M x 64
128MB	(1) 8M x 64	(1) 8M x 64
128MB	(1) 16M x 64	None
136MB	(1) 16M x 64	(1) 1M x 64
144MB	(1) 16M x 64	(1) 2M x 64
160MB	(1) 16M x 64	(1) 4M x 64
192MB	(1) 16M x 64	(1) 8M x 64
256MB	(1) 16M x 64	(1) 16M x 64

Note: Board accepts EDO memory.

CACHE CONFIGURATION	
Size	Bank 0
256KB	(2) 32K x 32
512KB	(2) 64K x 32

Note: The location of bank 0 is unidentified.

CACHE JUMPER CONFIGURATION	
Size	W46
256KB	Closed
512KB	Open

Continued on next page. . .

MICRONICS COMPUTERS, INC.
THUNDERBOLT

... continued from previous page

CPU SPEED SELECTION (AMD)							
CPU speed	Clock speed	Multiplier	W2	W3	W4	W5	W6
90MHz	60MHz	1.5x	Open	Open	Closed	Open	Closed
100MHz	66MHz	1.5x	Open	Open	Open	Closed	Open
120MHz	60MHz	2x	Closed	Open	Closed	Open	Closed
133MHz	66MHz	2x	Closed	Open	Open	Closed	Open
150MHz	60MHz	2.5x	Closed	Closed	Closed	Open	Closed
166MHz	66MHz	2.5x	Closed	Closed	Open	Closed	Open
180MHz	60MHz	3x	Open	Closed	Closed	Open	Closed
200MHz	66MHz	3x	Open	Closed	Open	Closed	Open
233MHz	66MHz	3.5x	Open	Open	Open	Closed	Open

CPU SPEED SELECTION (INTEL)							
CPU speed	Clock speed	Multiplier	W2	W3	W4	W5	W6
90MHz	60MHz	1.5x	Open	Open	Closed	Open	Closed
100MHz	66MHz	1.5x	Open	Open	Open	Closed	Open
120MHz	60MHz	2x	Closed	Open	Closed	Open	Closed
133MHz	66MHz	2x	Closed	Open	Open	Closed	Open
150MHz	60MHz	2.5x	Closed	Closed	Closed	Open	Closed
166MHz	66MHz	2.5x	Closed	Closed	Open	Closed	Open
180MHz	60MHz	3x	Open	Closed	Closed	Open	Closed
200MHz	66MHz	3x	Open	Closed	Open	Closed	Open
233MHz	66MHz	3.5x	Open	Open	Open	Closed	Open

CPU TYPE SELECTION				
Type	W23	W24	W25	W26
AM K5	Closed	Closed	Closed	Closed
P54C	Closed	Closed	Closed	Closed
P55C	Open	Open	Open	Open
MMX	Open	Open	Open	Open

CPU TYPE SELECTION (CON'T)				
Type	W30	W31	W32	W33
AM K5	Open	Open	Open	Open
P54C	Open	Open	Open	Open
P55C	Closed	Closed	Closed	Closed

CPU VOLTAGE SELECTION	
Voltage	W27
3.3v	Closed
í 3.5v	Open